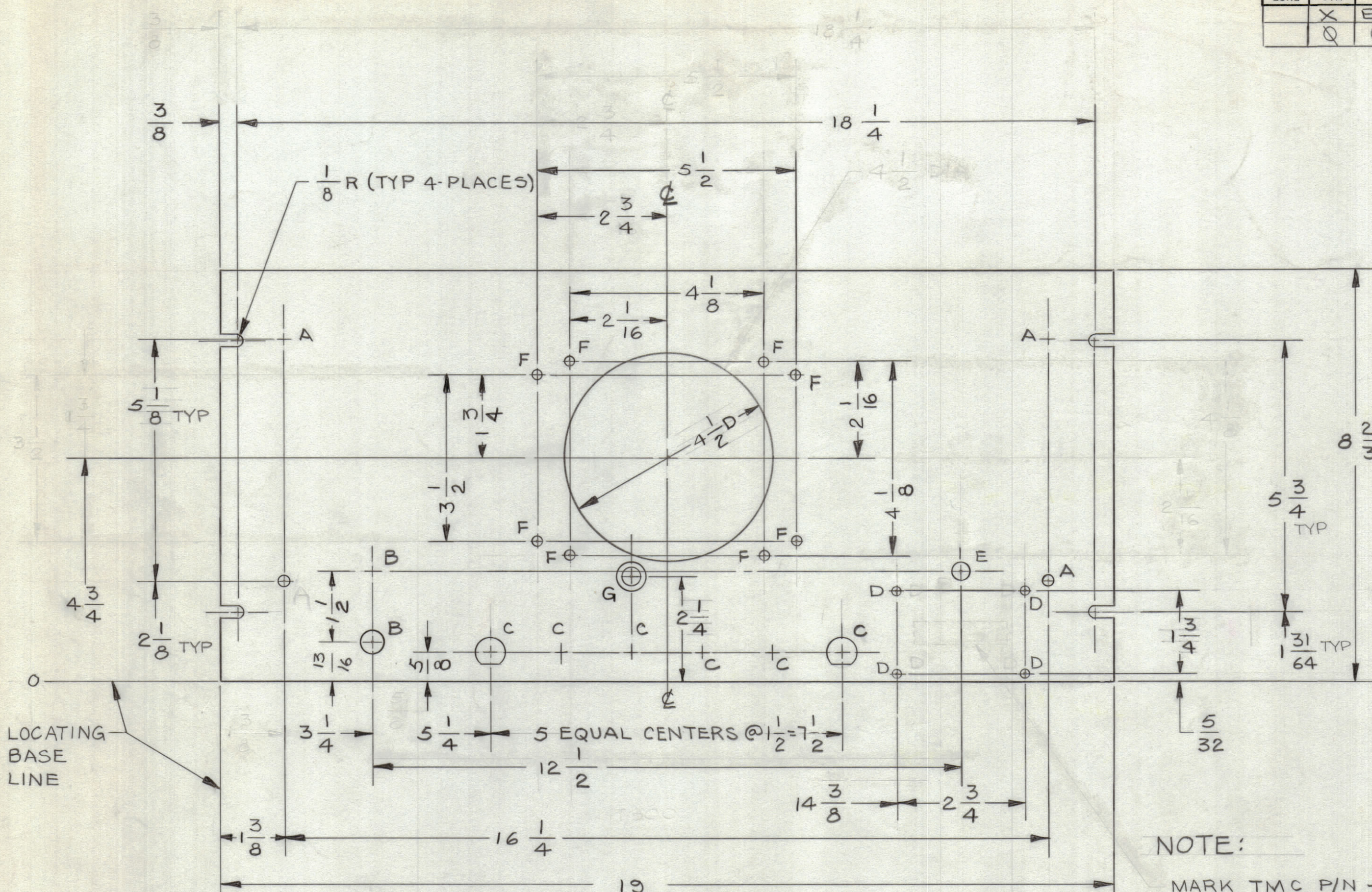
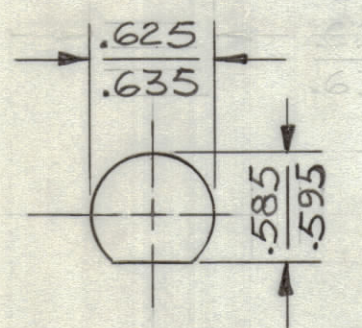


REVISIONS							
ZONE	SYM	DESCRIPTION	DATE	E.M.N. NO.	DRAFT	CHKD	APPD
	X	EXPERIMENTAL RELEASE	8/29/66	X	CD	JHE	
	Q	ORIGINAL RELEASE FOR PRODUCTION	9-1-66	Q	RME		

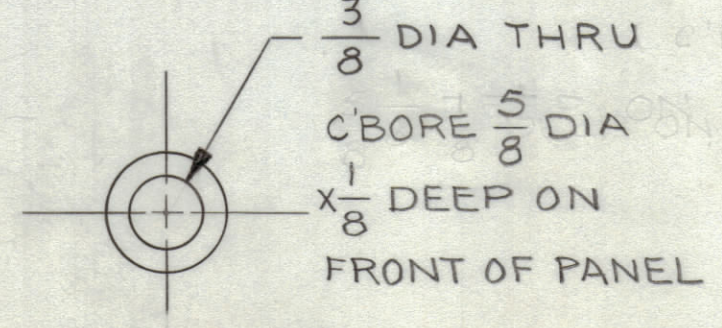


NOTE:
 MARK TMC P/N 1/8
 HIGH GOTHIC ON
 REAR OF PANEL
 W/LATEST REV
 LETTER

FRONT VIEW SHOWN



DETAIL "C"



DETAIL "G"

HOLE LEGEND		
SYM	DESCRIPTION	REQ'D
A	13/64 DIA	4
B	15/32 DIA	2
C	SEE DETAIL	6
D	№ 48 (.076) DR.	4
E	13/32 DIA	1
F	11/64 DIA	8
G	SEE DETAIL	1

MACHINING:

- MILL ALL EDGES.
- Holes MUST BE DRILLED, UNLESS OTHERWISE SPECIFIED.
- LATERAL BOW OF PANEL MUST BE KEPT TO .031 TOLERANCE.
- PANEL MUST BE FREE OF ALL MACHINING MARKS, GOUGES AND SCRATCHES. IF NECESSARY, SAND FRONT OF PANEL WITH NO. 120 GRIT SANDPAPER.

FINISH NOTES:

- S404 - IRIDITE 14-2 AL-COAT.
- S114 - ZINC CHROMATE PRIMER } FRONT AND
- S115 - SMOOTH GRAY ENAMEL } EDGES ONLY

OR
 PRIME AND PAINT PER CUSTOMER'S SPECIFICATIONS.

NOTES

1	KIT300	
QTY./UNIT	MODEL USED ON	ASS'Y. NO.
SCALE 1:2	CODE	
THE CONTENTS OF THIS DRAWING ARE THE EXCLUSIVE PROPERTY OF THE TECHNICAL MATERIEL CORP. ITS UNAUTHORIZED USE OR REPRODUCTION IN WHOLE OR IN PART IS STRICTLY FORBIDDEN.		

LD1596

REQ'D	ITEM	PART NUMBER	DESCRIPTION	SYMBOL
	R. HAY		LIST OF MATERIAL	
MATERIAL		3/16 ALUMINUM 2024-T3	THE TECHNICAL MATERIEL CORP. MAMARONECK, NEW YORK	
FINISH		SEE NOTES	TITLE PANEL, FRONT	
UNLESS OTHERWISE SPECIFIED DIMENSIONS ARE IN INCHES AND INCLUDE CHEMICALLY APPLIED OR PLATED FINISHES		DRAWN C.E.D.	DATE 8-18-66	FINAL APPROVAL [Signature]
DECIMALS .XX ± .01 .XXX ± .005		CHECKED [Signature]	DATE 8/31/66	DATE 8/31/66
FRACTIONS ± 1/64 ANGLES ± 0° 30'		ELECT. DES.	DATE	DATE
TOLERANCES		MECH. DES.	DATE	DATE
		MS5048		REV. LTR.

MS5048