

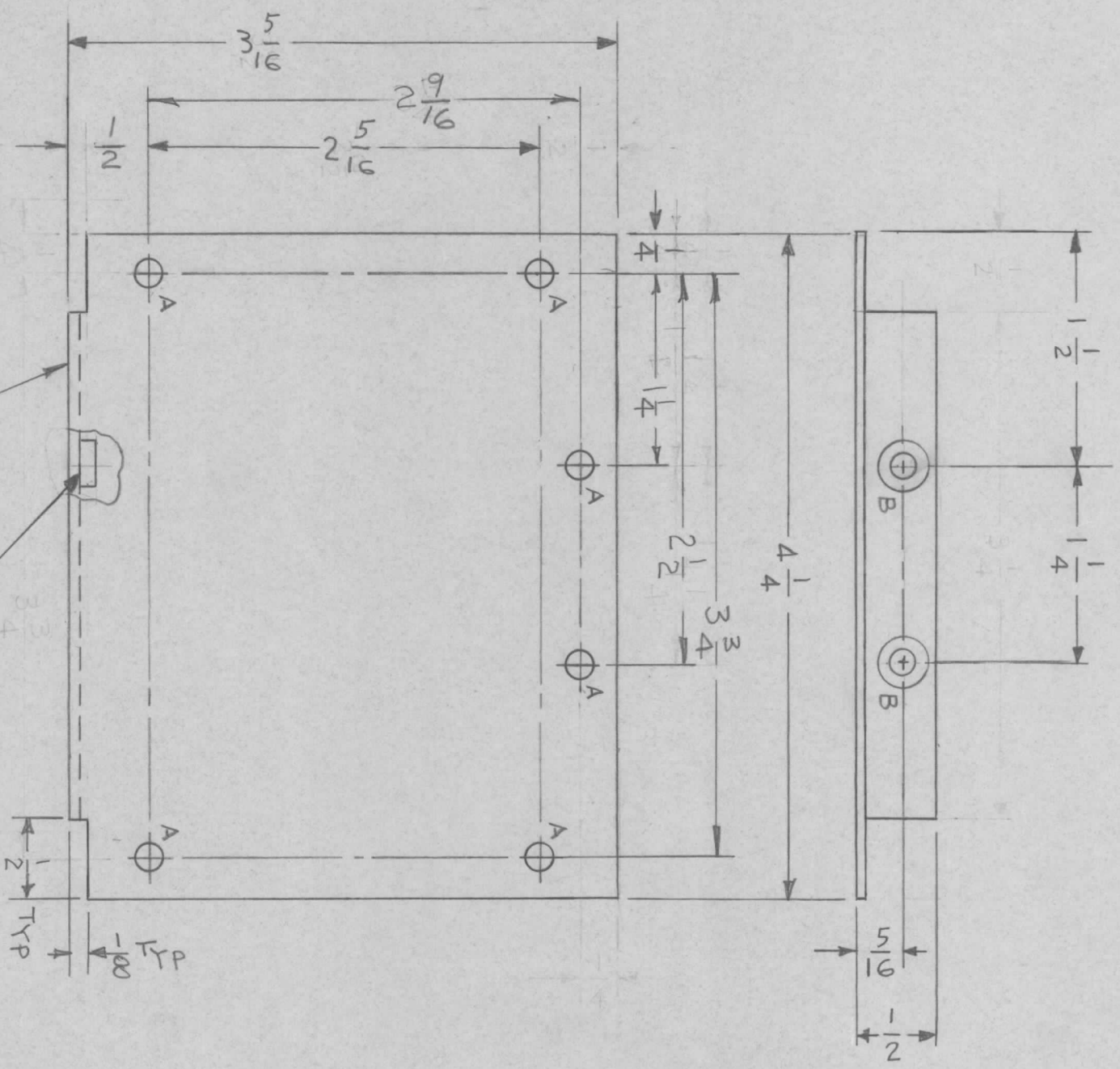
- 1. USE MATERIAL THICKNESS FOR MAXIMUM RADIUS ON ALL BENDS
- 2. ALL ANGULAR BENDS 90 DEGREES
- 3. REMOVE ALL BURRS AND SHARP EDGES
- 4. MOUNT INSERTS AFTER FINISHING

NOTES

UNLESS OTHERWISE SPECIFIED:

MARK TMC P/N 1/8 HIGH GOTHIC LETTERS W/LATEST REV. LETTER

1 MOUNT IN ALL "B" HOLES



MS 5045

SYM	DESCRIPTION	DATE	E.M.N. NO.	DRAFT	CHKD	APPD
X	EXP. RELEASE	8/19/66	X	JBC	JBC	
X1	COMPLETELY REVISED	8-22-66	X1	JBC	JBC	
Ø	ORIGINAL RELEASE FOR PRODUCTION	11-22-66	Ø	RME		

REVISIONS

HOLE	DESCRIPTION	REQ.
A	11/64 DIA	6
B	.191-.194 DIA	2

QTY./UNIT	SCALE	MODEL USED ON	CODE	ASSY. NO.
2	1:1	TSWCA-3X		BMA149

THE CONTENTS OF THIS DRAWING ARE THE EXCLUSIVE PROPERTY OF THE TECHNICAL MATERIEL CORP. ITS UNAUTHORIZED USE OR REPRODUCTION IN WHOLE OR IN PART IS STRICTLY FORBIDDEN.

REQ'D.	ITEM	PART NUMBER	DESCRIPTION	SYMBOL
2	1	NT-129-632-4	NUT, PLAIN, SPLINE	B

LIST OF MATERIAL

MATERIAL	FINISH	TITLE
.064 THK. ALUMINUM 5052-H32	S 404 YEL. IRIDITE	THE TECHNICAL MATERIEL CORP. MAMARONECK, NEW YORK PLATE, SIDE

UNLESS OTHERWISE SPECIFIED DIMENSIONS ARE IN INCHES AND INCLUDE CHEMICALLY APPLIED OR PLATED FINISHES	TOLERANCES	FRACTIONS
DECIMALS		
.X ± .05		± 1/64
.XX ± .01		ANGLES
.XXX ± .005		± 0° 30'

DRAWN	CHECKED	ELECT. DES.	MECH. DES.	DATE	DATE	DATE	DATE
JBC	JBC	JBC	JBC	8-19-66	11-19-66	11-22-66	11/21/66

WLC [Signature] 11/21/66