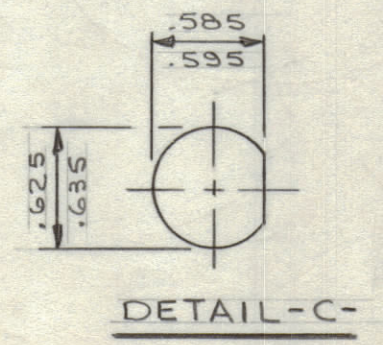
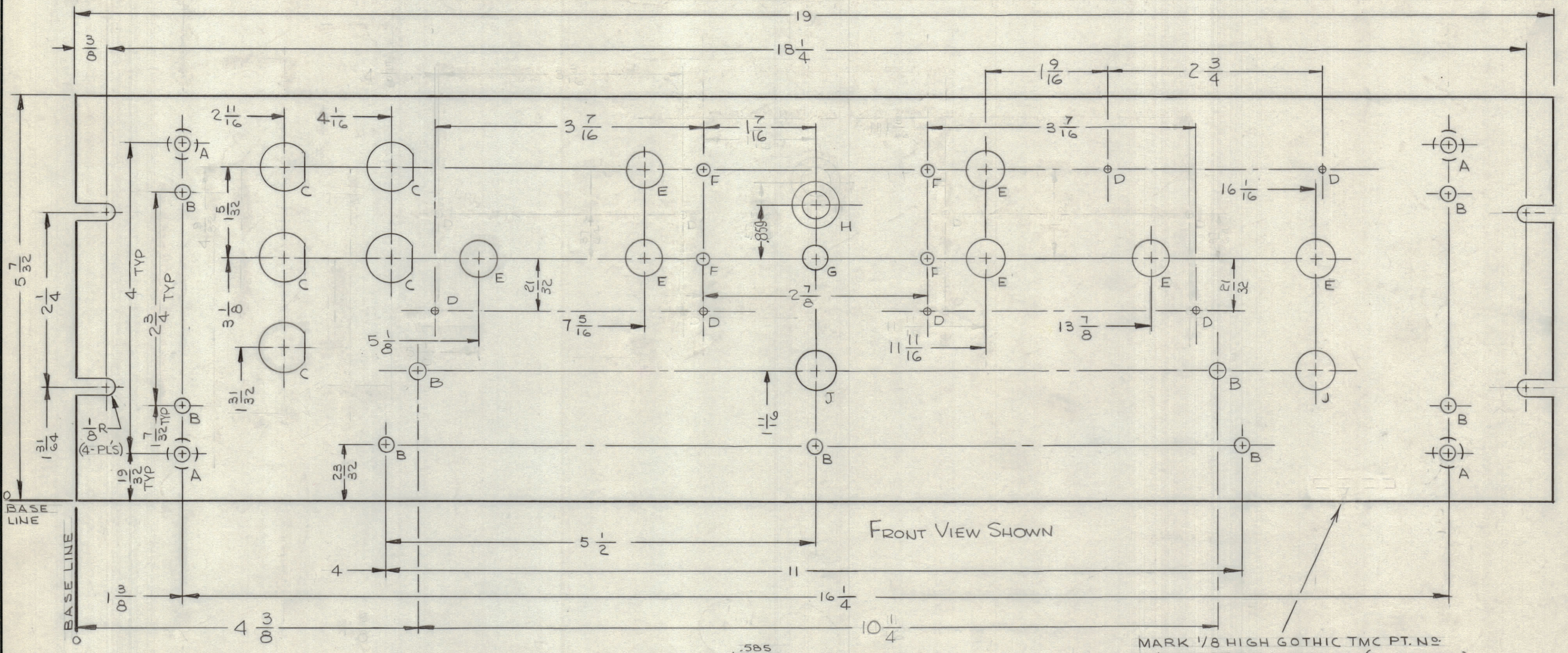


REVISIONS							
ZONE	SYM	DESCRIPTION	DATE	E.M.N. NO.	DRAFT	CHKD	APPD
	XI	4" DIA HOLE - BELOC 2" DIA ADDED CNTR "J" HOLE WAS "E" HOLE. 2" DIA HOLE ADD ON "H" HOLE .059 WAS 55/64 DIA.	9/13/66		WFO		P/S
	Ø	ORIGINAL RELEASE FOR PRODUCTION	10/6/66	Ø	CV		



HOLE LEGEND		
HOLE	DESCRIPTION	REQ'D
A	.196 DIA & C'SINK 82° X .390 DIA (FAR SIDE)	4
B	13/64 DIA	9
C	SEE DETAIL	5
D	Nº 48 (.0760) DR	6
E	15/32 DIA	7
F	11/64 DIA	4
G	5/16 DIA	1
H	11/32 DIA & C'SINK 82° X 19/32 DIA	1
J	1/2 DIA	2

**MACHINING:**

- MILL ALL EDGES.
- HOLES MUST BE DRILLED, UNLESS OTHERWISE SPECIFIED.
- LATERAL BOW OF PANEL MUST BE KEPT TO .031 TOLERANCE.
- PANEL MUST BE FREE OF ALL MACHINING MARKS, GOUGES AND SCRATCHES. IF NECESSARY, SAND FRONT OF PANEL WITH NO. 120 GRIT SANDPAPER.

**FINISH NOTES:**

- S404 - IRIDITE 14-2 AL-COAT.
- S114 - ZINC CHROMATE PRIMER FRONT AND
- S115 - SMOOTH GRAY ENAMEL EDGES ONLY

**NOTES**

1	LSCA-1A	
Q'TY./UNIT	MODEL USED ON	ASS'Y. NO.
SCALE	CODE	SK-3233-2

THE CONTENTS OF THIS DRAWING ARE THE EXCLUSIVE PROPERTY OF THE TECHNICAL MATERIEL CORP. ITS UNAUTHORIZED USE OR REPRODUCTION IN WHOLE OR IN PART IS STRICTLY FORBIDDEN.

REF: LD 2115

REQ'D.	ITEM	PART NUMBER	DESCRIPTION	SYMBOL
EATON LIST OF MATERIAL				
MATERIAL			THE TECHNICAL MATERIEL CORP. MAMARONECK, NEW YORK	
3/16 THK ALUMINUM 2024-T3			TITLE PANEL, FRONT	
FINISH			DRAWN J. LESHINSKI	
- SEE NOTES -			DATE 7/29/66	
UNLESS OTHERWISE SPECIFIED DIMENSIONS ARE IN INCHES AND INCLUDE CHEMICALLY APPLIED OR PLATED FINISHES			FINAL APPROVAL [Signature]	
DECIMALS X ± .05 .XX ± .01 .XXX ± .005			DATE 10/5/66	
FRACTIONS ± 1/64 ANGLES ± 0° 30'			DATE MS5022	
TOLERANCES			MECH. DES. [Signature]	
			DATE 10-6-66	
			SHEET	
			REV. LTR.	

MS 5022