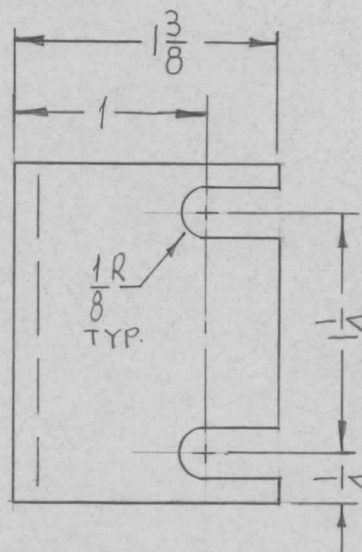
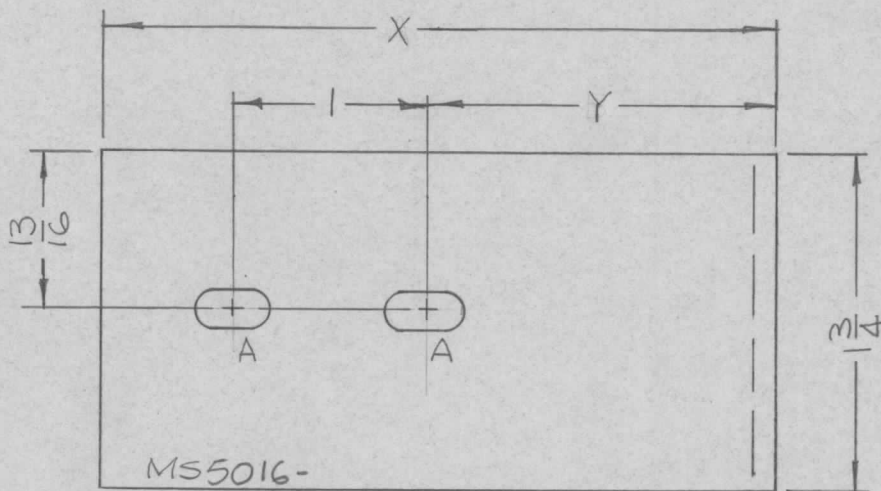


TMC P/N	X	Y
M55016-1	3-1/2	1-13/16
M55016-2	2-1/2	13/16

REQ. PER UNIT IEA	USED ON		M55016	Q
	MODEL RAK110-2	ASS'Y. NO. BMA156		



SLOTS:
A-3/16 X 3/8 (2REQ.)

MARK TMC P/N ^{1/8}
1/8 HIGH GOTHIC
W/LATEST REV.
LETTER.

UNLESS OTHERWISE SPECIFIED:

1. USE MATERIAL THICKNESS FOR MAXIMUM RADIUS ON ALL BENDS
2. ALL ANGULAR BENDS 90 DEGREES
3. REMOVE ALL BURRS AND SHARP EDGES

Q	ORIGINAL RELEASE FOR PRODUCTION	12.1.66	44	WFO			REQ. ITEM	PART NO.	F. BUDETTI	DESCRIPTION	SYMBOL
X ₁	1-3/8 ADDED	9-15-66	X ₁	MSA	JCP	MM	1/8 THICK			THE TECHNICAL MATERIEL CORP. MAMARONECK, NEW YORK	
X	EXP. RELEASE	6-29-66	X	MSA	JCP	MM	STOCK SIZE			BRACKET, SWITCH	
							ALUMINUM				
SYM	DESCRIPTION	DATE	CH. NO.	DRAFTS	CHECKER	ENG. APP.	MATERIAL				
	UNLESS OTHERWISE SPECIFIED DIMENSIONS ARE IN INCHES AND INCLUDE CHEMICALLY APPLIED OR PLATED FINISHES	SCALE	1:1				5052-H32		MSA	JCP	JCB
	DECIMALS .X ± .05 .XX ± .01 .XXX ± .005	FRACTIONS ± 1/64 ANGLES ± 0° 30'	CODE A				TYPE & TEMPER	HEAT TREAT. SPEC.	DRAWN	CHECKED	FINAL APPROVAL
	TOLERANCES						5404 YEL IRIDITE		MSA 1 DEC 66	JCP	MS5016
							FINISH & SPEC. NO.	ELEC. DES. APP.	MECH. DES. APP.		Q