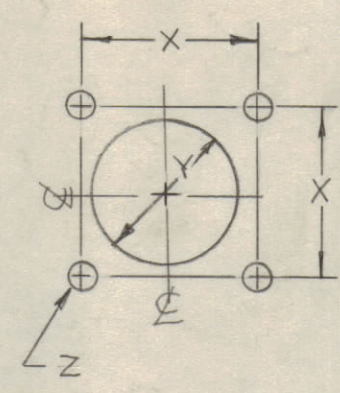
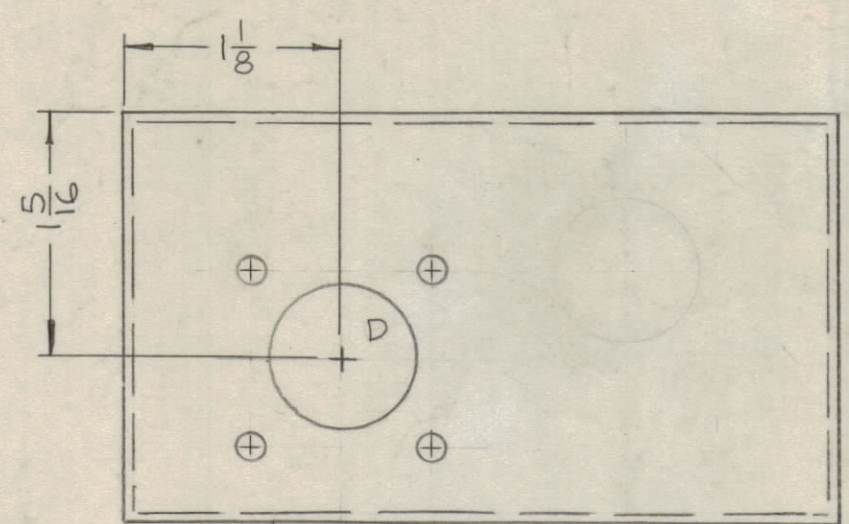


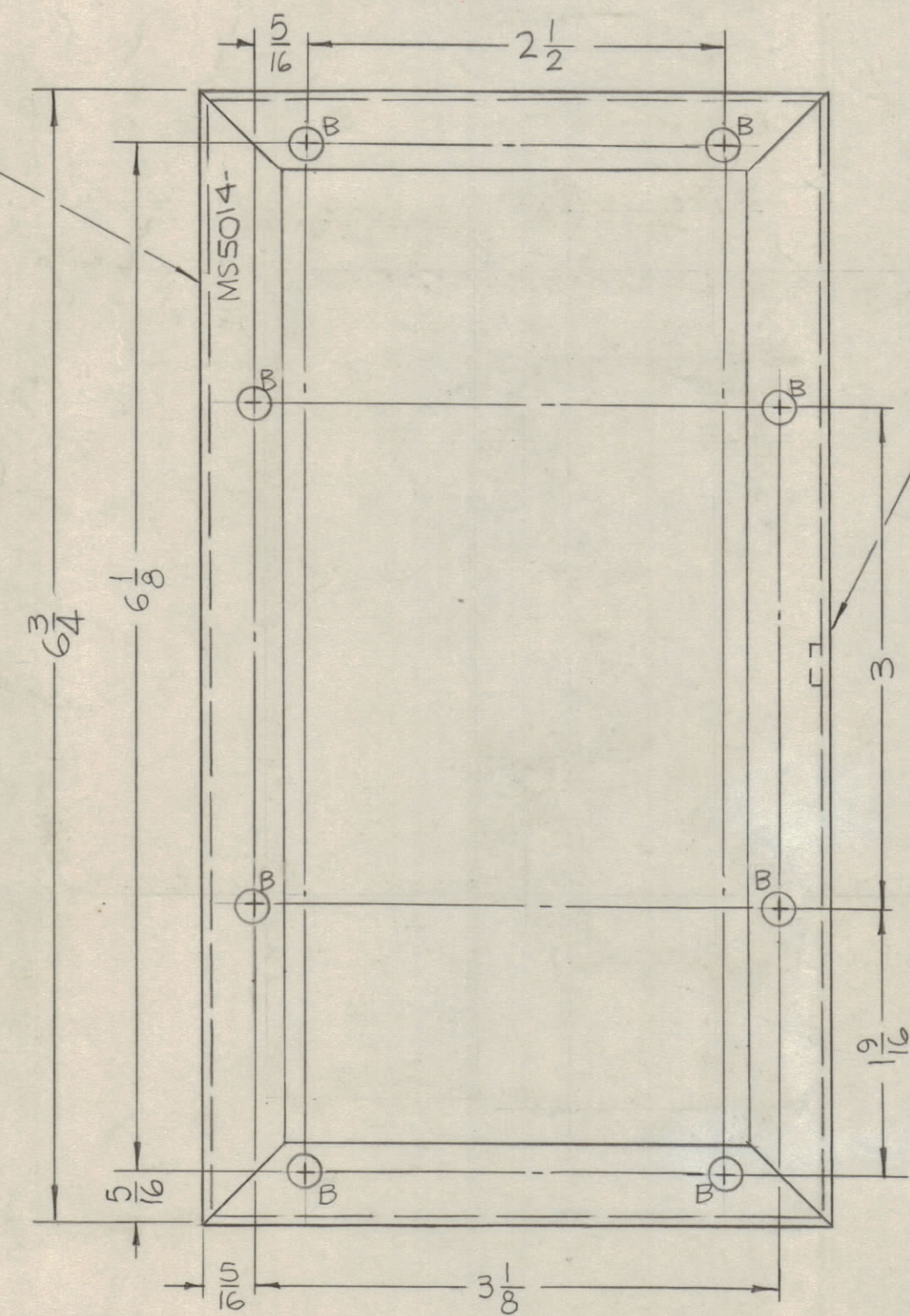
REVISIONS							
ZONE	SYM	DESCRIPTION	DATE	E.M.N. NO.	DRAFT	CHKD	APPD
	X	EXPERIMENTAL RELEASE	7-26-46	X	MS		AE
	X1	FINISH WAS S404 YEL. IRIDITE	9-15-46	X1	MS	RFB	RFB
E4	X2	11/16 WAS 13/16	9-27-46	X2	MS	RFB	RFB
	Ø	ORIGINAL RELEASE FOR PRODUCTION	12-13-46		MS		
	A	FINISH WAS S245 SILVER PLATE S423 SILVER KOTE	5.7.68	18911	MS		FB



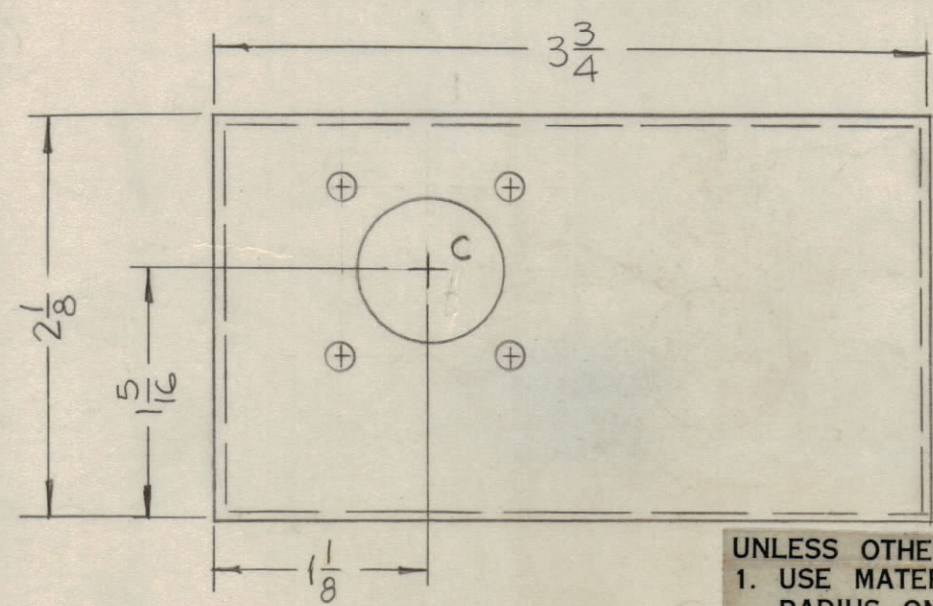
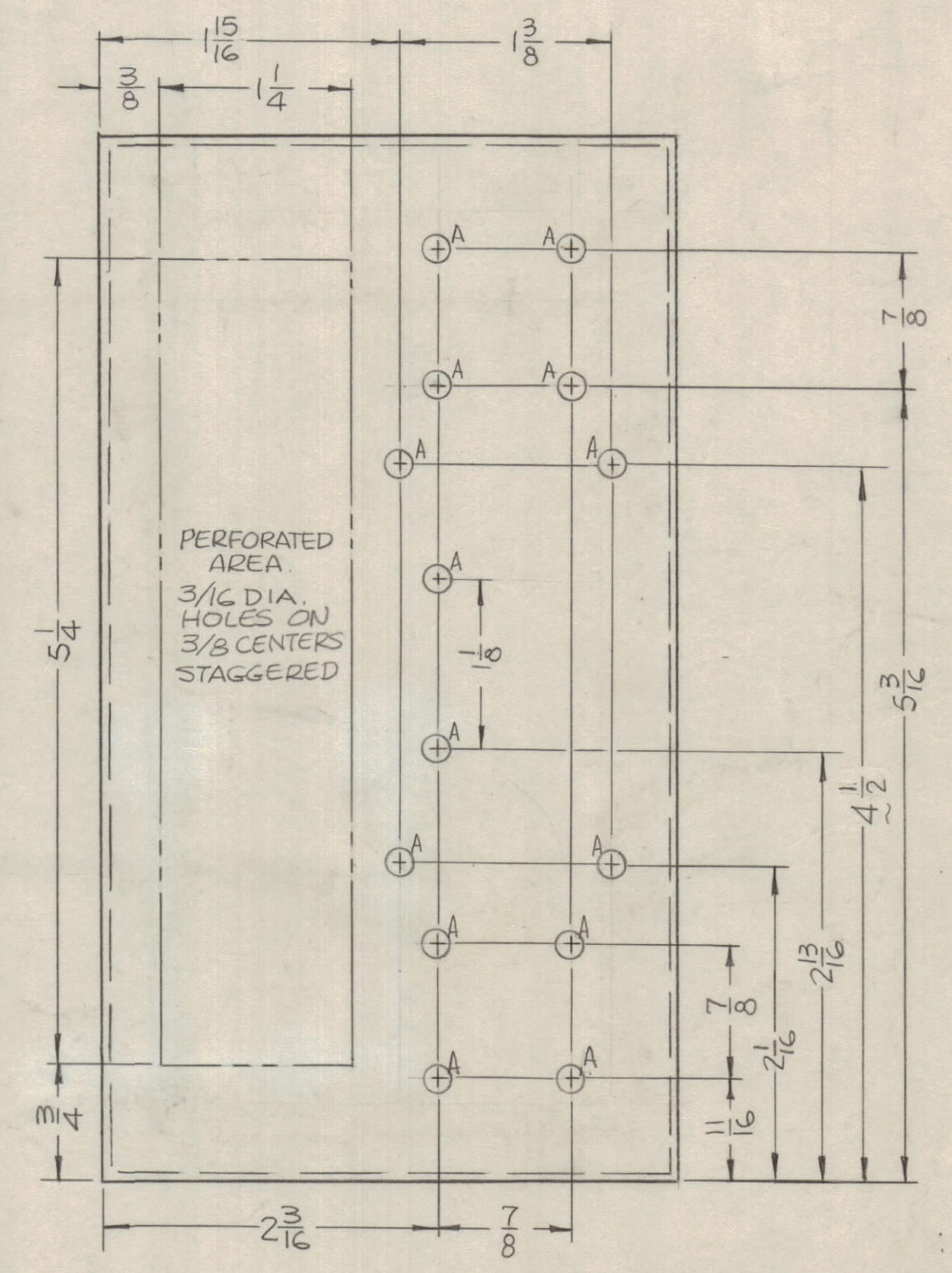
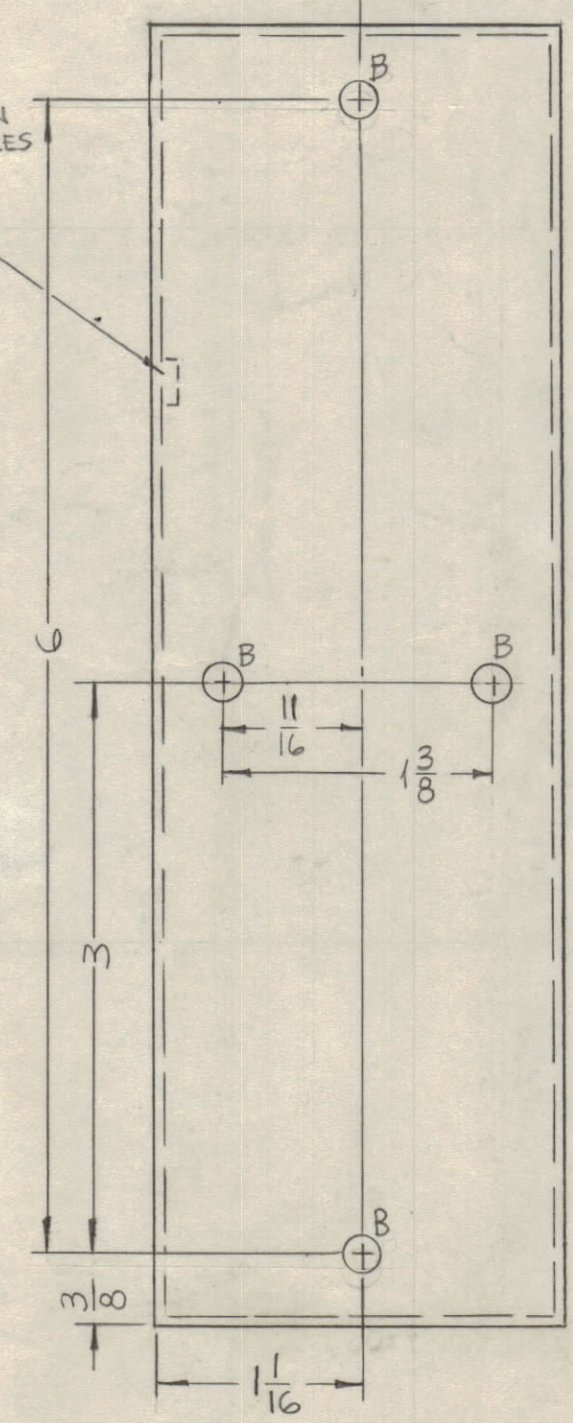
DETAIL	X	Y <sub>DIA.</sub>	Z <sub>DIA.</sub>
C	29/32	3/4	9/64
D	15/16	3/4	13/64

DETAIL - C & D

MARK TMC P/N  
1/8" HIGH GOTHIC  
W/LATEST REV.  
LETTER.



MOUNT IN ALL "B" HOLES



HOLES	DESCRIPTION	REQ.
A	11/64 DIA.	14
B	.191-.194 DIA.	12
C	SEE DETAIL	1
D	SEE DETAIL	1

UNLESS OTHERWISE SPECIFIED:  
1. USE MATERIAL THICKNESS FOR MAXIMUM RADIUS ON ALL BENDS  
2. ALL ANGULAR BENDS 90 DEGREES  
3. REMOVE ALL BURRS AND SHARP EDGES  
4. MOUNT INSERTS AFTER FINISHING

NOTES

Q'TY./UNIT	AF 107	A5583
SCALE	1:1	A
THE CONTENTS OF THIS DRAWING ARE THE EXCLUSIVE PROPERTY OF THE TECHNICAL MATERIEL CORP. ITS UNAUTHORIZED USE OR REPRODUCTION IN WHOLE OR IN PART IS STRICTLY FORBIDDEN.		

REF: LD1508-

REQ'D.	1	NT129-632-4	NUT, PLAIN, SPLINE	B
ITEM		PART NUMBER	DESCRIPTION	SYMBOL
F. BUDETTI LIST OF MATERIAL				
MATERIAL .063 THICK ALUMINUM 5052-H32			THE TECHNICAL MATERIEL CORP. MAMARONECK, NEW YORK	
FINISH S404 YEL IRIDITE			TITLE CHASSIS, FILTER	
DRAWN	DATE	FINAL APPROVAL	DATE	
CHECKED	DATE			
ELECT. DES.	DATE	MS5014	A	
MECH. DES.	DATE			
DECIMALS	FRACTIONS	TOLERANCES	SHEET	REV. LTR.
.X ± .05	± 1/64	± .005		
.XX ± .01	ANGLES	± 0° 30'		
.XXX ± .005				

MSS014  
A