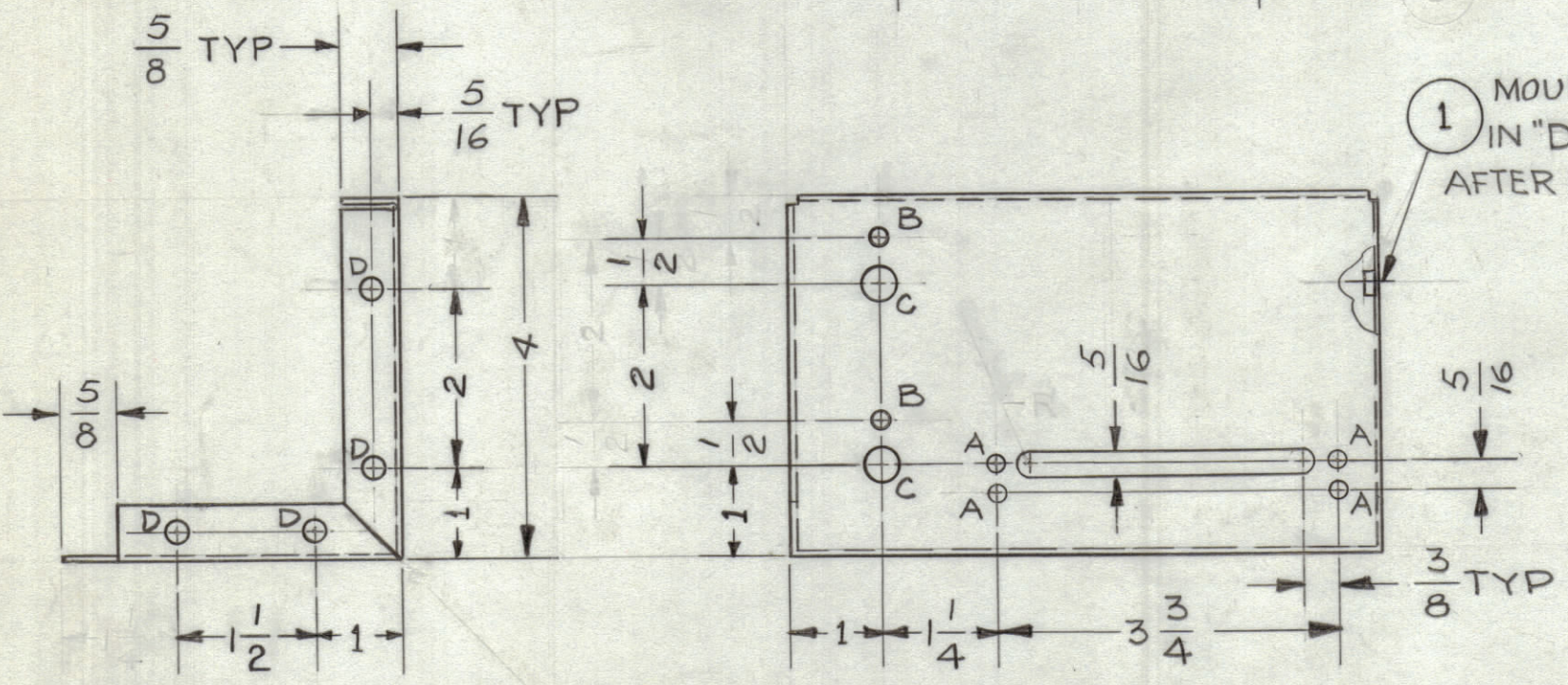
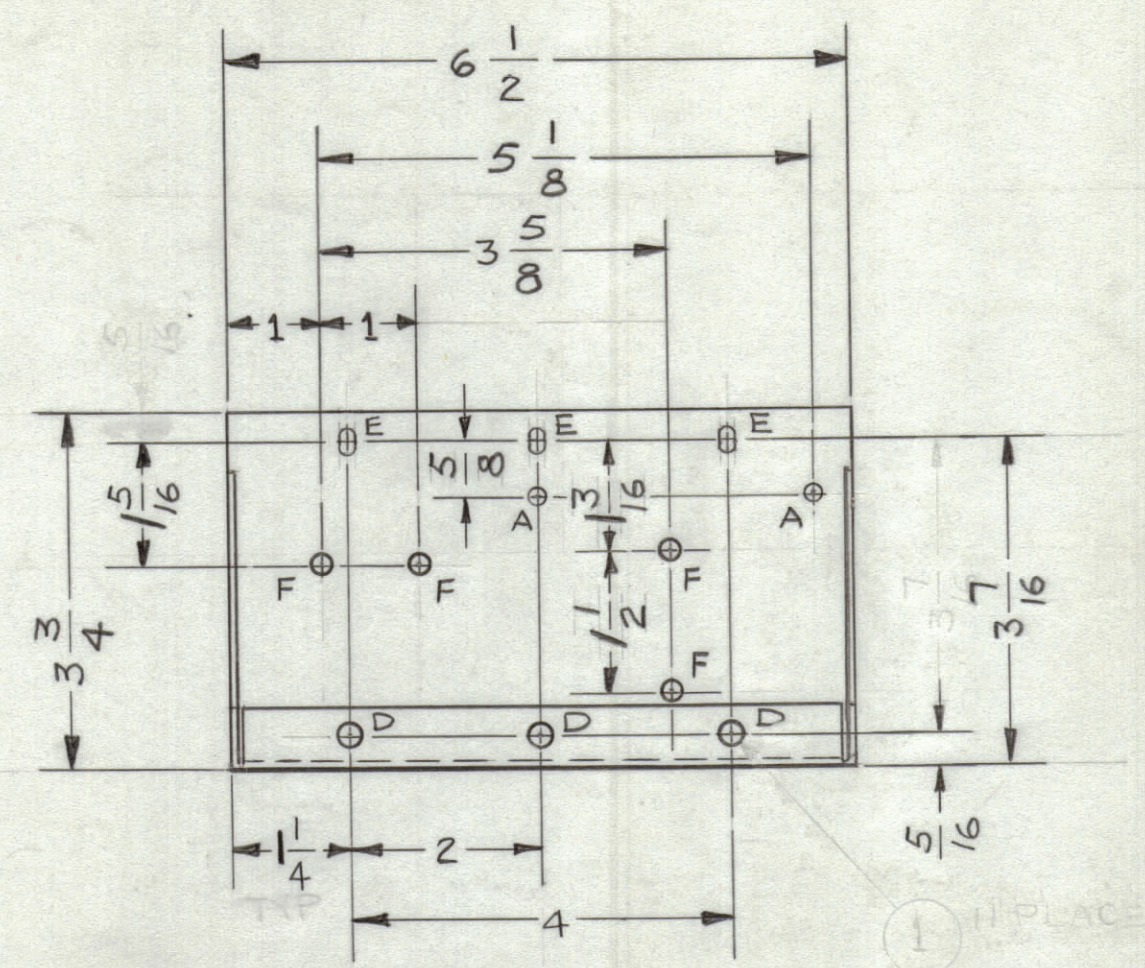


REVISIONS							
ZONE	SYM	DESCRIPTION	DATE	E.M.N. NO.	DRAFT	CHKD	APPD
	X1	COMPLETE REDESIGN	8/29/66	X1	CED	file	
	X2	MODEL WAS "DDR-7M"	11-10-66	X2	HCA		
	Ø	ORIGINAL RELEASE FOR PRODUCTION	12/2/66	Ø	CV		

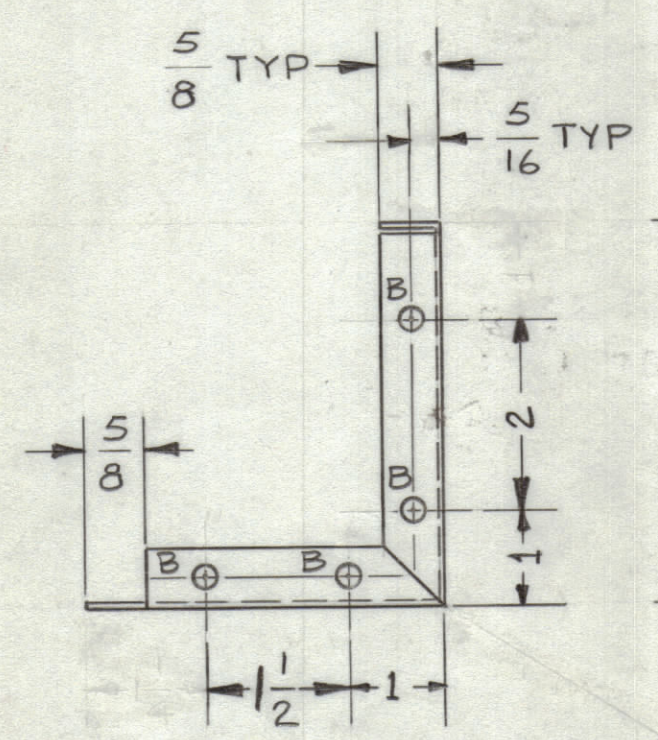
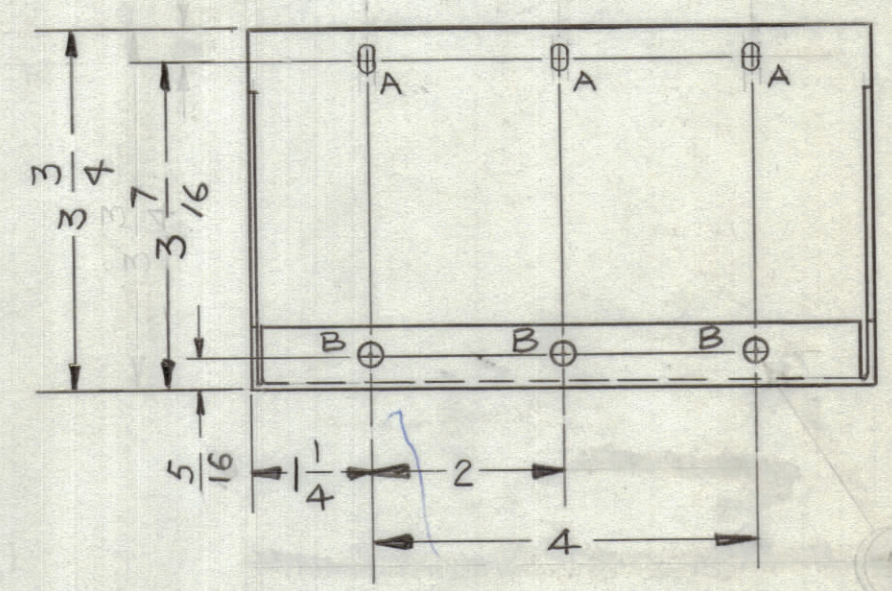


OPPOSITE SIDE SAME

HOLE CHART		
SYM	DESCRIPTION	REQ'D
A	9/64 DIA.	6
B	3/16 DIA.	2
C	3/8 DIA.	2
D	.191-.194 DIA.	11
E	1/64 x 11/32	3
F	1/64 DIA	4

MS 5005-1

1 MOUNT INSERTS IN "D" HOLES AFTER FINISHING



OPPOSITE SIDE SAME

HOLE CHART		
SYM	DESCRIPTION	REQ'D
A	1/64 x 11/32	3
B	.191-.194 DIA	11
C	1/64 DIA	4

MS 5005-2

1 MOUNT INSERTS IN "B" HOLES AFTER FINISHING

MS 5005

SEE DWG	1	NT-129-632	NUT, ROUND, SWAGE TYPE
REQ'D.	ITEM	PART NUMBER	DESCRIPTION
STURMER LIST OF MATERIAL			
MATERIAL	.064 ALUMINUM 5052-H32		THE TECHNICAL MATERIEL CORP. MAMARONECK, NEW YORK
FINISH	S404 YEL IRIDITE		TITLE
			CHASSIS, RELAY
1 EACH	AR181		
Q'TY./UNIT	MODEL USED ON	ASS'Y. NO.	
SCALE	1:2	CODE	
UNLESS OTHERWISE SPECIFIED DIMENSIONS ARE IN INCHES AND INCLUDE CHEMICALLY APPLIED OR PLATED FINISHES			
DECIMALS	TOLERANCES		FRACTIONS
.X ± .05			± 1/64
.XX ± .01			ANGLES ± 0° 30'
.XXX ± .005			
DRAWN	CED	DATE	8/29/66
CHECKED	HCA	DATE	8/31/66
ELECT. DES.		DATE	12-1-66
MECH. DES.		DATE	
FINAL APPROVAL			DATE
[Signature]			12/1/66
SHEET			MS 5005
REV. LTR.			Ø

NOTES

THE CONTENTS OF THIS DRAWING ARE THE EXCLUSIVE PROPERTY OF THE TECHNICAL MATERIEL CORP. ITS UNAUTHORIZED USE OR REPRODUCTION IN WHOLE OR IN PART IS STRICTLY FORBIDDEN.

REPROVAL NO. 440H 21539