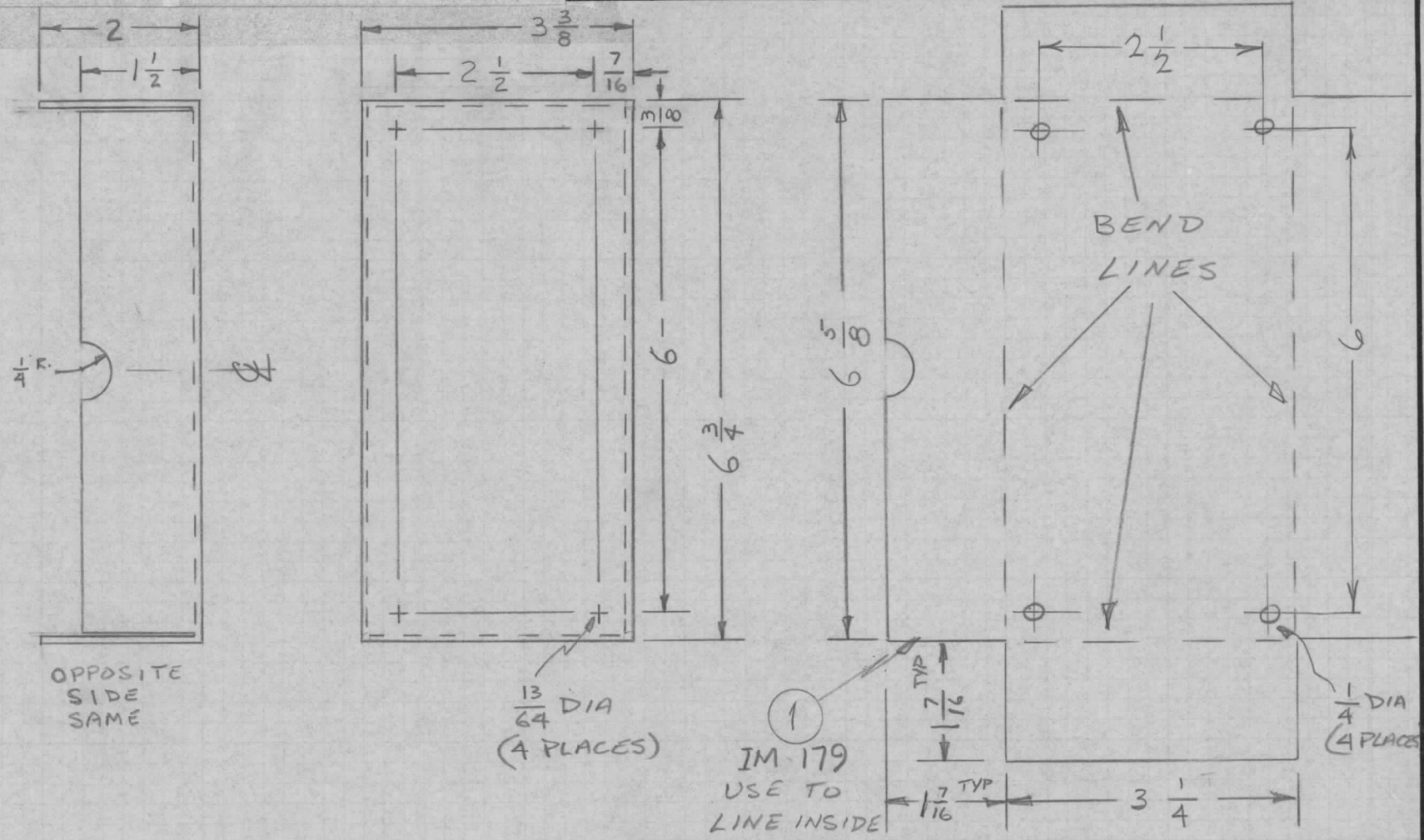


REQ. PER UNIT	USED ON		
	MODEL	ASS'Y. NO.	DATE
1	PTCA-1	RAK-77-2	11/23/65

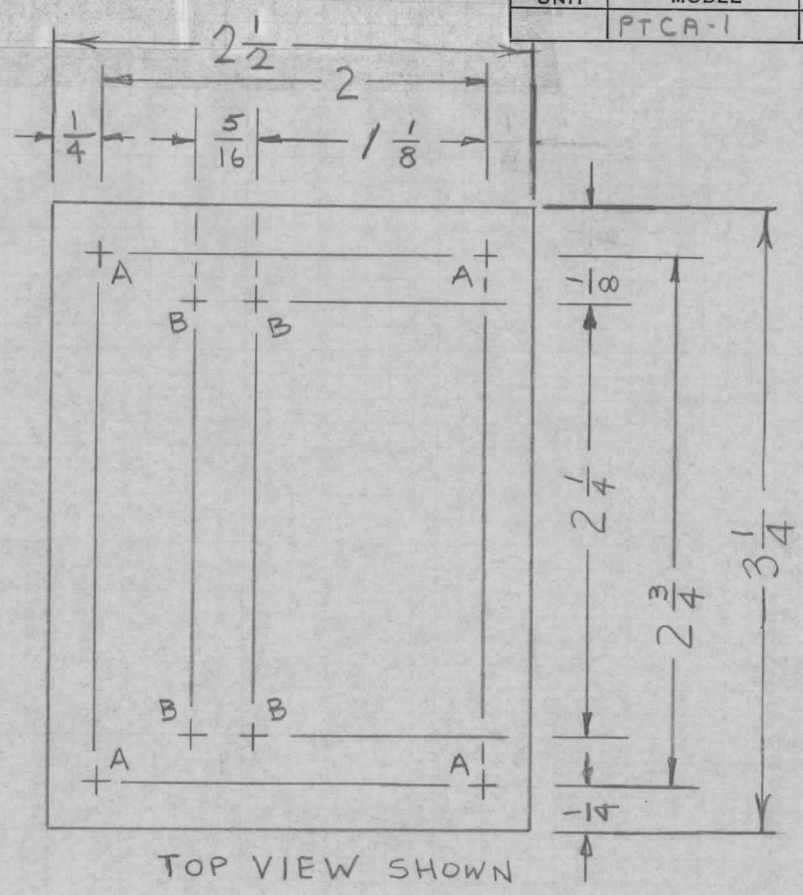
MS4901 \emptyset



		1		IM179		INSULATION, FISH PAPER			
		REQ. ITEM		PART NO.		STURMER DESCRIPTION		SYMBOL	
						.051 THICK STOCK SIZE		THE TECHNICAL MATERIEL CORP. MAMARONECK, NEW YORK	
						ALUMINUM		COVER, TERM. BD. (A1605)	
						MATERIAL			
		DATE		CH. NO.		DRAFTS		CHECKER	
		4/6/66		\emptyset		HUA			
SYM		DESCRIPTION		DATE		CH. NO.		DRAFTS	
		UNLESS OTHERWISE SPECIFIED DIMENSIONS ARE IN INCHES AND INCLUDE CHEMICALLY APPLIED OR PLATED FINISHES		SCALE		5052-H3Y		M. STURMER 11-23-65	
						TYPE & TEMPER		HEAT TREAT. SPEC.	
						3404-IRIDITE		DRAWN	
						FINISH & SPEC. NO.		DRAWN	
								CHECKED	
								FINAL APPROVAL	
								3/1/66	
								MS4901 \emptyset	
DECIMALS		FRACTIONS		CODE		ELEC. DES. APP.		MECH. DES. APP.	
.X \pm .05		\pm 1/64		A					
.XX \pm .01		ANGLES							
.XXX \pm .005		\pm 0° 30'							

REQ. PER UNIT	USED ON		
	MODEL	ASS'Y. NO.	DATE
	PTCA-1	RAK-77-2	

MS4902 A



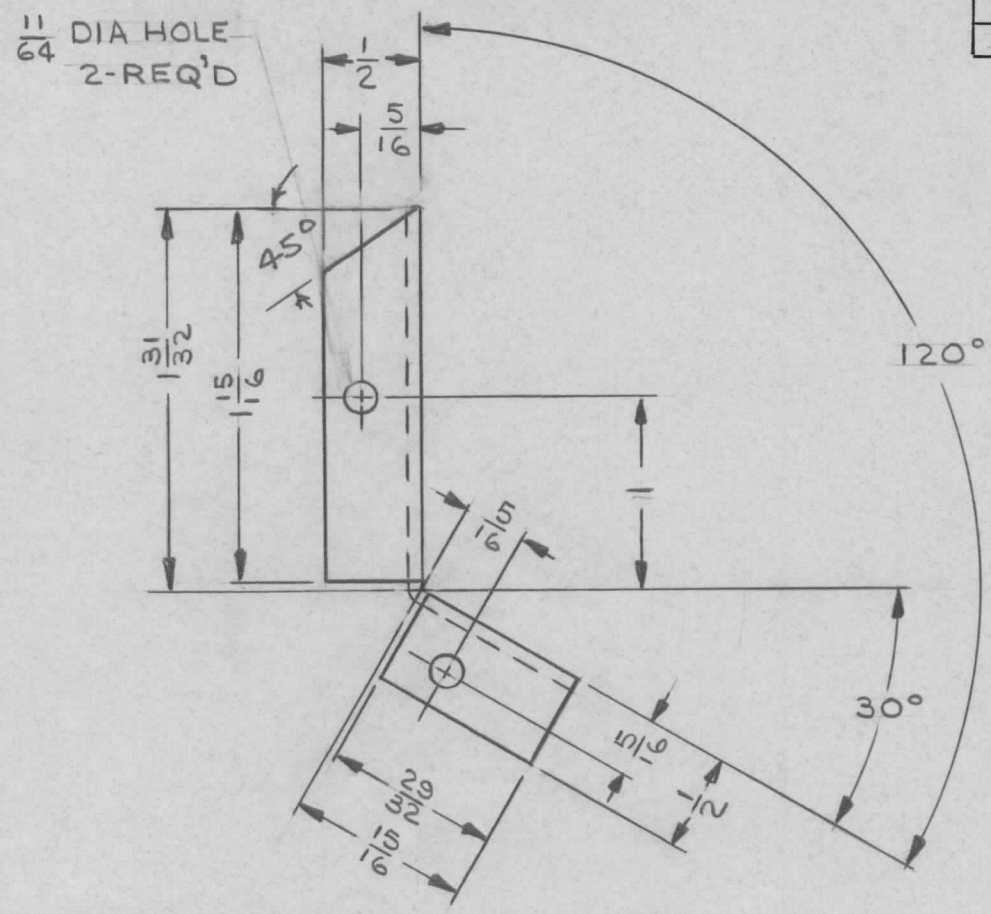
A - 11/64 DIA. (4 REQ'D.)
 B - DRILL .120 DIA THRU, C'SK 82° X .230 DIA FROM REAR (4 REQ'D.)

TOP VIEW SHOWN

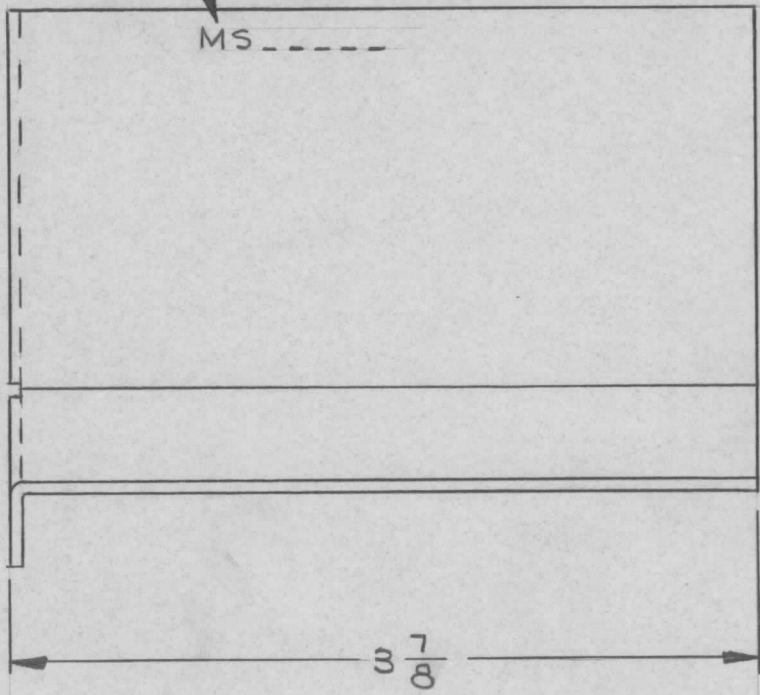
REF: LD2067

							REQ. ITEM	PART NO.	STURMER	DESCRIPTION	MSPE10667H	SYMBOL	
								3 1/4 x 2 1/2 x .064	THE TECHNICAL MATERIEL CORP. MAMARONECK, NEW YORK				
A	"A HOLE WAS 9/64." "B" HOLE #27 DR THRU C'SK 82° X .230 DIA	1-6-67	17625	WHO	QPS	MM		STOCK SIZE	PLATE, T.B. MTG.				
Ø	ORIGINAL RELEASE	4/6/66	Ø	HLA				ALUMINUM					
SYM	DESCRIPTION	DATE	CH. NO.	DRAFTS	CHECKER	ENG. APP.	MATERIAL						
UNLESS OTHERWISE SPECIFIED DIMENSIONS ARE IN INCHES AND INCLUDE CHEMICALLY APPLIED OR PLATED FINISHES			SCALE				5052-H32		M. STURMER	QPS	MM		
							TYPE & TEMPER	HEAT TREAT. SPEC.	11-19-20	CHECKED	FINAL APPROVAL		
DECIMALS .X ± .05 .XX ± .01 .XXX ± .005	TOLERANCES	FRACTIONS ± 1/64 ANGLES ± 0° 30'	CODE					SA04 YEL IRIDITE		3/25/66	MS4902 A		
							FINISH & SPEC. NO.	ELEC. DES. APP.	MECH. DES. APP.				

REQ. PER UNIT	USED ON			MS4903 Ø
	MODEL	ASS'Y. NO.	DATE	
1	RTIH-1		4-1-66	



MARK 1/8 HIGH GOTHIC TMC PT. NO. W/LATEST REV. LETTER
MS



UNLESS OTHERWISE SPECIFIED:

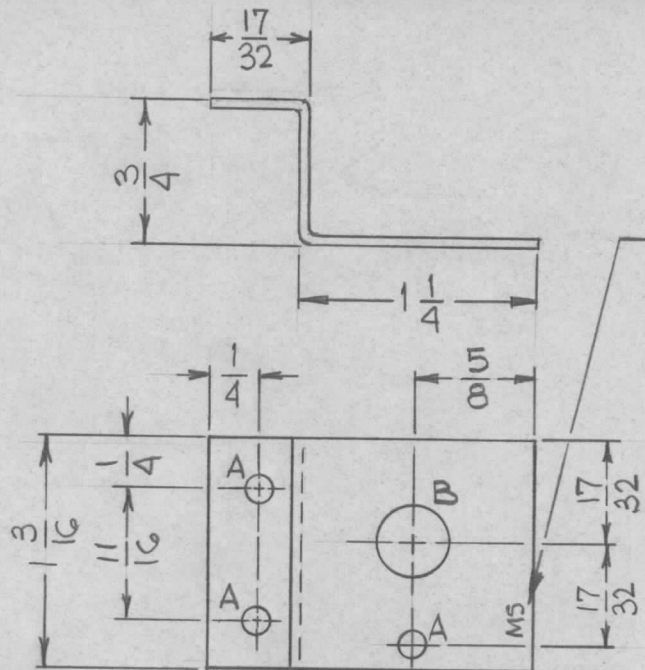
1. USE MATERIAL THICKNESS FOR MAXIMUM RADIUS ON ALL BENDS
2. ALL ANGULAR BENDS 90 DEGREES
3. REMOVE ALL BURRS AND SHARP EDGES

REQ. ITEM	PART NO.	F.E. EATON	DESCRIPTION	SYMBOL							
Ø	ORIGINAL RELEASE	4/18/66	— JC	8/13							
X1	45° CUT ADDED	4/18/66	X1 GDL	HQ							
SYM	DESCRIPTION	DATE	CH. NO.	DRAFTS	CHECKER	ENG. APP.	5052-H32	J. LESHINSKI	4/18/66	MS4903 Ø	
UNLESS OTHERWISE SPECIFIED DIMENSIONS ARE IN INCHES AND INCLUDE CHEMICALLY APPLIED OR PLATED FINISHES							SCALE	1/1			
DECIMALS		FRACTIONS		TOLERANCES		CODE	YELLOW IRIDITE PER S404				
.X ± .05		± 1/64		± 1/64			TYPE & TEMPER		HEAT TREAT. SPEC.		
.XX ± .01		ANGLES		± 0° 30'			DRAWN		CHECKED		
.XXX ± .005							FINISH & SPEC. NO.		ELEC. DES. APP. MECH. DES. APP.		

THE TECHNICAL MATERIEL CORP.
MAMARONECK, NEW YORK

DEFLECTOR, AIR

APPROVAL NO. 4104



MARK TMC PART NO. 1/8
HIGH GOTHIC W/LATEST REV. LETTER

REQ. PER UNIT	USED ON			MS4904 Ø
	MODEL	ASS'Y. NO.	DATE	
1		AXG2B	4.4.66	

HOLE	DESCRIPTION	REQ'D.
A	9/64 DIA.	3
B	3/8 DIA.	1

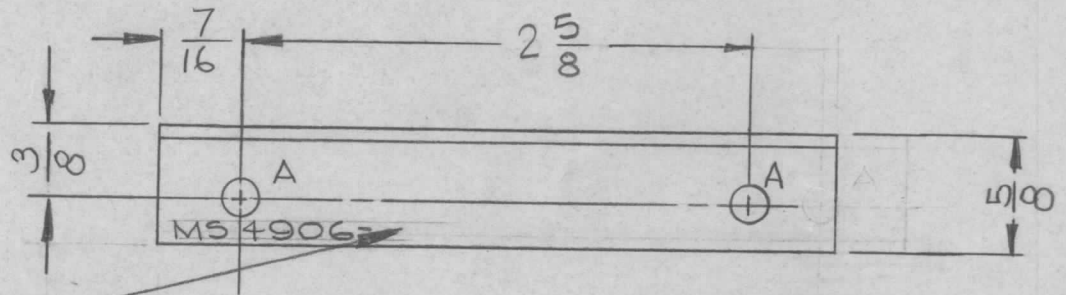
UNLESS OTHERWISE SPECIFIED:

1. USE MATERIAL THICKNESS FOR MAXIMUM RADIUS ON ALL BENDS
2. ALL ANGULAR BENDS 90 DEGREES
3. REMOVE ALL BURRS AND SHARP EDGES

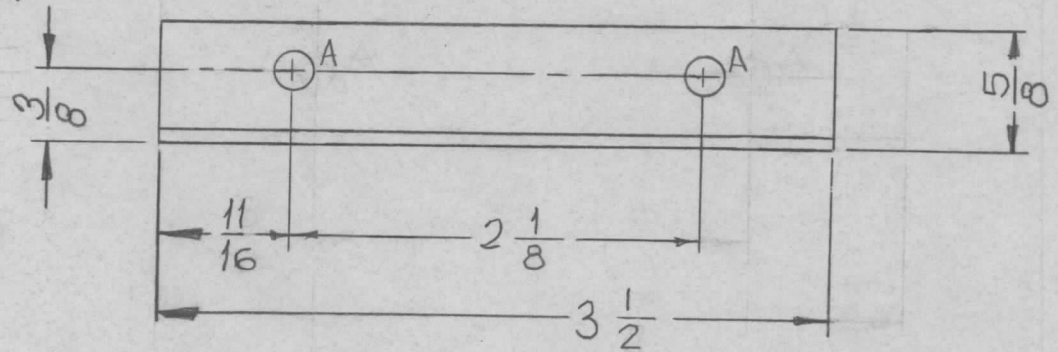
SYM	DESCRIPTION	DATE	CH. NO.	DRAFTS	CHECKER	ENG. APP.	REQ. ITEM	PART NO.	EATON DESCRIPTION	SYMBOL	
Ø	ORIGINAL RELEASE FOR PRODUCTION	4-18-66	Ø	WHD		<i>[Signature]</i>	.050		THE TECHNICAL MATERIEL CORP. MAMARONECK, NEW YORK		
							ALUMINUM		BRACKET, MOUNTING RESISTOR		
							5052-H32		<i>[Signature]</i> 4.4.66 H. AUSTIN		
							TYPE & TEMPER	HEAT TREAT. SPEC.	DRAWN	CHECKED	FINAL APPROVAL
							S404 YEL. IRIDITE		<i>[Signature]</i>	<i>[Signature]</i>	<i>[Signature]</i>
							FINISH & SPEC. NO.	ELEC. DES. APP.	MECH. DES. APP.	MS4904 Ø	

REQ. PER UNIT	USED ON			MS4906	Ø
	MODEL	ASS'Y. NO.	DATE		
2	AD129	A5360	4-11-66		

HOLE	DESCRIPTION	REQ'D
A	13/64 DIA	4



MARK TMC P/N $\frac{1}{8}$
HIGH GOTHIC W/LATEST
REVISION LETTER

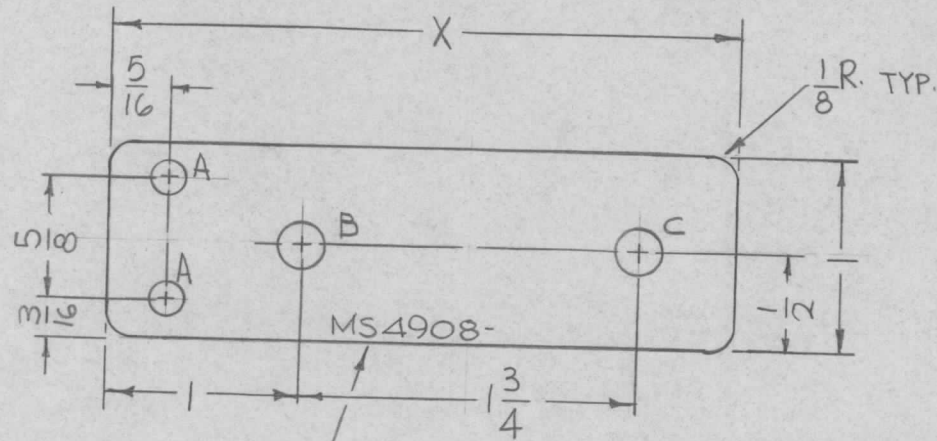


UNLESS OTHERWISE SPECIFIED:

1. USE MATERIAL THICKNESS FOR MAXIMUM RADIUS ON ALL BENDS
2. ALL ANGULAR BENDS 90 DEGREES
3. REMOVE ALL BURRS AND SHARP EDGES

SYM	DESCRIPTION	DATE	CH. NO.	DRAFTS	CHECKER	ENG. APP.	REQ. ITEM	PART NO.	BUDETTI DESCRIPTION	SYMBOL
Ø	ORIGINAL RELEASE FOR PRODUCTION	12.13.66	#	WFO						
X ₁	3 1/2 WAS 3 7/8, HOLES RELOCATED	5-24-66	X ₁	MKT		WFO		.064	THE TECHNICAL MATERIEL CORP. MAMARONECK, NEW YORK	
X	EXPER. RELEASE	4/13/66	#	WFO		WFO		ALUMINUM	BRACKET, RECT. MTG	
	UNLESS OTHERWISE SPECIFIED DIMENSIONS ARE IN INCHES AND INCLUDE CHEMICALLY APPLIED OR PLATED FINISHES			SCALE						
	DECIMALS .X ± .05 .XX ± .01 .XXX ± .005				1:1					
	FRACTIONS ± 1/64 ANGLES ± 0° 30'									
	TOLERANCES									
							5052-H32		WFO	WFO
							TYPE & TEMPER	HEAT TREAT. SPEC.	DRAWN	CHECKED
							S404-YELLOW IBIDITE		WFO	WFO
							FINISH & SPEC. NO.		ELEC. DES. APP.	MECH. DES. APP.
										MS4906 Ø

REQ. PER UNIT	USED ON			MS4908	Ø
	MODEL	ASS'Y. NO.	DATE		
2 EA	AP129	A5361	5-24-66		



MARK TMC P/N
 $\frac{1}{8}$ " HIGH GOTHIC
W/LATEST REV.
LETTER.

HOLE	DESCRIPTION	REQ.
A	11/64 DIA.	2
B	15/64 DIA.	1
C	SEE CHART	1

TMC P/N	X	C HOLE
MS4908-1	1-1/2	NONE
MS4908-2	3-1/4	15/64D.

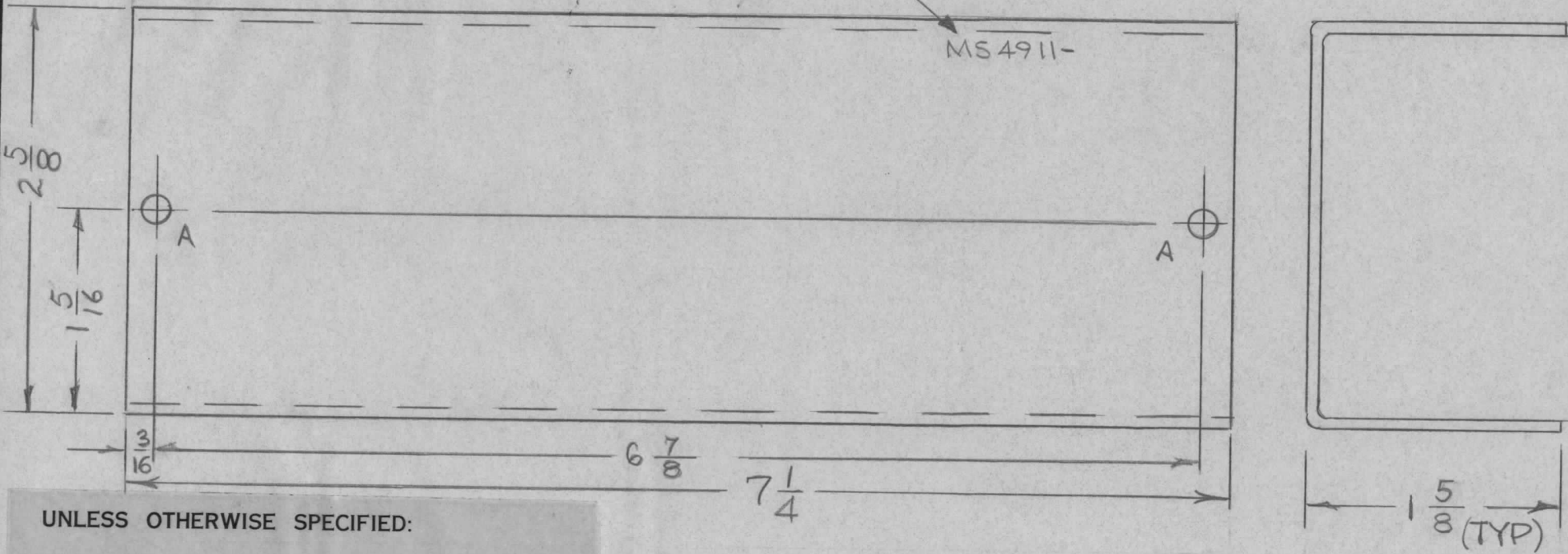
NO LONGER REQ.

Ø	ORIGINAL RELEASE FOR PRODUCTION	11-22-66	Ø	RME				REQ. ITEM	PART NO.	F. BUDETTI	DESCRIPTION	SYMBOL
X1	REDRAWN, MS4908-2 ADDED	5-24-66	X1	<i>MR</i>				.064 THICK			THE TECHNICAL MATERIEL CORP.	
								STOCK SIZE			MAMARONECK.	
								ALUMINUM			NEW YORK	
								MATERIAL			PLATE, MTG RESISTOR	
								5052-H32		<i>MR</i>	<i>MB</i>	<i>MR</i>
								TYPE & TEMPER	HEAT TREAT. SPEC.	DRAWN	CHECKED	FINAL APPROVAL
								5404 YEL. IRIDITE		<i>MR</i>	<i>MR</i>	MS4908
								FINISH & SPEC. NO.		ELEC. DES. APP.	MECH. DES. APP.	Ø

REQ. PER UNIT	USED ON			MS4911 \emptyset
	MODEL	ASS'Y. NO.	DATE	
1	KMCU-1		4-6-66	

A-11/64 DIA. 2REQ.

MARK TMC PART NO.
1/8 HIGH GOTHIC
W/LATEST REV. LETTER



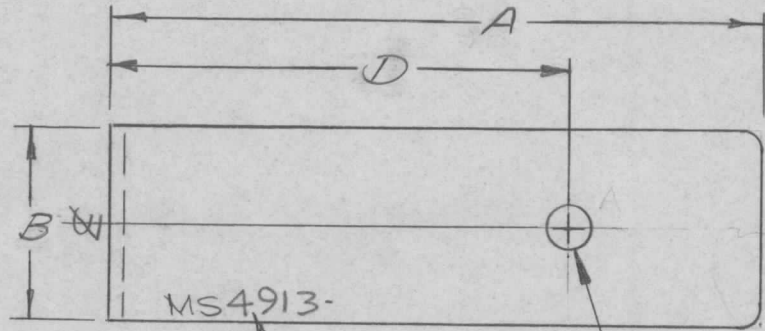
UNLESS OTHERWISE SPECIFIED:

1. USE MATERIAL THICKNESS FOR MAXIMUM RADIUS ON ALL BENDS
2. ALL ANGULAR BENDS 90 DEGREES
3. REMOVE ALL BURRS AND SHARP EDGES

REF LD2072

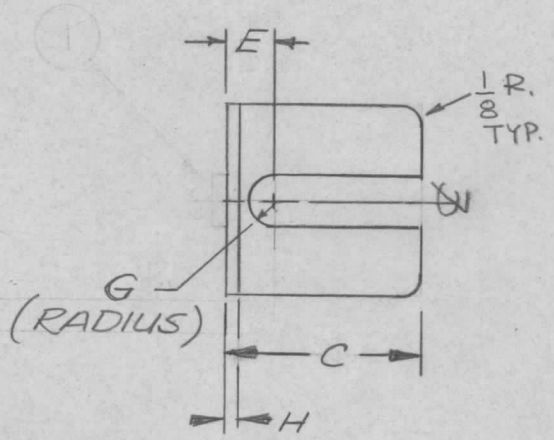
REQ.	ITEM	PART NO.	DESCRIPTION				SYMBOL
\emptyset		.063	THE TECHNICAL MATERIEL CORP.				
		STOCK SIZE	MAMARONECK, NEW YORK				
X		ALUMINUM	COVER, TERMINAL STRIP				
		MATERIAL					
ISSUE	ITEM	CHANGED FROM	DATE	CH. NO.	DRAFTS	CHECKER	ENG. APP.
		ORIGINAL RELEASE FOR PRODUCTION	2.2.67	#		WFO	
		EXP. RELEASE	1.26.67	X		RME	
TOLERANCES			SCALE:				
DEC. DIM. \pm			MAXIMUM ALLOWABLE TOLERANCES HAVE BEEN DETERMINED AND ANY DEVIATIONS WILL BE CAUSE FOR REJECTION. REMOVE ALL BURRS AND SHARP EDGES				
FRAC. DIM. \pm							
ANGULAR DIM. \pm							
5052-H32		TYPE & TEMPER	HEAT TREAT. SPEC.	DRAWN	CHECKED	FINAL APPROVAL	
S404 YEL. IRIDITE						MS4911 \emptyset	
FINISH & SPEC. NO.		ELEC. DES. APP.	MECH. DES. APP.				

TMC P/N	A	B	C	D	E	F	G	H	MATL.	FINISH	REQ. PER UNIT	USED ON			MS4913	A
MS 4913	3 3/8	1	1	2 3/8	1/4	13/64	1/8	.081	5052-H32 ALUM	S404 YEL IRIDITE		MODEL	ASS'Y. NO.	DATE		



MARK TMC P/N
1/8 HIGH GOTHIC
W/LATEST REV.
LETTER.

F DIA.

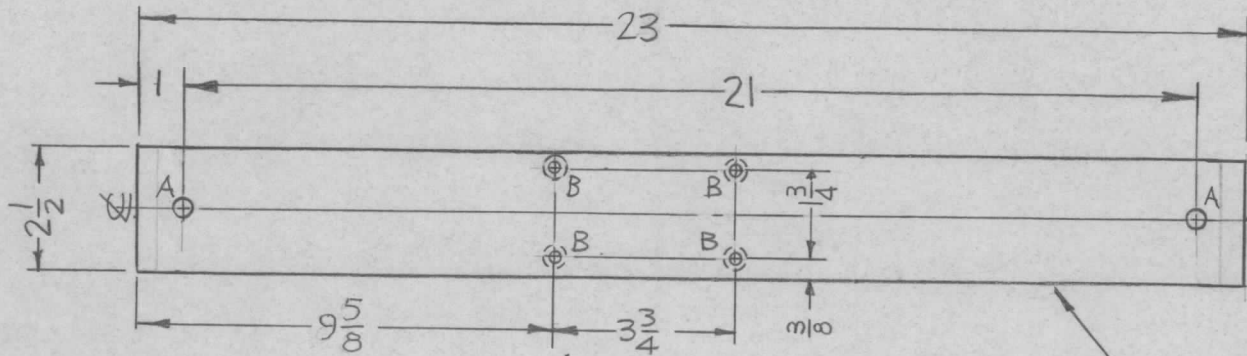


- UNLESS OTHERWISE SPECIFIED:
1. USE MATERIAL THICKNESS FOR MAXIMUM RADIUS ON ALL BENDS
 2. ALL ANGULAR BENDS 90 DEGREES
 3. REMOVE ALL BURRS AND SHARP EDGES

							REQ. ITEM	PART NO.	F. BUDETTI	DESCRIPTION	SYMBOL	
							STOCK SIZE		THE TECHNICAL MATERIEL CORP. MAMARONECK, NEW YORK			
A	DWG. BECAME STD		7.13.72	20790	GE	ES	ES	BRACKET, MTG. CAP. BOARD				
Ø	ORIGINAL RELEASE FOR PRODUCTION		7.11.66	#	W/B							
SYM	DESCRIPTION		DATE	CH. NO.	DRAFTS	CHECKER	ENG. APP.					
UNLESS OTHERWISE SPECIFIED DIMENSIONS ARE IN INCHES AND INCLUDE CHEMICALLY APPLIED OR PLATED FINISHES			SCALE									
			NTS									
DECIMALS		FRACTIONS		CODE		TYPE & TEMPER		HEAT TREAT. SPEC.	DRAWN	CHECKED	FINAL APPROVAL	
.X ± .05		± 1/64		A								
.XX ± .01		ANGLES		STANDARD								
.XXX ± .005		± 0° 30'										
							FINISH & SPEC. NO.		ELEC. DES. APP.	MECH. DES. APP.	MS4913 A	

REQ. PER UNIT	USED ON		
	MODEL	ASS'Y. NO.	DATE
1	KIT-257		4-20-66
1	KIT-258		4-20-66

MS4917 Ø



HOLES:
 A-13/64 DIA. (2REQ.)
 B-DR.120 DIA. C'SINK 82° TO .230 DIA. (4REQ.)

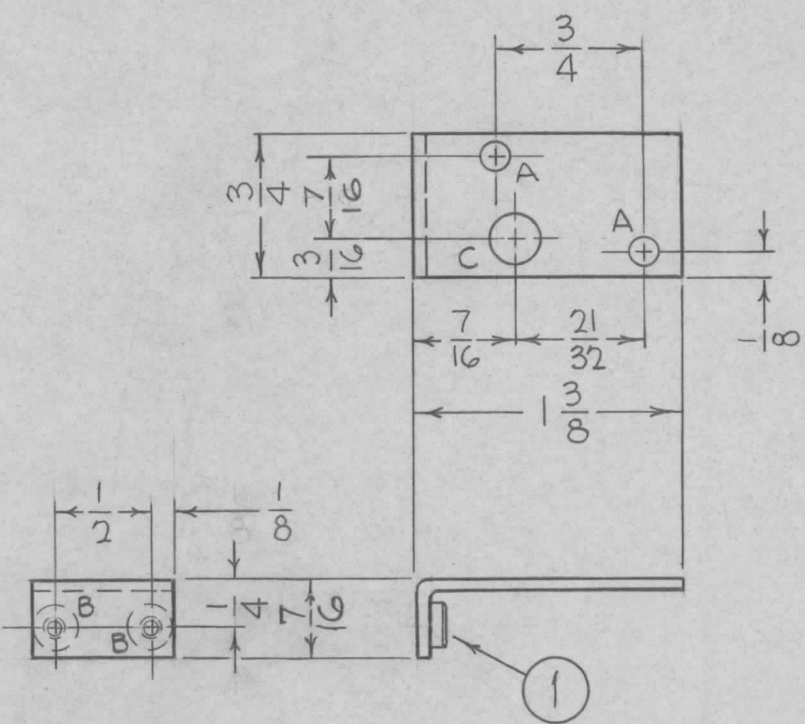
MARK TMC P/N MS4917-
 1/8 HIGH GOTHIC
 W/LATEST REV.
 LETTER.
 (ON REAR)

FINISH NOTES:

1. S404 - IRIDITE 14-2 AL-COAT.
2. S114 - ZINC CHROMATE PRIMER } FRONT AND
3. S115 - SMOOTH GRAY ENAMEL } EDGES ONLY

							REQ. ITEM	PART NO.	F. BUDETTI	DESCRIPTION	SYMBOL	
							.081 THICK		THE TECHNICAL MATERIEL CORP.			
							STOCK SIZE		MAMARONECK, NEW YORK			
							ALUMINUM		PLATE, MTG. NAMEPLATE			
							MATERIAL					
UNLESS OTHERWISE SPECIFIED DIMENSIONS ARE IN INCHES AND INCLUDE CHEMICALLY APPLIED OR PLATED FINISHES							SCALE					
							1/4					
DECIMALS .X ± .05 .XX ± .01 .XXX ± .005							FRACTIONS ± 1/64 ANGLES ± 0° 30'		CODE			
TOLERANCES							A					
ORIGINAL RELEASE FOR PRODUCTION							7.11.66		H		WHD	
SYM DESCRIPTION							DATE		CH. NO.		DRAFTS	
											CHECKER	
											ENG. APP.	
							5052-H32				DRAWN	
							TYPE & TEMPER		HEAT TREAT. SPEC.		CHECKED	
							SEE NOTES		00-7-11-66		MECH. DES. APP.	
							FINISH & SPEC. NO.		ELEC. DES. APP.		MS4917 Ø	

REQ. PER UNIT	USED ON			MS4943 \emptyset
	MODEL	ASS'Y. NO.	DATE	
1	TAA-2.5K	A5495	5-24-66	



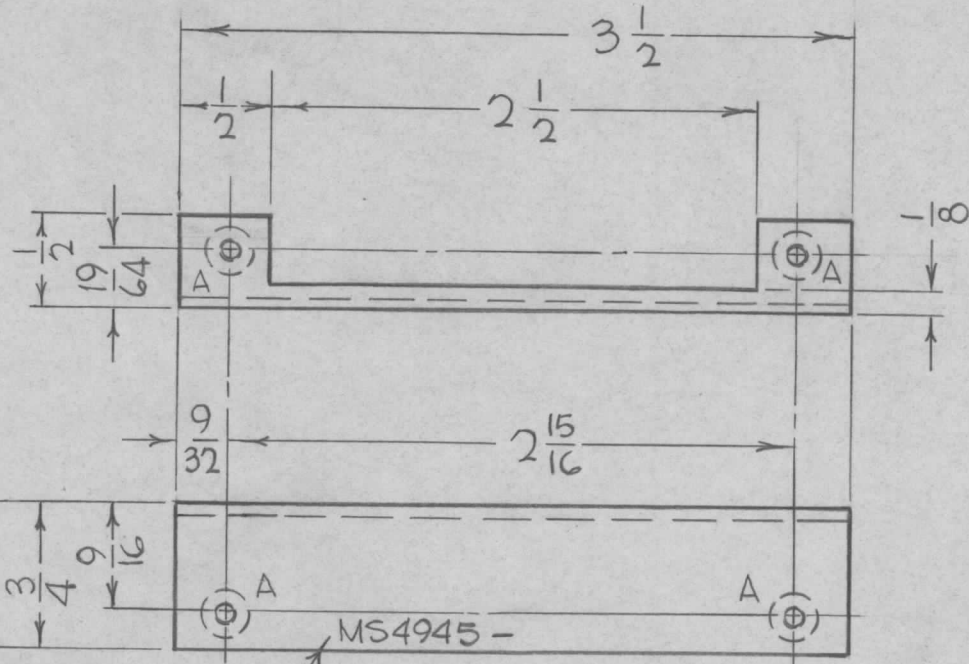
HOLES	REQ.
A - 9/64 DIA.	2
B - .161 - .164 DIA.	2
C - 1/4 DIA.	1

UNLESS OTHERWISE SPECIFIED:

1. USE MATERIAL THICKNESS FOR MAXIMUM RADIUS ON ALL BENDS
2. ALL ANGULAR BENDS 90 DEGREES
3. REMOVE ALL BURRS AND SHARP EDGES
4. MOUNT INSERTS AFTER FINISHING

						2	1	NT129-440-4	NUT, PLAIN, SPLINE			
						REQ. ITEM		PART NO.	BUDETTI DESCRIPTION	SYMBOL		
\emptyset	ORIGINAL RELEASE FOR PRODUCTION	12/2/66	\emptyset	CV				.062 THICK	THE TECHNICAL MATERIEL CORP. MAMARONECK. NEW YORK			
X1	7/16 DIM BETWEEN "C" & "A" HOLES WAS 1/2	8-18-66		JBC				STOCK SIZE	BRACKET, SWITCH MTG.			
X	EXPERIMENTAL RELEASE	6-14-66	X	HA	JCB			ALUMINUM				
SYM	DESCRIPTION	DATE	CH. NO.	DRAFTS	CHECKER	ENG. APP.						
UNLESS OTHERWISE SPECIFIED DIMENSIONS ARE IN INCHES AND INCLUDE CHEMICALLY APPLIED OR PLATED FINISHES						SCALE		5052-H32	JBC	JCB		
								TYPE & TEMPER	HEAT TREAT. SPEC.	DRAWN	CHECKED	FINAL APPROVAL
DECIMALS .X \pm .05 .XX \pm .01 .XXX \pm .005						TOLERANCES						
						CODE		S404-IRIDITE, 14-2 AL-COAT	AA	JCB	MS4943 \emptyset	
								FINISH & SPEC. NO.	ELEC. DES. APP.	MECH. DES. APP.		

REQ. PER UNIT	USED ON			MS4945	Ø
	MODEL	ASS'Y. NO.	DATE		
1	TLAA-2.5K	A5492	5-24-66		



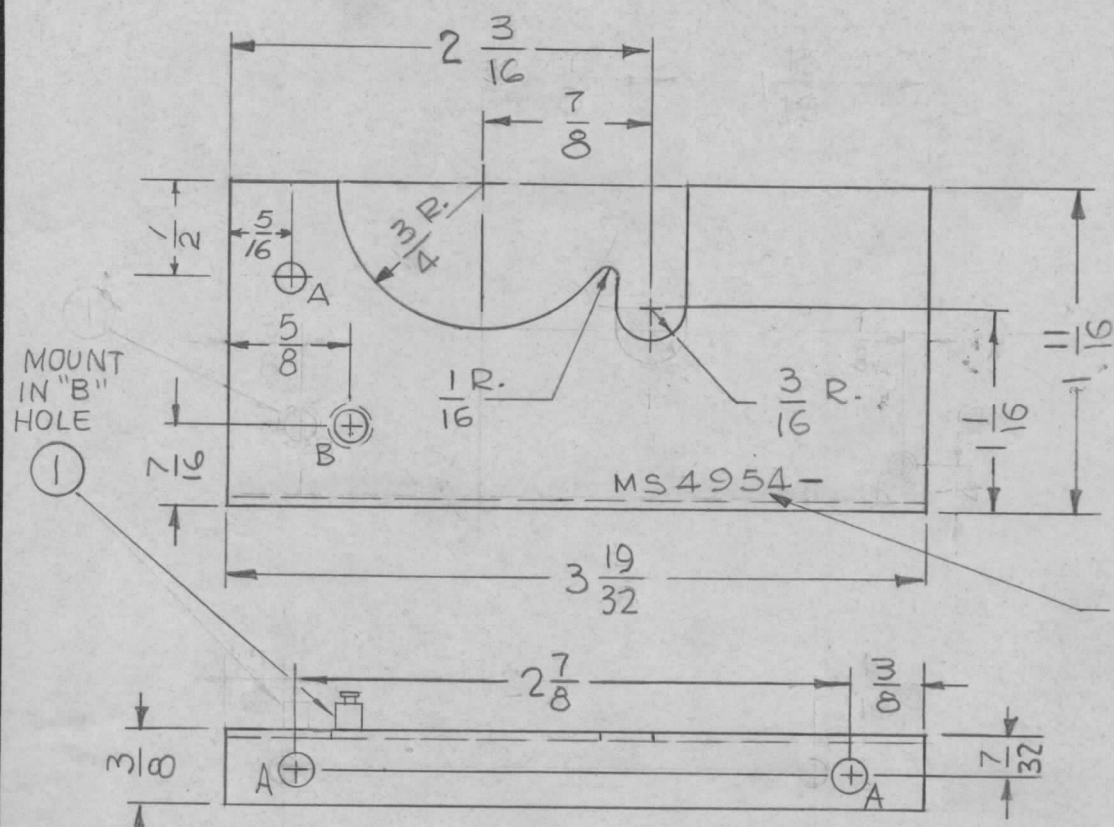
HOLES REQ.
A-.161-.164 DIA. 4

MARK TMC PART NO. 1/8 HIGH GOTHIC, W/LATEST REVISION LETTER.

- UNLESS OTHERWISE SPECIFIED:
1. USE MATERIAL THICKNESS FOR MAXIMUM RADIUS ON ALL BENDS
 2. ALL ANGULAR BENDS 90 DEGREES
 3. REMOVE ALL BURRS AND SHARP EDGES
 4. MOUNT INSERTS AFTER FINISHING

4	1	NT129-440-4	NUT, PLAIN, SPLINE			
REQ.	ITEM	PART NO.	BUDETTI	DESCRIPTION	SYMBOL	
Ø	ORIGINAL RELEASE FOR PRODUCTION	7/28.66	AA	WHD		
X	EXPERIMENTAL RELEASE	6/14.66	X	HLA	QCB	BB
SYM	DESCRIPTION	DATE	CH. NO.	DRAFTS	CHECKER	ENG. APP.
UNLESS OTHERWISE SPECIFIED DIMENSIONS ARE IN INCHES AND INCLUDE CHEMICALLY APPLIED OR PLATED FINISHES		SCALE				
DECIMALS	FRACTIONS	CODE				
.X ± .05	± 1/64					
.XX ± .01	ANGLES					
.XXX ± .005	± 0° 30'					
TOLERANCES						
.062 THICK		THE TECHNICAL MATERIEL CORP. MAMARONECK, NEW YORK				
ALUMINUM		BRKT & CONNECTOR MTG.				
MATERIAL						
5052-H32		JBC	QCB	BB	M. King	
TYPE & TEMPER	HEAT TREAT. SPEC.	DRAWN	CHECKED	FINAL APPROVAL		
S404-IRIDIOTE, 14-2 ALCOAT		NA	BB	MS4945 Ø		
FINISH & SPEC. NO.		ELEC. DES. APP.	MECH. DES. APP.			

REQ. PER UNIT	USED ON			MS4954	B
	MODEL	ASS'Y. NO.	DATE		
1	TLAA-2.5K	A5498	6-7-66		



HOLE -
 A - 9/64 3 REQ.
 B - 158^{+0.002}_{-0.000} DIA. 1 REQ.
 C SINK .175

MARK TMC PART No. 1/8 HIGH GOTHIC W/LATEST REV. LETTER.

- UNLESS OTHERWISE SPECIFIED:
1. USE MATERIAL THICKNESS FOR MAXIMUM RADIUS ON ALL BENDS
 2. ALL ANGULAR BENDS 90 DEGREES
 3. REMOVE ALL BURRS AND SHARP EDGES

B	ADD "A" HOLE CHG. REQ 2-3	2-7-69	19249	GE	<i>JDe</i>	FB	<i>JDe</i>
A	FINISH WAS S245 SILVER PLATE S423 SILVER KOTE	4-24-68	18893	H.S.	<i>MB</i>	FB	<i>JDe</i>
Ø	ORIGINAL RELEASE FOR PRODUCTION	11/17/66	Ø	CV		<i>JDe</i>	
X5	5/B WAS 3/B	11-16-66	X5				
X4	FINISH WAS S404 YEL. IRIDITE	8-5-66	X4				

REQ. ITEM	PART NO.	TERM. FEED THRU INS.	SYMBOL
1	TE169-3		B
.051 THK		THE TECHNICAL MATERIEL CORP. MAMARONECK, NEW YORK	
ALUMINUM		SHIELD, RF	
5052-H32		G.D.L.	<i>[Signature]</i>
TYPE & TEMPER	HEAT TREAT. SPEC.	DRAWN	CHECKED
S404 YEL IDIRITE		<i>[Signature]</i>	<i>[Signature]</i>
FINISH & SPEC. NO.		ELEC. DES. APP.	MECH. DES. APP.
			MS4954 B

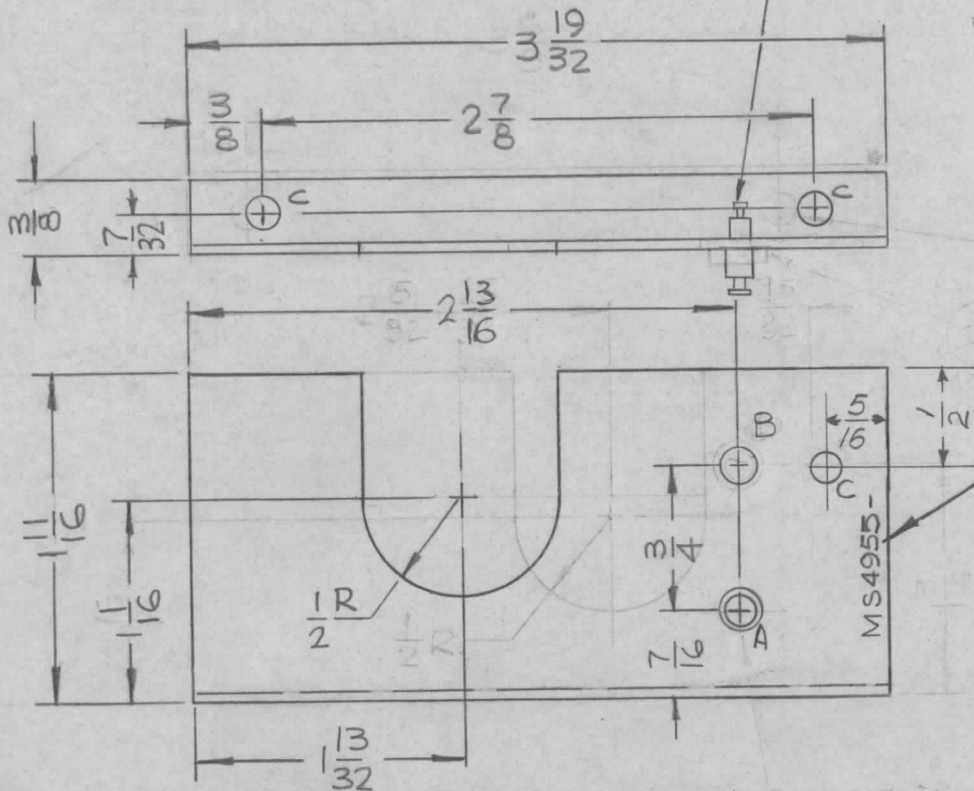
UNLESS OTHERWISE SPECIFIED DIMENSIONS ARE IN INCHES AND INCLUDE CHEMICALLY APPLIED OR PLATED FINISHES

SCALE 1:1

DECIMALS .X ± .05 .XX ± .01 .XXX ± .005	TOLERANCES	FRACTIONS ± 1/64 ANGLES ± 0° 30'	CODE A
--	------------	---	-----------

REQ. PER UNIT	USED ON			MS4955	B
	MODEL	ASS'Y. NO.	DATE		
1	TLAA-2.5K	AS498	6-6-66		

① MOUNT IN "A" HOLE



HOLES: REQ

A ~ .158 ± .003 DIA. C'SINK .175 ——— 1

B ~ 11/64 DIA. ——— 1

C ~ 9/64 DIA. ——— 3

MARK TMC PART NO. 1/8 HIGH GOTHIC W/LATEST REV. LETTER.

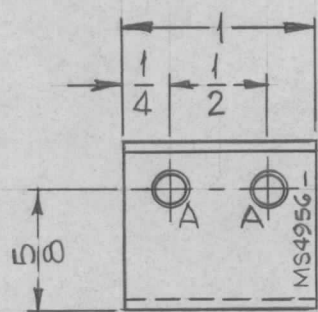
UNLESS OTHERWISE SPECIFIED:

1. USE MATERIAL THICKNESS FOR MAXIMUM RADIUS ON ALL BENDS
2. ALL ANGULAR BENDS 90 DEGREES
3. REMOVE ALL BURRS AND SHARP EDGES

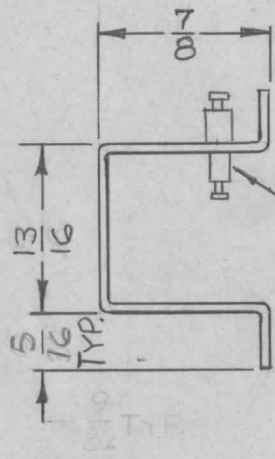
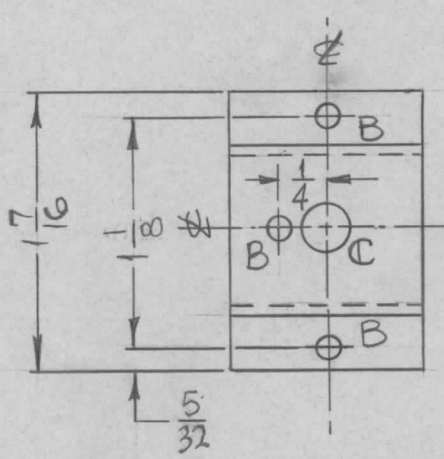
B	ADD "C" HOLE	2-7-69	19248	GE	JDe	FB	JDe
A	FINISH WAS S245 SILVER PLATE S423 SILVER KOTE	4-24-68	18893	H.S.	WJ	FB	JDe
Ø	ORIGINAL RELEASE FOR PRODUCTION	11-16-66	Ø	CV			JDe
X5	NT129, 5/32 H, DEL, B WAS 191-194	11-16-66	X5	PPZ			aa
X4	UPDATED	8-9-66	X4	G.DL	OR		
X3	FINISH WAS S404 YEL. IRIDITE	8-5-66	X3	WJ		BC	
X2	ITEM 1 ADDED	7-30-66	X2	WJ		BC	
X1	COMPLETELY REVISED	7-15-66	X1	WJ		BC	
X	EXPERIMENTAL RELEASE	6-14-66	X	HLA	QB	BC	
SYM	DESCRIPTION	DATE	CH. NO.	DRAFTS	CHECKER	ENG. APP.	
UNLESS OTHERWISE SPECIFIED DIMENSIONS ARE IN INCHES AND INCLUDE CHEMICALLY APPLIED OR PLATED FINISHES		SCALE		1:1			
DECIMALS	FRACTIONS	CODE					
.X ± .05	± 1/64	A					
.XX ± .01	ANGLES						
.XXX ± .005	± 0° 30'						

1	1	TE169-3	TERM. FEED THRU, INS.	B	
REQ. ITEM	PART NO.		BUDETTI	DESCRIPTION	SYMBOL
.051		STOCK SIZE			
ALUMINUM		MATERIAL			
5052-H32		TYPE & TEMPER			
S404 YEL IDIRITE		FINISH & SPEC. NO.			
HAUSTIN		G-6-66		C-6-66	
DRAWN		CHECKED		FINAL APPROVAL	
ELEC. DES. APP.		MECH. DES. APP.		MS4955 B	

REQ. PER UNIT	USED ON			MS4956	Ø
	MODEL	ASS'Y. NO.	DATE		
1	TLAA-2.5K	A5543	6-6-66		



MARK TMC PT. NO. 1/8 HIGH
GOTHIC W/LATEST REV. LETTER



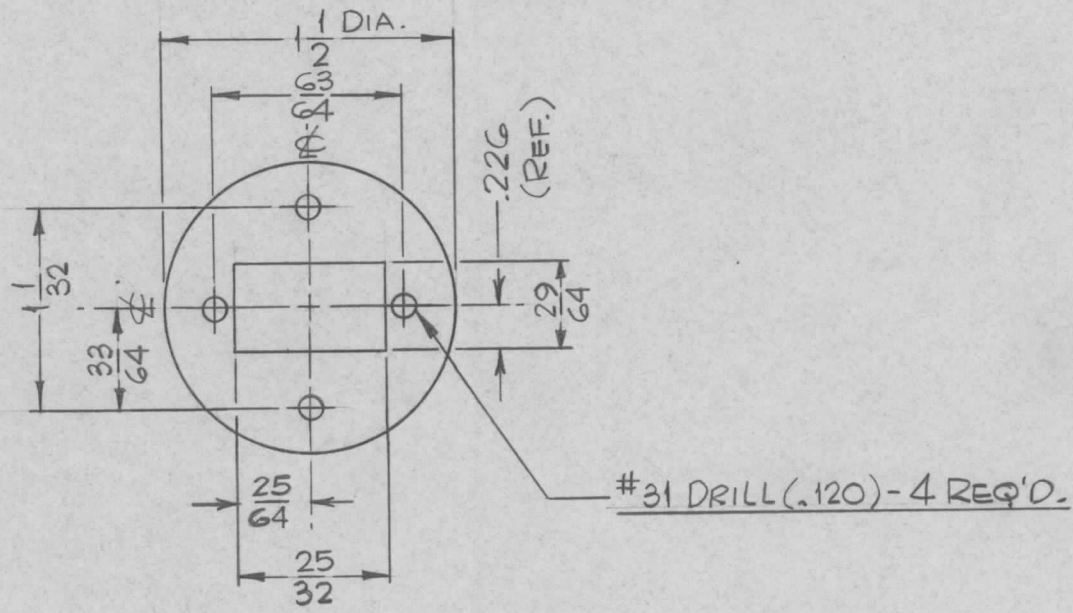
HOLE	DESCRIPTION	REQ'D
A	.158 ^{+0.002} / _{.000} DIA. THRU, C'SK 82° TO .175	2
B	1/8 DIA.	3
C	1/4 DIA.	1

UNLESS OTHERWISE SPECIFIED:

1. USE MATERIAL THICKNESS FOR MAXIMUM RADIUS ON ALL BENDS
2. ALL ANGULAR BENDS 90 DEGREES
3. REMOVE ALL BURRS AND SHARP EDGES

Ø	ORIGINAL RELEASE FOR PRODUCTION	11/18/66	Ø	CV			2	1	TE169-1	TERM. FEED THRU, INS	A			
X3	13/16 WAS 7/8, 1/8 WAS 3/16, 5/32 WAS 1/8	9-27-66	X3	<i>MA</i>			REQ. ITEM		PART NO.	BUDETTI DESCRIPTION	SYMBOL			
X2	ITEM 1 WAS TE169-3	8-4-66	X2	<i>MA</i>					.051	THE TECHNICAL MATERIEL CORP. MAMARONECK, NEW YORK				
X1	ITEM 1 ADDED	7-30-66	X1	<i>MA</i>					STOCK SIZE		BRACKET, ALDC			
X	EXPERIMENTAL RELEASE	6-14-66	X	<i>MA</i>	<i>CB</i>	<i>BE</i>			ALUMINUM					
SYM	DESCRIPTION	DATE	CH. NO.	DRAFTS	CHECKER	ENG. APP.			MATERIAL					
UNLESS OTHERWISE SPECIFIED DIMENSIONS ARE IN INCHES AND INCLUDE CHEMICALLY APPLIED OR PLATED FINISHES			SCALE 1:1						5052-H32	6-6-66	<i>MA</i>	<i>MA</i>		
									TYPE & TEMPER	HEAT TREAT. SPEC.	DRAWN	CHECKED	FINAL APPROVAL	
DECIMALS .X ± .05 .XX ± .01 .XXX ± .005			FRACTIONS ± 1/64 ANGLES ± 0° 30'				CODE A	S404-YELLOW IRIDITE						MS4956
TOLERANCES							FINISH & SPEC. NO.		ELEC. DES. APP.	MECH. DES. APP.				

REQ. PER UNIT	USED ON			MS4960	Ø
	MODEL	ASS'Y. NO.	DATE		
1	TLAA-25K	A5540	6-3-66		

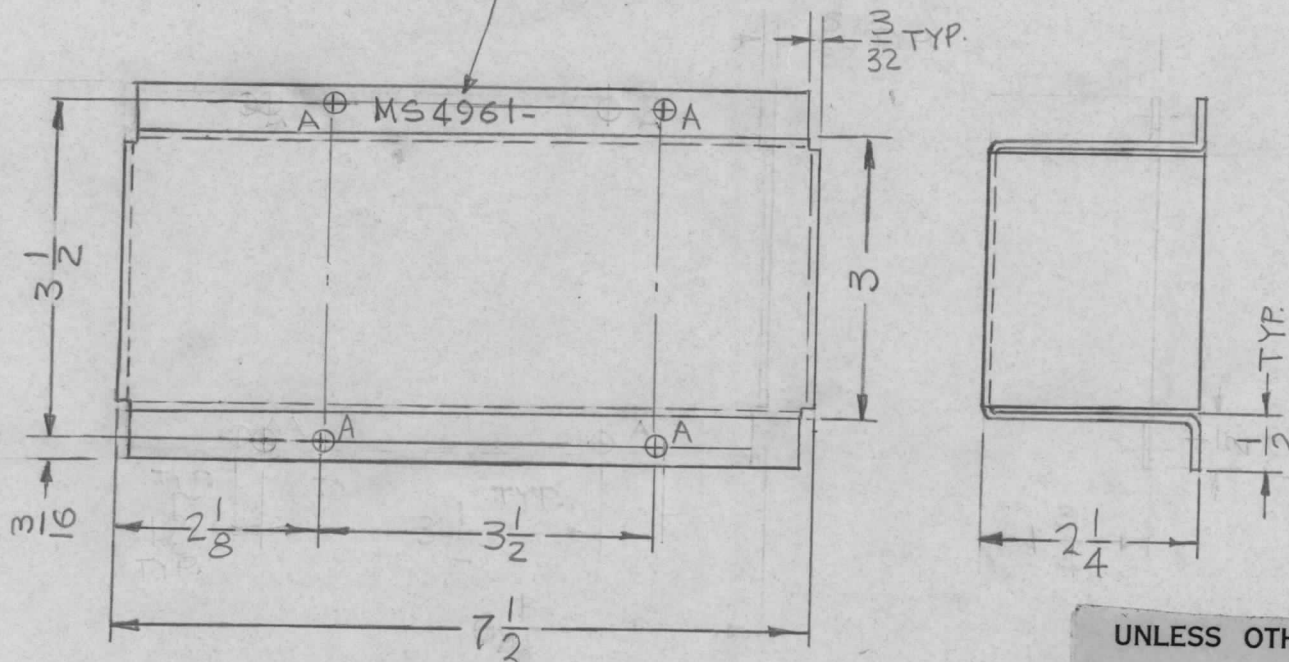


Ø	ORIGINAL RELEASE FOR PRODUCTION	DATE	Ø	CU	REQ. ITEM	PART NO.	BUDETTI	DESCRIPTION	SYMBOL	
X2	.081 WAS 3/16	7-30-66	X2	HLA	.081		THE TECHNICAL MATERIEL CORP. MAMARONECK, NEW YORK			
X1	ADDED ".226 (REF.) DIM. W/1/8" MAT'L	6-15-66	X1	HLA	STOCK SIZE		PLATE, CONNECTOR SWITCH			
X	EXPERIMENTAL RELEASE	6-14-66	X	HLA	ALUMINUM					
SYM	DESCRIPTION	DATE	CH. NO.	DRAFTS	CHECKER	ENG. APP.				
UNLESS OTHERWISE SPECIFIED DIMENSIONS ARE IN INCHES AND INCLUDE CHEMICALLY APPLIED OR PLATED FINISHES		SCALE		1:1						
DECIMALS .X ± .05 .XX ± .01 .XXX ± .005		FRACTIONS ± 1/64 ANGLES ± 0° 30'		TOLERANCES		A				
						5052-H32	6-3-66	H.AUSTIN	JCB	MMY
						TYPE & TEMPER	HEAT TREAT. SPEC.	DRAWN	CHECKED	FINAL APPROVAL
						S404 - YELLOW IRIDITE		da	JCB	MS4960 Ø
						FINISH & SPEC. NO.	ELEC. DES. APP.	MECH. DES. APP.		

REQ. PER UNIT	USED ON			MS4
	MODEL	ASS'Y. NO.	DATE	
1	TLAA-25K	A5497	8-8-66	

MARK TMC P/NO 1/8 HIGH
GOTHIC W/LATEST REV.
LETTER.

- HOLE -
A - 11/64 DIA.



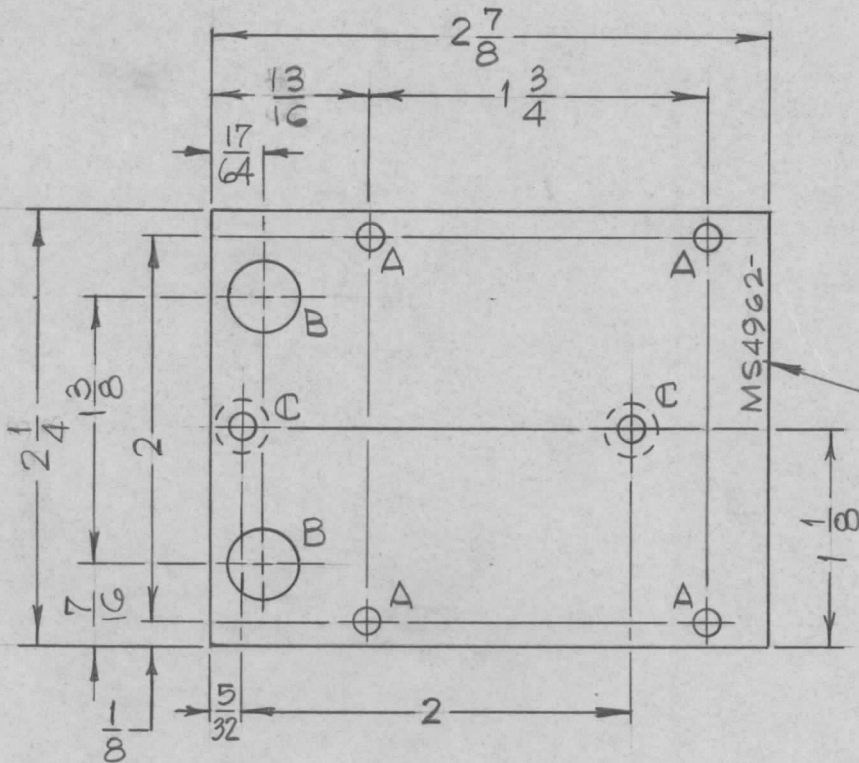
UNLESS OTHERWISE SPECIFIED:

1. USE MATERIAL THICKNESS FOR MAXIMUM RADIUS ON ALL BENDS
2. ALL ANGULAR BENDS 90 DEGREES
3. REMOVE ALL BURRS AND SHARP EDGES

Ø	ORIGINAL RELEASE FOR PRODUCTION	11/64	Ø	CV		
X3	2 1/8, 7 1/2, 2 1/4 WERE 2, 7 1/8, 1-3/4	10-11-66	X3	<i>PSB</i>	<i>PSB</i>	<i>PSB</i>
X2	DIM 7 1/2 WAS 6 3/4 DIM 2 WAS 1 1/4	8-13-66	X2	G.D.L.	<i>PSB</i>	
X1	REVISED & REDRAWN	8-8-66	X1	G.D.L.	<i>PSB</i>	
X	EXPERIMENTAL RELEASE	6-14-66	X	HLA	<i>PSB</i>	<i>PSB</i>
SYM	DESCRIPTION	DATE	CH. NO.	DRAFTS	CHECKER	ENG. APP.
UNLESS OTHERWISE SPECIFIED DIMENSIONS ARE IN INCHES AND INCLUDE CHEMICALLY APPLIED OR PLATED FINISHES		SCALE 1/2 : 1				
DECIMALS X ± .05 XX ± .01 XXX ± .005	TOLERANCES	FRACTIONS ± 1/64 ANGLES ± 0° 30'	CODE A			

REQ. ITEM	PART NO.	BUDETTI	DESCRIPTION			
	.064 THK		THE TECHNICAL MATERIEL CORP MAMARONECK, NEW YORK			
	STOCK SIZE		BOX, DECOUPLER			
	ALUMINUM					
	MATERIAL					
5052-H32		8-8-66 G.D.L.	<i>PSB</i>	<i>PSB</i>	<i>PSB</i>	<i>PSB</i>
TYPE & TEMPER	HEAT TREAT. SPEC.	DRAWN	CHECKED	FINAL APPROVA		
S404 YEL IRIDITE		<i>PSB</i>	<i>PSB</i>	MS4961		
FINISH & SPEC. NO.	ELEC. DES. APP.	MECH. DES. APP.				

REQ. PER UNIT	USED ON		MS4962 ϕ
	MODEL	ASS'Y. NO.	
1	TLAA-2.5K		6-1-66



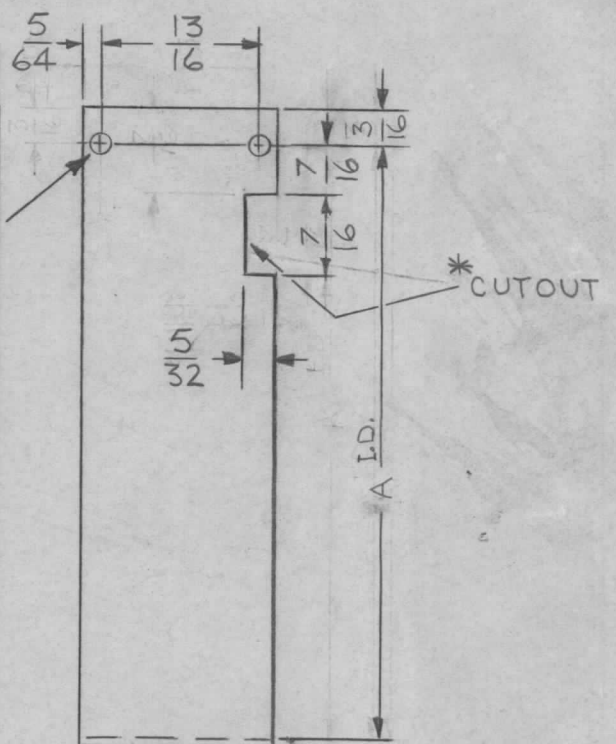
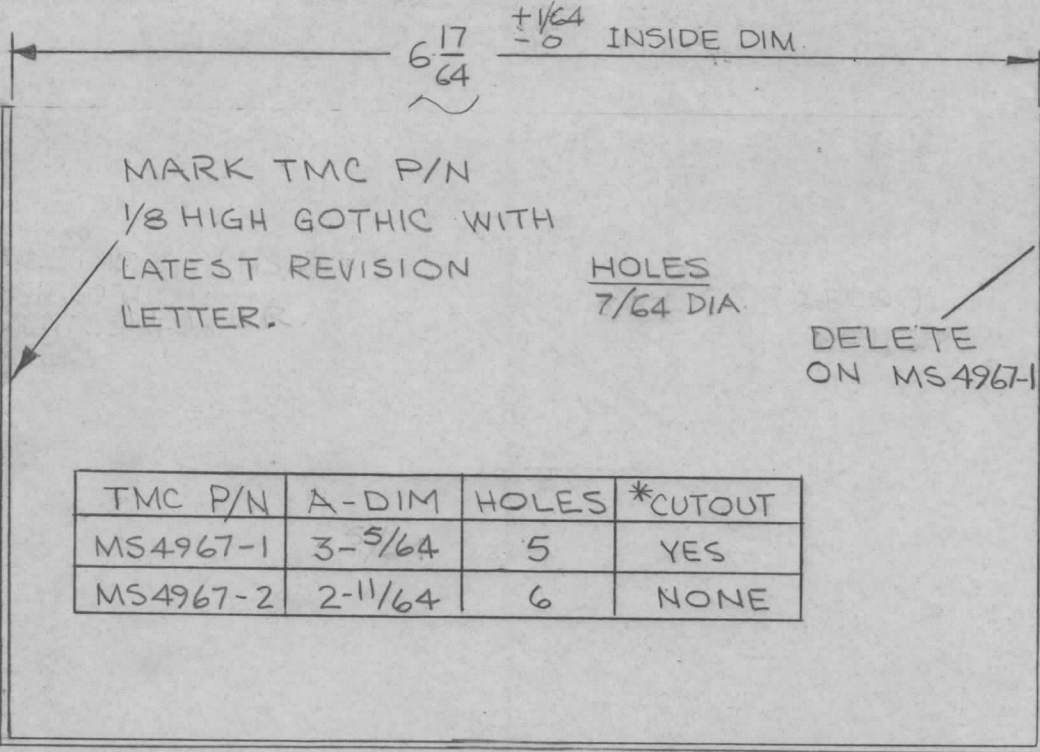
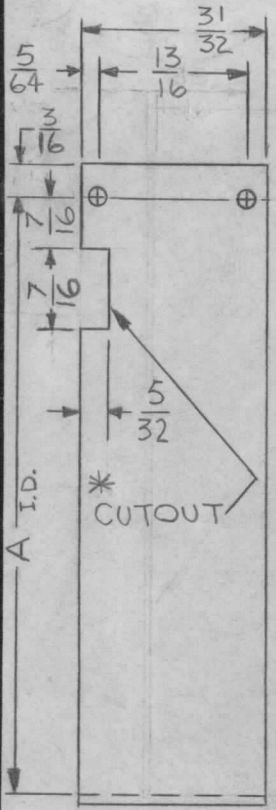
HOLE	DESCRIPTION	REQ.
A	9/64 DIA.	4
B	3/8 DIA.	2
C	.144 DIA., CSK 82° X .284 D.	2

MARK TMC PT. NO. 1/8 HIGH GOTHIC GOTHIC W/LATEST REV. LETTER.

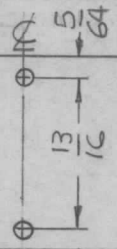
REF: TMC Dwg LD 2132

ϕ	ORIGINAL RELEASE FOR PRODUCTION	3.1.67	#	UHD			REQ. ITEM	PART NO.	BUDETTI	DESCRIPTION	SYMBOL
X ₁	REF: LD 2132 DELETED	2-28-67	X ₁	UHD				1/8 THK		THE TECHNICAL MATERIEL CORP.	
X	EXPERIMENTAL RELEASE	6-1-66	X	HCA				ALUMINUM		MAMARONECK.	
										NEW YORK	
SYM	DESCRIPTION	DATE	CH. NO.	DRAFTS	CHECKER	ENG. APP.				PLATE, MOUNTING	
UNLESS OTHERWISE SPECIFIED DIMENSIONS ARE IN INCHES AND INCLUDE CHEMICALLY APPLIED OR PLATED FINISHES						SCALE					
						1:1					
DECIMALS .X ± .05 .XX ± .01 .XXX ± .005						TOLERANCES					
						FRACTIONS ± 1/64 ANGLES ± 0° 30'					
						CODE					
							5052-H32	6-1-66	H. AUSTIN	JCB	
							TYPE & TEMPER	HEAT TREAT. SPEC.	DRAWN	CHECKED	FINAL APPROVAL
							S404 YELLOW IRIDITE				
							FINISH & SPEC. NO.	ELEC. DES. APP.	MECH. DES. APP.	MS4962 ϕ	

REQ. PER UNIT	USED ON			MS4967	A
	MODEL	ASS'Y. NO.	DATE		
1 EA	TLAA-2.5K	A5541	4-26-66		



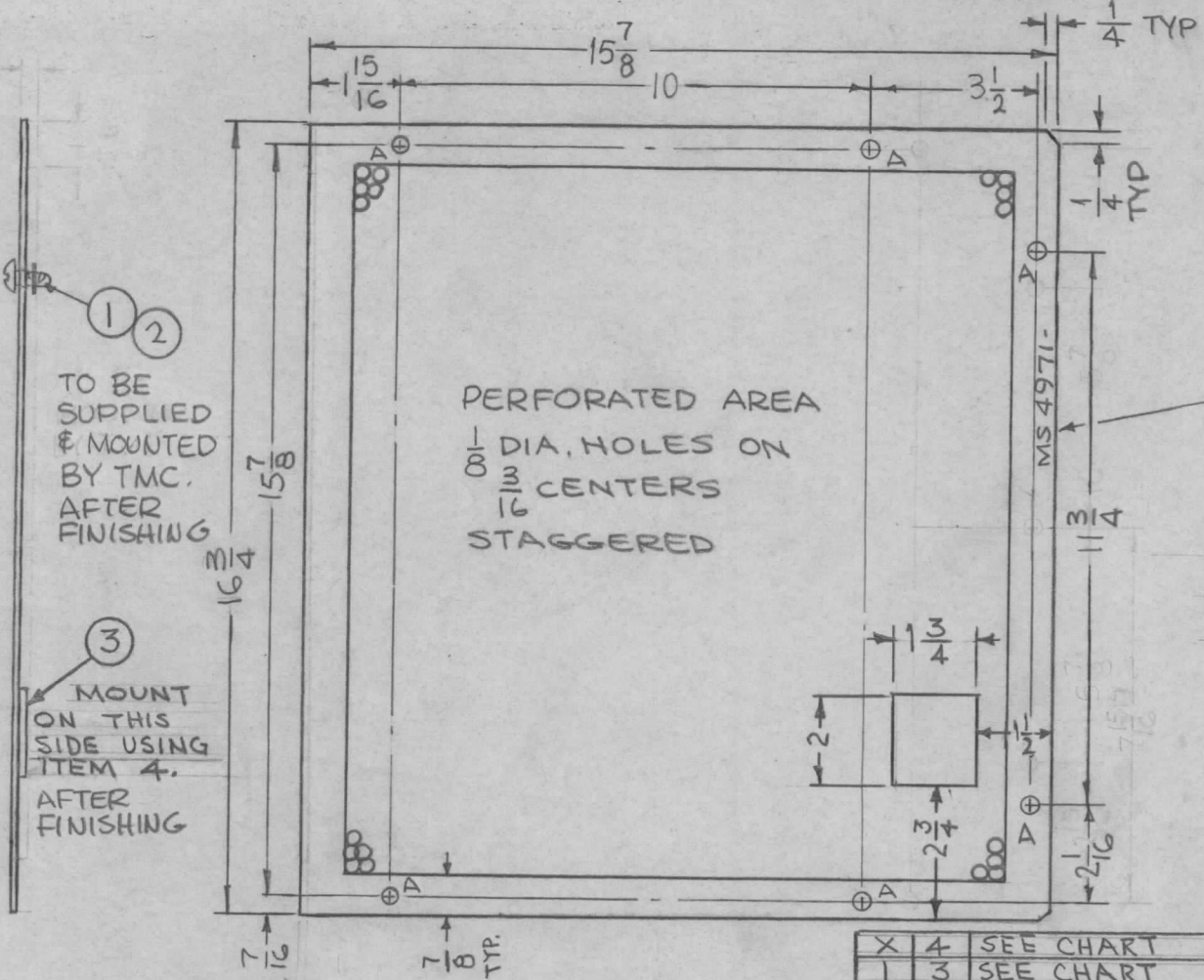
TMC P/N	A-DIM	HOLES	*CUTOUT
MS4967-1	3-5/64	5	YES
MS4967-2	2-11/64	6	NONE



ORIGINAL DRAWING BY
 DATE 11/18/60
 DRAWN BY [Signature]
 CHECKED BY [Signature]
 APPROVED BY [Signature]

SYM	DESCRIPTION	DATE	CH. NO.	DRAFTS	CHECKER	ENG. APP.	REQ. ITEM	PART NO.	F. BUDETTI DESCRIPTION	SYMBOL	
A	DRAWING REVISED	2-17-67	17799	RME	[Signature]		.031 THICK		THE TECHNICAL MATERIEL CORP. MAMARONECK, NEW YORK	MS4967 A	
Ø	ORIGINAL RELEASE FOR PRODUCTION	11/18/60	Ø	CU			STOCK SIZE				
X	EXP. RELEASE	6-13-66	X	[Signature]	[Signature]		ALUMINUM	COVER, GEAR BOX			
UNLESS OTHERWISE SPECIFIED DIMENSIONS ARE IN INCHES AND INCLUDE CHEMICALLY APPLIED OR PLATED FINISHES							SCALE DO NOT SCALE				
DECIMALS .X ± .05 .XX ± .01 .XXX ± .005		FRACTIONS ± 1/64 ANGLES ± 0° 30'		TOLERANCES		CODE A	5052-H32		DRAWN [Signature]	CHECKED [Signature]	FINAL APPROVAL [Signature]
							S404 YEL IRIDITE		ELEC. DES. APP. [Signature]		MECH. DES. APP. [Signature]
							FINISH & SPEC. NO.				

REQ. PER UNIT	USED ON			MS4971	A
	MODEL	ASS'Y. NO.	DATE		
1 ea	API28	A5261	8-31-65		



HOLES:
A - 1/4 DIA. 6 REQ.

MARK TMC PART NO.
1/8" HIGH GOTHIC W/LATEST
REV. LETTER.

TMC P/N	ITEM 3	ITEM 4
MS4971-1	IM 134	GL103
MS4971-2	—	—

TO BE SUPPLIED & MOUNTED BY TMC. AFTER FINISHING

MOUNT ON THIS SIDE USING ITEM 4. AFTER FINISHING

PERFORATED AREA
1/16" DIA. HOLES ON
3/16" CENTERS
STAGGERED

REQ. ITEM	PART NO.	F. BUDETTI DESCRIPTION	SYMBOL
X 4	SEE CHART	ADHESIVE	
1 3	SEE CHART	INSULATION, FISH PAPER	
G 2	FS109-3	RING, RETAINING	
G 1	FS110-7	STUD, TURNLOCK	

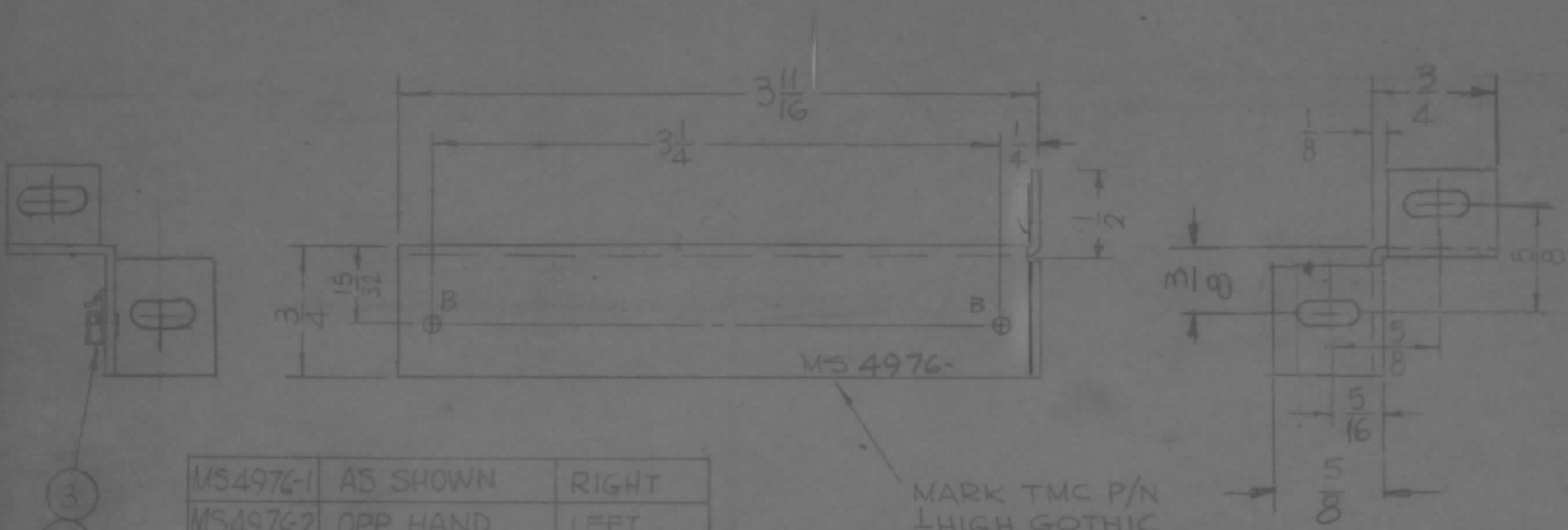
A	ADD IT 3 & 4 & CHART. ADD 1/4 DIM TO CORNERS (2)	11-29-66	17332	RME	JCS	JCS
Q	ORIGINAL RELEASE	11-11-66		WHO		file
X1	ITEM#1 WAS FS110-1	8-26-66	X1			
X	EXP. RELEASE	6-2-66	X			
SYM	DESCRIPTION	DATE	CH. NO.	DRAFTS	CHECKER	ENG. APP.
UNLESS OTHERWISE SPECIFIED DIMENSIONS ARE IN INCHES AND INCLUDE CHEMICALLY APPLIED OR PLATED FINISHES		SCALE 1/4" = 1"				
DECIMALS .X ± .05 .XX ± .01 .XXX ± .005	TOLERANCES	FRACTIONS ± 1/64 ANGLES ± 0° 30'	CODE A			

.051 THICK		THE TECHNICAL MATERIEL CORP. MAMARONECK, NEW YORK			
STOCK SIZE		COVER, TOP & BOTTOM			
ALUMINUM PERFORATED (SEE NOTE)					
MATERIAL					
5052-H32		<i>[Signature]</i>	<i>[Signature]</i>	<i>[Signature]</i>	
TYPE & TEMPER	HEAT TREAT. SPEC.	DRAWN	CHECKED	FINAL APPROVAL	
S404 YEL. IRIDITE		<i>[Signature]</i>	<i>[Signature]</i>	MS4971 A	
FINISH & SPEC. NO.		ELEC. DES. APP.	MECH. DES. APP.		

HOLES:
 A - 3/16 X 3/8 SLOT
 B - 5/64 DIA 2 REQ

REQ. PER UNIT	USED ON		
	MODEL	ASSY. NO.	DATE
	SWCA-3K	A5249	5-17-66

MS4976 A



MS4976-1	AS SHOWN	RIGHT
MS4976-2	OPP. HAND	LEFT

MARK TMC P/N
 1/8" HIGH GOTHIC
 W/LATEST REV
 LETTER.

- UNLESS OTHERWISE SPECIFIED:
1. USE MATERIAL THICKNESS FOR MAXIMUM RADIUS ON ALL BENDS
 2. ALL ANGULAR BENDS 90 DEGREES
 3. REMOVE ALL BURRS AND SHARP EDGES
 4. MOUNT ITEMS 1,2,3 AFTER FINISHING

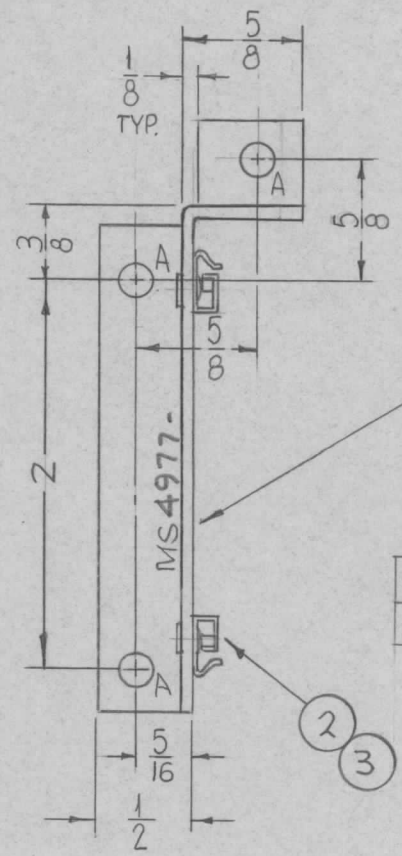
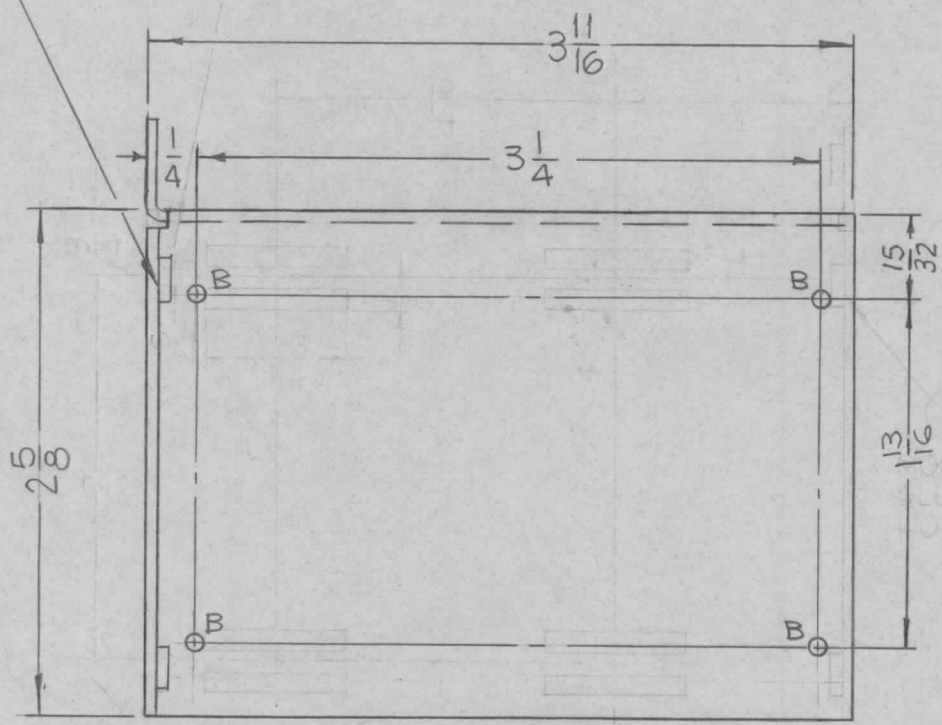
2	3	EY100-5	EYELET, FLAT FLANGE	B
1	2	CU157-4	RETAINER PC BOARD	B
			DELETE	A

REQ. ITEM	PART NO.	F. BUDETTI DESCRIPTION	SYMBOL
	.064	THE TECHNICAL MATERIEL CORP. MAMARONECK, NEW YORK	
	ALUMINUM	BRACKET, MTS PC BOARD	
	5052-H32		
	S404 YEL IRIDITE		
	FINISH & SPEC. NO.	ELEC. DES. APP. MECH. DES. APP.	

A	DIM 3/4 ON RIGH SIDE WAS 5/8 - 5/8 WAS 1/2 - SLOT HOLES ADD ORIGINAL RELEASE FOR PRODUCTION	3-29-76	21514	WJH	*	
Ø		11-22-66	Ø	RMC		
X	EXP RELEASE	6-10-66	X		00	
SYM	DESCRIPTION	DATE	CH. NO.	DRAFTS	CHECKER	ENG. APP.
UNLESS OTHERWISE SPECIFIED DIMENSIONS ARE IN INCHES AND INCLUDE CHEMICALLY APPLIED OR PLATED FINISHES		SCALE 1:1				
DECIMALS	FRACTIONS	CODE				
.X ± .05	± 1/64	A				
.XX ± .01	ANGLES					
.XXX ± .005	± 0° 30'					

REQ. PER UNIT	USED ON		MS4977 ϕ
	MODEL	ASS'Y. NO.	
			5-17-66

1 MOUNT IN ALL "A" HOLES



HOLES:
 A - .191-.194 DIA. (3 REQ.)
 B - 5/64 DIA. (4 REQ.)

MARK TMC P/N
 1/8" HIGH GOTHIC
 W/LATEST REV.
 LETTER.

MS4977-1	AS SHOWN	LEFT
MS4977-2	OPP. HAND	RIGHT

UNLESS OTHERWISE SPECIFIED:

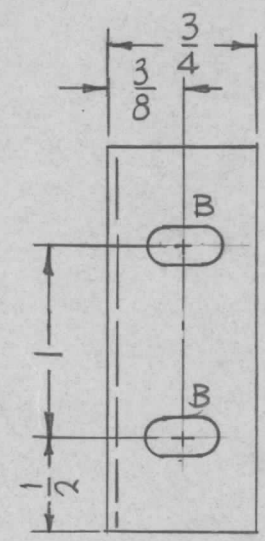
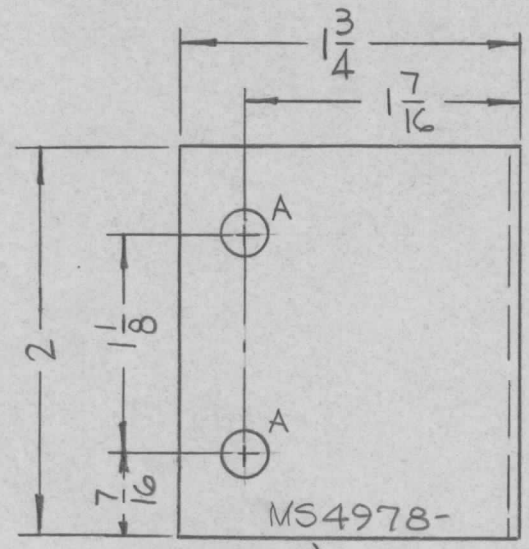
1. USE MATERIAL THICKNESS FOR MAXIMUM RADIUS ON ALL BENDS
2. ALL ANGULAR BENDS 90 DEGREES
3. REMOVE ALL BURRS AND SHARP EDGES
4. MOUNT ITEMS 1,2,3 AFTER FINISHING

4	3	EY100-5	EYELET, FLAT FLANGE	B
1	2	CU157-4	RETAINER, PC BOARD	B
3	1	NT129-632-4	NUT, PLAIN, SPLINE	A

ϕ	ORIGINAL RELEASE EQE PRODUCTION	11-22-66	ϕ	RME		
X ₁	CHART ADDED	6-24-66	X ₁	<i>MS</i>		
X	EXP. RELEASE	6-10-66	X	<i>MS</i>		<i>Qa</i>
SYM	DESCRIPTION	DATE	CH. NO.	DRAFTS	CHECKER	ENG. APP.
UNLESS OTHERWISE SPECIFIED DIMENSIONS ARE IN INCHES AND INCLUDE CHEMICALLY APPLIED OR PLATED FINISHES		SCALE 1:1				
DECIMALS .X \pm .05 .XX \pm .01 .XXX \pm .005	TOLERANCES	FRACTIONS \pm 1/64 ANGLES \pm 0° 30'	CODE A			

REQ. ITEM	PART NO.	F. BUDETTI	DESCRIPTION	SYMBOL
	.064	THE TECHNICAL MATERIEL CORP. MAMARONECK, NEW YORK		
	ALUMINUM	BRACKET, MTG. PC BOARD		
	5052-H32	<i>MS</i>	<i>QCS</i>	<i>Qa R M M</i>
	5404 YEL. IRIDITE	<i>Qa</i>		MS4977 ϕ
	FINISH & SPEC. NO.	ELEC. DES. APP.	MECH. DES. APP.	

REQ. PER UNIT	USED ON			MS4978	Ø
	MODEL	ASS'Y. NO.	DATE		
1	TSTK-2.5K		6-9-66		



HOLES	DESCRIPTION	REQ
A	15/64 DIA.	2
B	3/16 X 3/8 SLOT	2

MARK TMC P/N
 1/8 HIGH GOTHIC
 W/LATEST REV
 LETTER.

- UNLESS OTHERWISE SPECIFIED:
1. USE MATERIAL THICKNESS FOR MAXIMUM RADIUS ON ALL BENDS
 2. ALL ANGULAR BENDS 90 DEGREES
 3. REMOVE ALL BURRS AND SHARP EDGES

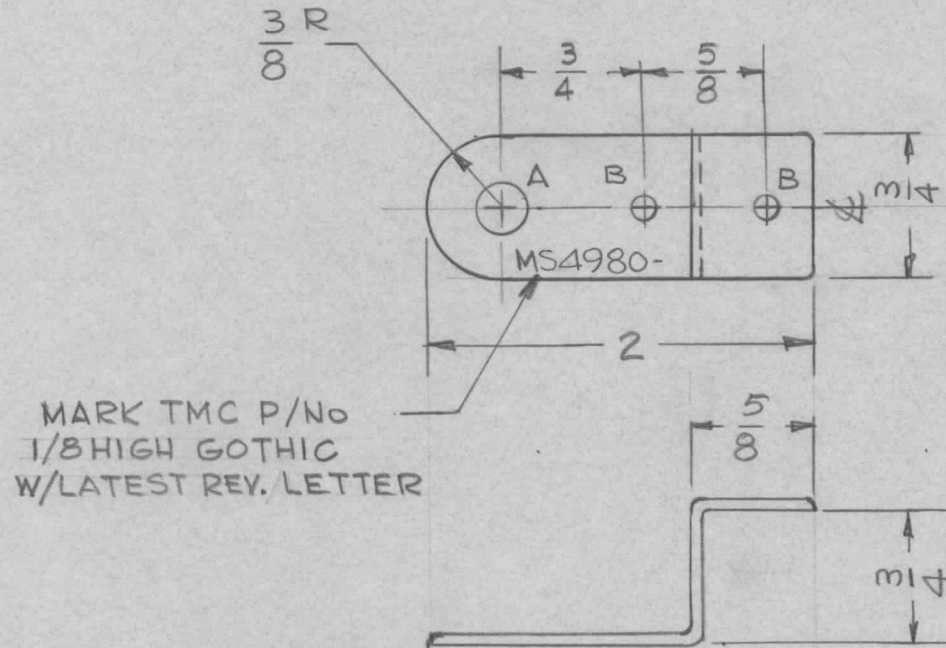
SYM	DESCRIPTION	DATE	CH. NO.	DRAFTS	CHECKER	ENG. APP.	REQ. ITEM	PART NO.	F. BUDETTI	DESCRIPTION	SYMBOL	
Ø	ORIGINAL RELEASE FOR PRODUCTION	12.13.66	44	W/H			.064 THICK		THE TECHNICAL MATERIEL CORP. MAMARONECK, NEW YORK			
X	EXP. RELEASE	6-9-66	X				ALUMINUM		BRACKET, MTG INTERLOCK SWITCH			
	UNLESS OTHERWISE SPECIFIED DIMENSIONS ARE IN INCHES AND INCLUDE CHEMICALLY APPLIED OR PLATED FINISHES	SCALE	1:1				5052-H32		MS	CPB	DBB	
	DECIMALS .X ± .05 .XX ± .01 .XXX ± .005	TOLERANCES	FRACTIONS ± 1/64 ANGLES ± 0° 30'	CODE	A		S404 YEL. IRIDITE		DR	MM	MS4978	Ø
							FINISH & SPEC. NO.		ELEC. DES. APP.	MECH. DES. APP.		

UNLESS OTHERWISE SPECIFIED:

1. USE MATERIAL THICKNESS FOR MAXIMUM RADIUS ON ALL BENDS
2. ALL ANGULAR BENDS 90 DEGREES
3. REMOVE ALL BURRS AND SHARP EDGES

REQ. PER UNIT	USED ON			MS4980
	MODEL	ASS'Y. NO.	DATE	
1	TLAA-25K	AS128	8-9-66	

HOLE	DESCRIPTION	REQ
A	9/32 DIA	1
B	11/64 DIA	2

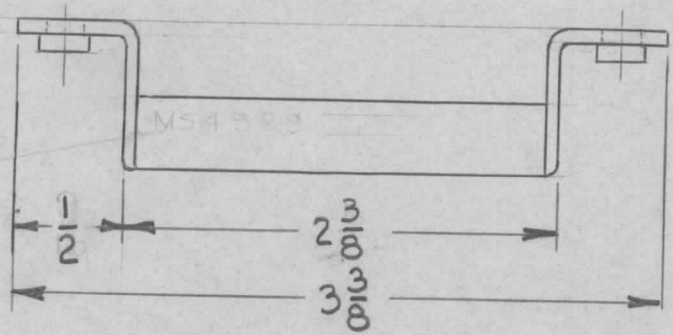


- NOTE -
ROUND ALL EDGES
1/64 R APPROX

REQ.	ITEM	PART NO.	BUDETTI DESCRIPTION				SYMBOL					
Q	ORIGINAL RELEASE	11.11.66	W	WLB	JLB	.064 THK		THE TECHNICAL MATERIEL CORP. MAMARONECK, NEW YORK				
XI	REVISED & REDRAWN	8-9-66	XI	G.D.L	QJB	STOCK SIZE						
X	EXPER. RELEASE	6-16-66	W	JC	JLB	COPPER						
SYM	DESCRIPTION	DATE	CH. NO.	DRAFTS	CHECKER	ENG. APP.	MATERIAL					
UNLESS OTHERWISE SPECIFIED		SCALE		1:1				HALF HARD	8-9-66	QJB	QJB	WLB
DIMENSIONS ARE IN INCHES AND INCLUDE CHEMICALLY APPLIED OR PLATED FINISHES								TYPE & TEMPER	HEAT TREAT. SPEC.	DRAWN	CHECKED	FINAL APPROVAL
DECIMALS		FRACTIONS		CODE				5245 SILVER PLATE		QJB	QJB	MS4980
.X ± .05		± 1/64		A				5423 SILVER KOTE				
.XX ± .01		ANGLES						FINISH & SPEC. NO.	ELEC. DES. APP.	MECH. DES. APP.		
.XXX ± .005		± 0° 30'										

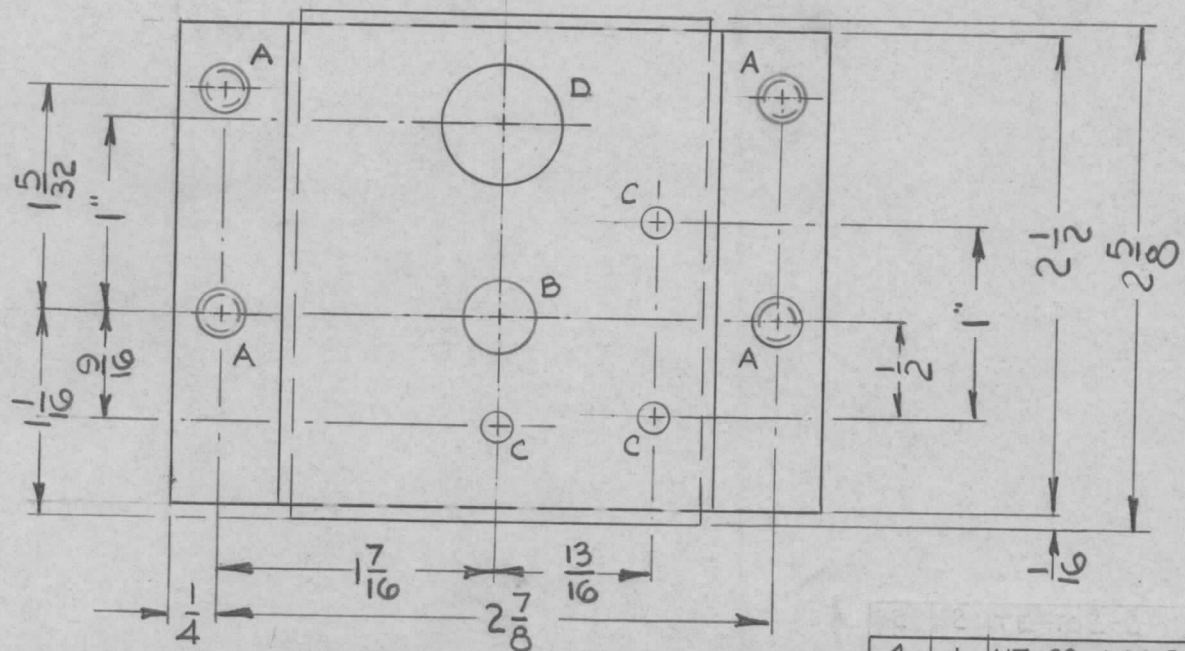
REQ. PER UNIT	USED ON		
	MODEL	ASS'Y. NO.	DATE
1	LSCA-1		

MS4989 \emptyset

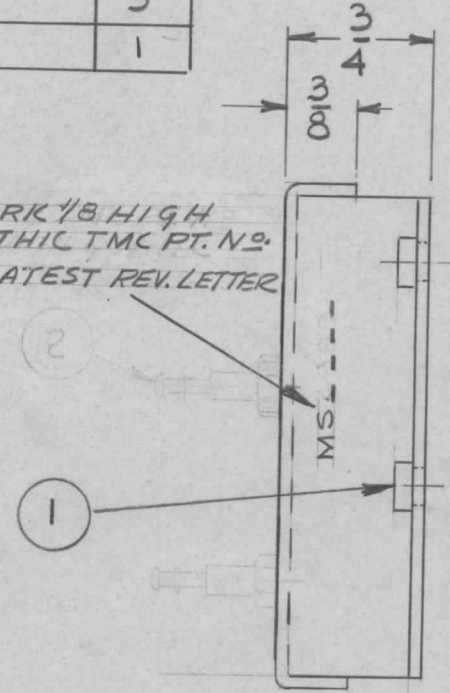


HOLE	DIAMETER	REQ.
A	.191 -.194	4
B	3/8	1
C	5/32	3
D	5/8	1

METAL STAMP
M&E TMC CO
P.O. BOX 144
DUNELM, W. VA.
PER LETTER



MARK 1/8 HIGH
GOTHIC TMC PT. NO.
W/LATEST REV. LETTER

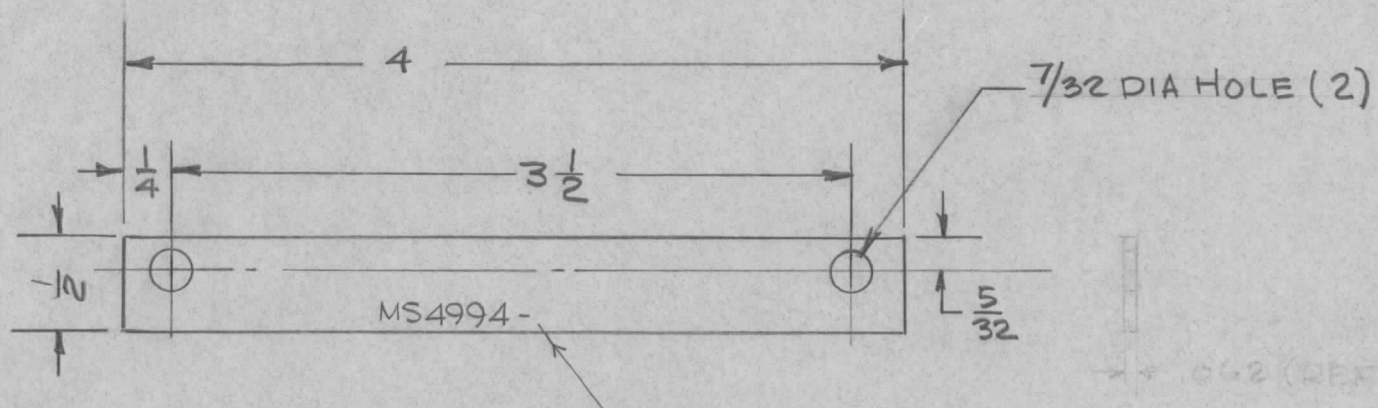


REF. LD 2114

\emptyset	ORIGINAL RELEASE FOR PRODUCTION	9.12.66	#	WFO	JDE	
X ₁	REMOVED ITEM 2 WAS 7E102-2	7/27/66		JL		
X	EXPERIMENTAL RELEASE	6-12-66		B		
SYM	DESCRIPTION	DATE	CH. NO.	DRAFTS	CHECKER	ENG. APP.
UNLESS OTHERWISE SPECIFIED DIMENSIONS ARE IN INCHES AND INCLUDE CHEMICALLY APPLIED OR PLATED FINISHES		SCALE FULL				
DECIMALS .X ± .05 .XX ± .01 .XXX ± .005	TOLERANCES	FRACTIONS ± 1/64 ANGLES ± 0° 30'	CODE SK-3233-1			

4	1	NT-129-6-32-3	NUT, SWAGE		
REQ. ITEM	PART NO.		EATON	DESCRIPTION	SYMBOL
.064 THK.			THE TECHNICAL MATERIEL CORP.		
STOCK SIZE			MAMARONECK, NEW YORK		
ALUMINUM			BRACKET, LEDEX SWITCH		
MATERIAL					
5052-H32	HEAT TREAT. SPEC.		6-12-66	DRAWN	
YELLOW IRIDITE		FINISH & SPEC. NO.		CHECKED	
ELEC. DES. APP.		MECH. DES. APP.		FINAL APPROVAL	
		B. Barnes		MS 4989 \emptyset	

REQ. PER UNIT	USED ON			MS4994	Ø
	MODEL	ASS'Y. NO.	DATE		
1	TLAA-2.5K	A5493	6-16-66		

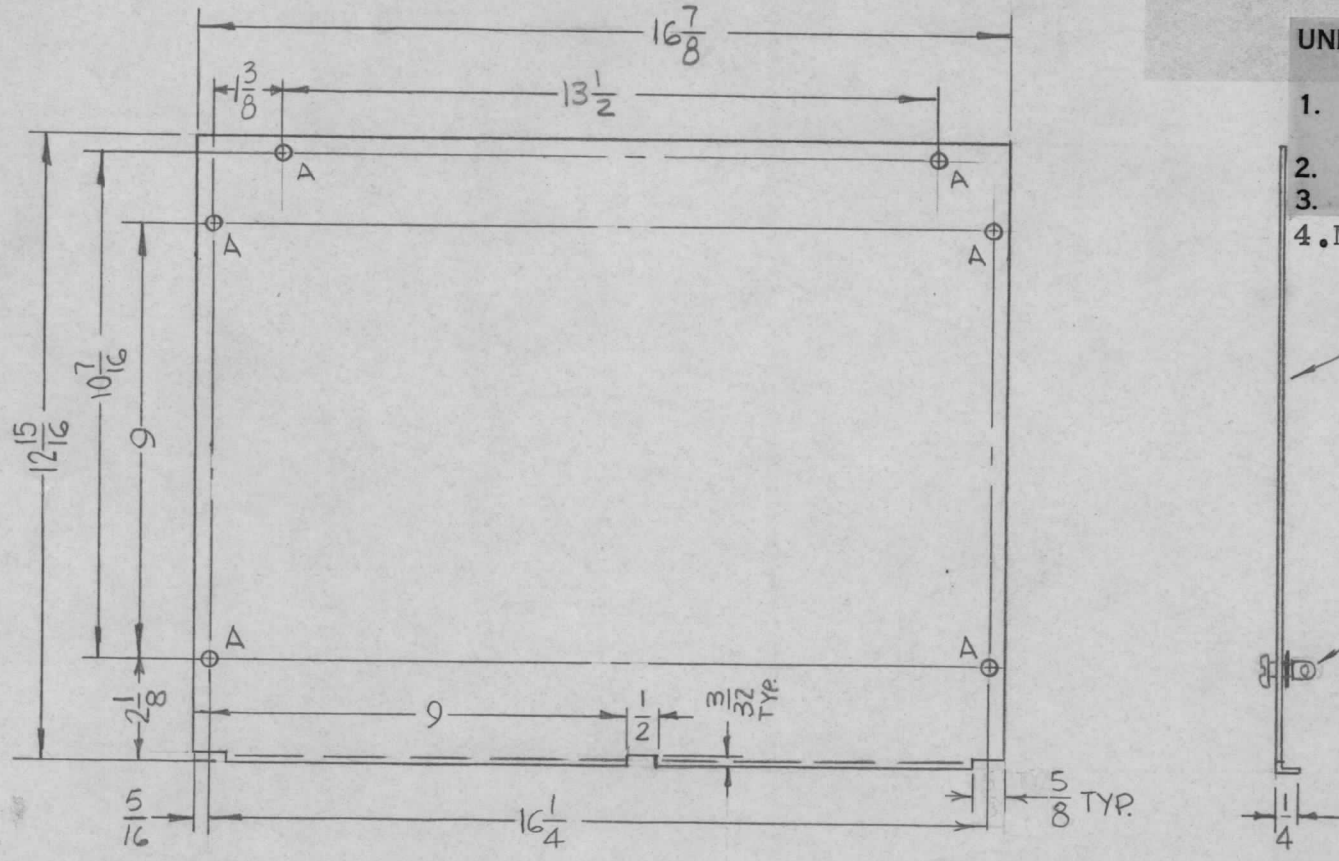


MARK TMC PART NO. 1/8 HIGH
 GOTHIC W/LATEST REVISION
 LETTER.

ISSUE	ITEM	CHANGED FROM	DATE	CH. NO.	DRAFTS	CHECKER	ENG. APP.	REQ. ITEM	PART NO.	BUDETTI	DESCRIPTION	SYMBOL	
	Ø	ORIGINAL RELEASE FOR PRODUCTION	11/18/66	Ø	CV			.062 THICK STOCK SIZE		THE TECHNICAL MATERIEL CORP. MAMARONECK, NEW YORK			
X		EXPERIMENTAL RELEASE	6-16-66	-M	Jc	QCB		ALUMINUM MATERIAL		SHIM			
TOLERANCES			SCALE: FULL SIZE					5052-H32		E. LAWSON	QCB	MS4994 Ø	
DEC. DIM. ± FRAC. DIM. ± ANGULAR DIM. ±			MAXIMUM ALLOWABLE TOLERANCES HAVE BEEN DETERMINED AND ANY DEVIATIONS WILL BE CAUSE FOR REJECTION. REMOVE ALL BURRS AND SHARP EDGES					5404 IRIDITE FINISH & SPEC. NO.		QCB	MS	MS4994 Ø	

REQ. PER UNIT	USED ON		
	MODEL	ASS'Y. NO.	DATE
1	TCP-1	/	4-22-66
1	TCP-2	A5253	6-17-66
1	TCP-3	BMA132	7-21-66

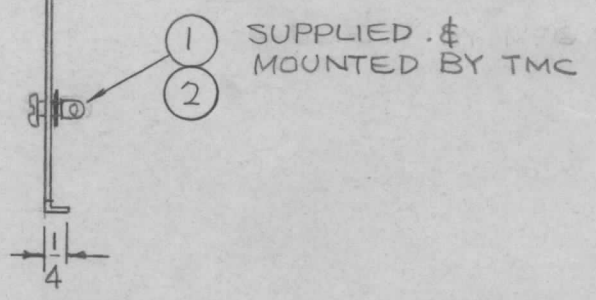
MS4998 A



- UNLESS OTHERWISE SPECIFIED:
1. USE MATERIAL THICKNESS FOR MAXIMUM RADIUS ON ALL BENDS
 2. ALL ANGULAR BENDS 90 DEGREES
 3. REMOVE ALL BURRS AND SHARP EDGES
 4. MOUNT ITEMS 1&2 AFTER FINISHING

MARK TMC P/N (MS4998)
1/8" HIGH GOTHIC W/LATEST REV. LETTER.

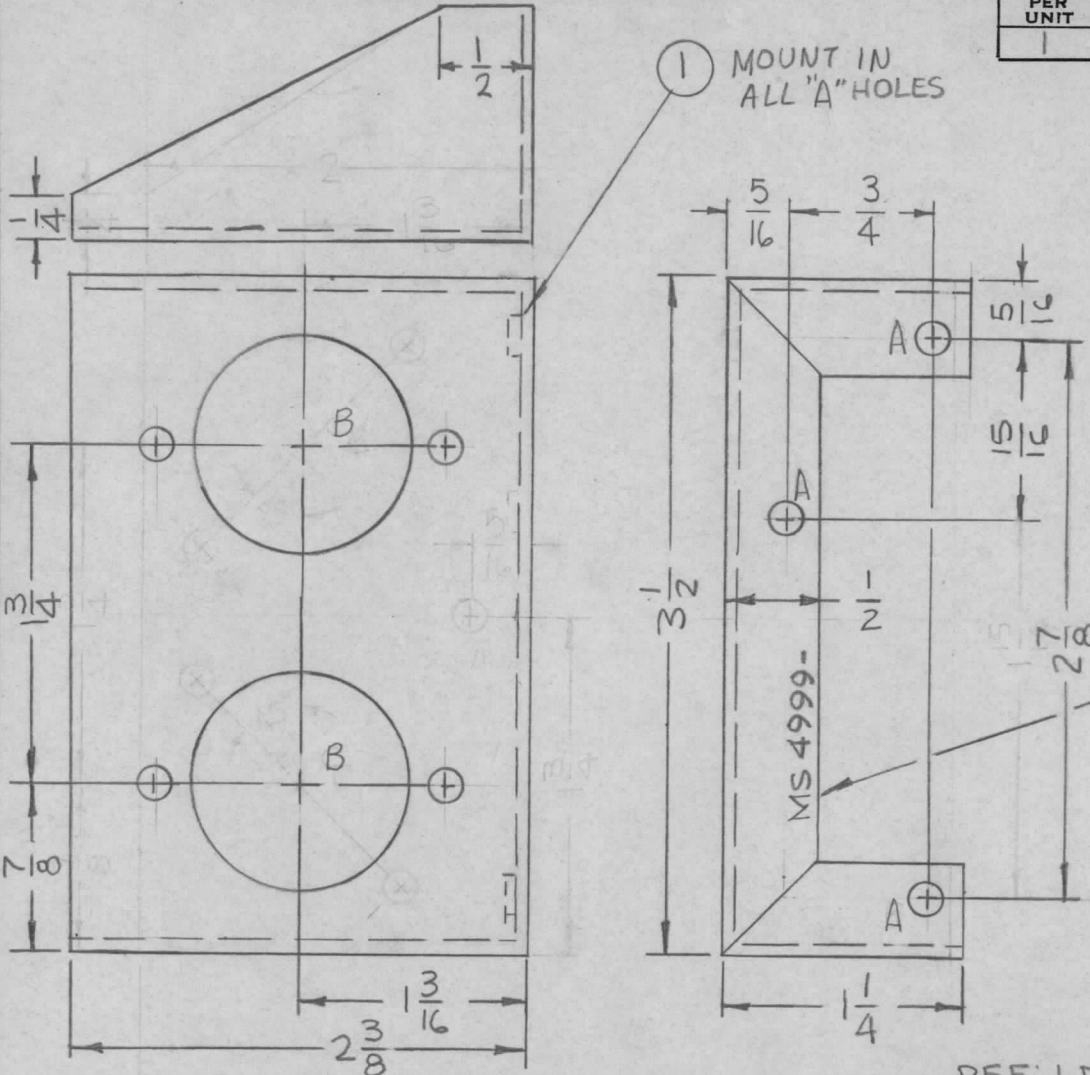
HOLES: REQ.
A-1/4" DIA. 6



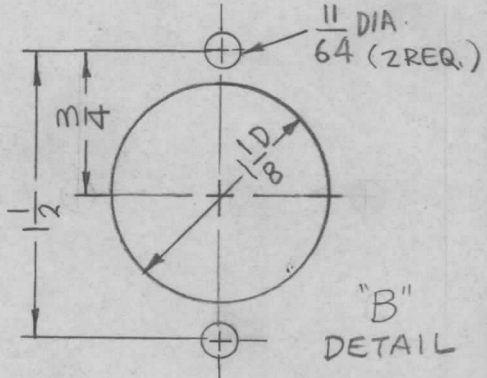
6	2	FS 110-1	STUD, TURNLOCK	A	
6	1	FS 109-3	RING, RETAINING	A	
REQ. ITEM	PART NO.		F. BUDETTI DESCRIPTION	SYMBOL	
.064 THICK			THE TECHNICAL MATERIEL CORP. MAMARONECK, NEW YORK		
STOCK SIZE					
ALUMINUM			COVER, TOP		
MATERIAL					
5052-H32					
TYPE & TEMPER		HEAT TREAT. SPEC.	DRAWN	CHECKED	FINAL APPROVAL
S404 YEL. IRIDITE			de	OCB	OCB
FINISH & SPEC. NO.			ELEC. DES. APP.	MECH. DES. APP.	MS4998 A

SYM	DESCRIPTION	DATE	CH. NO.	DRAFTS	CHECKER	ENG. APP.
A	HOLES UPDATED & NOTES REV.	5-3-67	18163	L.A.K.		FB
Ø	ORIGINAL RELEASE FOR PRODUCTION	12-13-66		WFO		
X ₁	CUTOUT ADDED, TCP-3 ADDED	7-21-66	X ₁			
X	EXP. RELEASE	6-17-66	X			
UNLESS OTHERWISE SPECIFIED DIMENSIONS ARE IN INCHES AND INCLUDE CHEMICALLY APPLIED OR PLATED FINISHES		SCALE 1/4				
DECIMALS .X ± .05 .XX ± .01 .XXX ± .005		FRACTIONS ± 1/64 ANGLES ± 0° 30'		CODE A		

REQ. PER UNIT	USED ON			MS4999	Q
	MODEL	ASS'Y. NO.	DATE		
1	TCP-2		6-16-66		



HOLES	DESCRIPTION	REQ.
A	.191-.194 DIA.	3
B	SEE DETAIL	2



MARK TMC P/N
1/8" HIGH GOTHIC
W/LATEST
REV. LETTER.

- UNLESS OTHERWISE SPECIFIED:
1. USE MATERIAL THICKNESS FOR MAXIMUM RADIUS ON ALL BENDS
 2. ALL ANGULAR BENDS 90 DEGREES
 3. REMOVE ALL BURRS AND SHARP EDGES
 4. MOUNT INSERTS AFTER FINISHING

REF: LD 2105-

Q	ORIGINAL RELEASE FOR PRODUCTION	12-1-66	4	WHD			3	1	NT/29-632-4	NUT, PLAIN, SPLINE	A			
X3	ONE 11/64 HOLE DELETED	11-29-66	X3	JBC			REQ. ITEM	PART NO.	F. BUDETTI	DESCRIPTION	SYMBOL			
X2	ADDED 1/2 DIM	8-29-66	X2	JBC			.081		THE TECHNICAL MATERIEL CORP. MAMARONECK, NEW YORK					
X1	2-3/8 WAS 2 1/4, "C" RE-LOCATED	8-2-66	X1	JBC			ALUMINUM		BRACKET, MTG. RELAY					
X	EXP. RELEASE	6-16-66	X	JBC			MATERIAL							
SYM	DESCRIPTION	DATE	CH. NO.	DRAFTS	CHECKER	ENG. APP.	5052-H32		DRAWN	CHECKED	FINAL APPROVAL			
UNLESS OTHERWISE SPECIFIED DIMENSIONS ARE IN INCHES AND INCLUDE CHEMICALLY APPLIED OR PLATED FINISHES						SCALE	1:1							
DECIMALS .X ± .05 .XX ± .01 .XXX ± .005						TOLERANCES		FRACTIONS ± 1/64 ANGLES ± 0° 30'		CODE	A			
							S404 YEL. IRIDITE		FINISH & SPEC. NO.		ELEC. DES. APP.	MECH. DES. APP.	MS4999	Q