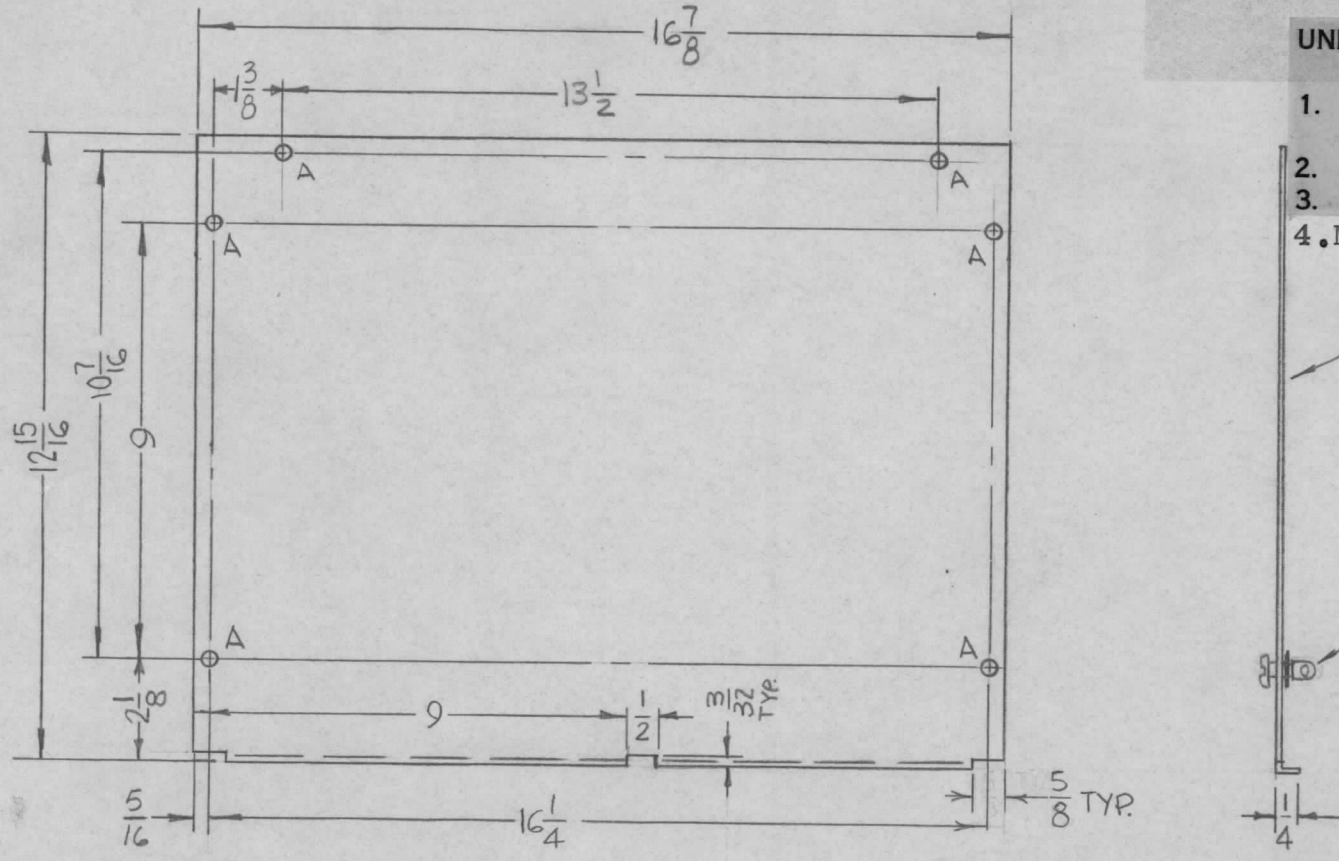


REQ. PER UNIT	USED ON		
	MODEL	ASS'Y. NO.	DATE
1	TCP-1	/	4-22-66
1	TCP-2	A5253	6-17-66
1	TCP-3	BMA132	7-21-66

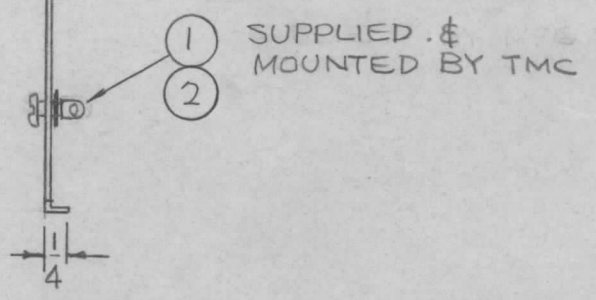
MS4998 A



- UNLESS OTHERWISE SPECIFIED:
1. USE MATERIAL THICKNESS FOR MAXIMUM RADIUS ON ALL BENDS
 2. ALL ANGULAR BENDS 90 DEGREES
 3. REMOVE ALL BURRS AND SHARP EDGES
 4. MOUNT ITEMS 1&2 AFTER FINISHING

MARK TMC P/N (MS4998)
1/8" HIGH GOTHIC W/LATEST REV. LETTER.

HOLES: REQ.
A-1/4" DIA. 6



6	2	FS 110-1	STUD, TURNLOCK	A	
6	1	FS 109-3	RING, RETAINING	A	
REQ. ITEM	PART NO.		F. BUDETTI DESCRIPTION	SYMBOL	
.064 THICK			THE TECHNICAL MATERIEL CORP. MAMARONECK, NEW YORK		
STOCK SIZE					
ALUMINUM			COVER, TOP		
MATERIAL					
5052-H32					
TYPE & TEMPER		HEAT TREAT. SPEC.	DRAWN	CHECKED	FINAL APPROVAL
S404 YEL. IRIDITE			de	OCB	OCB
FINISH & SPEC. NO.			ELEC. DES. APP.	MECH. DES. APP.	
					MS4998 A

SYM	DESCRIPTION	DATE	CH. NO.	DRAFTS	CHECKER	ENG. APP.
A	HOLES UPDATED & NOTES REV.	5-3-67	18163	L.A.K.		FB
Ø	ORIGINAL RELEASE FOR PRODUCTION	12-13-66		WFO		
X ₁	CUTOUT ADDED, TCP-3 ADDED	7-21-66	X ₁			
X	EXP. RELEASE	6-17-66	X			
UNLESS OTHERWISE SPECIFIED DIMENSIONS ARE IN INCHES AND INCLUDE CHEMICALLY APPLIED OR PLATED FINISHES		SCALE 1/4				
DECIMALS .X ± .05 .XX ± .01 .XXX ± .005		FRACTIONS ± 1/64 ANGLES ± 0° 30'		CODE A		
TOLERANCES						