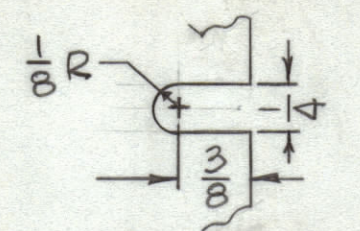
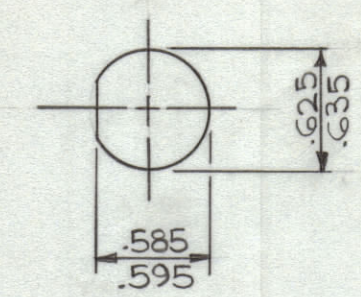


| REVISIONS | | | | | | | |
|-----------|-----|---------------------------------|---------|------------|-------|------|------|
| ZONE | SYM | DESCRIPTION | DATE | E.M.N. NO. | DRAFT | CHKD | APPD |
| | X1 | REDRAWN W/CHANGES | 7-26-66 | | HCA | | |
| | Ø | ORIGINAL RELEASE FOR PRODUCTION | 9-9-66 | | Jc | | |

| HOLE | DESCRIPTION | REQ'D. |
|------|--|--------|
| A | .196 DIA. $\frac{1}{4}$ " C SK. 82° TO .390 DIA (ON REAR OF PANEL) | 4 |
| B | 13/64 DIA. | 7 |
| C | SEE DETAIL "C" | 4 |
| D | 15/32 DIA. | 3 |
| E | SEE DETAIL "E" | 4 |
| F | NO. 48 DR (Ø76) | 2 |

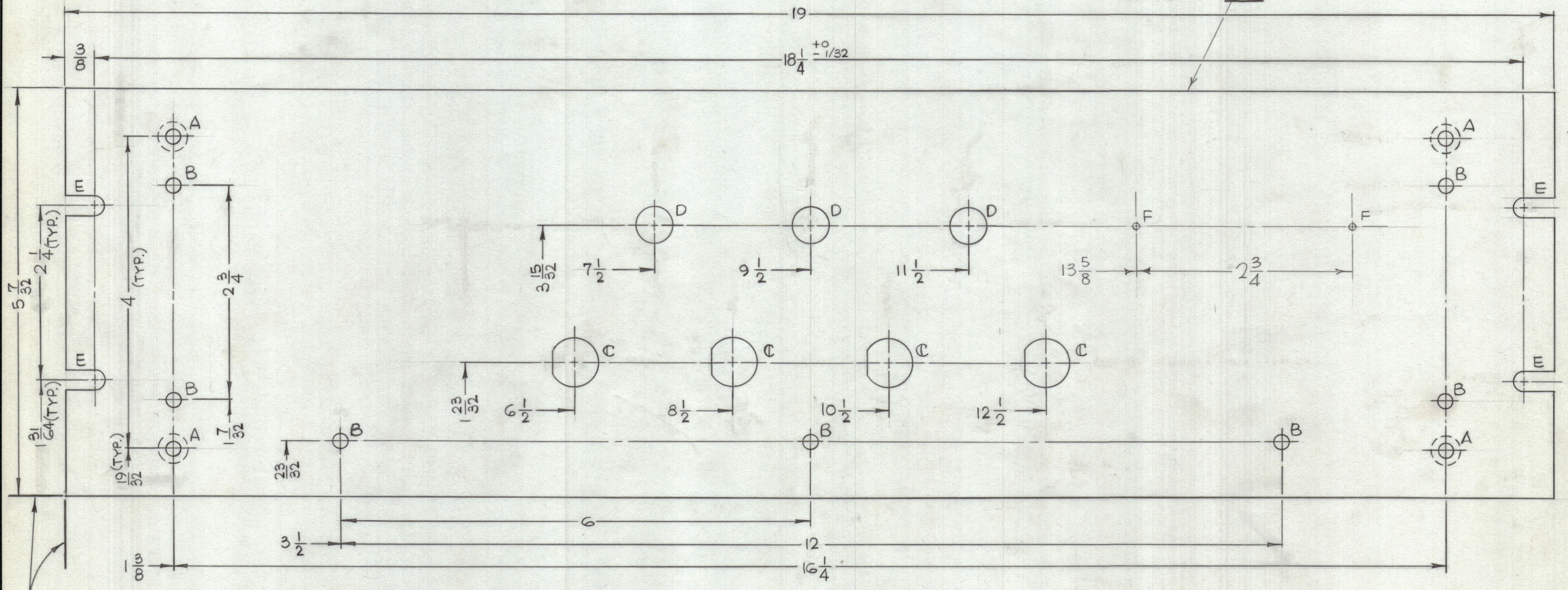


DETAIL "E"
(4 REQ'D.)



DETAIL "C"
(4 REQ'D.)

MARK TMC PART NO. 1/8 HIGH
GOTHIC W/LATEST REVISION
LETTER ON REAR OF PANEL.



FRONT VIEW SHOWN

LOCATING
BASE LINES

FINISH NOTES:
 1. S404 - IRIDITE 14-2 AL-COAT.
 2. S114 - ZINC CHROMATE PRIMER } FRONT AND
 3. S115 - SMOOTH GRAY ENAMEL } EDGES ONLY
 OR PRIME & PAINT TO CUSTOMER SPEC.

MACHINING:
 1. MILL ALL EDGES.
 2. HOLES MUST BE DRILLED, UNLESS OTHERWISE SPECIFIED.
 3. LATERAL BOW OF PANEL MUST BE KEPT TO .031 TOLERANCE.
 4. PANEL MUST BE FREE OF ALL MACHINING MARKS, GOUGES
 AND SCRATCHES. IF NECESSARY, SAND FRONT OF PANEL
 WITH NO. 120 GRIT SANDPAPER.

REF: LD2070

| REQ'D. | ITEM | PART NUMBER | DESCRIPTION | SYMBOL |
|---|--------------------------|-------------|--|----------------------------|
| EATON LIST OF MATERIAL | | | | |
| MATERIAL | 3/16 ALUMINUM 2024-T3 | | THE TECHNICAL MATERIEL CORP. MAMARONECK, NEW YORK | |
| FINISH | SEE NOTES | | TITLE PANEL, FRONT | |
| UNLESS OTHERWISE SPECIFIED DIMENSIONS ARE IN INCHES AND INCLUDE CHEMICALLY APPLIED OR PLATED FINISHES | | | DRAWN H. AUSTIN | DATE 7/26-66 |
| DECIMALS .X ± .05 .XX ± .01 .XXX ± .005 | | | DATE 9/9/66 | FINAL APPROVAL M. P. B. |
| FRACTIONS ± 1/64 ANGLES ± 0° 30' | | | DATE 9/9/66 | DATE 9/9/66 |
| TOLERANCES | | | MECH. DES. M. P. B. | DATE 9/9/66 |
| THE CONTENTS OF THIS DRAWING ARE THE EXCLUSIVE PROPERTY OF THE TECHNICAL MATERIEL CORP. ITS UNAUTHORIZED USE OR REPRODUCTION IN WHOLE OR IN PART IS STRICTLY FORBIDDEN. | | | DATE 9/9/66 | DATE 9/9/66 |
| NOTES | | | DATE 9/9/66 | DATE 9/9/66 |

MS4991
Ø