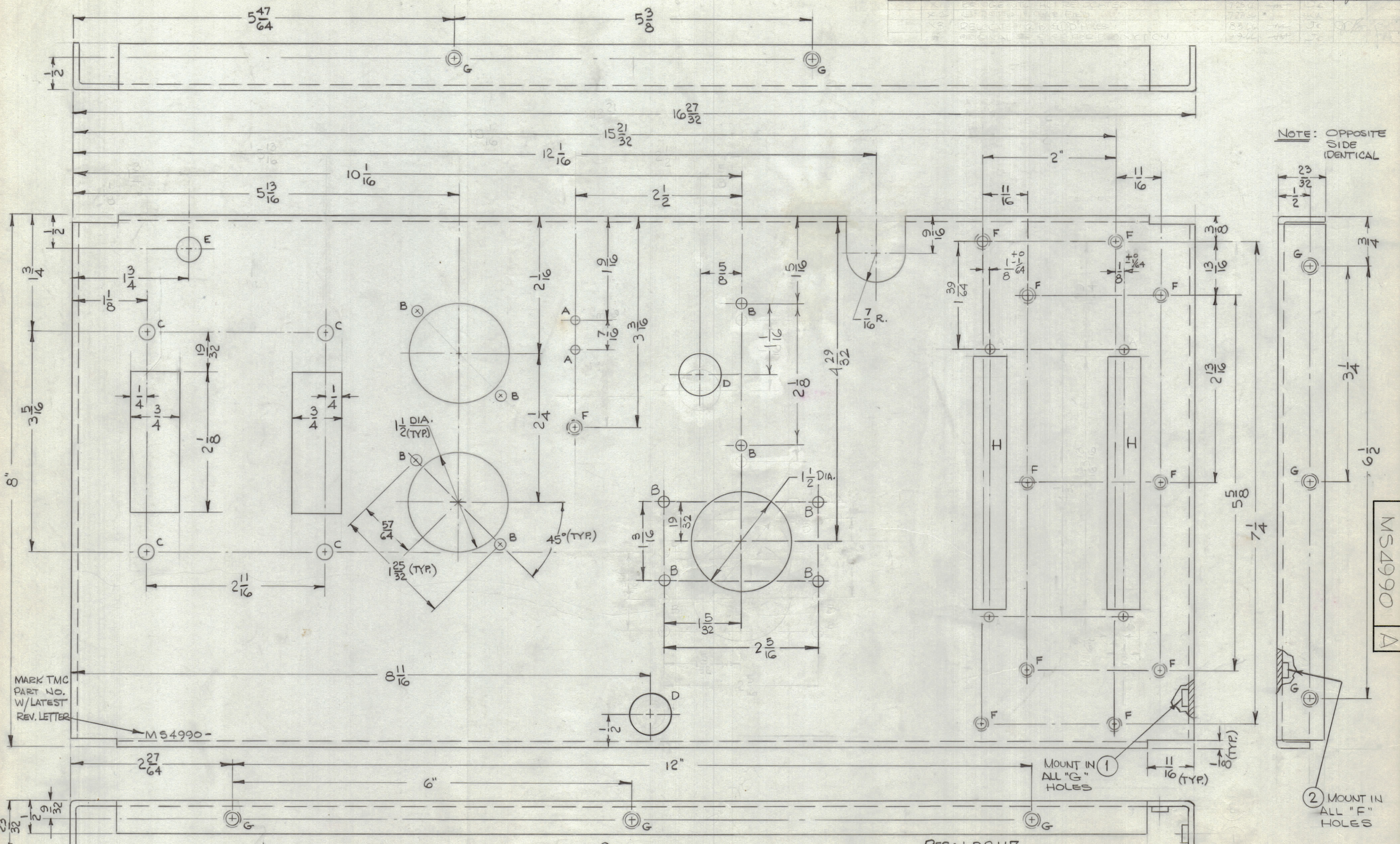


REVISIONS							
ZONE	SYM	DESCRIPTION	DATE	E.M.N. NO.	DRAFT	CHKD	APPD
EI	A	BASE FOR 5-5/8 DIM RELOC	9.30.66	16943	WHD	JL	APPD
		REVISIONS					
		REVISIONS					
		REVISIONS					



NOTE: OPPOSITE SIDE IDENTICAL

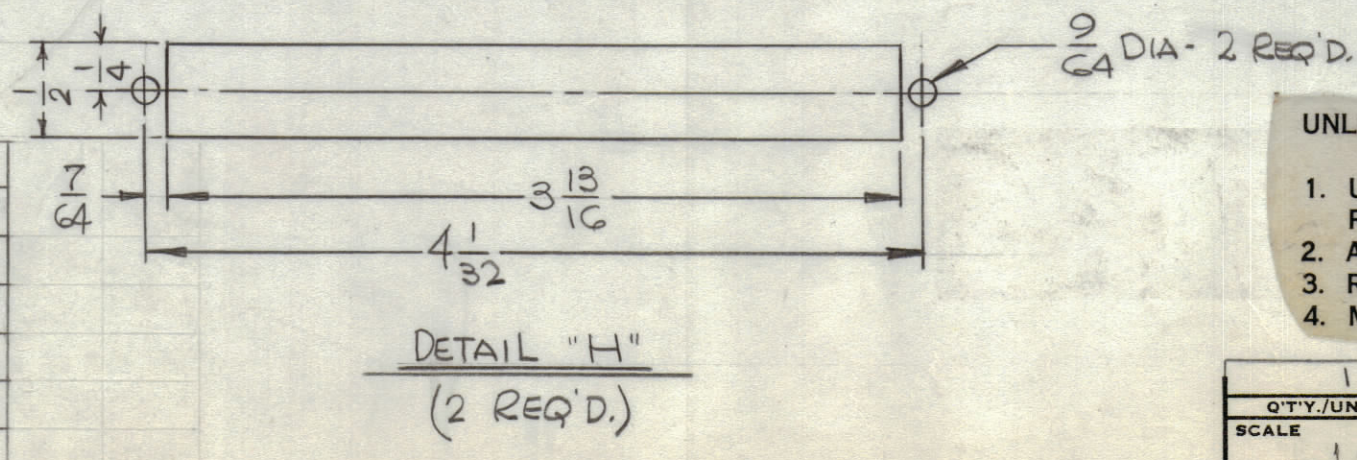
MARK TMC PART NO. W/LATEST REV. LETTER

MS4990-

MOUNT IN ALL "G" HOLES

MOUNT IN ALL "F" HOLES

HOLE	DIAMETER	REQ.
A	9/64	2
B	11/64	10
C	15/64	4
D	5/8	2
E	3/8	1
F	.191-.194	11
G	.221-.224	11
H	SEE DETAIL	2



- UNLESS OTHERWISE SPECIFIED:
1. USE MATERIAL THICKNESS FOR MAXIMUM RADIUS ON ALL BENDS
 2. ALL ANGULAR BENDS 90 DEGREES
 3. REMOVE ALL BURRS AND SHARP EDGES
 4. MOUNT INSERTS AFTER FINISHING

REF: LD2117

REQ'D.	ITEM	PART NUMBER	DESCRIPTION	SYMBOL
11	2	NT-129-G32-4	NUT, SWAGE	F
11	1	NT-129-B32-4	NUT, SWAGE	G

EATON		LIST OF MATERIAL SK-3232-2	
MATERIAL	.081 THICK ALUMINUM, 5052-H32	THE TECHNICAL MATERIEL CORP. MAMARONECK, NEW YORK	
FINISH	3404 YELLOW IRIDITE	TITLE CHASSIS, MAIN	

QTY./UNIT	LRCA-1	MODEL USED ON	ASSY. NO.
SCALE	1:1	CODE	

THE CONTENTS OF THIS DRAWING ARE THE EXCLUSIVE PROPERTY OF THE TECHNICAL MATERIEL CORP. ITS UNAUTHORIZED USE OR REPRODUCTION IN WHOLE OR IN PART IS STRICTLY FORBIDDEN.

UNLESS OTHERWISE SPECIFIED	DECIMALS	FRACTIONS	TOLERANCES
DIMENSIONS ARE IN INCHES AND INCLUDE CHEMICALLY APPLIED OR PLATED FINISHES	.XX ± .05 .XXX ± .005	± 1/64 ANGLES ± 0° 30'	

DRAWN	DATE	FINAL APPROVAL	DATE
WHD	6-13-66	JL	9/9/66
CHECKED			
ELECT. DES.			
MECH. DES.			

NOTES