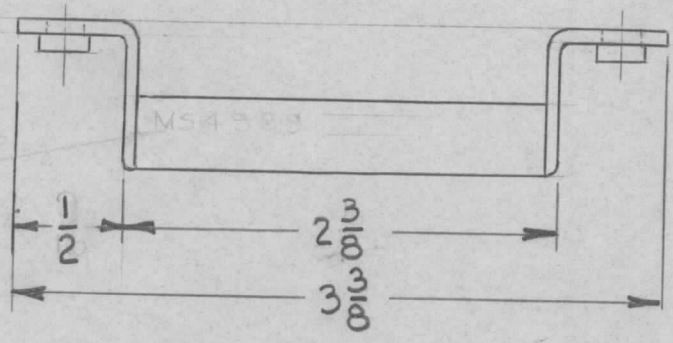


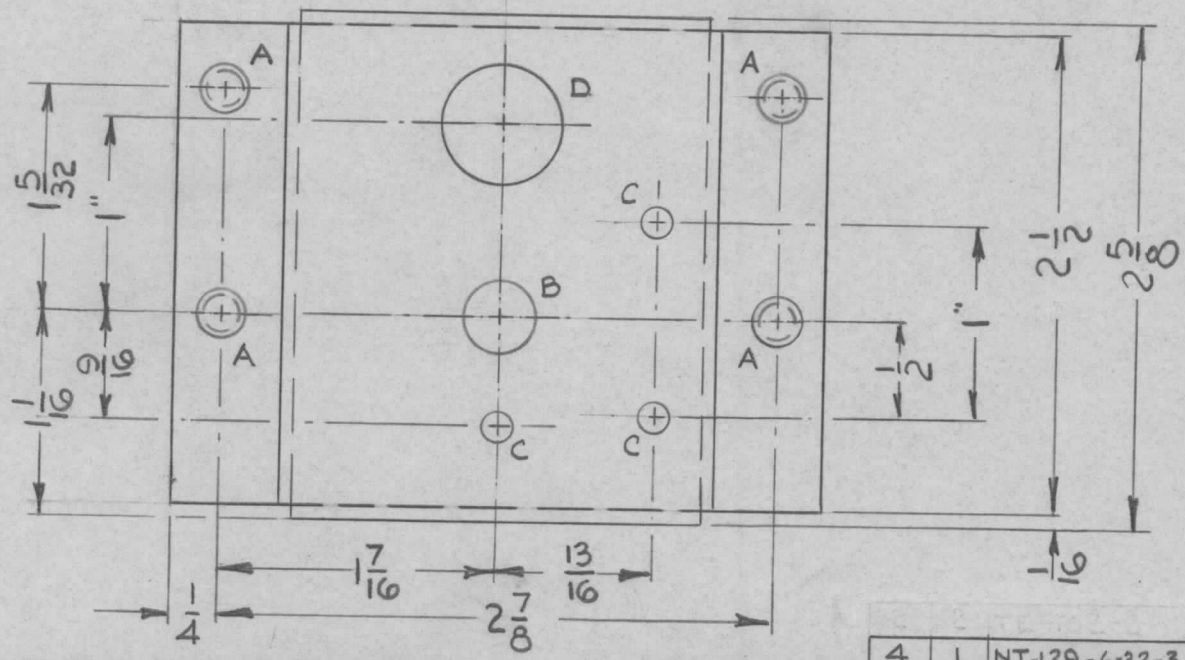
REQ. PER UNIT	USED ON		
	MODEL	ASS'Y. NO.	DATE
1	LSCA-1		

MS4989  $\emptyset$

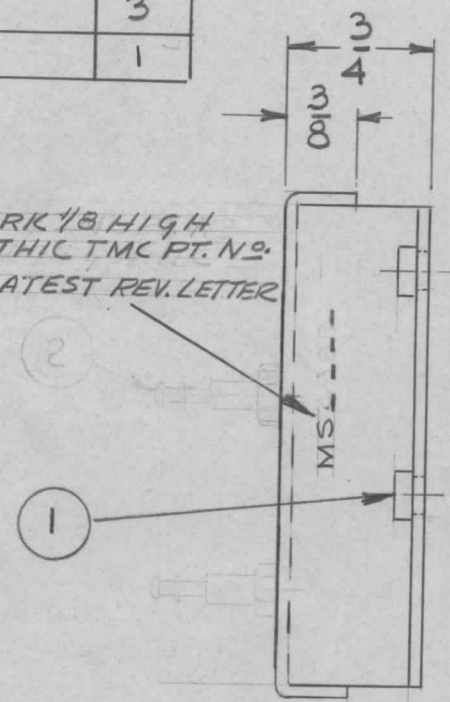


HOLE	DIAMETER	REQ.
A	.191 -.194	4
B	3/8	1
C	5/32	3
D	5/8	1

METAL STAMP  
M&E TMC CO  
12-13-66  
3341C W/64  
REV. LETTER



MARK 1/8 HIGH  
GOTHIC TMC PT. NO.  
W/LATEST REV. LETTER



REF. LD 2114

$\emptyset$	ORIGINAL RELEASE FOR PRODUCTION	9.12.66	#	WFO	JL	JL
X <sub>1</sub>	REMOVED ITEM 2 WAS 7E102-2	7/27/66		JL		
X	EXPERIMENTAL RELEASE	6-12-66		B		
SYM	DESCRIPTION	DATE	CH. NO.	DRAFTS	CHECKER	ENG. APP.
UNLESS OTHERWISE SPECIFIED DIMENSIONS ARE IN INCHES AND INCLUDE CHEMICALLY APPLIED OR PLATED FINISHES		SCALE FULL				
DECIMALS .X $\pm$ .05 .XX $\pm$ .01 .XXX $\pm$ .005	FRACTIONS $\pm$ 1/64 ANGLES $\pm$ 0° 30'	CODE SK-3233-1				

4	1	NT-129-6-32-3	NUT, SWAGE	
REQ. ITEM	PART NO.		EATON	DESCRIPTION
	.064 THK.		THE TECHNICAL MATERIEL CORP.	
	STOCK SIZE		MAMARONECK. NEW YORK	
	ALUMINUM		BRACKET, LEDEX SWITCH	
	MATERIAL			
	5052-H32		6-12-66	
	TYPE & TEMPER	HEAT TREAT. SPEC.	DRAWN	CHECKED
	YELLOW IRIDITE		B Barnes	9/9/66
	FINISH & SPEC. NO.	ELEC. DES. APP.	MECH. DES. APP.	FINAL APPROVAL
				MS 4989 $\emptyset$