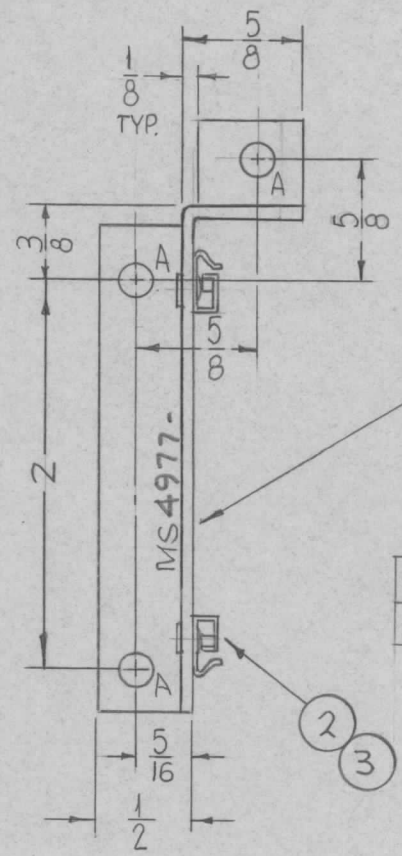
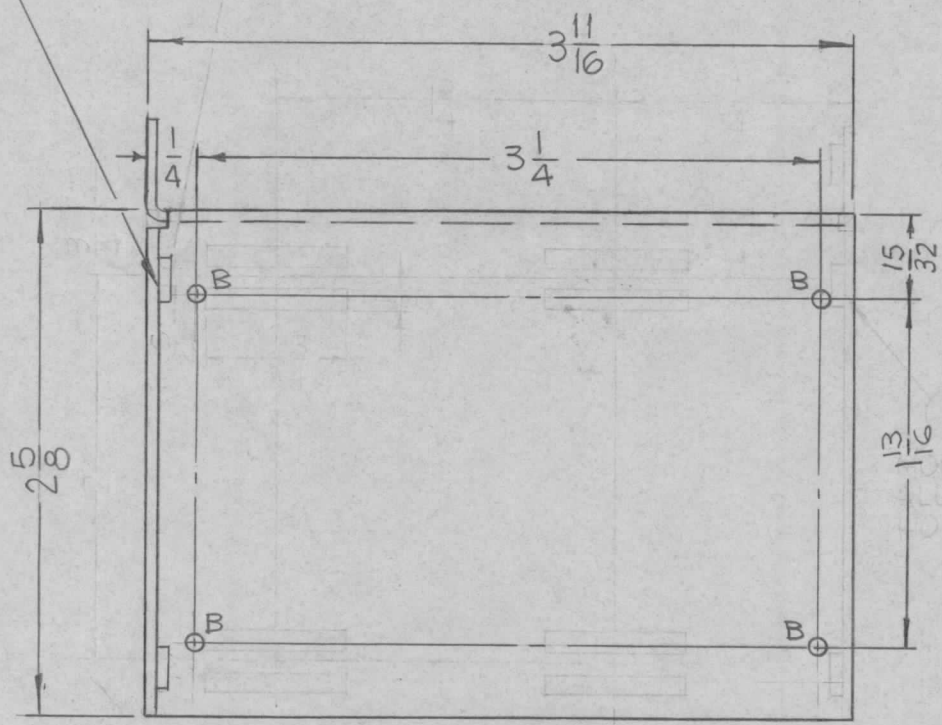


REQ. PER UNIT	USED ON		MS4977 ϕ
	MODEL	ASS'Y. NO.	
			5-17-66

1 MOUNT IN ALL "A" HOLES



HOLES:
 A - .191-.194 DIA. (3 REQ.)
 B - 5/64 DIA. (4 REQ.)

MARK TMC P/N
 1/8" HIGH GOTHIC
 W/LATEST REV.
 LETTER.

MS4977-1	AS SHOWN	LEFT
MS4977-2	OPP. HAND	RIGHT

UNLESS OTHERWISE SPECIFIED:

1. USE MATERIAL THICKNESS FOR MAXIMUM RADIUS ON ALL BENDS
2. ALL ANGULAR BENDS 90 DEGREES
3. REMOVE ALL BURRS AND SHARP EDGES
4. MOUNT ITEMS 1,2,3 AFTER FINISHING

4	3	EY100-5	EYELET, FLAT FLANGE	B
1	2	CU157-4	RETAINER, PC BOARD	B
3	1	NT129-632-4	NUT, PLAIN, SPLINE	A

ϕ	ORIGINAL RELEASE EQE PRODUCTION	11-22-66	ϕ	RME		
X ₁	CHART ADDED	6-24-66	X ₁			
X	EXP. RELEASE	6-10-66	X			Qa
SYM	DESCRIPTION	DATE	CH. NO.	DRAFTS	CHECKER	ENG. APP.
UNLESS OTHERWISE SPECIFIED DIMENSIONS ARE IN INCHES AND INCLUDE CHEMICALLY APPLIED OR PLATED FINISHES		SCALE 1:1				
DECIMALS .X \pm .05 .XX \pm .01 .XXX \pm .005	TOLERANCES	FRACTIONS \pm 1/64 ANGLES \pm 0° 30'	CODE A			

REQ. ITEM	PART NO.	F. BUDETTI	DESCRIPTION	SYMBOL
	.064	THE TECHNICAL MATERIEL CORP. MAMARONECK, NEW YORK		
	ALUMINUM	BRACKET, MTG. PC BOARD		
	5052-H32			
	S404 YEL. IRIDITE			
	FINISH & SPEC. NO.	ELEC. DES. APP.	MECH. DES. APP.	MS4977 ϕ