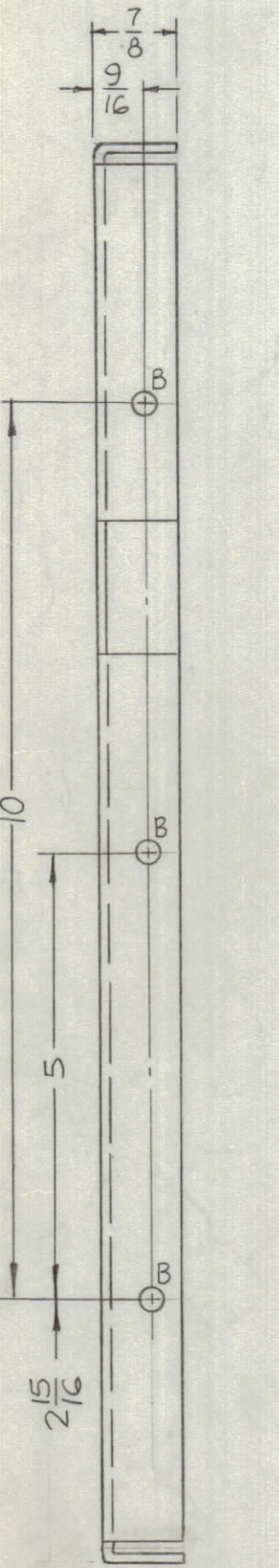
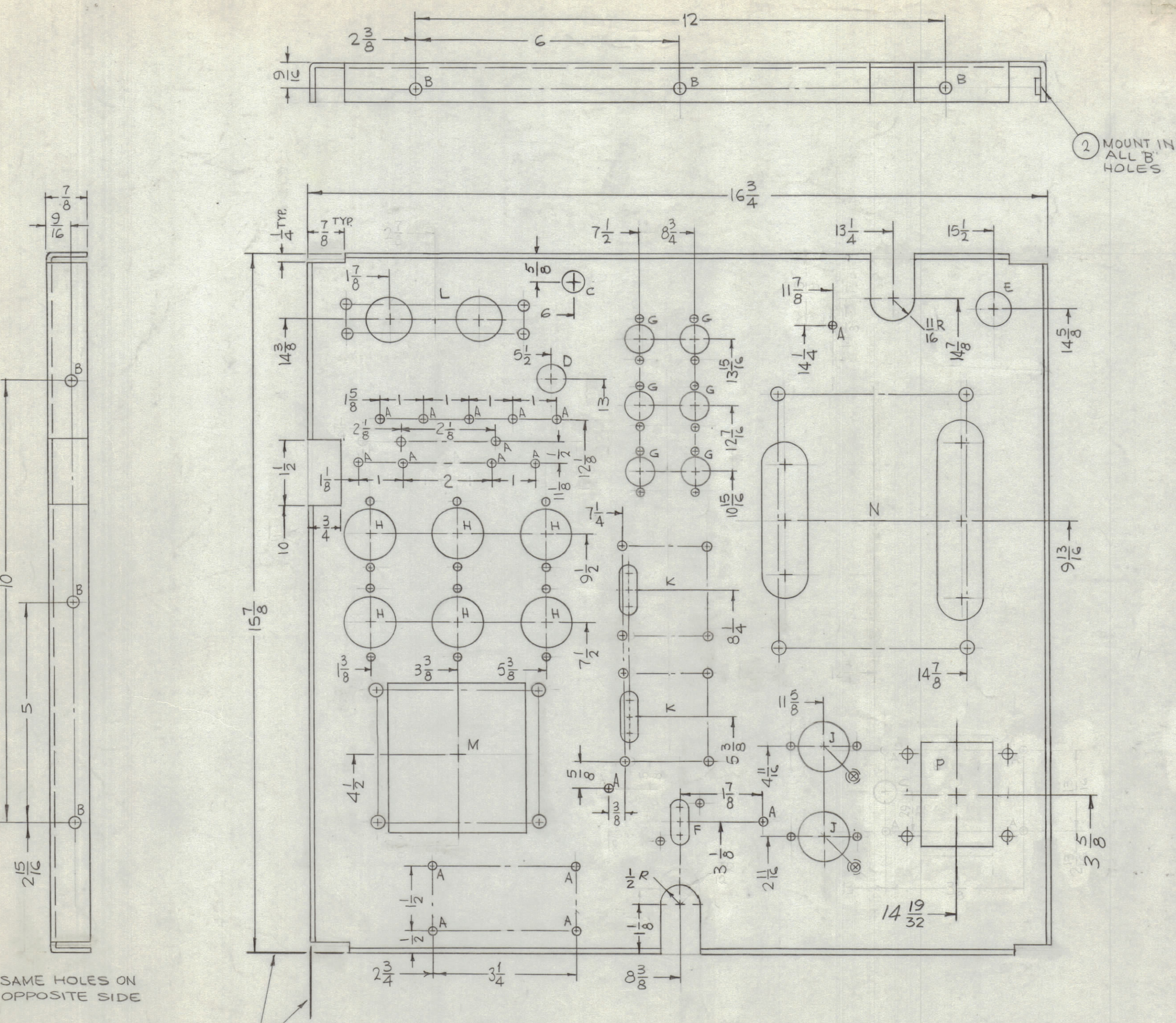


SYM	DESCRIPTION	DATE	E.M.N. NO.	DRAFT	CHKD	APPD
X	EXPERIMENTAL RELEASE	6-2-66	X			
0	ORIGINAL RELEASE FOR PRODUCTION	11-11-66		WFO		
A	DELE. 1" DIA. HOLE & 2" DIA. HOLES REL. TO ...	12-22-67	18684	M.P.		FB
B	(COMPLETELY REV.)	3/11/68	18803			FB



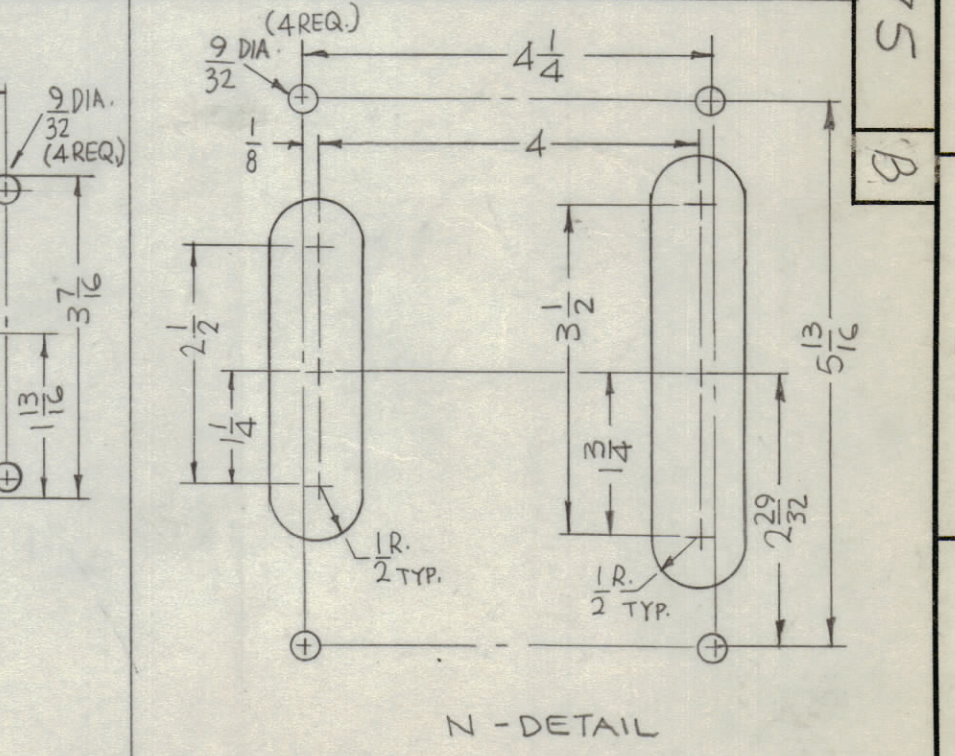
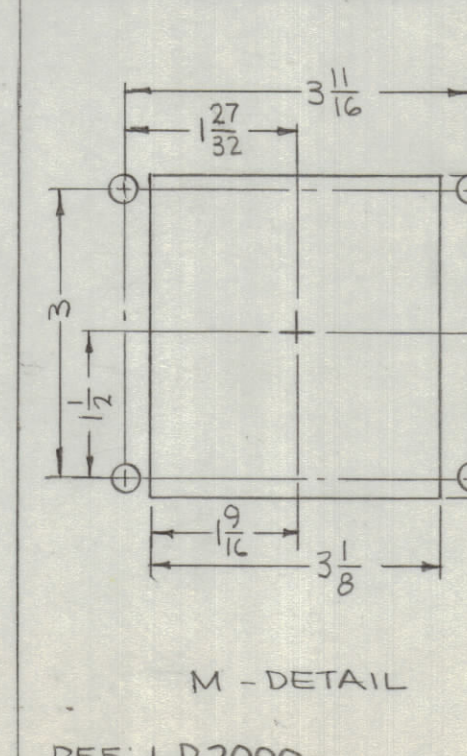
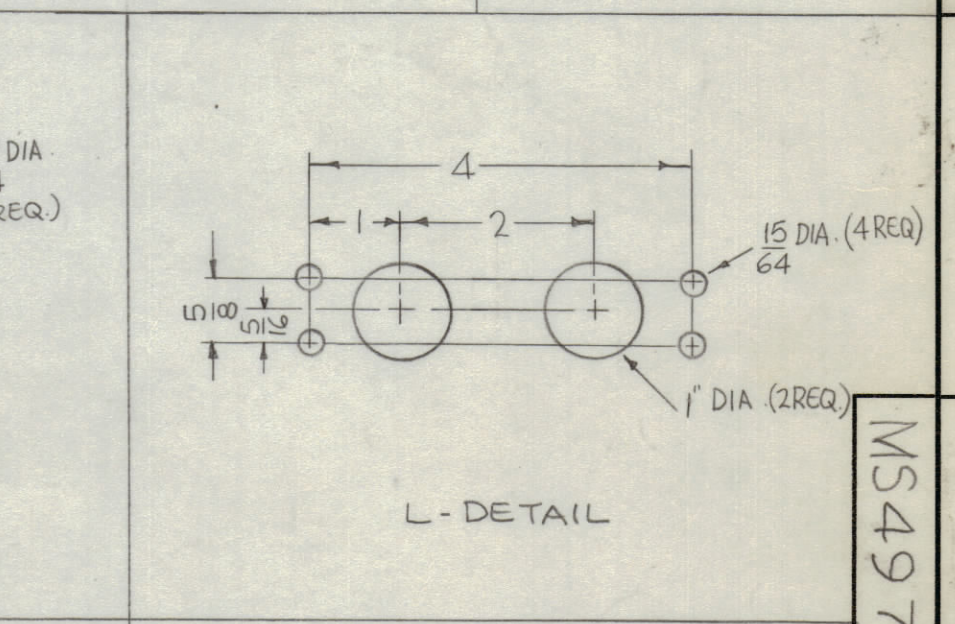
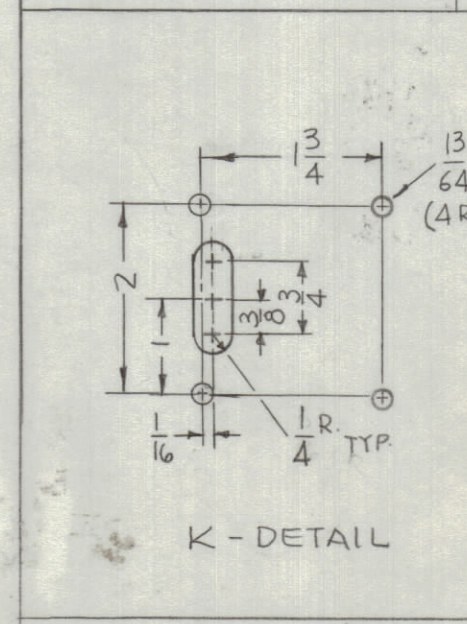
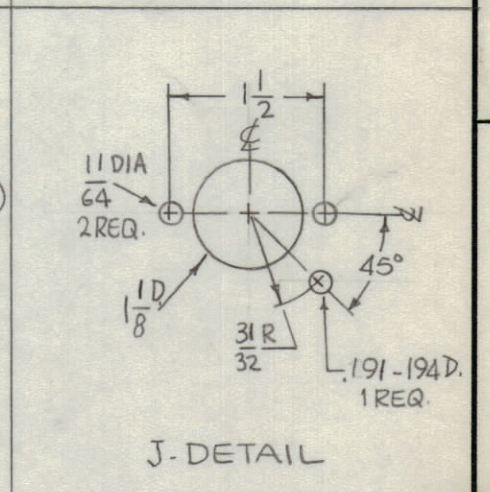
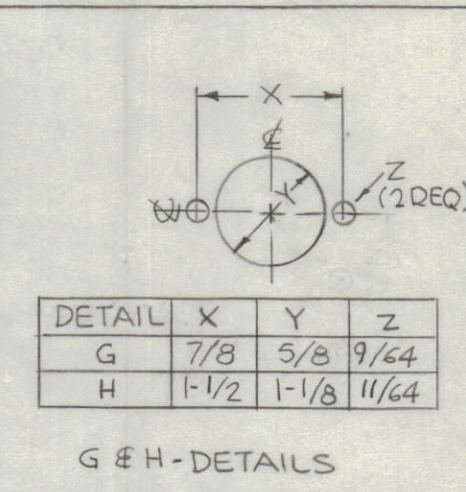
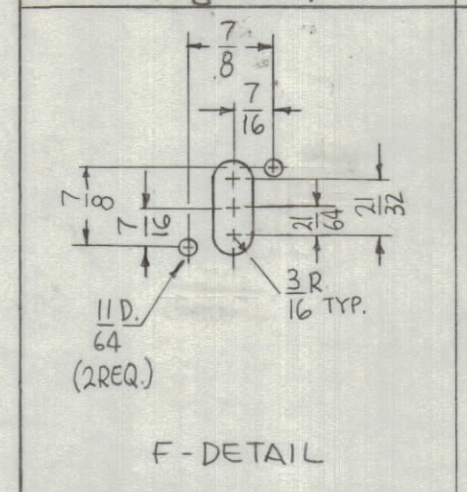
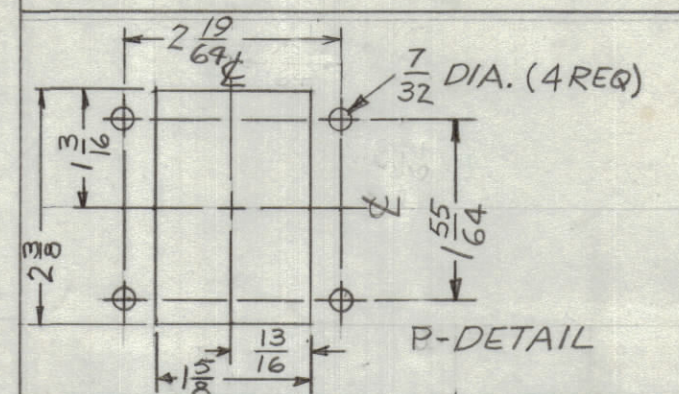
HOLES	DESCRIPTION	REQ
A	11/64 DIA.	18
B	.250-253	13
C	1/2 DIA.	1
D	5/8 DIA.	1
E	3/4 DIA.	1
F	SEE DETAIL	1
G		6
H		6
J		2
K		2
L		1
M		1
N	SEE DETAIL	1
P	SEE DETAIL	1

UNLESS OTHERWISE SPECIFIED:
1. USE MATERIAL THICKNESS FOR MAXIMUM RADIUS ON ALL BENDS
2. ALL ANGULAR BENDS 90 DEGREES
3. REMOVE ALL BURRS AND SHARP EDGES
4. MOUNT INSERTS AFTER FINISHING

NOTES

1	AP-128-A	A525G
QTY./UNIT	MODEL USED ON	ASS'Y. NO.
SCALE 1/2:1	CODE A	

THE CONTENTS OF THIS DRAWING ARE THE EXCLUSIVE PROPERTY OF THE TECHNICAL MATERIEL CORP. ITS UNAUTHORIZED USE OR REPRODUCTION IN WHOLE OR IN PART IS STRICTLY FORBIDDEN.



REF. LD 2099-

REQ'D	ITEM	PART NUMBER	DESCRIPTION	SYMBOL
13	2	NT129-1032-G	NUT, PLAIN, SPLINE	B
2	1	NT129-632-C	NUT, PLAIN, SPLINE	J

LIST OF MATERIAL
F. BUDETTI

MATERIAL	1/8 THICK ALUMINUM 5052-H32		
FINISH	S404 YEL. IRIDITE		
TITLE	CHASSIS, MAIN (L.V. SUPPLY)		
DRAWN	DATE	FINAL APPROVAL	DATE

UNLESS OTHERWISE SPECIFIED DIMENSIONS ARE IN INCHES AND INCLUDE CHEMICALLY APPLIED OR PLATED FINISHES	DRAWN	DATE	FINAL APPROVAL	DATE
DECIMALS .X ± .05 .XX ± .01 .XXX ± .005	CHECKED	DATE		
FRACTIONS ± 1/64 ANGLES ± 0° 30'	ELECT. DES.	DATE	MS4975	B
	MECH. DES.	DATE		

MS4975 B