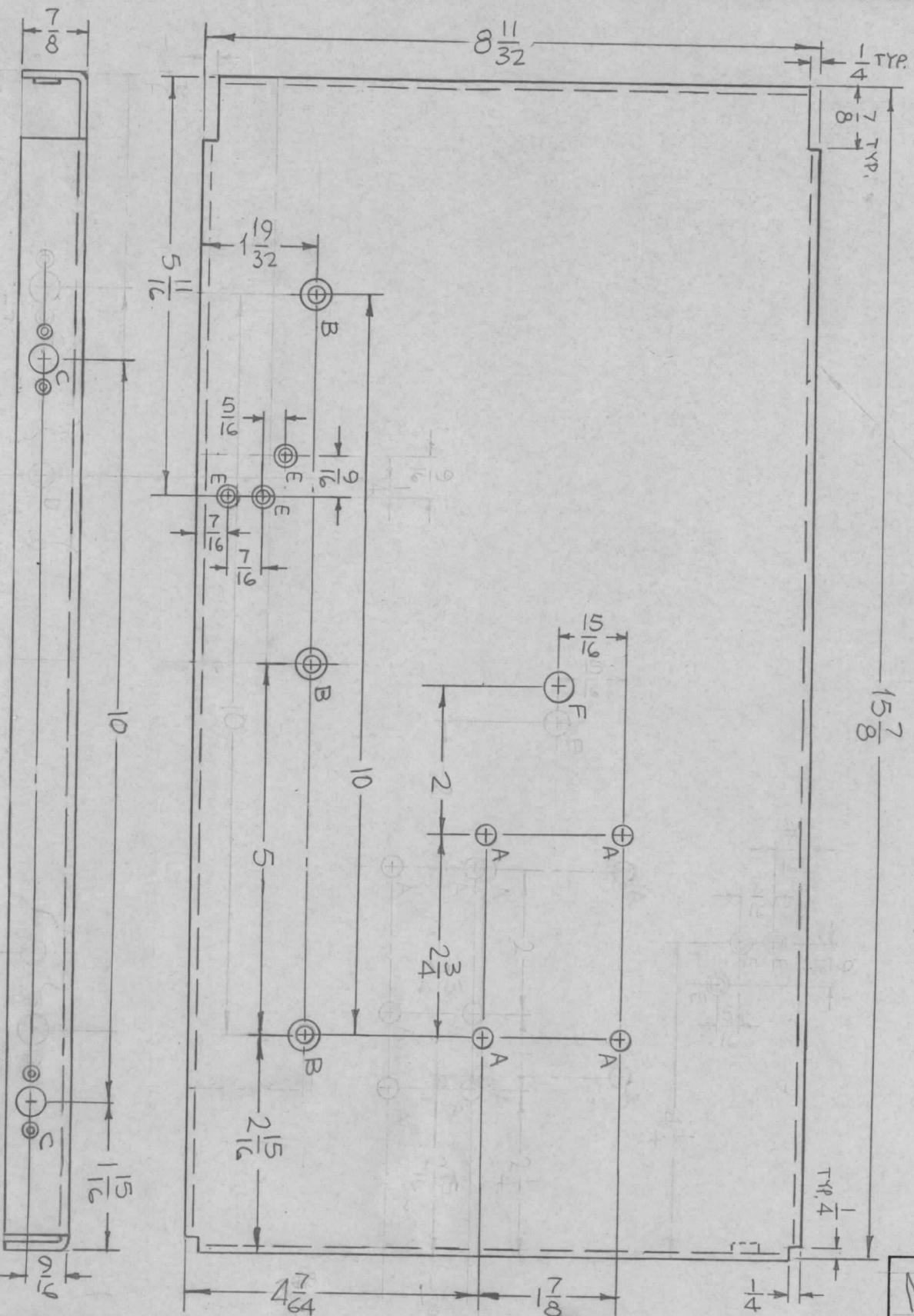
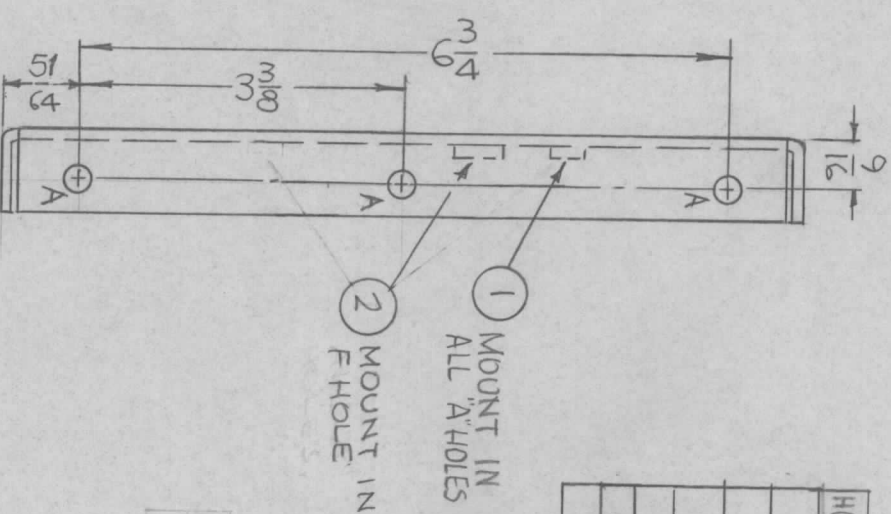
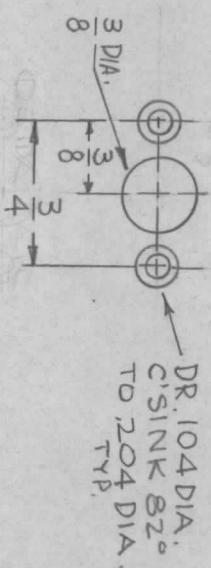


MS4974

SYM	DESCRIPTION	DATE	E.M.N. NO.	DRAFT	CHKD	APPD
X	EXPERIMENTAL RELEASE	6-2-66	X			
X1	4 7/16 DIA WAS 3 63/64	6-14-66		Jc	gms	
X2	MAT'L WAS 2024-T3	11-7-66		Jc	ms	
R	ORIGINAL RELEASE FOR PRODUCTION	11.11.66		WHD	gms	

HOLE	DESCRIPTION	REQ.
A	.250-.253 DIA.	10
B	DR.19C DIA. C'SINK 82° TO .390	3
C	SEE DETAIL	4
D	5/16 DIA.	1
E	DR.120 DIA. C'SINK 82° TO .230 DIA.	3
F	.413-.416 DIA.	1



REQ'D.	ITEM	PART NUMBER	DESCRIPTION	SYMBOL
1	2	NT129-524-G	NUT, PLAIN, SPLINE	F
10	1	NT129-1032-G	NUT, PLAIN, SPLINE	A

THE TECHNICAL MATERIEL CORP.  
MAMARONECK, NEW YORK

PLATE, SIDE, LEFT

DATE	DATE	DATE	DATE	DATE
9-1-65	11-9-66	11-10-66		

Q'TY./UNIT	MODEL USED ON	ASSY. NO.
1	AP-128	AS259

UNLESS OTHERWISE SPECIFIED:  
 1. USE MATERIAL THICKNESS FOR MAXIMUM RADIUS ON ALL BENDS  
 2. ALL ANGULAR BENDS 90 DEGREES  
 3. REMOVE ALL BURRS AND SHARP EDGES  
 4. MOUNT INSERTS AFTER FINISHING