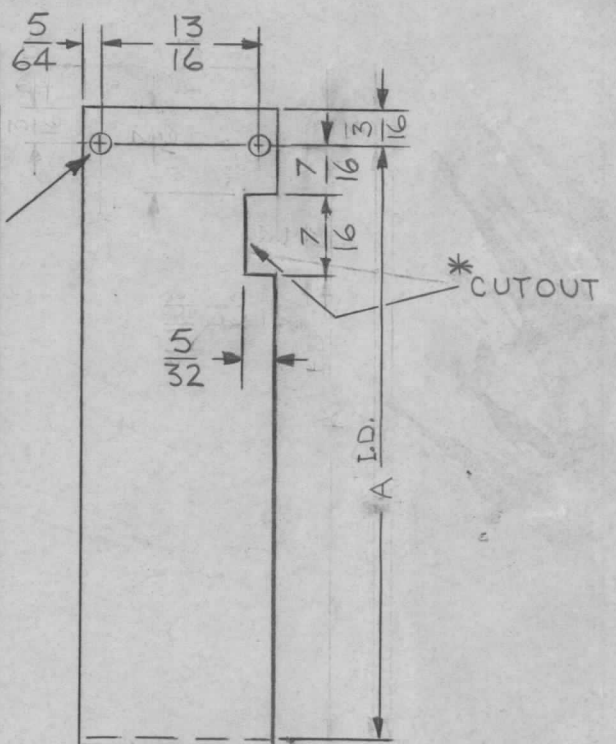
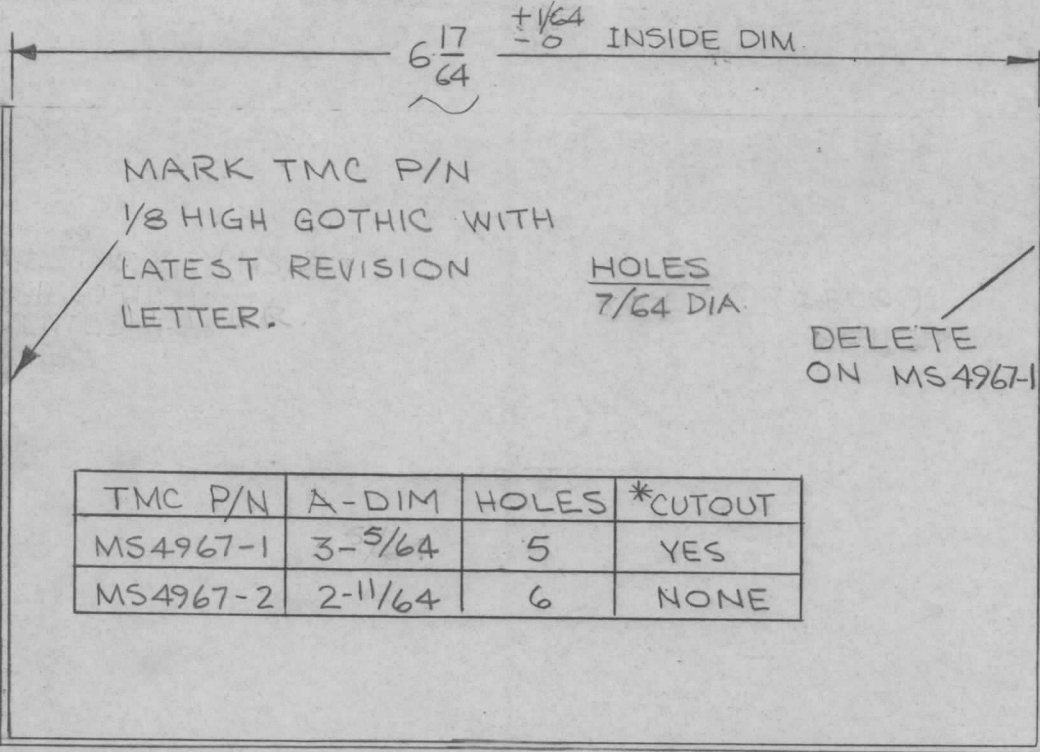
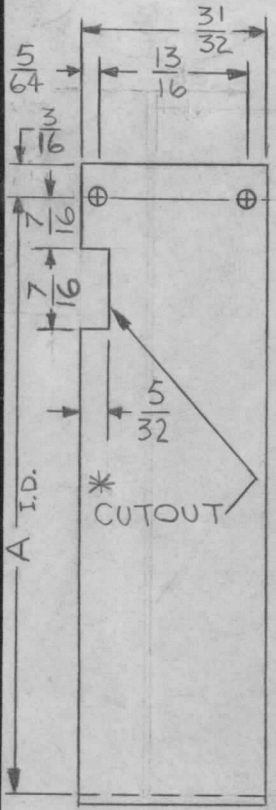
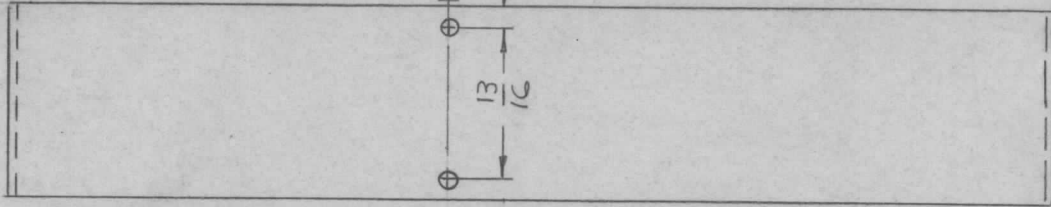


REQ. PER UNIT	USED ON			MS4967	A
	MODEL	ASS'Y. NO.	DATE		
1 EA	TLAA-2.5K	A5541	4-26-66		



TMC P/N	A-DIM	HOLES	*CUTOUT
MS4967-1	3-5/64	5	YES
MS4967-2	2-11/64	6	NONE



ORIGINAL DRAWING BY
 DATE 11/18/60
 DRAWN BY [Signature]
 CHECKED BY [Signature]
 APPROVED BY [Signature]

SYM	DESCRIPTION	DATE	CH. NO.	DRAFTS	CHECKER	ENG. APP.	REQ. ITEM	PART NO.	F. BUDETTI DESCRIPTION	SYMBOL	
A	DRAWING REVISED	2-17-67	17799	RME	[Signature]		.031 THICK		THE TECHNICAL MATERIEL CORP. MAMARONECK, NEW YORK	COVER, GEAR BOX	
Ø	ORIGINAL RELEASE FOR PRODUCTION	11/18/60	Ø	CU			STOCK SIZE				
X	EXP. RELEASE	6-13-66	X	[Signature]	[Signature]		ALUMINUM				
UNLESS OTHERWISE SPECIFIED DIMENSIONS ARE IN INCHES AND INCLUDE CHEMICALLY APPLIED OR PLATED FINISHES							SCALE DO NOT SCALE				
DECIMALS .X ± .05 .XX ± .01 .XXX ± .005		TOLERANCES		FRACTIONS ± 1/64 ANGLES ± 0° 30'		CODE A	FINISH & SPEC. NO.		ELEC. DES. APP. MECH. DES. APP.		
							5052-H32	HEAT TREAT. SPEC.	DRAWN [Signature]	CHECKED [Signature]	FINAL APPROVAL [Signature]
							S404 YEL IRIDITE		[Signature]	[Signature]	MS4967 A