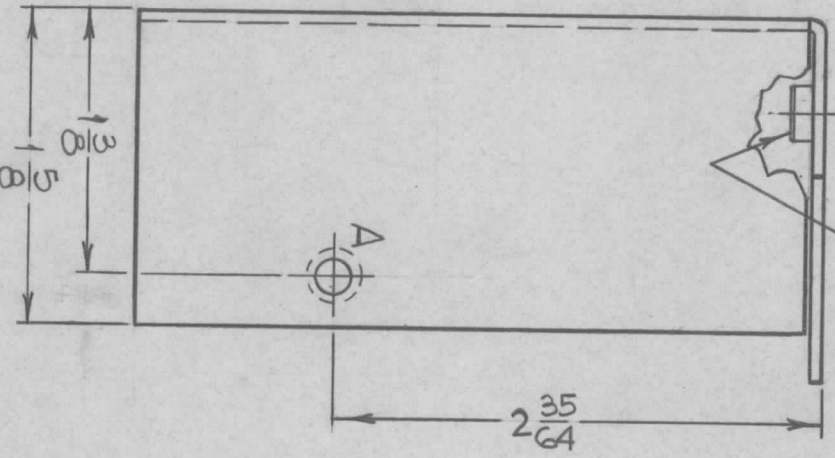
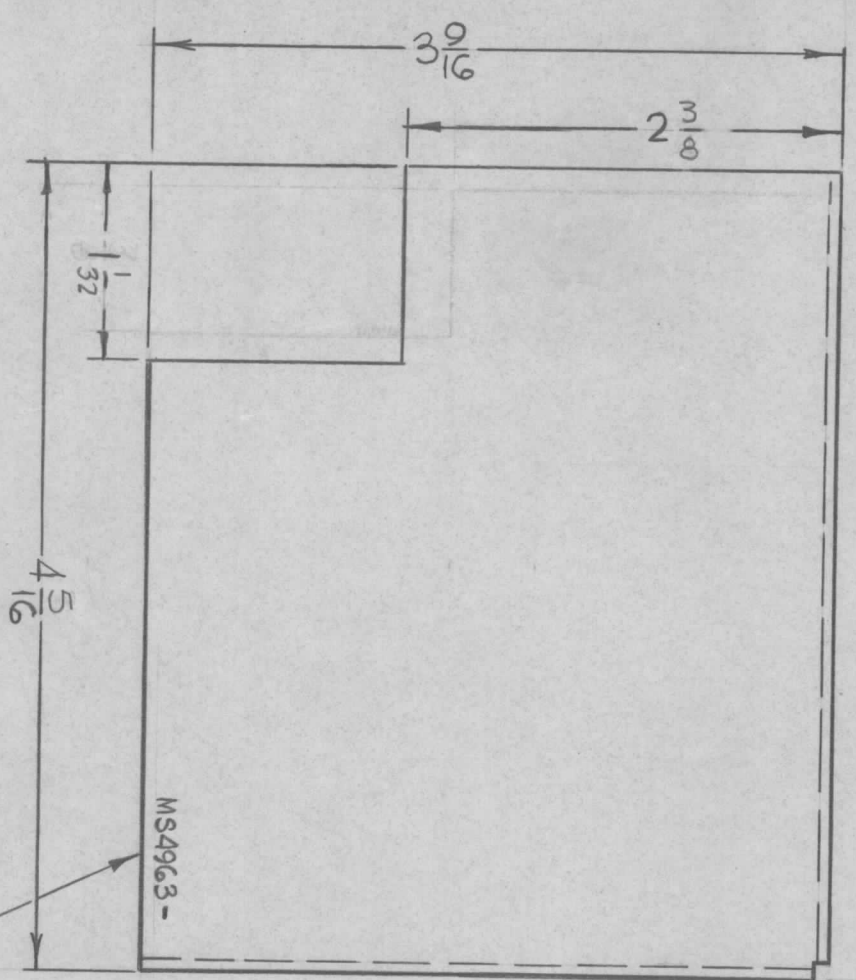
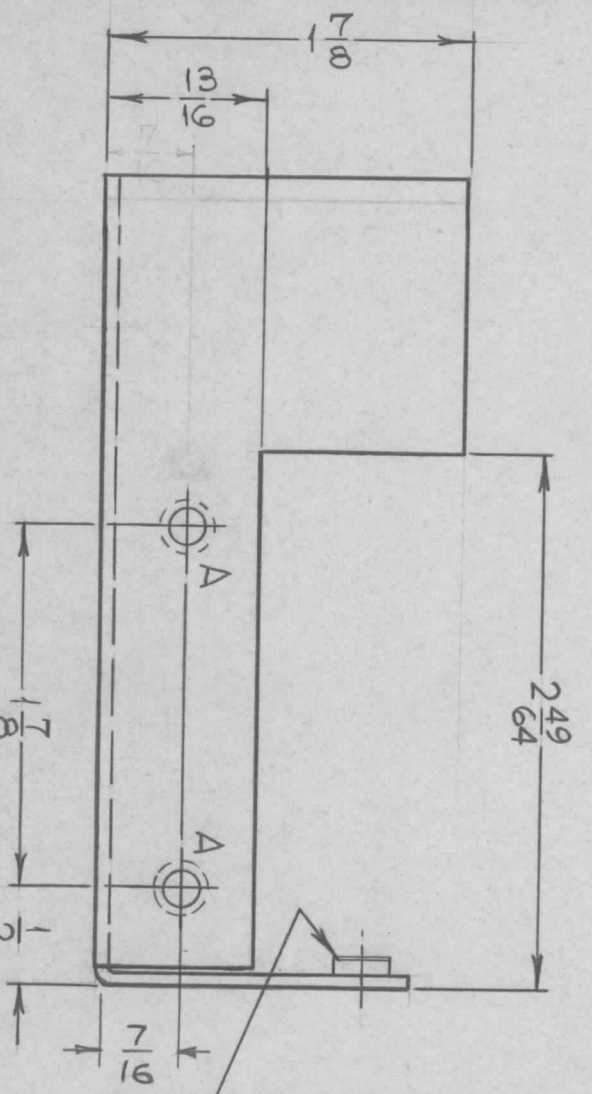


| SYMBOL | | DESCRIPTION | DATE | E.M.N. NO. | DRAFT | CHKD | APPD |
|--------|--|--|----------|------------|-------|------|------|
| X | | EXPERIMENTAL RELEASE | 6-20-66 | X | HKA | | |
| X1 | | 4-5/16 WAS 4 1/2, 2 3/8 WAS 2, 1 1/2 WAS 3/4 | 7-19-66 | X1 | NOB | | |
| Ø | | ORIGINAL RELEASE FOR PRODUCTION | 11-18-66 | Ø | RME | | |

MS4963



1 MOUNT IN ALL "A" HOLES

A - .191 - .194 DIA. - 3 REQ'D.

UNLESS OTHERWISE SPECIFIED:
 1. USE MATERIAL THICKNESS FOR MAXIMUM RADIUS ON ALL BENDS
 2. ALL ANGULAR BENDS 90 DEGREES
 3. REMOVE ALL BURRS AND SHARP EDGES
 4. MOUNT INSERTS AFTER FINISHING

MARK TMC PART NO. 1/8 HIGH
 GOTHIC W/LATEST REV. LETTER

MS4963-

NOTES

| | | | | | |
|------------|-----|-----------|---------------|-------|-----------|
| Q'TY./UNIT | 1 | TLAA-2.5K | MODEL USED ON | AS497 | ASSY. NO. |
| SCALE | 1:1 | | | | |

| REQ'D. | ITEM | PART NUMBER | DESCRIPTION | SYMBOL |
|--|------|---|----------------------------|---------------|
| 3 | 1 | NT129-632-4 | NUT, PLAIN, SPLINE | A |
| BUDETTI MATERIAL .064 THICK ALUMINUM-5052-H32 FINISH S404 YELLOW IRIDITE | | | | |
| LIST OF MATERIAL THE TECHNICAL MATERIEL CORP. MAMARONECK, NEW YORK SHIELD, RF CABLE | | | | |
| UNLESS OTHERWISE SPECIFIED DIMENSIONS ARE IN INCHES AND INCLUDE CHEMICALLY APPLIED OR PLATED FINISHES DECIMALS .X ± .05 .XX ± .01 .XXX ± .005 TOLERANCES FRACTIONS ± 1/64 ANGLES ± 0° 30' | | DRAWN H. AUSTIN CHECKED [Signature] ELECT. DES. [Signature] MECH. DES. [Signature] | | |
| | | DATE 6-20-66 | FINAL APPROVAL [Signature] | DATE 11/19/66 |
| | | DATE 11-17-66 | MS4963 | DATE 11/19/66 |
| | | DATE 11-17-66 | SHEET | REV. LTR. |