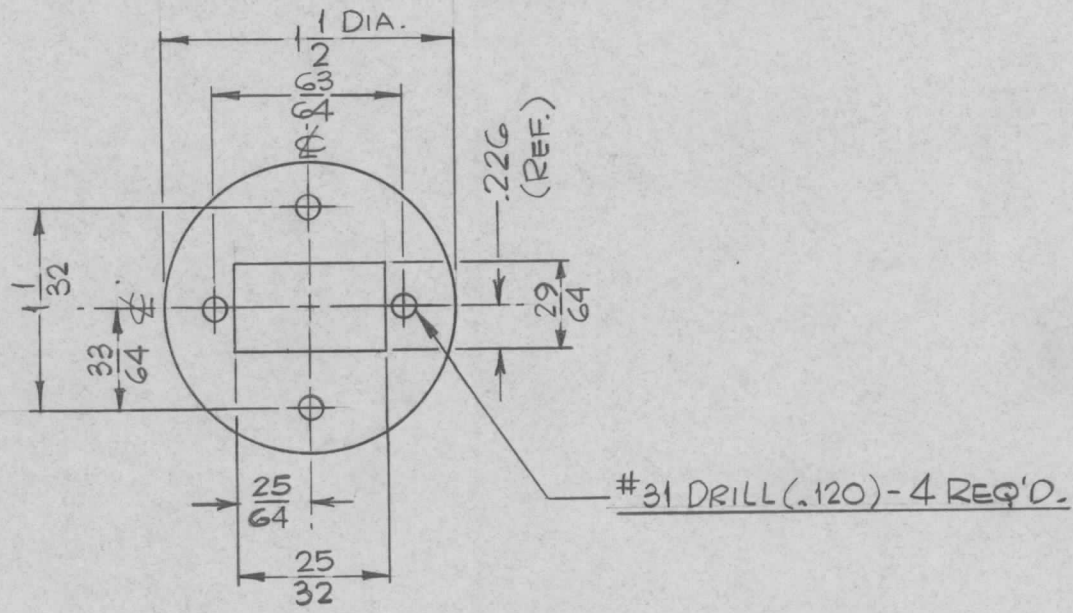


REQ. PER UNIT	USED ON			MS4960	Ø
	MODEL	ASS'Y. NO.	DATE		
1	TLAA-25K	A5540	6-3-66		



Ø	ORIGINAL RELEASE FOR PRODUCTION	DATE	Ø	CU	REQ. ITEM	PART NO.	BUDETTI	DESCRIPTION	SYMBOL	
X2	.081 WAS 3/16	7-30-66	X2	HLA	.081		THE TECHNICAL MATERIEL CORP. MAMARONECK, NEW YORK			
X1	ADDED ".226 (REF.)" DIM. W/1/8 MAT'L	6-15-66	X1	HLA	STOCK SIZE		PLATE,			
X	EXPERIMENTAL RELEASE	6-14-66	X	HLA	ALUMINUM		CONNECTOR SWITCH			
SYM	DESCRIPTION	DATE	CH. NO.	DRAFTS	CHECKER	ENG. APP.				
UNLESS OTHERWISE SPECIFIED DIMENSIONS ARE IN INCHES AND INCLUDE CHEMICALLY APPLIED OR PLATED FINISHES		SCALE		1:1						
DECIMALS		FRACTIONS		CODE		5052-H32				
.X ± .05		± 1/64		A		TYPE & TEMPER		HEAT TREAT. SPEC.		
.XX ± .01		ANGLES				S404 - YELLOW IRIDITE		DRAWN		
.XXX ± .005		± 0° 30'				FINISH & SPEC. NO.		ELEC. DES. APP.		
						6-3-66		H. AUSTIN		
						CHECKED		FINAL APPROVAL		
						MECH. DES. APP.		MS4960 Ø		