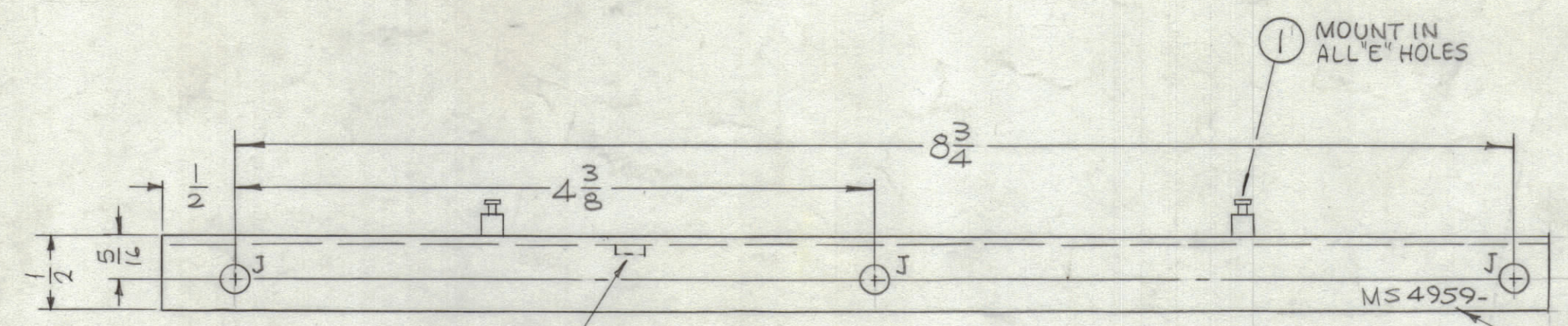
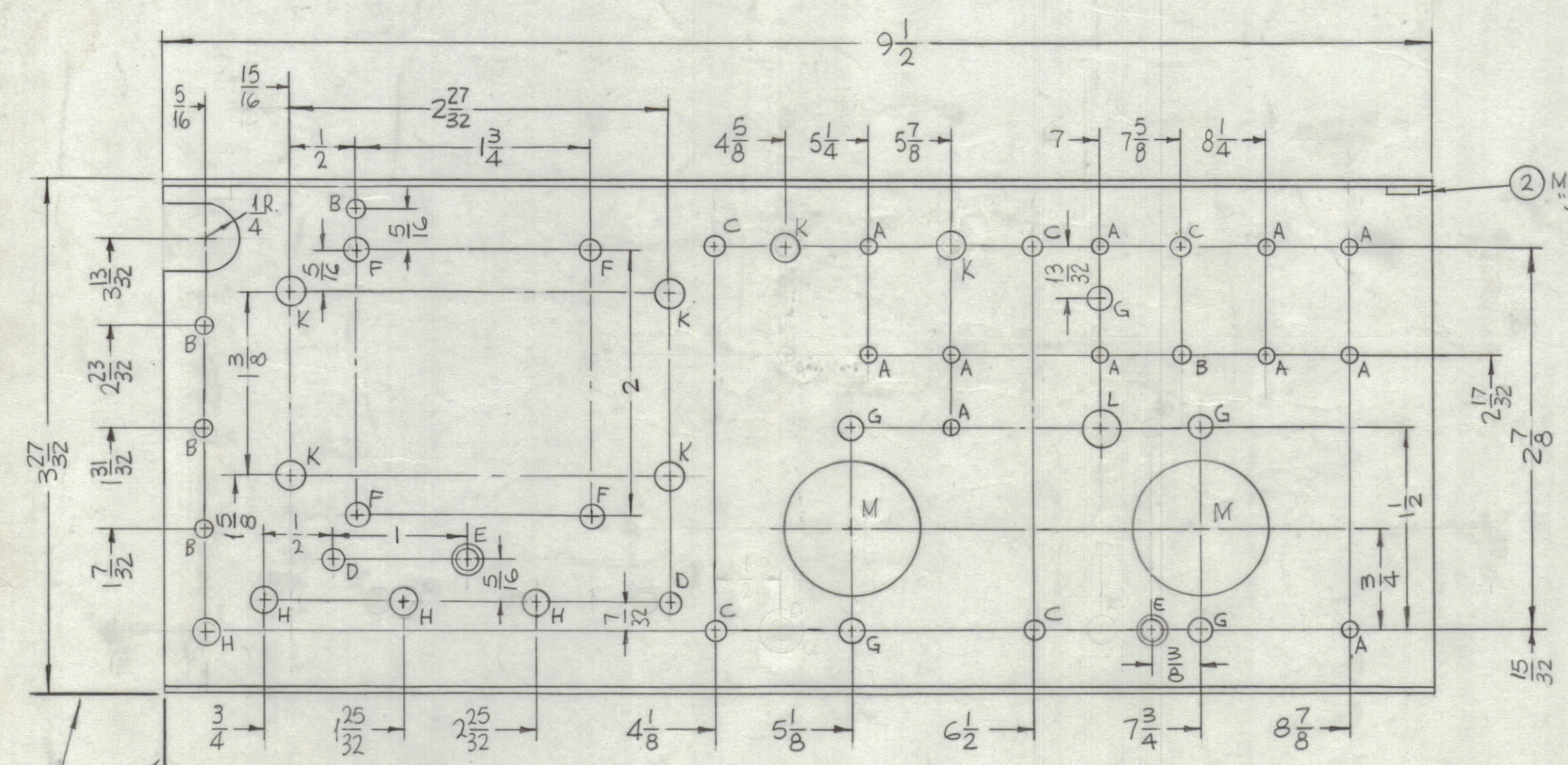


REVISIONS						
ZONE	SYM	DESCRIPTION	DATE	E.M.N. NO.	DRAFT	CHKD
	X1	REDRAWN, REVISED	7-15-66	X1		
	X2	ITEM 3 ADDED, 1A RELOCATED	7-30-66	X2		
	X2	FINISH WAS S404 YEL IRIDITE	8-5-66	X3		
	X3	ID HOLE CHANGED TO K HOLE	9-27-66	X4		
	X4	1K RELOCATED, 2B, DEL, 1C-1G-1H, ADDED, 1M DEL	11-16-66	X5		
	Ø	ORIGINAL RELEASE FOR PRODUCTION	11/6/66	Ø	CV	
	A	FINISH WAS S245 SILVER PLATE S423 SILVER KOTE	4-24-68	18893	H2	FB



MOUNT IN ALL "F" HOLES
OPPOSITE SIDE SAME

MARK TMC P/N
1/8" HIGH GOTHIC
W/LATEST REV.
LETTER.



MOUNT IN ALL "J" HOLES

HOLES	DESCRIPTION	REQ.
A	7/64 DIA.	13
B	1/8 DIA.	5
C	9/64 DIA.	5
D	5/32 DIA.	2
E	.158 ± .002 C'SINK 75°	2
F	.161-.164 DIA.	4
G	11/64 DIA.	5
H	3/16 DIA.	4
J	.191-.194 DIA.	6
K	13/64 DIA.	6
L	17/64 DIA.	1
M	1" DIA.	2

MS 4959
A

LOCATING
BASE
LINES

- UNLESS OTHERWISE SPECIFIED:
1. USE MATERIAL THICKNESS FOR MAXIMUM RADIUS ON ALL BENDS
 2. ALL ANGULAR BENDS 90 DEGREES
 3. REMOVE ALL BURRS AND SHARP EDGES
 4. MOUNT INSERTS AFTER FINISHING

1	TLAA-2.5K	A5498
Q'TY./UNIT	MODEL USED ON	ASS'Y. NO.
SCALE 1:1	CODE A	

THE CONTENTS OF THIS DRAWING ARE THE EXCLUSIVE PROPERTY OF THE TECHNICAL MATERIEL CORP. ITS UNAUTHORIZED USE OR REPRODUCTION IN WHOLE OR IN PART IS STRICTLY FORBIDDEN.

REF: TMC DWG LD2130

REQ'D.	ITEM	PART NUMBER	DESCRIPTION	SYMBOL
2	3	TE169-3	TERM. FEED THRU INS.	E
6	2	NT129-632-4	NUT, PLAIN, SPLINE	J
4	1	NT129-440-4	NUT, PLAIN, SPLINE	F

F. BUDETTI LIST OF MATERIAL

MATERIAL .064 THICK ALUM. 5052-H32		THE TECHNICAL MATERIEL CORP. MAMARONECK, NEW YORK	
FINISH S404 YEL IDIRITE		TITLE CHASSIS, COMPONENT 2ND AMPLIFIER	
UNLESS OTHERWISE SPECIFIED DIMENSIONS ARE IN INCHES AND INCLUDE CHEMICALLY APPLIED OR PLATED FINISHES	DRAWN DATE 7-15-66	FINAL APPROVAL DATE 11-16-66	DATE 11-16-66
DECIMALS .X ± .05 .XX ± .01 .XXX ± .005	TOLERANCES ± 1/64 ANGLES ± 0° 30'	ELECT. DES. DATE 11-16-66	MECH. DES. DATE 11-16-66
		SHEET	

NOTES