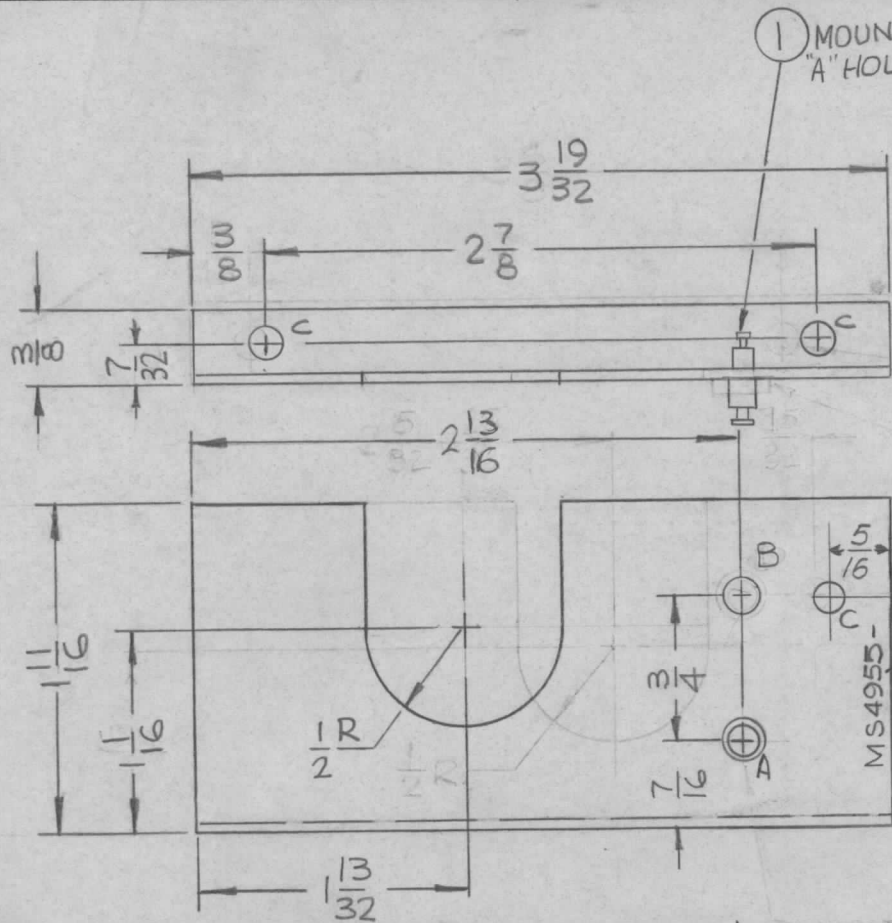


REQ. PER UNIT	USED ON			MS4955	B
	MODEL	ASS'Y. NO.	DATE		
1	TLAA-2.5K	AS498	6-6-66		



HOLES: REQ

A ~ .158 ± .003 DIA. C'SINK .175 — 1

B ~ 11/64 DIA. — 1

C ~ 9/64 DIA. — 3

MARK TMC PART NO. 1/8 HIGH GOTHIC W/LATEST REV. LETTER.

- UNLESS OTHERWISE SPECIFIED:
1. USE MATERIAL THICKNESS FOR MAXIMUM RADIUS ON ALL BENDS
 2. ALL ANGULAR BENDS 90 DEGREES
 3. REMOVE ALL BURRS AND SHARP EDGES

B	ADD "C" HOLE	2-7-69	19248	GE	JDe	FB	JDe
A	FINISH WAS S245 SILVER PLATE S423 SILVER KOTE	4-24-68	18893	H.S.	JDe	FB	JDe
Ø	ORIGINAL RELEASE FOR PRODUCTION	11-16-66	Ø	CV	JDe		
X5	NT129, 5/32 H, DEL, B WAS 191-194	11-16-66	X5	PPZ	aa		
X4	UPDATED	8-9-66	X4	G.DL	OR		
X3	FINISH WAS S404 YEL. IRIDITE	8-5-66	X3	PPZ	BC		
X2	ITEM 1 ADDED	7-30-66	X2	PPZ	BC		
X1	COMPLETELY REVISED	7-15-66	X1	PPZ	BC		
X	EXPERIMENTAL RELEASE	6-14-66	X	HLA	QB	BC	
SYM	DESCRIPTION	DATE	CH. NO.	DRAFTS	CHECKER	ENG. APP.	
UNLESS OTHERWISE SPECIFIED DIMENSIONS ARE IN INCHES AND INCLUDE CHEMICALLY APPLIED OR PLATED FINISHES		SCALE		1:1			
DECIMALS	FRACTIONS	CODE					
.X ± .05	± 1/64	A					
.XX ± .01	ANGLES						
.XXX ± .005	± 0° 30'						

1	1	TE169-3	TERM. FEED THRU, INS.	B	
REQ. ITEM	PART NO.		BUDETTI	DESCRIPTION	SYMBOL
.051		STOCK SIZE			
ALUMINUM		MATERIAL			
5052-H32		TYPE & TEMPER			
		HEAT TREAT. SPEC.			
S404 YEL IDIRITE		FINISH & SPEC. NO.			
ELEC. DES. APP.		MECH. DES. APP.		MS4955 B	
G-6-66 HAUSTIN		C/B		OR	
DRAWN		CHECKED		FINAL APPROVAL	