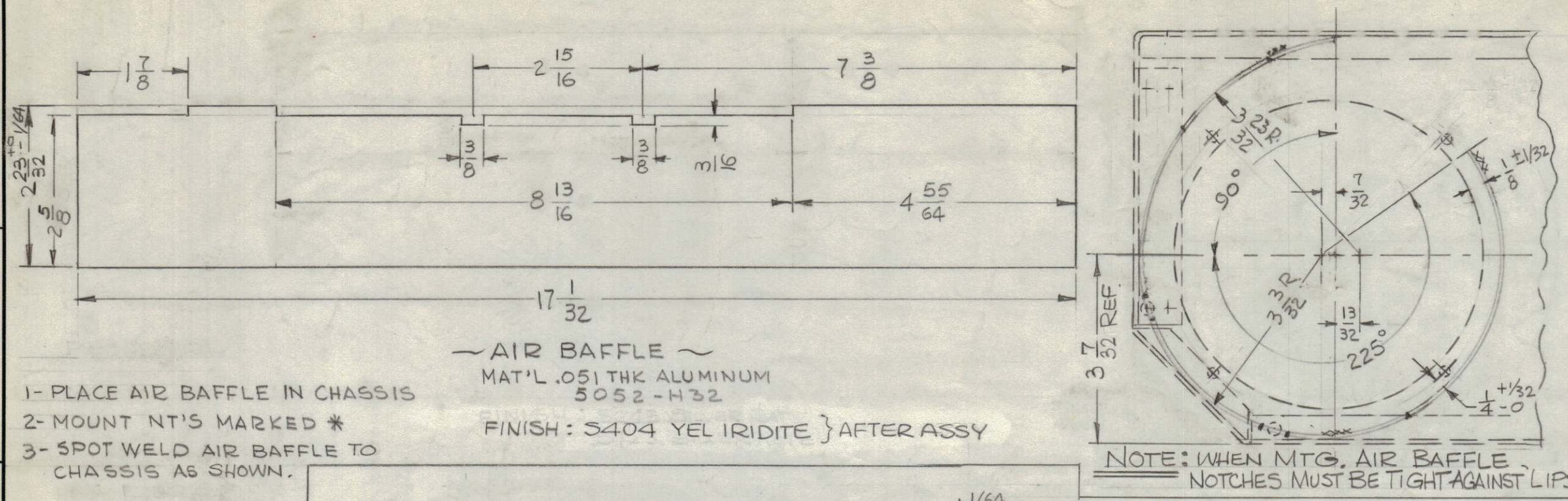


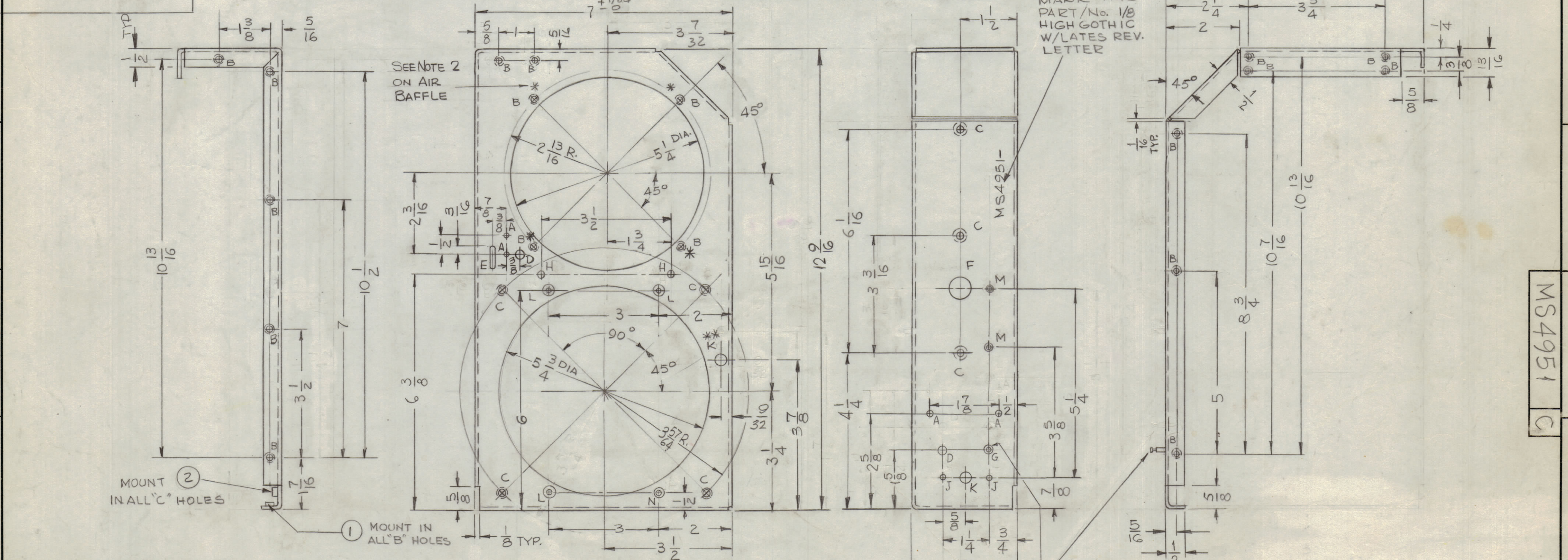
REVISIONS							
ZONE	SYM	DESCRIPTION	DATE	E.M.N. NO.	DRAFT	CHKD	APPD
	A	REVISED 45° VIEW. ADD 1/2 & 1/16 TYP DIMS	12-27-66	17571	RME		
DA	B	ØG HOLE DELETED. 3-7/8 DIM WAS 4-7/8 BENDING NOTE ADDED. ØK HOLE ADDED	2.13.67	17822	WLD		
	C	FINISH WAS S245 SILVER PLATE S423 SILVER KOTE	4-24-68	18893	H.S.		FB



~ AIR BAFFLE ~
 MAT'L .051 THK ALUMINUM 5052-H32
 FINISH: S404 YEL IRIDITE } AFTER ASSY

1- PLACE AIR BAFFLE IN CHASSIS
 2- MOUNT NT'S MARKED *
 3- SPOT WELD AIR BAFFLE TO CHASSIS AS SHOWN.

NOTE: WHEN MTG. AIR BAFFLE NOTCHES MUST BE TIGHT AGAINST LIPS.



HOLE	DESCRIPTION	REQ.
A	9/64 DIA.	4
B	.191-.194 DIA.	21
C	.221-.224 DIA.	7
D	1/4 DIA.	2
E	3/32 D. x 5/8 SLOT	1
F	5/8 DIA	1
G	.158±.002 DIA. C'SK 82° TO .175 DIA	1
H	15/64 DIA	2
J	11/64 DIA.	2
K	5/16 DIA	2
L	.169 DIA C'SK 82° TO .337 DIA.	3
M	.104 DIA C'SK 82° TO .204 DIA.	2
N	.144 DIA. C'SINK 82° TO .284 DIA.	1

UNLESS OTHERWISE SPECIFIED:

- USE MATERIAL THICKNESS FOR MAXIMUM RADIUS ON ALL BENDS
- ALL ANGULAR BENDS 90 DEGREES
- REMOVE ALL BURRS AND SHARP EDGES
- MOUNT INSERTS AFTER FINISHING

NOTES

QTY./UNIT	MODEL USED ON	ASS'Y. NO.
SCALE 1:2	CODE	
THE CONTENTS OF THIS DRAWING ARE THE EXCLUSIVE PROPERTY OF THE TECHNICAL MATERIEL CORP. ITS UNAUTHORIZED USE OR REPRODUCTION IN WHOLE OR IN PART IS STRICTLY FORBIDDEN.		

REF: TMC DWG LD2128

REQ'D.	ITEM	PART NUMBER	DESCRIPTION	SYMBOL
1	3	TE169-4	FEED-THRU, TEFLON	G
7	2	NT129-832-4	NUT, PLAIN SPLINE	C
2	1	NT129-632-4	NUT, PLAIN SPLINE	B

BUDETTI LIST OF MATERIAL

MATERIAL	.081 THK ALUMINUM 5052-H32	TITLE	CHASSIS, FINAL AMPL
FINISH	S404 YEL IRIDITE	DRAWN	G.D.L
		CHECKED	J.P.S
		ELECT. DES.	J.P.S
		MECH. DES.	J.P.S

DATE	5-16-66	FINAL APPROVAL	[Signature]
DATE	11-17-66	DATE	11-17-66
DATE	11-17-66	DATE	11-17-66

UNLESS OTHERWISE SPECIFIED DIMENSIONS ARE IN INCHES AND INCLUDE CHEMICALLY APPLIED OR PLATED FINISHES

TOLERANCES
 DECIMALS
 .XX ± .01
 .XXX ± .005
 FRACTIONS
 ± 1/64 ANGLES
 ± 0° 30'