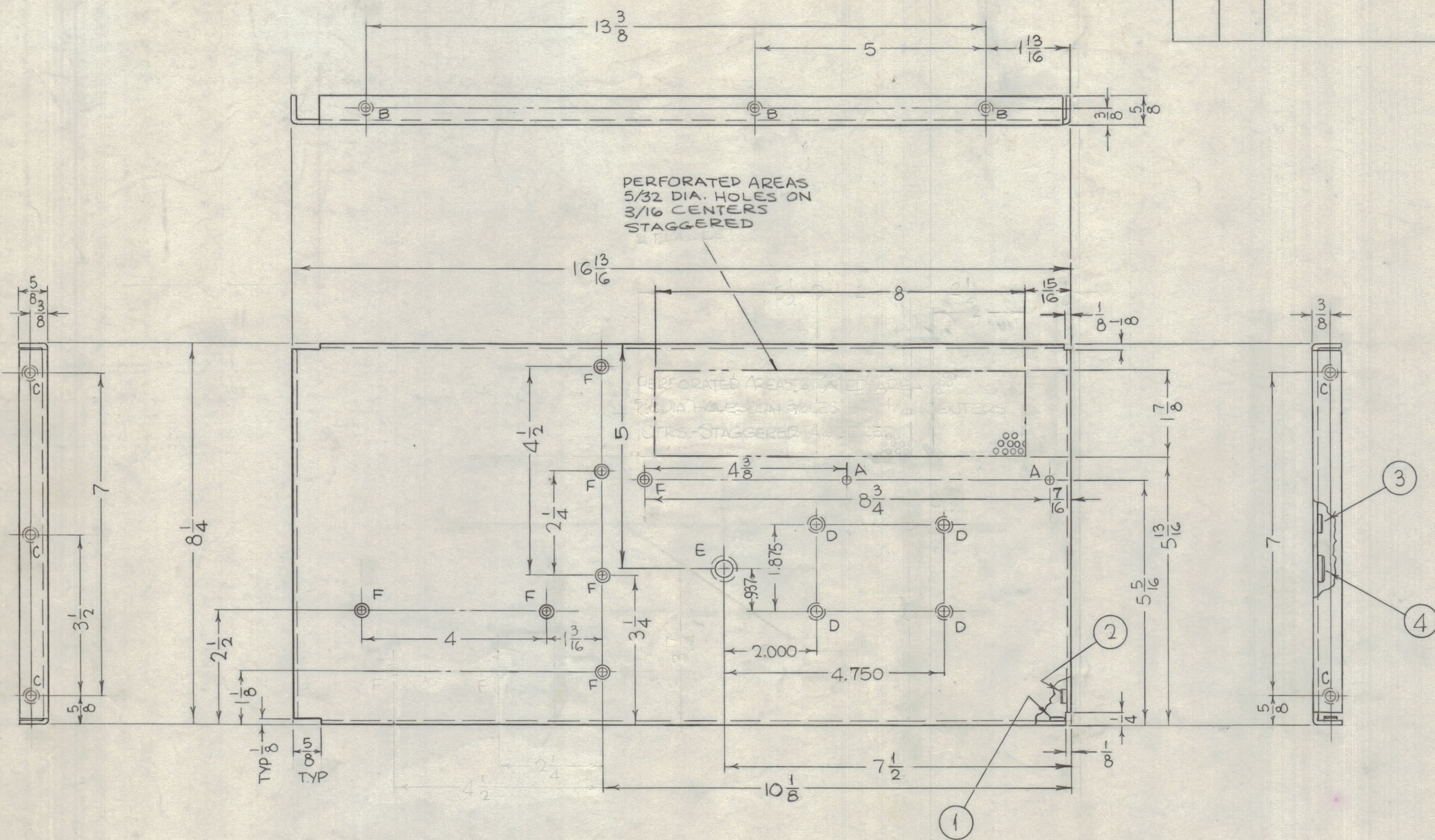
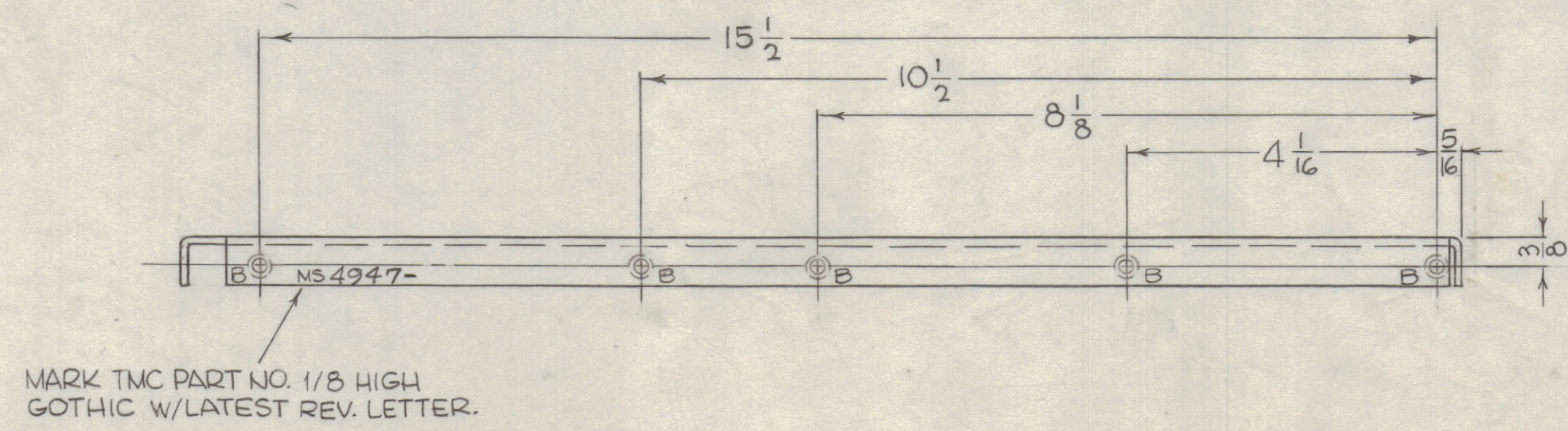


REVISIONS							
ZONE	SYM	DESCRIPTION	DATE	E.M.N. NO.	DRAFT	CHKD	APPD
X		EXPERIMENTAL RELEASE	6.14.66	X	HGA	JTB	JTB
X1		PERFORATED AREA REVISED	8.4.66	X1	MLB	JTB	JTB
X2		2 F HOLES DELETED	9.24.66	X2	MLB	JTB	JTB
Ø		ORIGINAL RELEASE FOR PRODUCTION	11.11.66	Ø	WFO	JTB	JTB



HOLES	REQ.
A - .1164 DIA.	2
B - .191 - .194 DIA.	8
C - .221 - .224 DIA.	5
D - .250 - .253 DIA.	4
E - .413 - .416 DIA.	1
F - DRILL .144 DIA. THRU, CSK 82° TO .284 DIA.	7



- UNLESS OTHERWISE SPECIFIED:
1. USE MATERIAL THICKNESS FOR MAXIMUM RADIUS ON ALL BENDS
 2. ALL ANGULAR BENDS 90 DEGREES
 3. REMOVE ALL BURRS AND SHARP EDGES
 4. MOUNT INSERTS AFTER FINISHING

REQ'D.	ITEM	PART NUMBER	DESCRIPTION	SYMBOL
1	4	NT129-524-4	NUT, PLAIN SPLINE	E
6	3	NT129-1032-4	NUT, PLAIN SPLINE	D
5	2	NT129-832-4	NUT, PLAIN SPLINE	C
8	1	NT129-632-4	NUT, PLAIN SPLINE	B

BUDETTI		LIST OF MATERIAL	
MATERIAL: 081 PERFORATED ALUMINUM, 5052 - H32		THE TECHNICAL MATERIEL CORP. MAMARONECK, NEW YORK	
FINISH: S404 - IRIODITE, 14-2 AL-COAT		TITLE: PLATE, SIDE LEFT	
UNLESS OTHERWISE SPECIFIED DIMENSIONS ARE IN INCHES AND INCLUDE CHEMICALLY APPLIED OR PLATED FINISHES	DRAWN: [Signature]	DATE: 11/11/66	FINAL APPROVAL: [Signature]
DECIMALS: .X ± .05, .XX ± .01, .XXX ± .005	TOLERANCES: ± 1/64, ANGLES ± 0° 30'	ELECT. DES. [Signature]	DATE: 11-7-66
THE CONTENTS OF THIS DRAWING ARE THE EXCLUSIVE PROPERTY OF THE TECHNICAL MATERIEL CORP. ITS UNAUTHORIZED USE OR REPRODUCTION IN WHOLE OR IN PART IS STRICTLY FORBIDDEN.		MECH. DES. [Signature]	DATE: 11-7-66
NOTES		SHEET	REV. LTR.

MS4947