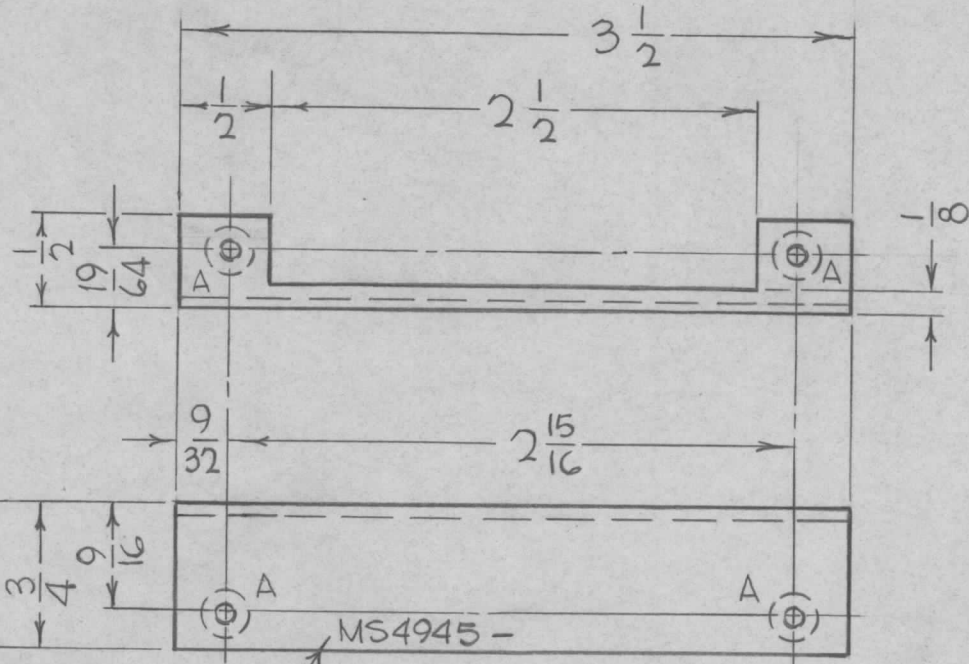


REQ. PER UNIT	USED ON			MS4945	Ø
	MODEL	ASS'Y. NO.	DATE		
1	TLAA-2.5K	A5492	5-24-66		



HOLES REQ.  
A-.161-.164 DIA. 4

MARK TMC PART NO. 1/8 HIGH GOTHIC, W/LATEST REVISION LETTER.

- UNLESS OTHERWISE SPECIFIED:
1. USE MATERIAL THICKNESS FOR MAXIMUM RADIUS ON ALL BENDS
  2. ALL ANGULAR BENDS 90 DEGREES
  3. REMOVE ALL BURRS AND SHARP EDGES
  4. MOUNT INSERTS AFTER FINISHING

4	1	NT129-440-4	NUT, PLAIN, SPLINE			
REQ.	ITEM	PART NO.	BUDETTI	DESCRIPTION	SYMBOL	
Ø	ORIGINAL RELEASE FOR PRODUCTION	7/28.66	AA	WHD		
X	EXPERIMENTAL RELEASE	6/14.66	X	HLA	QCB	BB
SYM	DESCRIPTION	DATE	CH. NO.	DRAFTS	CHECKER	ENG. APP.
UNLESS OTHERWISE SPECIFIED DIMENSIONS ARE IN INCHES AND INCLUDE CHEMICALLY APPLIED OR PLATED FINISHES		SCALE				
DECIMALS	FRACTIONS	CODE				
.X ± .05	± 1/64					
.XX ± .01	ANGLES					
.XXX ± .005	± 0° 30'					
TOLERANCES						
.062 THICK		THE TECHNICAL MATERIEL CORP. MAMARONECK, NEW YORK				
ALUMINUM		BRKT & CONNECTOR MTG.				
MATERIAL						
5052-H32		JBC	QCB	BB	M. J. M. J.	
TYPE & TEMPER	HEAT TREAT. SPEC.	DRAWN	CHECKED	FINAL APPROVAL		
S404-IRIDIOTE, 14-2 ALCOAT		BB	BB	MS4945 Ø		
FINISH & SPEC. NO.		ELEC. DES. APP.	MECH. DES. APP.			