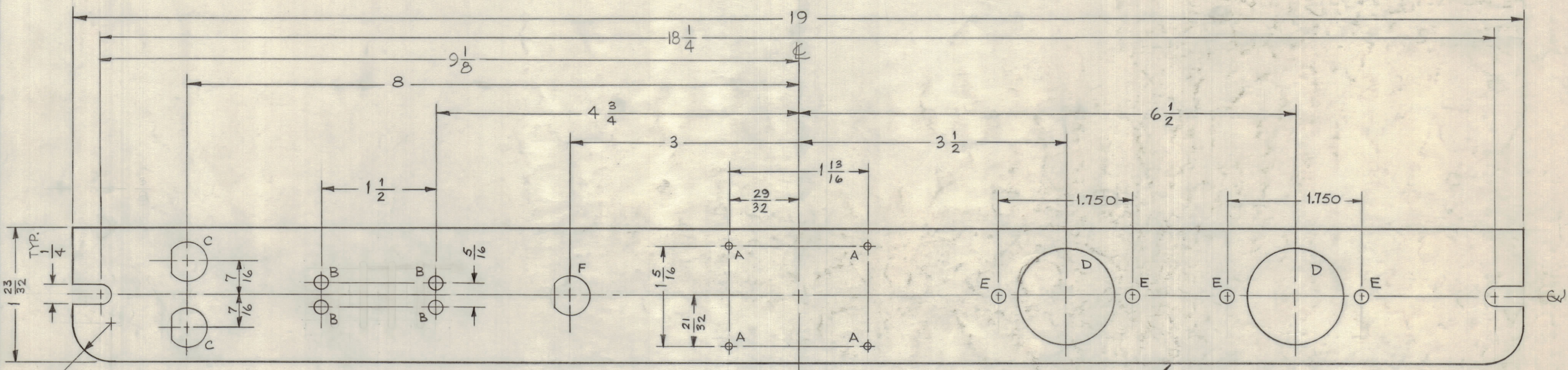


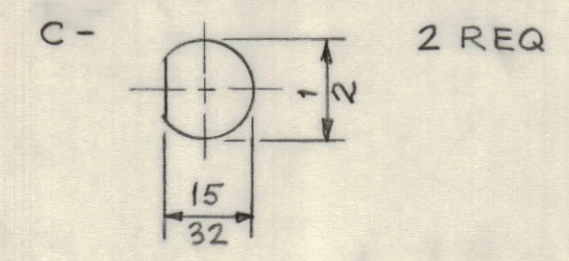
REVISIONS						
SYM	ZONE	DESCRIPTION	DATE	E.M.N. NO.	DRAFT	CHKD APPD
X1	B7	D HOLE WAS 1/4 DIA	4/21/66	-	MJT	JRB
X2	E6	B HOLE WAS 11/64 DIA	4-25-66	-	COL	
Ø	-	ORIGINAL RELEASE FOR PROD	4/28/66	Ø		
A	-	CHG'D 1-25/32 TO 1-23/32	1-5-67	17585	RME	JRS



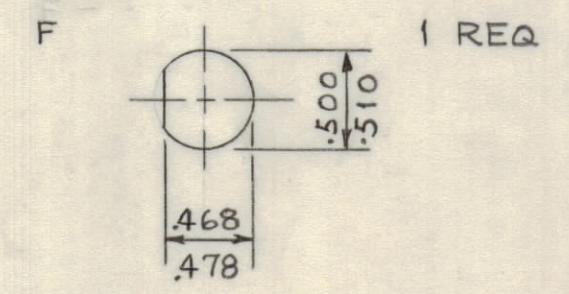
FRONT VIEW SHOWN

METAL STAMP TMC PT/NO 1/8 HIGH GOTHIC ON REAR OF PANEL WITH LATEST REV. LETTERS

A - #48 DR (076) 4 REQ
 B - 9/64 DIA. 4 REQ



D - $1\frac{9}{32}$ DIA 2 REQ
 E - 11/64 DIA 4 REQ



MACHINING:

- MILL ALL EDGES.
- HOLES MUST BE DRILLED, UNLESS OTHERWISE SPECIFIED.
- LATERAL BOW OF PANEL MUST BE KEPT TO .031 TOLERANCE.
- PANEL MUST BE FREE OF ALL MACHINING MARKS, GOUGES AND SCRATCHES. IF NECESSARY, SAND FRONT OF PANEL WITH NO. 120 GRIT SANDPAPER.

FINISH NOTES:

- S404 - IRIDITE 14-2 AL-COAT.
- S114 - ZINC CHROMATE PRIMER) FRONT AND
- S115 - SMOOTH GRAY ENAMEL) EDGES ONLY

MAXIMUM ALLOWABLE TOLERANCES HAVE BEEN DETERMINED AND ANY DEVIATIONS WILL BE CAUSE FOR REJECTION.

UNLESS OTHERWISE SPECIFIED DIMENSIONS ARE IN INCHES TOLERANCES ON FRACTIONS DECIMALS ANGLES $\pm 1/64$ $\pm .005$ $\pm 1/2^\circ$

MATERIAL 3/16 THICK ALUMINUM 2024-T3

FINISH SEE NOTE

REF: LD2075

QTY REQ	ITEM	PART NO.	DESCRIPTION	SYMBOL
	CARTER		BILL OF MATERIAL	XMS 112-3
			THE TECHNICAL MATERIEL CORP. MAMARONECK, NEW YORK	
			PANEL, FRONT	
			UTILITY PANEL, APP-14	
			CODE	SIZE
			82679	C
			DWG. NO.	ISSUE
			MS4916	A
			SCALE 1:1	SHEET OF