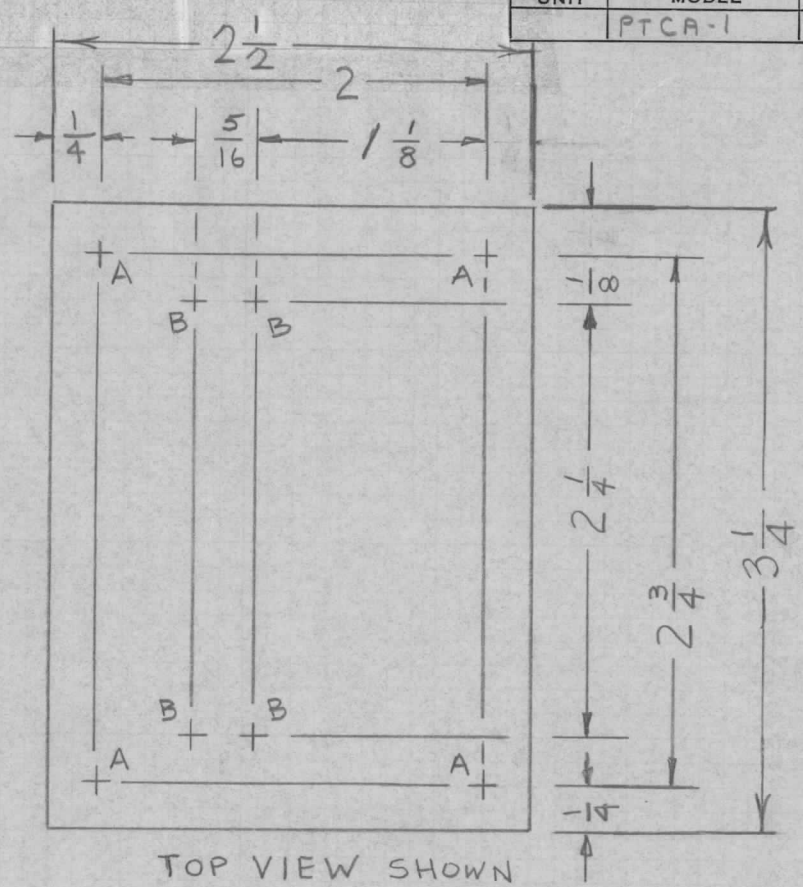


REQ. PER UNIT	USED ON		
	MODEL	ASS'Y. NO.	DATE
	PTCA-1	RAK-77-2	

MS4902 A



A - 11/64 DIA. (4 REQ'D.)
 B - DRILL .120 DIA THRU, C'SK 82° X .230 DIA FROM REAR (4 REQ'D.)

TOP VIEW SHOWN

REF: LD2067

							REQ. ITEM	PART NO.	STURMER	DESCRIPTION	MSPE10667H	SYMBOL
								3 1/4 x 2 1/2 x .064	THE TECHNICAL MATERIEL CORP. MAMARONECK, NEW YORK			
A	"A HOLE WAS 9/64." "B" HOLE #27 DR THRU C'SK 82° X .230 DIA	1-6-67	17625	WHO	QPS	MM		STOCK SIZE	PLATE, T.B. MTS.			
Ø	ORIGINAL RELEASE	4/6/66	Ø	HLA				ALUMINUM				
SYM	DESCRIPTION	DATE	CH. NO.	DRAFTS	CHECKER	ENG. APP.	MATERIAL					
UNLESS OTHERWISE SPECIFIED DIMENSIONS ARE IN INCHES AND INCLUDE CHEMICALLY APPLIED OR PLATED FINISHES			SCALE				5052-H32		M. STURMER	QPS	MM	
							TYPE & TEMPER	HEAT TREAT. SPEC.	11-19-20	CHECKED	FINAL APPROVAL	
DECIMALS	TOLERANCES	FRACTIONS	CODE					SA04 YEL IRIDITE		3/25/66	MS4902 A	
.X ± .05		± 1/64						FINISH & SPEC. NO.	ELEC. DES. APP.	MECH. DES. APP.		
.XX ± .01		ANGLES										
.XXX ± .005		± 0° 30'										