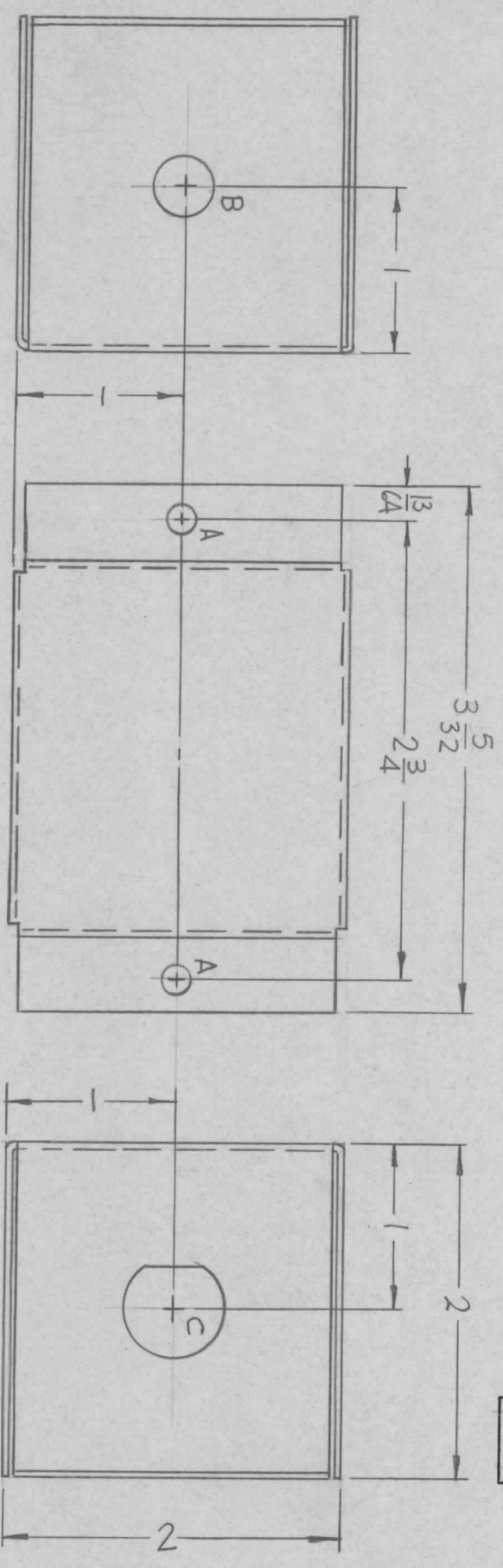


SYMBOL		DESCRIPTION	DATE	E.M.N. NO.	DRAFT	CHKD	APPD
Ø		ORIGINAL RELEASE FOR PRODUCTION	4-12-66	Ø	G.D.L.		
A		CHG'D ASSY NO. FR AX531 TO AX534	8-18-66	CC	RME		
B		REF: LD22520 GPT-10KLF ADDED	11/30/67	CC	Emp		

REVISIONS

MS4900 B



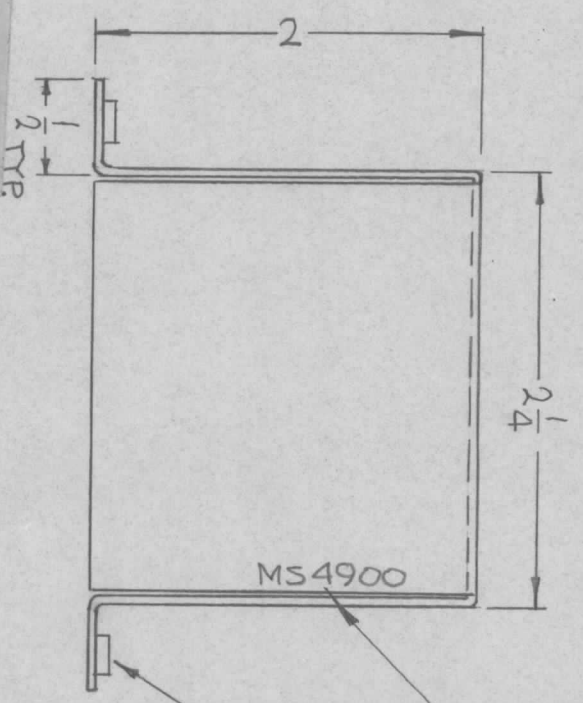
HOLES:  
 A - .191-.194 DIA. (2 REQ)  
 B - 3/8 DIA. (1 REQ.)  
 C - SEE DETAIL

MARK TMC P/N  
 HIGH GOTHIC  
 W/LATEST REV.  
 LETTER.

① MOUNT IN  
 1/8" HOLES

UNLESS OTHERWISE SPECIFIED:

1. USE MATERIAL THICKNESS FOR MAXIMUM RADIUS ON ALL BENDS
2. ALL ANGULAR BENDS 90 DEGREES
3. REMOVE ALL BURRS AND SHARP EDGES
4. MOUNT INSERTS AFTER FINISHING



QTY./UNIT	1	GPT-10KLF	MODEL USED ON	AX 534
SCALE	1:1	GPT-10KLF	CODE	A

THE CONTENTS OF THIS DRAWING ARE THE EXCLUSIVE PROPERTY OF THE TECHNICAL MATERIEL CORP. ITS UNAUTHORIZED USE OR REPRODUCTION IN WHOLE OR IN PART IS STRICTLY FORBIDDEN.

REQ'D	2	ITEM	1	PART NUMBER	NT129-632-3	DESCRIPTION	NUT, PLAIN, SPLINE	SYMBOL	A
F. BUDETTI									

LIST OF MATERIAL

MATERIAL  
 .051 THICK ALUMINUM  
 5052-H32

FINISH  
 S404 YEL. IRIDITE

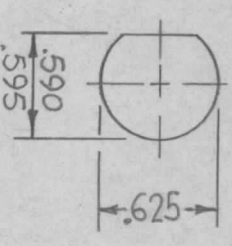
TITLE  
 BOX, MTG. FUSE  
 MAMARONECK, NEW YORK

THE TECHNICAL MATERIEL CORP.

UNLESS OTHERWISE SPECIFIED  
 DIMENSIONS ARE IN INCHES AND INCLUDE  
 CHEMICALLY APPLIED OR PLATED FINISHES

DRAWN	CHEKED	DATE	DATE	DATE	DATE	DATE
		3-23-66	3/28/66	4-7-66		
ELECT. DES.	MECH. DES.					

FINAL APPROVAL  
 MS4900  
 REV. LTR. B



C-DETAIL  
 (1 REQ)

LD2252 - GPT-10KLF  
 REF: LD 2066 - GPT-10KLF  
 AX 534