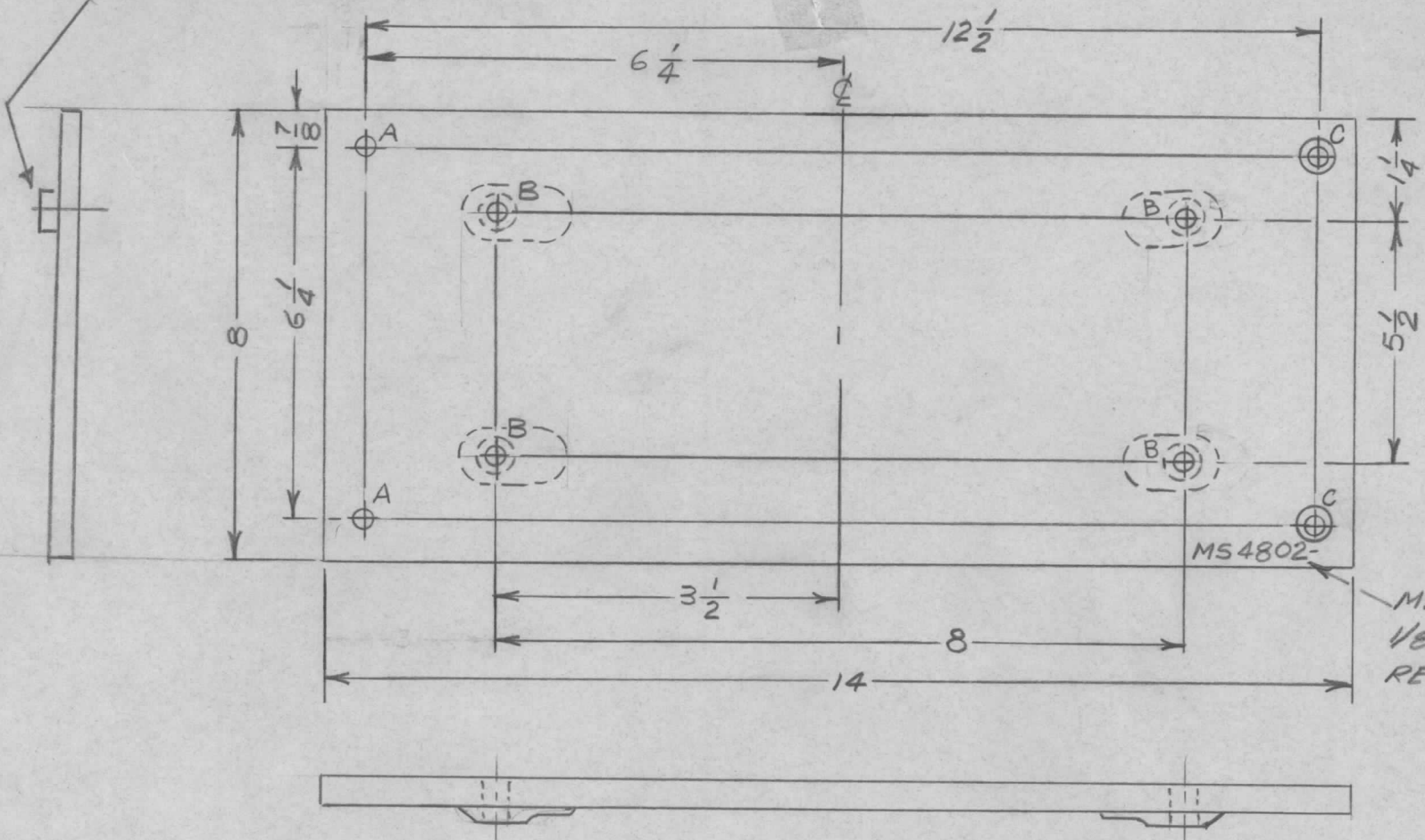


MOUNT 1/4-20 WELD NUT  
IN "B" HOLES AS SHOWN  
AFTER FINISHING

REQ. PER UNIT	USED ON		
	MODEL	ASS'Y. NO.	DATE
1	GPT-40KEF	AP118	1/14/66

MS4802 A

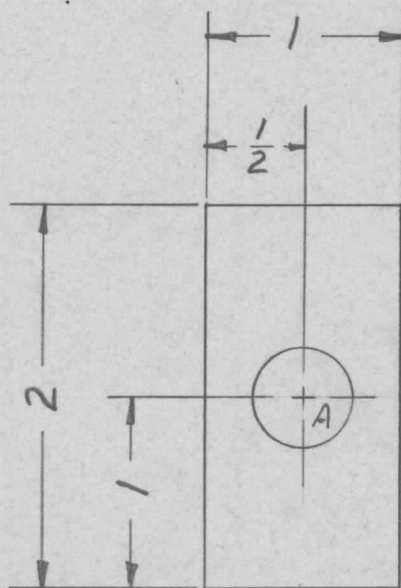


**HOLES**  
A-5/16 DIA. (2 REQ.)  
B-1/4-20 WELD NUT (4 REQ.)  
C-DRILL .270 DIA. C'SINK 82° TO .520 DIA. (2 REQ.)

METAL STAMP TMC P/N 1/8 HIGH GOTHIC W/LATEST REVISION LETTER.

REQ.	ITEM	PART NO.	BUDETTI	DESCRIPTION	SYMBOL						
		3/16 THICK STOCK SIZE	THE TECHNICAL MATERIEL CORP. MAMARONECK, NEW YORK								
A	LOCATION OF WELD NUTS ADDED	10-3-66	16965	PLATE, MTG. XFMR							
Ø	ORIG. RELEASE FOR PROD.	1-26-66	Ø								
SYM	DESCRIPTION	DATE	CH. NO.	DRAFTS	CHECKER	ENG. APP.	MATERIAL	DRAWN	CHECKED	FINAL APPROVAL	
UNLESS OTHERWISE SPECIFIED DIMENSIONS ARE IN INCHES AND INCLUDE CHEMICALLY APPLIED OR PLATED FINISHES		SCALE		TYPE & TEMPER		HEAT TREAT. SPEC.		DRAWN		FINAL APPROVAL	
DECIMALS .X ± .05 .XX ± .01 .XXX ± .005		TOLERANCES		FRACTIONS ± 1/64 ANGLES ± 0° 30'		CODE		D.V.V. [Signature]		MS4802 A	
FINISH & SPEC. NO.		ELEC. DES. APP.		MECH. DES. APP.							

REQ. PER UNIT	USED ON			MS4807	Ø
	MODEL	ASS'Y. NO.	DATE		
1	CSS-3		11-17-65		



REMOVE ALL BURRS & SHARP EDGES.

FRONT VIEW

$A \sim \frac{1}{2} \text{Ø}$  1 REQ.

MARK W/TMC P/N ON REAR  
W/LATEST REVISION LETTER.

$\frac{1}{8}$  HIGH GOTHIC.

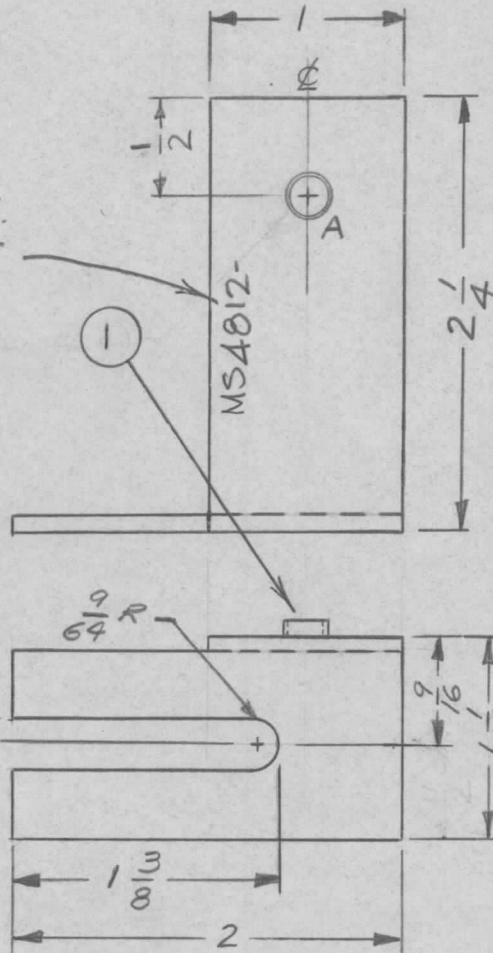
REF: LD 2019

REQ.	ITEM	PART NO.	DESCRIPTION				SYMBOL
		.051	THE TECHNICAL MATERIEL CORP.				
		STOCK SIZE	MAMARONECK. NEW YORK				
		ALUMINUM	PLATE, ALARM SWITCH				
		MATERIAL					
Ø	ORIGINAL RELEASE	11/17/65					
SYM	DESCRIPTION	DATE	CH. NO.	DRAFTS	CHECKER	ENG. APP.	
UNLESS OTHERWISE SPECIFIED DIMENSIONS ARE IN INCHES AND INCLUDE CHEMICALLY APPLIED OR PLATED FINISHES		SCALE					
		FULL					
DECIMALS	TOLERANCES	FRACTIONS	CODE				
.X ± .05		± 1/64					
.XX ± .01		ANGLES					
.XXX ± .005		± 0° 30'					
		5052 H32		B/M	JR 11/17/65	M. J. [Signature] 11/17/65	
		TYPE & TEMPER	HEAT TREAT. SPEC.	DRAWN	CHECKED	FINAL APPROVAL	
		S 404 YEL. IRIDITE					
		FINISH & SPEC. NO.	ELEC. DES. APP.	MECH. DES. APP.	MS4807 Ø		

TMC P/N	DESCRIPTION
MS -1	AS SHOWN
MS -2	OPPOSITE HAND

REQ. PER UNIT	USED ON			MS 4812	A
	MODEL	ASS'Y. NO.	DATE		
1	HVRC-2				

MARK TMC PT. NO. W/ LATEST REV. LETTER



HOLE REQ  
A.221-.224 DIA. 1

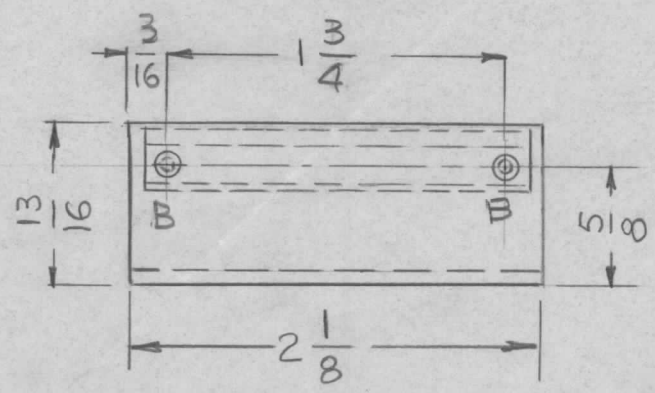
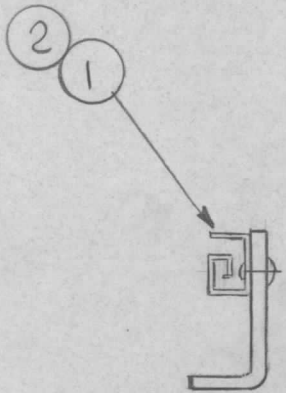
UNLESS OTHERWISE SPECIFIED:

1. USE MATERIAL THICKNESS FOR MAXIMUM RADIUS ON ALL BENDS
2. ALL ANGULAR BENDS 90 DEGREES
3. REMOVE ALL BURRS AND SHARP EDGES
4. MOUNT INSERTS AFTER FINISHING

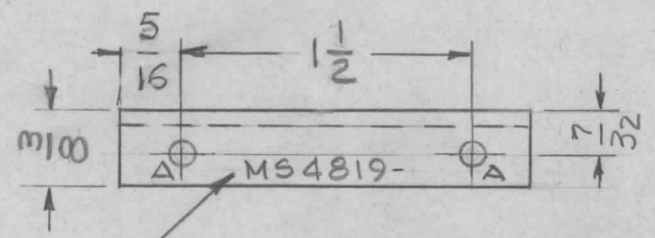
REQ. ITEM	PART NO.	BUDETTI DESCRIPTION	SYMBOL
1	NT129832-4	NUT, PLN SPLINE	
.081 THK		THE TECHNICAL MATERIEL CORP. MAMARONECK, NEW YORK	
STOCK SIZE		BRACKET, MTG. BD.	
ALUMINUM			
MATERIAL			
50-52 H32		DAVID V VENEZIAN 11-18-65	JCS 11/19/65
TYPE & TEMPER	HEAT TREAT. SPEC.	DRAWN	CHECKED
5404 IRIDITE, 14-2			
AL-COAT			
FINISH & SPEC. NO.	ELEC. DES. APP.	MECH. DES. APP.	
			MS 4812 A

SYM	DESCRIPTION	DATE	CH. NO.	DRAFTS	CHECKER	ENG. APP.
A	CLERICAL CHANGE	12/1/65	CC.	D.V.V.	JCS	MM
Ø	ORIGINAL RELEASE FOR PRODUCTION	11/19/65	Ø	D.V.V.		
UNLESS OTHERWISE SPECIFIED DIMENSIONS ARE IN INCHES AND INCLUDE CHEMICALLY APPLIED OR PLATED FINISHES		SCALE DO NOT SCALE				
DECIMALS .X ± .05 .XX ± .01 .XXX ± .005	TOLERANCES	FRACTIONS ± 1/64 ANGLES ± 0° 30'	CODE			

REQ. PER UNIT	USED ON			MS 4819 $\emptyset$
	MODEL	ASS'Y. NO.	DATE	
2	CDN-3		2-4-66	



HOLE	DESCRIPTION	REQ
A	9/64 DIA	2
B	.067 DIA.	2



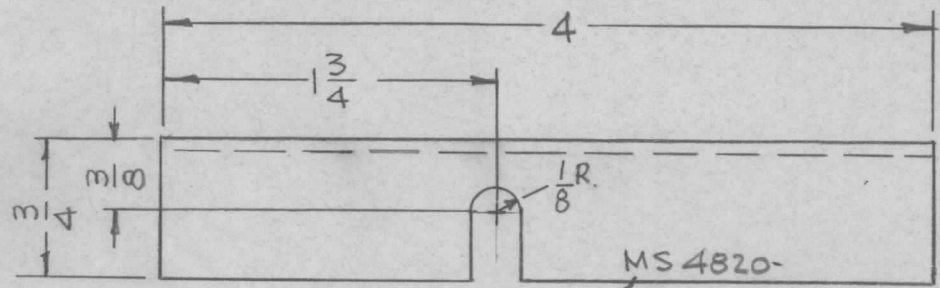
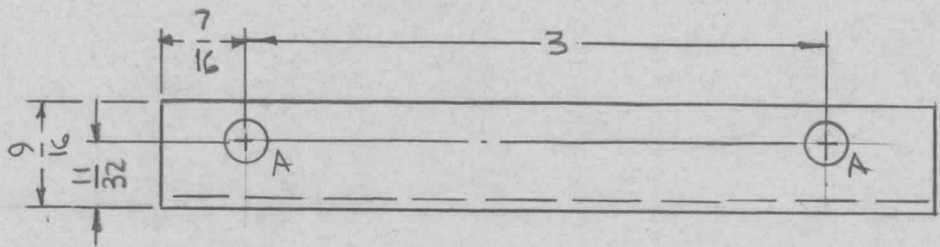
METAL STAMP TMC P/NO. 1/8 HIGH GOTHIC WITH LATEST REV. LETTER

- UNLESS OTHERWISE SPECIFIED:
1. USE MATERIAL THICKNESS FOR MAXIMUM RADIUS ON ALL BENDS
  2. ALL ANGULAR BENDS 90 DEGREES
  3. REMOVE ALL BURRS AND SHARP EDGES
  4. MOUNT INSERTS AFTER FINISHING

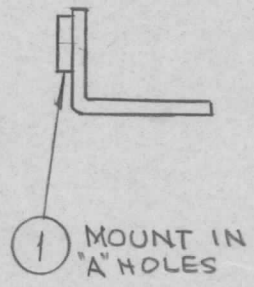
1	2	CU157-2	RET., PC. BOARD	A
2	1	EY100-5	EYELET, MTL	A
REQ. ITEM	PART NO.		DESCRIPTION	SYMBOL
	.063 THK		THE TECHNICAL MATERIEL CORP. MAMARONECK, NEW YORK	
	STOCK SIZE			
	ALUMINUM			BRACKET, MTG, P.C. CARD
	MATERIAL			
	5052-H32		G.D.L.	<i>[Signature]</i>
	TYPE & TEMPER	HEAT TREAT. SPEC.	DRAWN	CHECKED
	8A04 YEL. IRIDITE		<i>[Signature]</i>	<i>[Signature]</i>
	FINISH & SPEC. NO.	ELEC. DES. APP.	MECH. DES. APP.	MS 4819 $\emptyset$

SYM	DESCRIPTION	DATE	CH. NO.	DRAFTS	CHECKER	ENG. APP.
$\emptyset$	ORIGINAL RELEASE	2/3/66				<i>[Signature]</i>
UNLESS OTHERWISE SPECIFIED DIMENSIONS ARE IN INCHES AND INCLUDE CHEMICALLY APPLIED OR PLATED FINISHES		SCALE 1:1				
DECIMALS .X $\pm$ .05 .XX $\pm$ .01 .XXX $\pm$ .005	TOLERANCES	FRACTIONS $\pm$ 1/64 ANGLES $\pm$ 0° 30'	CODE A			

REQ. PER UNIT	USED ON			MS4820	Ø
	MODEL	ASS'Y. NO.	DATE		
1	HVRB-2		11-22-65		



MS 4820-  
 MARK TMC PART NO., 1/8 HIGH GOTHIC W/LATEST REV. LETTER.



HOLES:  
 A-.221-.224 DIA. (2REQ.)

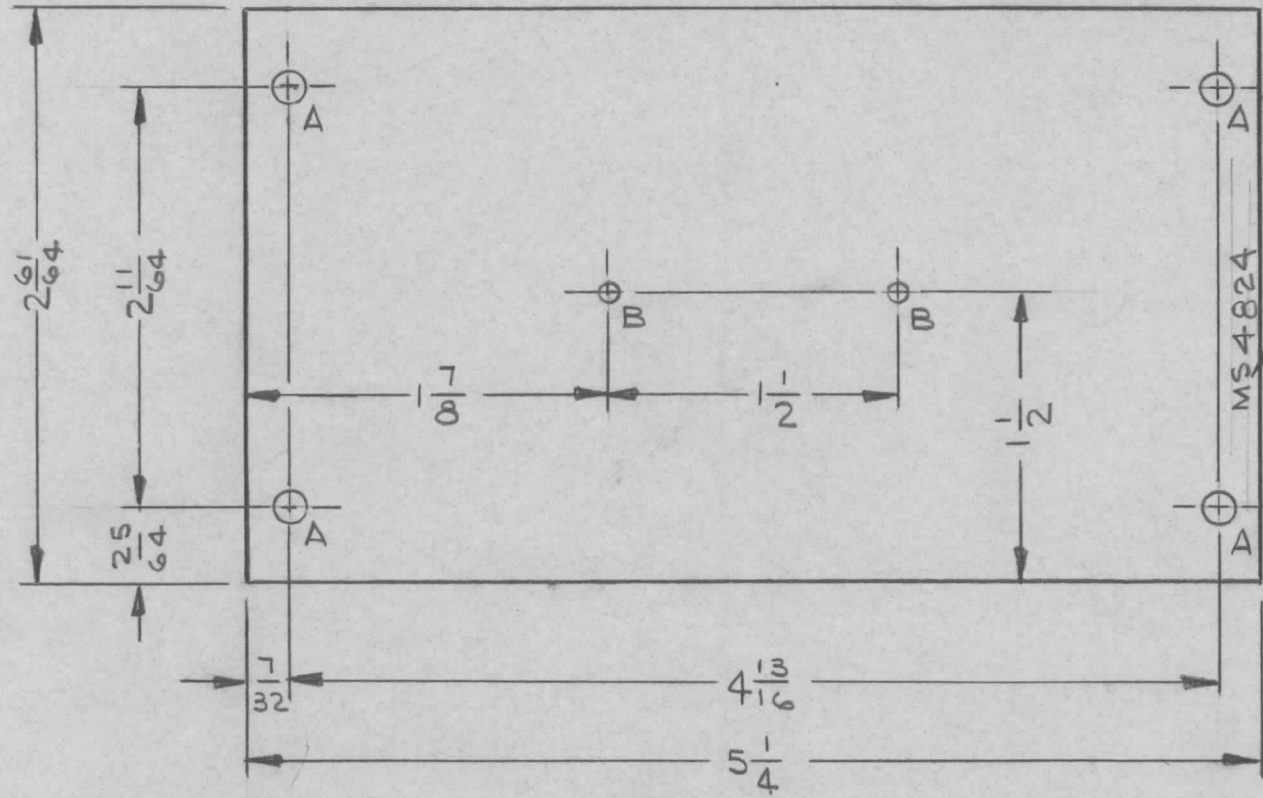
- UNLESS OTHERWISE SPECIFIED:
1. USE MATERIAL THICKNESS FOR MAXIMUM RADIUS ON ALL BENDS
  2. ALL ANGULAR BENDS 90 DEGREES
  3. REMOVE ALL BURRS AND SHARP EDGES
  4. MOUNT INSERTS AFTER FINISHING

							2	1	NT129-832-4	NUT, PLAIN, SPLINE	A					
							REQ. ITEM	PART NO.		F. BUDETTI	DESCRIPTION	SYMBOL				
							.081 THICK		THE TECHNICAL MATERIEL CORP. MAMARONECK, NEW YORK.							
							ALUMINUM		BRACKET, MTG. RESISTOR BOARD							
							MATERIAL									
							5052-H32									
							TYPE & TEMPER		HEAT TREAT. SPEC.		DRAWN		CHECKED		FINAL APPROVAL	
							S404 YEL. IRIDITE						MS4820		Ø	
							FINISH & SPEC. NO.		ELEC. DES. APP.		MECH. DES. APP.					
UNLESS OTHERWISE SPECIFIED DIMENSIONS ARE IN INCHES AND INCLUDE CHEMICALLY APPLIED OR PLATED FINISHES							SCALE									
							1:1									
DECIMALS .X ± .05 .XX ± .01 .XXX ± .005			FRACTIONS ± 1/64 ANGLES ± 0° 30'			CODE A										
TOLERANCES																

REQ. PER UNIT	USED ON		
	MODEL	ASS'Y. NO.	DATE
1	RTPH-1	A5340	11/29/65
1	RTPH-1	A4345	11/29/65

MS4824  $\emptyset$

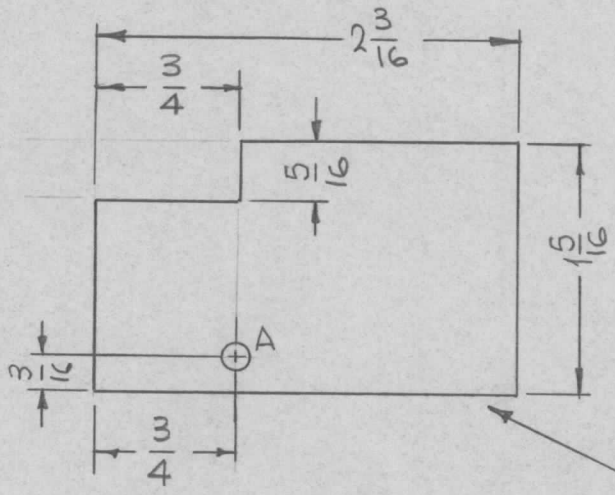
METAL STAMP 1/8 HIGH GOTHIC  
TMC PT. NO. W/LATEST REV. LETTER



HOLE LEGEND		
HOLE	DESCRIPTION	REQ'D
A	13/64 DIA	4
B	1/8 DIA	2

REQ.	ITEM	PART NO.	F.E. EATON	DESCRIPTION	SK3230-6	SYMBOL
		.062 THK	THE TECHNICAL MATERIEL CORP. MAMARONECK, NEW YORK			
		STOCK SIZE	PLATE, END - P.C. BIN			
$\emptyset$	ORIGINAL RELEASE FOR PRODUCTION	4-11-66	$\emptyset$	WFO		
SYM	DESCRIPTION	DATE	CH. NO.	DRAFTS	CHECKER	ENG. APP.
UNLESS OTHERWISE SPECIFIED DIMENSIONS ARE IN INCHES AND INCLUDE CHEMICALLY APPLIED OR PLATED FINISHES		SCALE				
		1/1				
		5052-H32	JL	4/5/66	4/7/66	
		YELLOW IRIDITE S404	DRAWN	CHECKED	FINAL APPROVAL	
DECIMALS .X $\pm$ .05 .XX $\pm$ .01 .XXX $\pm$ .005		FRACTIONS $\pm$ 1/64 ANGLES $\pm$ 0° 30'	TOLERANCES		MS4824	$\emptyset$
		FINISH & SPEC. NO.	ELEC. DES. APP.	MECH. DES. APP.		

REQ. PER UNIT	USED ON			MS4825
	MODEL	ASS'Y. NO.	DATE	
1	RFTA-1		12-7-65	



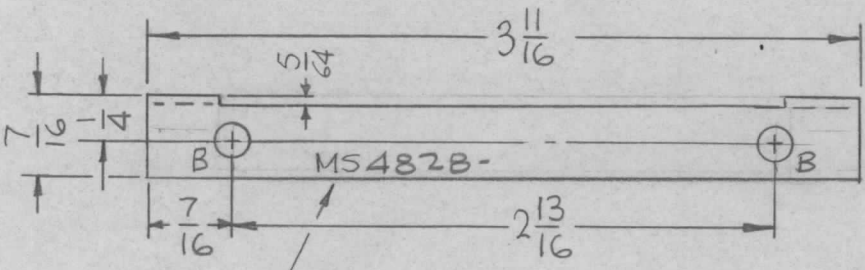
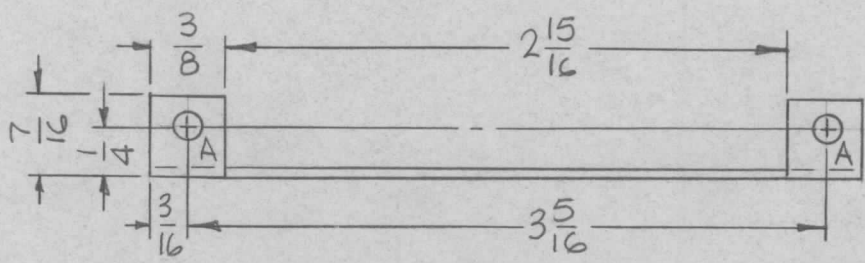
HOLE:  
A-  $\frac{5}{32}$  DIA. (1REQ)

FRONT VIEW

MARK TMC P/N (MS 4825-)  
 $\frac{1}{8}$ " HIGH GOTHIC W/LATEST  
REV. LETTER (ON REAR)

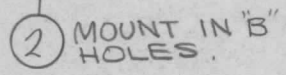
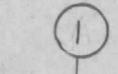
							REQ. ITEM	PART NO.	F. BUDETTI	DESCRIPTION	SYMBOL	
							.064 THICK		THE TECHNICAL MATERIEL CORP.			
							STOCK SIZE		MAMARONECK, NEW YORK			
Ø	ORIGINAL RELEASE	7/15/69		CO			ALUMINUM		PLATE, COVER			
SYM	DESCRIPTION	DATE	CH. NO.	DRAFTS	CHECKER	ENG. APP.	MATERIAL					
UNLESS OTHERWISE SPECIFIED DIMENSIONS ARE IN INCHES AND INCLUDE CHEMICALLY APPLIED OR PLATED FINISHES		SCALE					5052-H32		<i>[Signature]</i>	7/15/69 <i>[Signature]</i>		
DECIMALS .X ± .05 .XX ± .01 .XXX ± .005		FRACTIONS ± 1/64 ANGLES ± 0° 30'		CODE			TYPE & TEMPER		HEAT TREAT. SPEC.		DRAWN	
TOLERANCES		A				S404 YEL. IRIDITE		AVE		A.V.		
						FINISH & SPEC. NO.		ELEC. DES. APP.		MECH. DES. APP.		
										MS4825 Ø		

REQ. PER UNIT	USED ON			MS4828	Ø
	MODEL	ASS'Y. NO.	DATE		
2	GPT-10KLF		12-1-65		



HOLES:  
 A ~ .161-.164 DIA. (2 REQ.)  
 B ~ .191-.194 DIA. (2 REQ.)

MOUNT IN "A" HOLES



UNLESS OTHERWISE SPECIFIED:

1. USE MATERIAL THICKNESS FOR MAXIMUM RADIUS ON ALL BENDS
2. ALL ANGULAR BENDS 90 DEGREES
3. REMOVE ALL BURRS AND SHARP EDGES
4. MOUNT INSERTS AFTER FINISHING

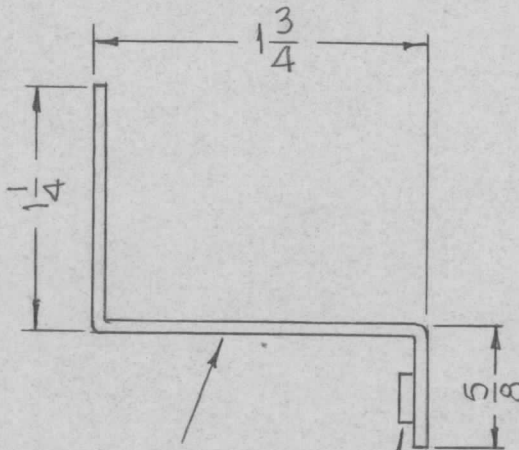
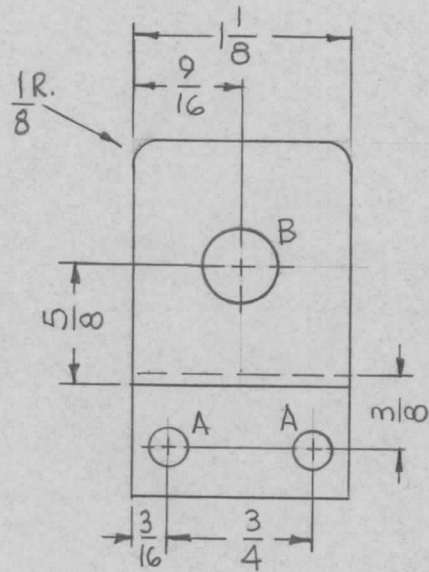
METAL STAMP TMC P/N  
 1/8" HIGH GOTHIC W/LATEST  
 REV. LETTER.

2	2	NT129-632-4	NUT, PLAIN, SPLINE	B
2	1	NT129-440-4	NUT, PLAIN, SPLINE	A

SYM	DESCRIPTION	DATE	CH. NO.	DRAFTS	CHECKER	ENG. APP.	REQ. ITEM	PART NO.	F. BUDETTI	DESCRIPTION	SYMBOL
Ø	ORIGINAL RELEASE	12/8/65									
UNLESS OTHERWISE SPECIFIED DIMENSIONS ARE IN INCHES AND INCLUDE CHEMICALLY APPLIED OR PLATED FINISHES							SCALE		1:1		
DECIMALS .X ± .05 .XX ± .01 .XXX ± .005							TOLERANCES		FRACTIONS ± 1/64 ANGLES ± 0° 30'		
CODE							A		5052-H32		
MATERIAL							ALUMINUM		THE TECHNICAL MATERIEL CORP. MAMARONECK, NEW YORK		
FINISH & SPEC. NO.							S404 YEL IRIDITE		BRACKET, MTG. RESISTOR BOARD		
ELEC. DES. APP.							MECH. DES. APP.		DRAWN		
ELEC. DES. APP.							MECH. DES. APP.		CHECKED		
ELEC. DES. APP.							MECH. DES. APP.		FINAL APPROVAL		
ELEC. DES. APP.							MECH. DES. APP.		MS4828 Ø		



REQ. PER UNIT	USED ON			MS4829	Ø
	MODEL	ASS'Y. NO.	DATE		
1	VLLA-1		12-3-65		



METAL STAMP TMC P/N (MS4829) 1/8" HIGH GOTHIC W/LATEST REV. LETTER.

1 MOUNT IN "A" HOLES

HOLES:  
A ~ .191-.194 DIA. (2REQ)  
B ~ 3/8 DIA. (1REQ)

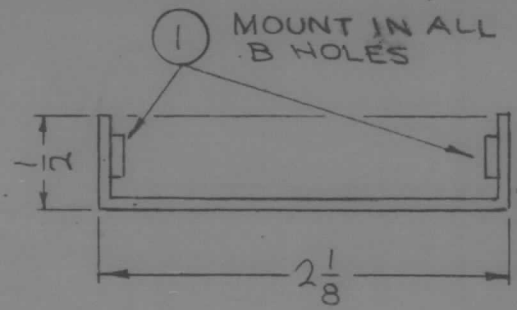
UNLESS OTHERWISE SPECIFIED:

1. USE MATERIAL THICKNESS FOR MAXIMUM RADIUS ON ALL BENDS
2. ALL ANGULAR BENDS 90 DEGREES
3. REMOVE ALL BURRS AND SHARP EDGES
4. MOUNT INSERTS AFTER FINISHING

REF: LD2027

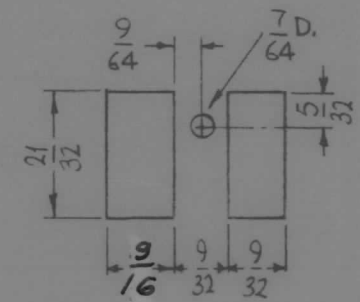
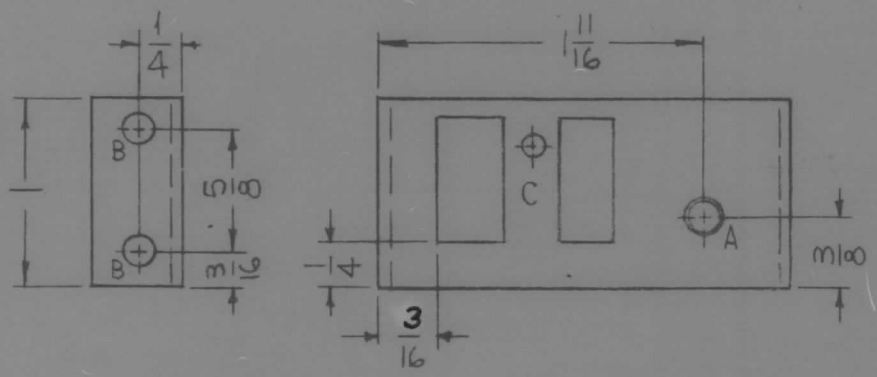
							2	1	NT129-632-4	NUT, PLAIN, SPLINE	A
							REQ. ITEM		PART NO.	F. BUDETTI DESCRIPTION	SYMBOL
									.064 THICK	THE TECHNICAL MATERIEL CORP. MAMARONECK, NEW YORK	
									STOCK SIZE		
									ALUMINUM	BRACKET, MTG. POT	
									MATERIAL		
									5052-H32		
									TYPE & TEMPER	HEAT TREAT. SPEC.	DRAWN
									5404 YEL. IRIDITE		CHECKED
									FINISH & SPEC. NO.	ELEC. DES. APP.	MECH. DES. APP.
											MS4829
											Ø

REQ. PER UNIT	USED ON			MS4832 $\emptyset$
	MODEL	ASS'Y. NO.	DATE	
1	KIT-270	AX 619	10 DEC 65	



METAL STAMP  
TMC PART NO.  
(MS4832-) 1/8 HIGH  
GOTHIC W/LATEST  
REV. LETTER.

HOLES	DESCRIPTION	REQ.
A	.159±.002 BREAK TOP EDGES ONLY	1
B	.161-.164 DIA.	3
C	SEE DETAIL	1



C-DETAIL

UNLESS OTHERWISE SPECIFIED:

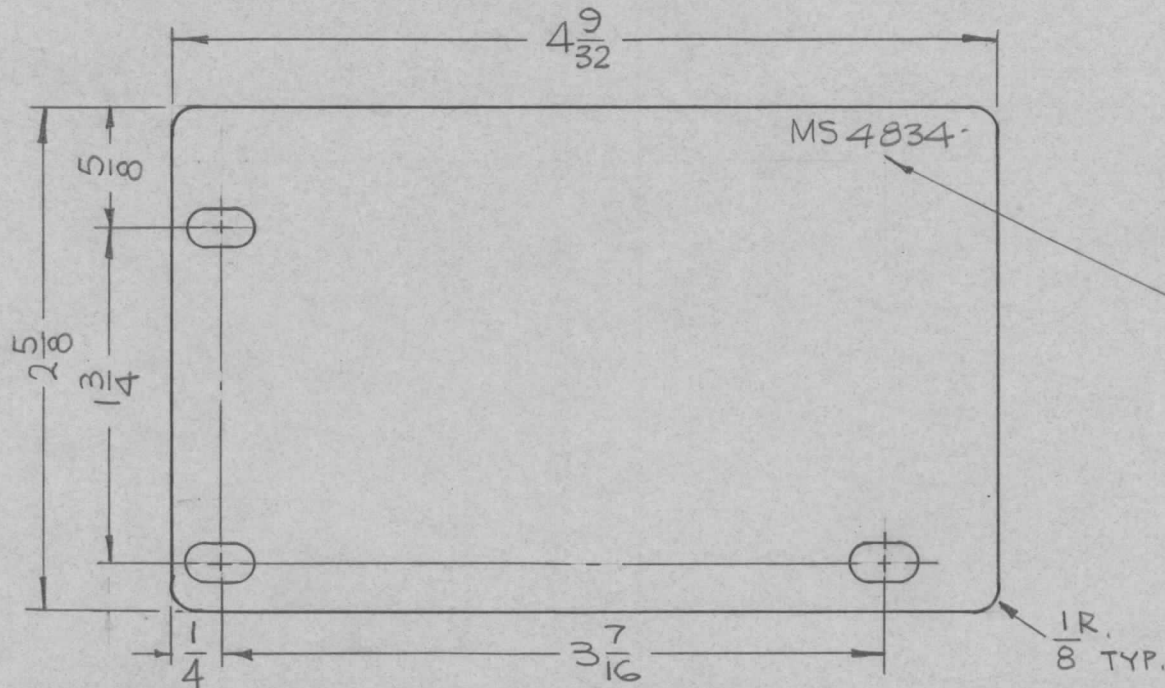
1. USE MATERIAL THICKNESS FOR MAXIMUM RADIUS ON ALL BENDS
2. ALL ANGULAR BENDS 90 DEGREES
3. REMOVE ALL BURRS AND SHARP EDGES
4. MOUNT INSERTS AFTER FINISHING

REF: LD2032

3	1	NT129-440-4	NUT, PLAIN, SPLINE	B
REQ. ITEM	PART NO.		BUDETTI DESCRIPTION	SYMBOL
.064 THICK			THE TECHNICAL MATERIEL CORP.	
STOCK SIZE			MAMARONECK, NEW YORK	
ALUMINUM			BRACKET, MTG. RELAY	
MATERIAL				
5052-H32			B6m	JCS
TYPE & TEMPER			CHECKED	FINAL APPROVAL
HEAT TREAT. SPEC.				
5404 YEL. IRIDITE			MS4832 $\emptyset$	
FINISH & SPEC. NO.			ELEC. DES. APP.	MECH. DES. APP.

$\emptyset$	ORIGINAL RELEASE FOR PRODUCTION	2/10/65	M	Jc		
SYM	DESCRIPTION	DATE	CH. NO.	DRAFTS	CHECKER	ENG. APP.
UNLESS OTHERWISE SPECIFIED DIMENSIONS ARE IN INCHES AND INCLUDE CHEMICALLY APPLIED OR PLATED FINISHES		SCALE	1:1			
DECIMALS .X ± .05 .XX ± .01 .XXX ± .005	TOLERANCES	FRACTIONS ± 1/64 ANGLES ± 0° 30'	CODE	A		

REQ. PER UNIT	USED ON			MS 4834 $\emptyset$
	MODEL	ASS'Y. NO.	DATE	
1	RFTA-1		9-8-65	



HOLES:  
 $\frac{3}{16} \times \frac{3}{8}$  SLOTS 3 REQ.

MARK TMC PART NO.  
 $\frac{1}{8}$  HIGH GOTHIC W/LATEST  
 REV. LETTER.

REQ.	ITEM	PART NO.	F. BUDETTI DESCRIPTION				SYMBOL
		.064 THICK	THE TECHNICAL MATERIEL CORP.				
		STOCK SIZE	MAMARONECK. NEW YORK				
		ALUMINUM	SHIM, SWITCH BRACKET				
		MATERIAL					
		5052-H32	DRAWN	CHECKED	FINAL APPROVAL		
		TYPE & TEMPER					
		HEAT TREAT. SPEC.					
		5404-IRIDITE			MS4834 $\emptyset$		
		FINISH & SPEC. NO.	ELEC. DES. APP.	MECH. DES. APP.			

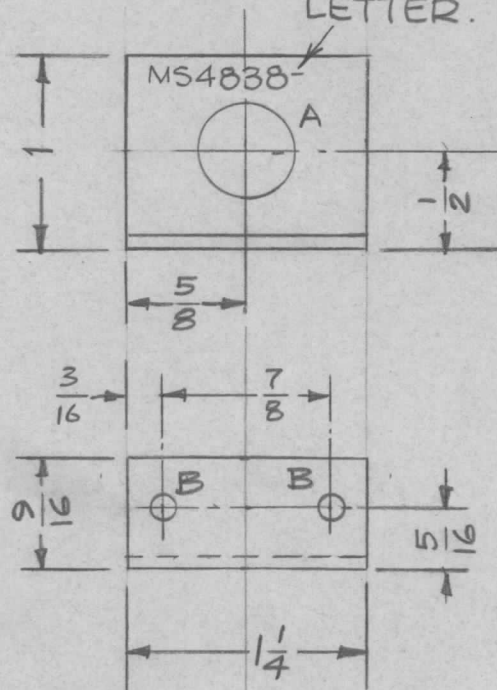
  

UNLESS OTHERWISE SPECIFIED DIMENSIONS ARE IN INCHES AND INCLUDE CHEMICALLY APPLIED OR PLATED FINISHES	SCALE 1:1	DATE 2/15/66	CH. NO.	DRAFTS	CHECKER HLO	ENG. APP.	
DECIMALS .X $\pm$ .05 .XX $\pm$ .01 .XXX $\pm$ .005	FRACTIONS $\pm$ 1/64 ANGLES $\pm$ 0° 30'	TOLERANCES	CODE A				

REQ. PER UNIT	USED ON		
	MODEL	ASS'Y. NO.	DATE
1	STR-2C		

MS4838  $\emptyset$

MARK TMC PT. NO.  
1/8 HIGH GOTHIC  
W/LATEST REV.  
LETTER.



A -  $\frac{1}{2} D$  1 REQ

B -  $\frac{11}{64} D$  2 REQ

REF: LD2038

REQ.	ITEM	PART NO.	DESCRIPTION	SYMBOL
		.064	THE TECHNICAL MATERIEL CORP. MAMARONECK. NEW YORK	
		STOCK SIZE		
		ALUM.	BRKT, MTG, SW	
		MATERIAL		
		5052-H32	16 12/16/65	
		TYPE & TEMPER	CHECKED	FINAL APPROVAL
		HEAT TREAT. SPEC.		
		S404 IRIDITE		MS4838 $\emptyset$
		FINISH & SPEC. NO.	ELEC. DES. APP.	MECH. DES. APP.

$\emptyset$  ORIG. RELEASE 12/20/65  $\emptyset$  UO

UNLESS OTHERWISE SPECIFIED  
DIMENSIONS ARE IN INCHES AND INCLUDE  
CHEMICALLY APPLIED OR PLATED FINISHES

SCALE

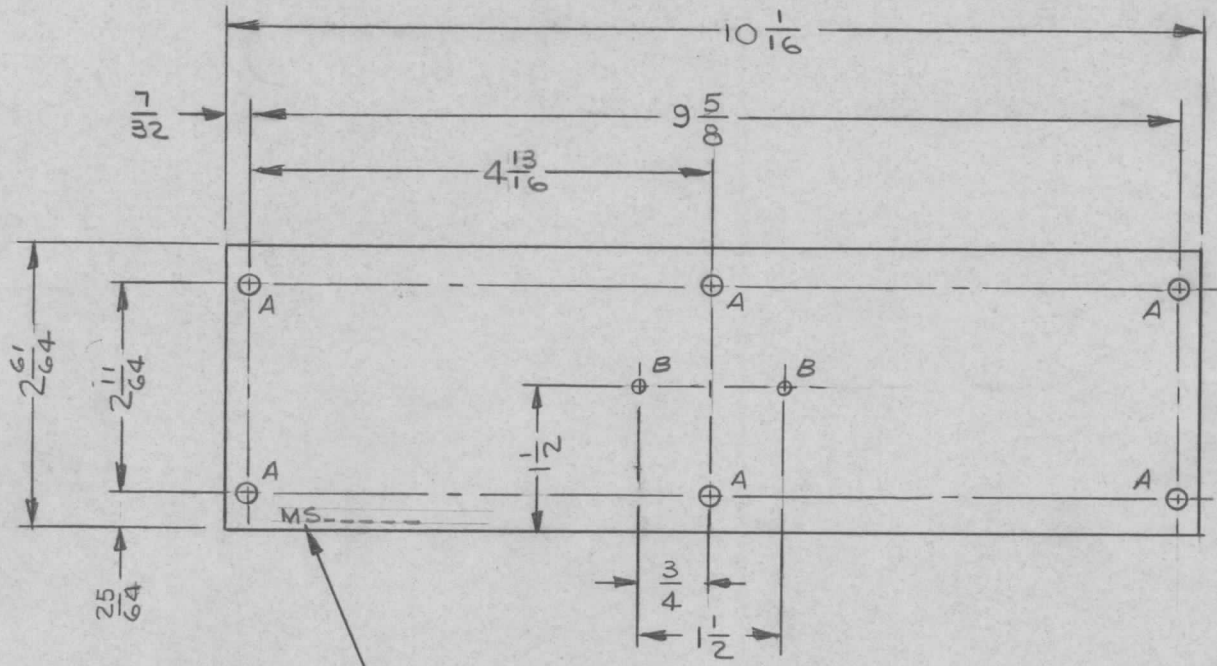
DECIMALS .X  $\pm$  .05  
.XX  $\pm$  .01  
.XXX  $\pm$  .005

FRACTIONS  $\pm$  1/64  
ANGLES  $\pm$  0° 30'

TOLERANCES

CODE

REQ. PER UNIT	USED ON		MS4844 $\emptyset$
	MODEL	DATE	
2	RTIH-1	11/23/65	

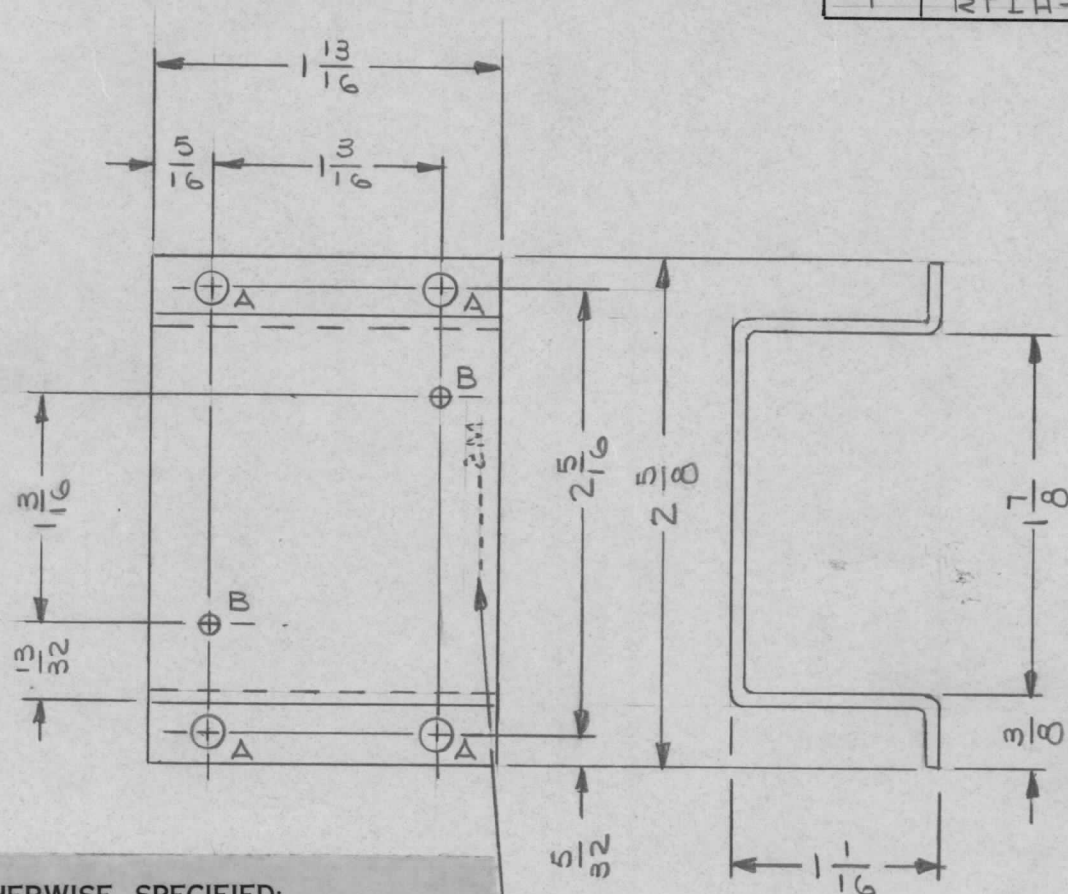


MARK 1/8 HIGH GOTHIC,  
TMC PT. NO. W/LATEST REV. LETTER

HOLE LEGEND		
HOLE	DESCRIPTION	REQ'D
A	13/64 DIA	6
B	1/8 DIA	2

							REQ. ITEM	PART NO.	F.E. EATON	DESCRIPTION	SK3229-8	SYMBOL	
								.067 THK	THE TECHNICAL MATERIEL CORP. MAMARONECK, NEW YORK				
								STOCK SIZE	PLATE, END - P.C. CARD BIN				
								ALUMINUM					
$\emptyset$	ORIGINAL RELEASE	4/18/66	M	Jc				MATERIAL					
SYM	DESCRIPTION	DATE	CH. NO.	DRAFTS	CHECKER	ENG. APP.		5052-H32	JL				
UNLESS OTHERWISE SPECIFIED DIMENSIONS ARE IN INCHES AND INCLUDE CHEMICALLY APPLIED OR PLATED FINISHES		SCALE											
		1/2											
DECIMALS	TOLERANCES	FRACTIONS	CODE										
.X $\pm$ .05		$\pm$ 1/64											
.XX $\pm$ .01		ANGLES											
.XXX $\pm$ .005		$\pm$ 0° 30'											
		YELLOW IRIDITE PER S 404		HEAT TREAT. SPEC.		DRAWN		CHECKED		FINAL APPROVAL			
		FINISH & SPEC. NO.		ELEC. DES. APP.		MECH. DES. APP.		MS4844 $\emptyset$					

REQ. PER UNIT	USED ON			MS4845	Ø
	MODEL	ASS'Y. NO.	DATE		
1	RTIH-1		11/22/65		



HOLE LEGEND		
HOLE	DESCRIPTION	REQ'D
A	11/64 DIA	4
B	9/64 DIA	2

UNLESS OTHERWISE SPECIFIED:

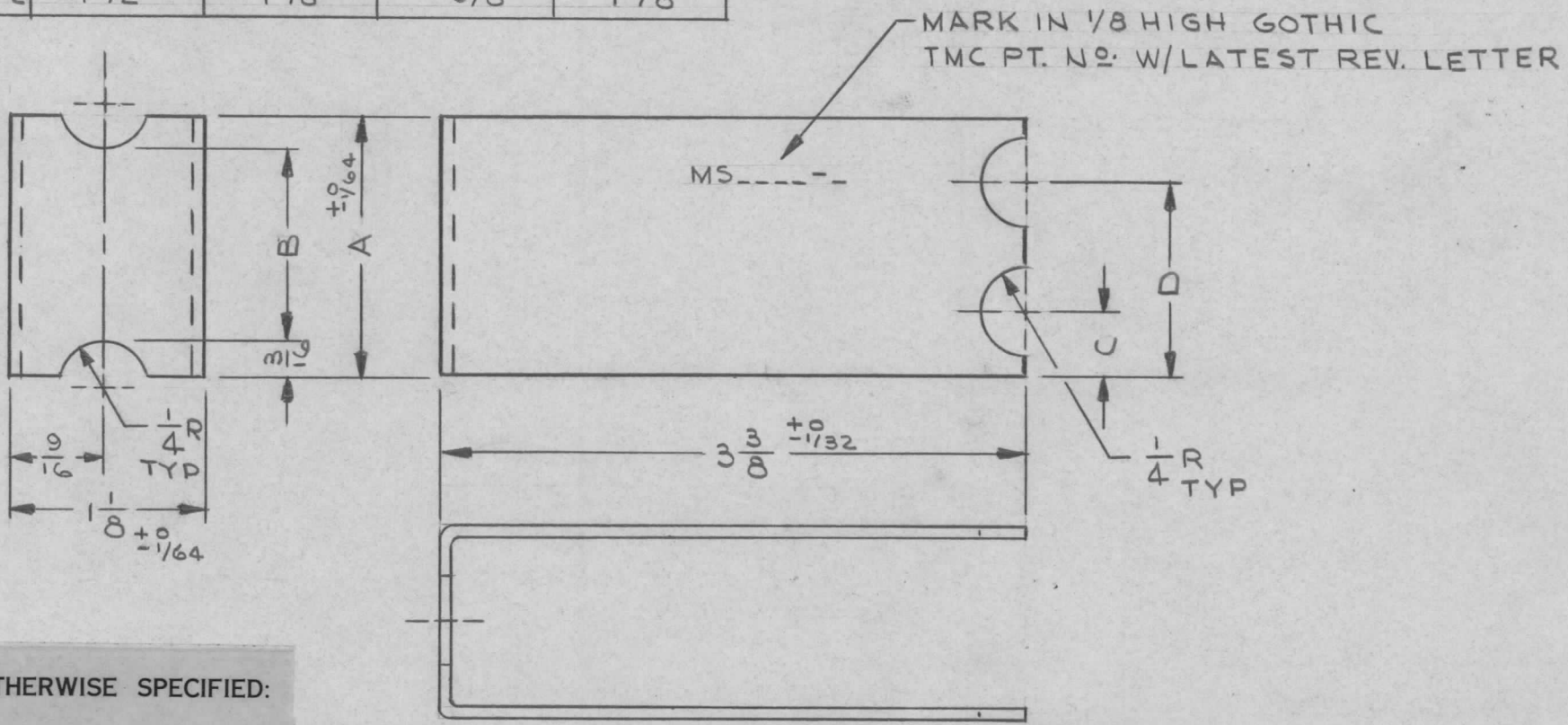
1. USE MATERIAL THICKNESS FOR MAXIMUM RADIUS ON ALL BENDS
2. ALL ANGULAR BENDS 90 DEGREES
3. REMOVE ALL BURRS AND SHARP EDGES

MARK 1/8 HIGH GOTHIC, (ON INSIDE) TMC PT. NO. W/LATEST REV. LETTER

						REQ. ITEM	PART NO.	F.E. EATON DESCRIPTION SK 3229-7		SYMBOL	
						.064 THK		THE TECHNICAL MATERIEL CORP. MAMARONECK. NEW YORK			
						STOCK SIZE		MTG BRACKET-F.W. RECTIFIER			
Ø	ORIGINAL RELEASE	4/18/66	M	Jc	gfb	ALUMINUM					
SYM	DESCRIPTION	DATE	CH. NO.	DRAFTS	CHECKER	ENG. APP.	MATERIAL				
UNLESS OTHERWISE SPECIFIED DIMENSIONS ARE IN INCHES AND INCLUDE CHEMICALLY APPLIED OR PLATED FINISHES		SCALE 1/1				5052-H32		J.L.	gfb	F. E. Eaton 4/18/66	
DECIMALS .X ± .05 .XX ± .01 .XXX ± .005	TOLERANCES	FRACTIONS ± 1/64 ANGLES ± 0° 30'	CODE			TYPE & TEMPER YELLOW IRIDITE PER S404	HEAT TREAT. SPEC.	DRAWN	CHECKED	FINAL APPROVAL	
							FINISH & SPEC. NO.	ELEC. DES. APP.	MECH. DES. APP.	MS4845 Ø	

TMC PART NO.	DIMENSIONS			
	-A-	-B-	-C-	-D-
MS4847-1	3/4	3/8	3/8	—
MS4847-2	1 1/2	1 1/8	3/8	1 1/8

REQ. PER UNIT	USED ON		MS 4847	Ø
	MODEL	ASS'Y. NO.		
	RTIH-1		12/27/65	



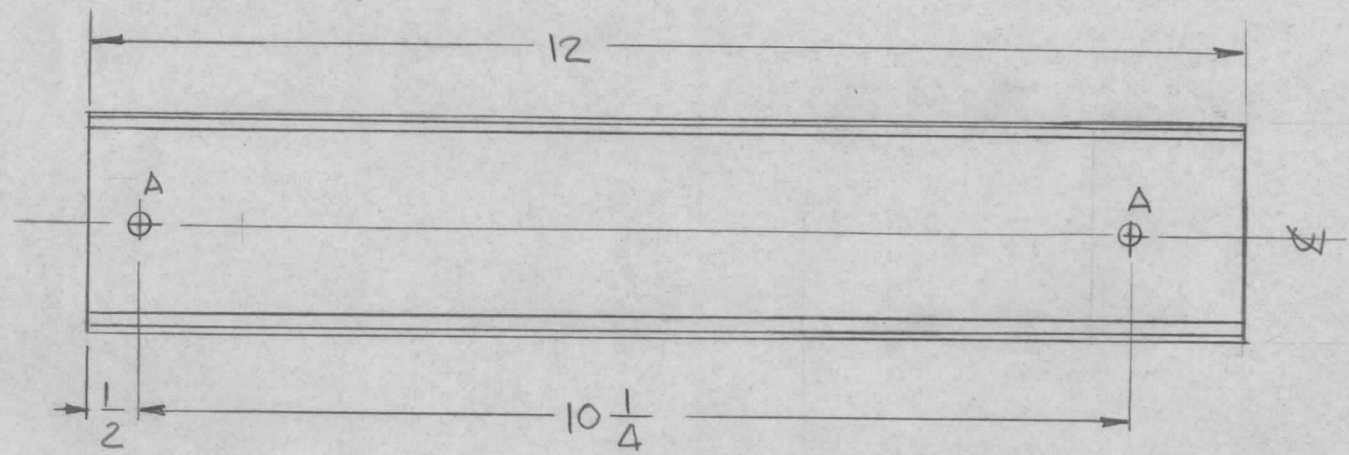
UNLESS OTHERWISE SPECIFIED:

1. USE MATERIAL THICKNESS FOR MAXIMUM RADIUS ON ALL BENDS
2. ALL ANGULAR BENDS 90 DEGREES
3. REMOVE ALL BURRS AND SHARP EDGES

SYM	DESCRIPTION	DATE	CH. NO.	DRAFTS	CHECKER	ENG. APP.	REQ. ITEM	PART NO.	F.E.EATON	DESCRIPTION	SYMBOL
Ø	ORIGINAL RELEASE	4/18/66			Jc	CB	.064 THK			THE TECHNICAL MATERIEL CORP.	
							STOCK SIZE			MAMARONECK, NEW YORK	
							ALUMINUM			SPACER - READOUT	
							MATERIAL				
							5052-H32		J.L.	CB	
							TYPE & TEMPER	HEAT TREAT. SPEC.	DRAWN	CHECKED	FINAL APPROVAL
							YELLOW IRIDITE S404				
							BLK SEMI-GLOSS ENAMEL S197				
							FINISH & SPEC. NO.		ELEC. DES. APP.	MECH. DES. APP.	
											MS 4847
											Ø

HOLE HOLE  
 A = A = 9/64 DIA (2REQ)

REQ. PER UNIT	USED ON			MS4849	B
	MODEL	ASS'Y. NO.	DATE		
1	TDC-7		1-14-65		



MARK  
 TMC PART/NO  
 1/8 HIGH GOTHIC  
 W/LATEST REV.  
 LETTER

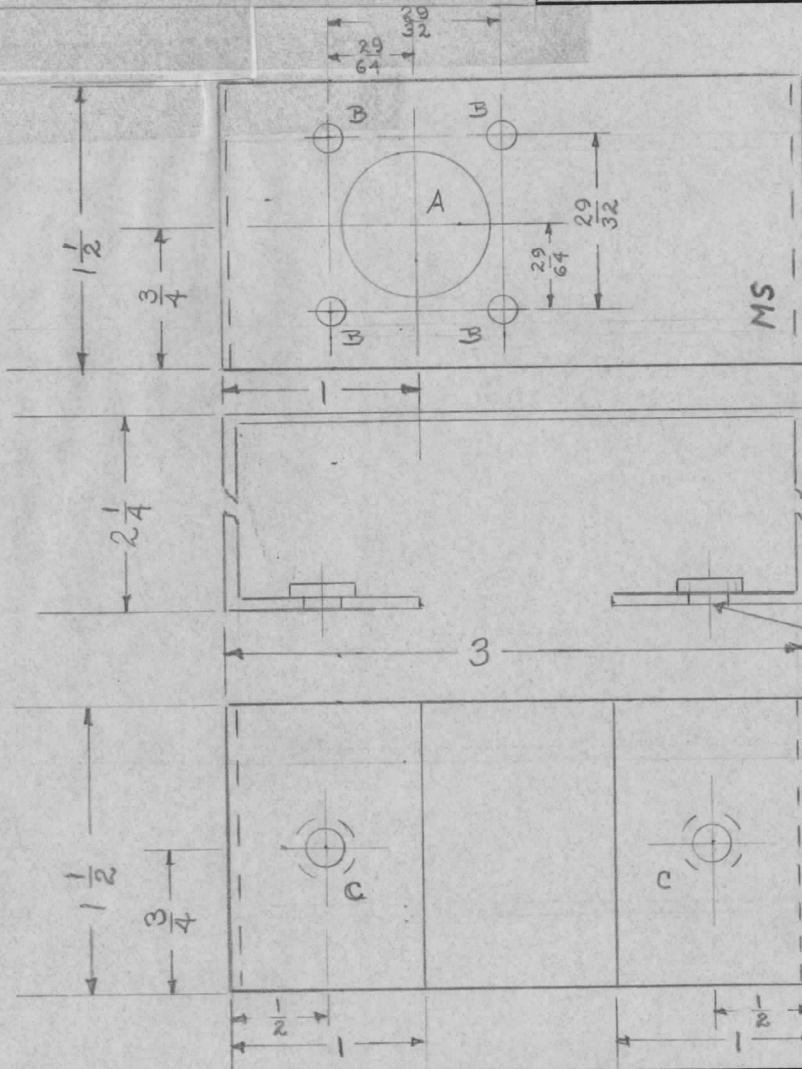
REF: PO 160

B	MODEL WAS -5, A WAS 221-224, ITEM 1 DELETED	11-28-66	17322	WHO	QC/P	
A	ITEM 1 ADDED, HOLES WERE 1/2 DIA	5-18-66	16251	SRZ	QC/P	
Ø	ORIGINAL RELEASE	1/17/66	Ø			
SYM	DESCRIPTION	DATE	CH. NO.	DRAFTS	CHECKER	ENG. APP.
UNLESS OTHERWISE SPECIFIED DIMENSIONS ARE IN INCHES AND INCLUDE CHEMICALLY APPLIED OR PLATED FINISHES		SCALE DO NOT SCALE				
DECIMALS .X ± .05 .XX ± .01 .XXX ± .005	TOLERANCES	FRACTIONS ± 1/64 ANGLES ± 0° 30'	CODE A			

REQ. ITEM	PART NO.	DESCRIPTION	SYMBOL
		THE TECHNICAL MATERIEL CORP. MAMARONECK, NEW YORK	A
STOCK SIZE		CONDUIT, RACE WAY	
MATERIAL			
TYPE & TEMPER	HEAT TREAT. SPEC.	G.O.D.L	1/17/66
FINISH & SPEC. NO.		DRAWN	CHECKED
		ELEC. DES. APP.	MECH. DES. APP.
		MS4849	B



REQ. PER UNIT	USED ON			MS 4852	Ø
	MODEL	ASS'Y. NO.	DATE		
1	KIT 180		13 JAN 66		



A -  $\frac{3}{4}$  DIA. — 1 REQ.  
 B -  $\frac{9}{64}$  DIA. — 4 "  
 C - .191-.194 DIA. — 2 "

STAMP TMC PIN W/LATEST REVISION LETTER.  $\frac{1}{8}$  HIGH GOTHIC.

① MOUNT AFTER FINISHING

UNLESS OTHERWISE SPECIFIED DIMENSIONS ARE IN INCHES AND INCLUDE CHEMICALLY APPLIED OR PLATED FINISHES		
DECIMALS	TOLERANCES	FRACTIONS
.X ± .05		± 1/64
.XX ± .01		ANGLES
.XXX ± .005		± 0° 30'

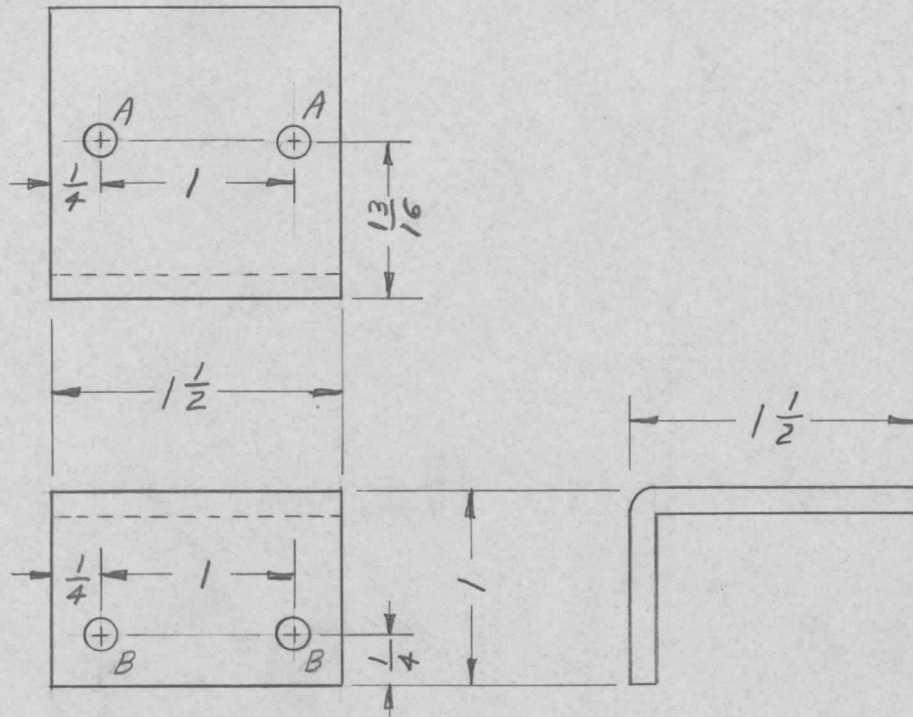
CUT HERE GUARANTEED 2-66

REF: LD 2045  
 ITEM 1 2 REQ'D NT 129-632-4 C

ISSUE	ITEM	CHANGED FROM	DATE	CH. NO.	DRAFTS	CHECKER	ENG. APP.	REQ. ITEM	PART NO.	DESCRIPTION	SYMBOL				
									.064	THE TECHNICAL MATERIEL CORP. MAMARONECK, NEW YORK					
									STOCK SIZE						
									ALUM.	BRKT PA FILTER, CONNECTOR					
									MATERIAL						
		ORIGINAL RELEASE	2/2/66						5052-H32	J.S.	J.S. 2/2/66				
TOLERANCES			SCALE:							DRAWN	CHECKED	FINAL APPROVAL			
DEC. DIM. ±			MAXIMUM ALLOWABLE TOLERANCES HAVE BEEN DETERMINED AND ANY DEVIATIONS WILL BE CAUSE FOR REJECTION. REMOVE ALL BURRS AND SHARP EDGES												
FRAC. DIM. ±															
ANGULAR DIM. ±															
									TYPE & TEMPER	HEAT TREAT. SPEC.					
									S404 YEL. IRIDITE						
									FINISH & SPEC. NO.	ELEC. DES. APP.	MECH. DES. APP.				
											MS 4852				

REQ. PER UNIT	USED ON			MS4857 $\emptyset$
	MODEL	ASS'Y. NO.	DATE	
1	KIT 180			

STAMP TMC PIN  
W/ LATEST REVISION LETTER.



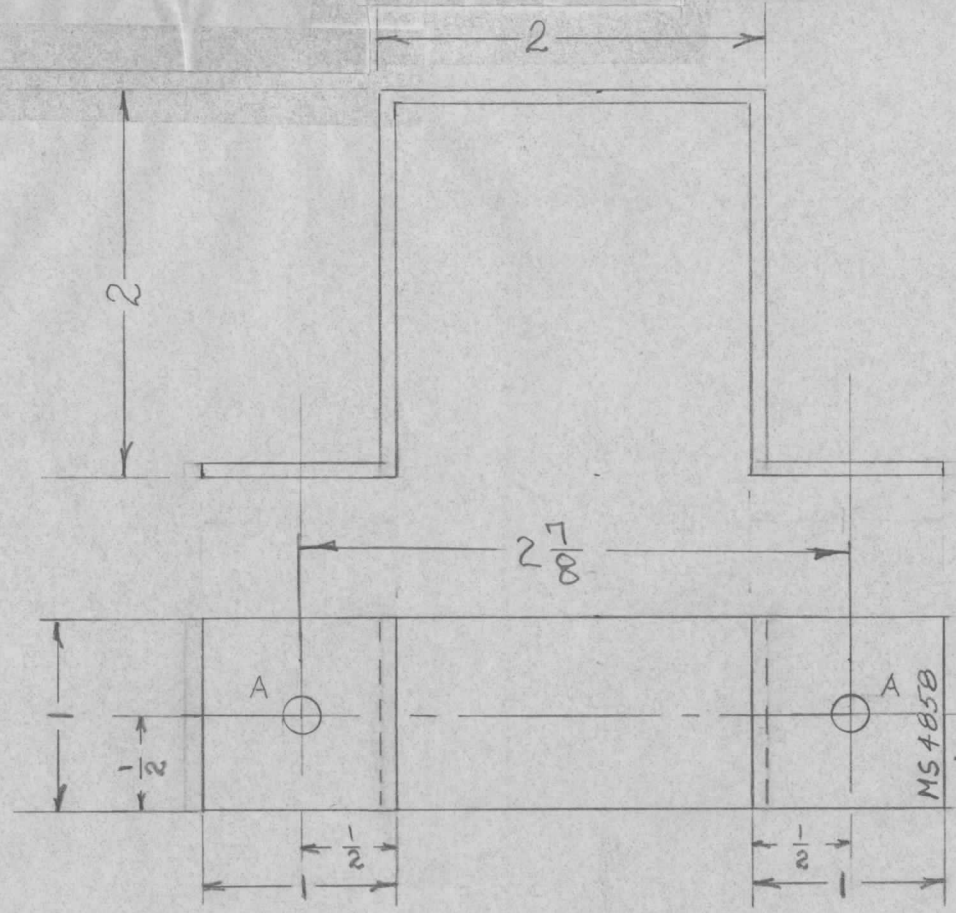
UNLESS OTHERWISE SPECIFIED:

1. USE MATERIAL THICKNESS FOR MAXIMUM RADIUS ON ALL BENDS
2. ALL ANGULAR BENDS 90 DEGREES
3. REMOVE ALL BURRS AND SHARP EDGES

A ~  $\frac{9}{64}$  DIA. 2 REQ.      B ~  $\frac{13}{64}$  DIA. 2 REQ.

REQ. ITEM	PART NO.	DESCRIPTION	SYMBOL
$\emptyset$		THE TECHNICAL MATERIEL CORP. MAMARONECK, NEW YORK	
ORIGINAL RELEASE	2/2/66	STOCK SIZE	
XI	CHG 2 "A" Holes to "B" Holes	ALUMINUM 5052 H32	BRACKET TB MTG.
SYM	DESCRIPTION	MATERIAL	
UNLESS OTHERWISE SPECIFIED DIMENSIONS ARE IN INCHES AND INCLUDE CHEMICALLY APPLIED OR PLATED FINISHES		SCALE	
DECIMALS .X $\pm$ .05 .XX $\pm$ .01 .XXX $\pm$ .005	FRACTIONS $\pm$ 1/64 ANGLES $\pm$ 0° 30'	CODE	
TOLERANCES			
		TYPE & TEMPER	HEAT TREAT. SPEC.
		5404 YEL IRIDITE	
		FINISH & SPEC. NO.	ELEC. DES. APP. MECH. DES. APP.
			MS4857 $\emptyset$

REQ. PER UNIT	USED ON			MS 4858 $\phi$
	MODEL	ASS'Y. NO.	DATE	
1	KIT 180		12-3-65	



A -  $\frac{11}{64}$  DIA. — 2 REQ'D


STAMP W/TMC PIN W/LATEST REVISION LETTER  $\frac{1}{8}$  HIGH GOTHIC.

UNLESS OTHERWISE SPECIFIED DIMENSIONS ARE IN INCHES AND INCLUDE CHEMICALLY APPLIED OR PLATED FINISHES		
DECIMALS	TOLERANCES	FRACTIONS
.X $\pm$ .05		$\pm$ 1/64
.XX $\pm$ .01		ANGLES
.XXX $\pm$ .005		$\pm$ 0° 30'

CUT WERE GUARANTEED 2-66

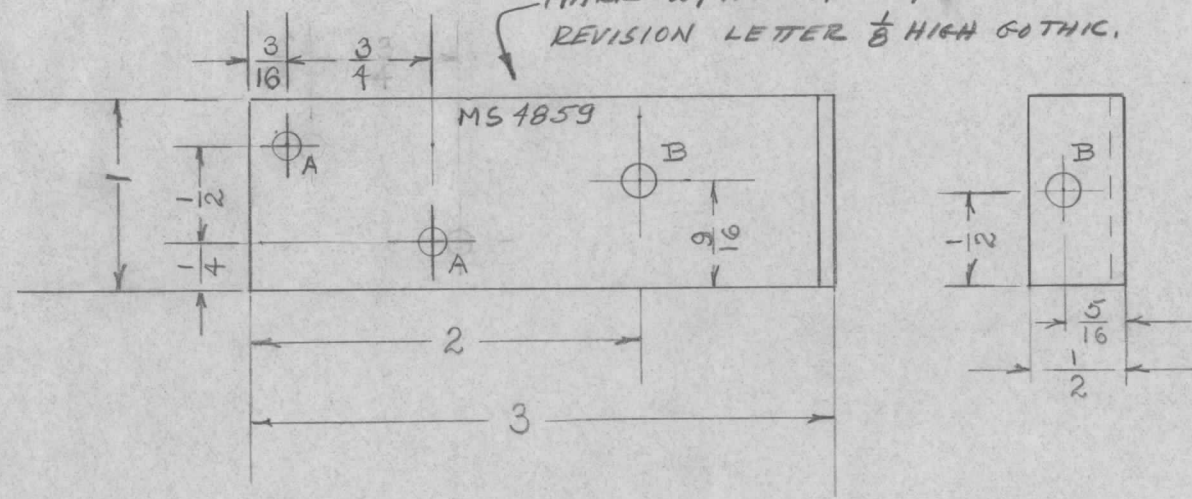
REQ. ITEM	PART NO.	DESCRIPTION	SYMBOL
	.064	THE TECHNICAL MATERIEL CORP. MAMARONECK, NEW YORK	$\phi$
	STOCK SIZE		
	ALUM.	BRKT. AIR DUCT	
	MATERIAL		
ISSUE ITEM	CHANGED FROM	DATE	CH. NO. DRAFTS CHECKER ENG. APP.
	ORIGINAL RELEASE	2/2/66	JLQ
TOLERANCES		SCALE:	
DEC. DIM. $\pm$		MAXIMUM ALLOWABLE TOLERANCES HAVE BEEN DETERMINED AND ANY DEVIATIONS WILL BE CAUSE FOR REJECTION.	
FRAC. DIM. $\pm$		REMOVE ALL BURRS AND SHARP EDGES	
ANGULAR DIM. $\pm$			
	5052-432	DRAWN	CHECKED
	TYPE & TEMPER	HEAT TREAT. SPEC.	
	S404 YEL. IRIDITE		
	FINISH & SPEC. NO.	ELEC. DES. APP.	MECH. DES. APP.
			MS 4858 $\phi$

REQ. PER UNIT	USED ON		
	MODEL	ASS'Y. NO.	DATE
1	KIT 180		12-3-65

MS 4859 

A -  $\frac{1}{8}$  DIA. — 2 REQ'D.  
 B -  $\frac{11}{64}$  DIA. — 2 "


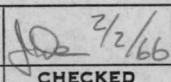
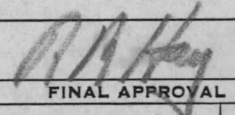
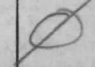
MARK W/ TMC PIN W/ LATEST REVISION LETTER  $\frac{1}{8}$  HIGH GOTHIC.



UNLESS OTHERWISE SPECIFIED DIMENSIONS ARE IN INCHES AND INCLUDE CHEMICALLY APPLIED OR PLATED FINISHES

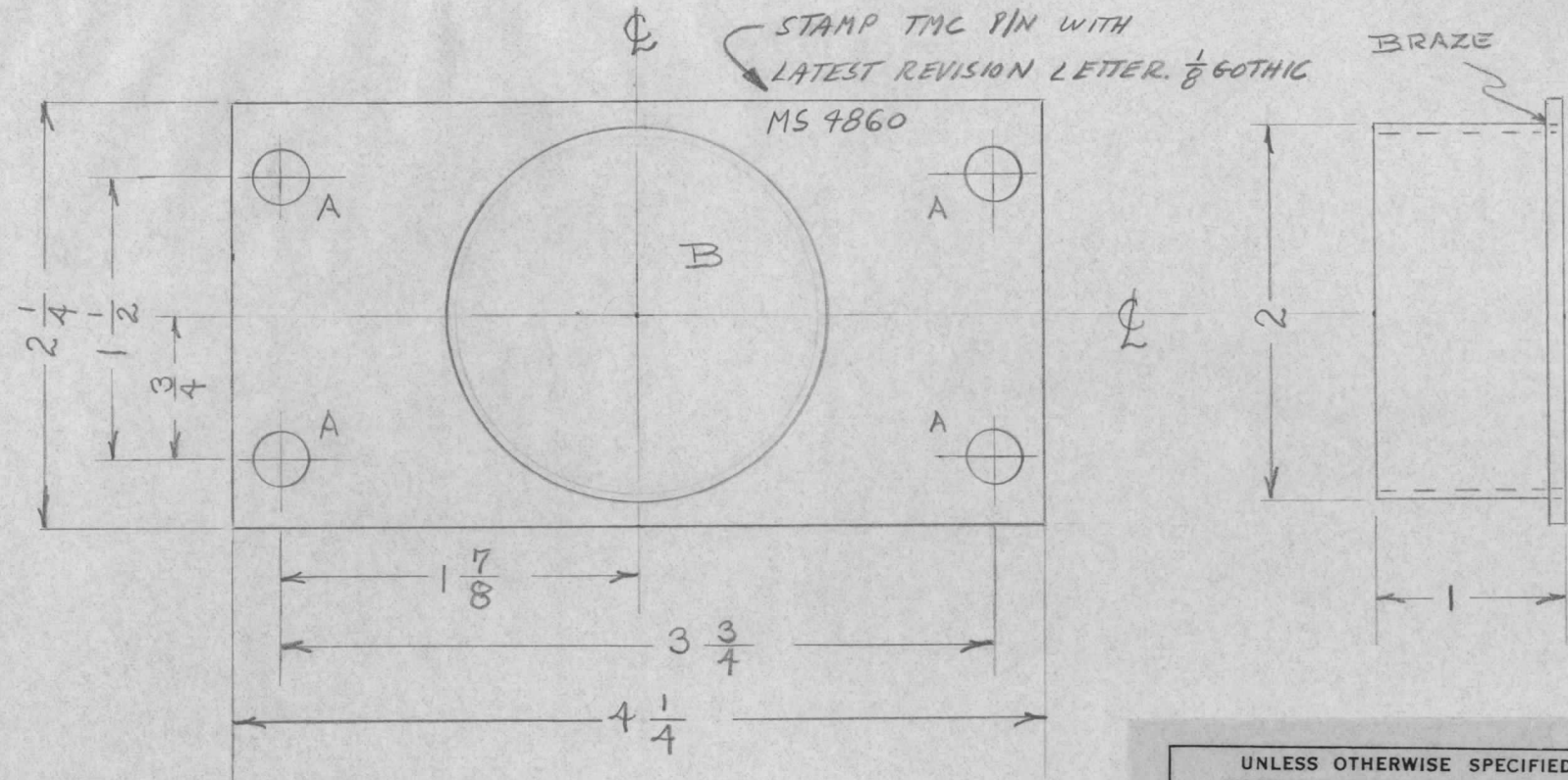
DECIMALS	TOLERANCES	FRACTIONS
.X ± .05		± 1/64
.XX ± .01		ANGLES ± 0° 30'
.XXX ± .005		

CUT HERE GUARANTEED 2-66

ISSUE	ITEM	CHANGED FROM	DATE	CH. NO.	DRAFTS	CHECKER	ENG. APP.	REQ. ITEM	PART NO.	DESCRIPTION	SYMBOL	
									.064	THE TECHNICAL MATERIEL CORP. MAMARONECK, NEW YORK		
									STOCK SIZE			
									ALUM.			
		ORIGINAL RELEASE	2/2/66						MATERIAL	BRKT. PA FIL. FAN INTERLOCK SWITCH		
		TOLERANCES	SCALE:					5052 H32		J.S.  2/2/66		
		DEC. DIM. ±	MAXIMUM ALLOWABLE TOLERANCES HAVE BEEN DETERMINED AND ANY DEVIATIONS WILL BE CAUSE FOR REJECTION.					TYPE & TEMPER	HEAT TREAT. SPEC.	DRAWN	CHECKED	FINAL APPROVAL
		FRAC. DIM. ±	REMOVE ALL BURRS AND SHARP EDGES					S404 YEL. IRIDITE			RJP	MS 4859
		ANGULAR DIM. ±						FINISH & SPEC. NO.	ELEC. DES. APP.	MECH. DES. APP.		

REQ. PER UNIT	USED ON			MS 4860 $\emptyset$
	MODEL	ASS'Y. NO.	DATE	
1	KIT 180			

A -  $\frac{9}{32}$ " DIA. — 4 REQD.  
 B - 2" DIA. — 1 "



S114 - ZINC CHROMATE PRIMER  
 S197 - BLACK ENAM. SEMI-GLOSS

UNLESS OTHERWISE SPECIFIED  
 DIMENSIONS ARE IN INCHES AND INCLUDE  
 CHEMICALLY APPLIED OR PLATED FINISHES

DECIMALS	TOLERANCES	FRACTIONS
.X ± .05		± 1/64
.XX ± .01		ANGLES
.XXX ± .005		± 0° 30'

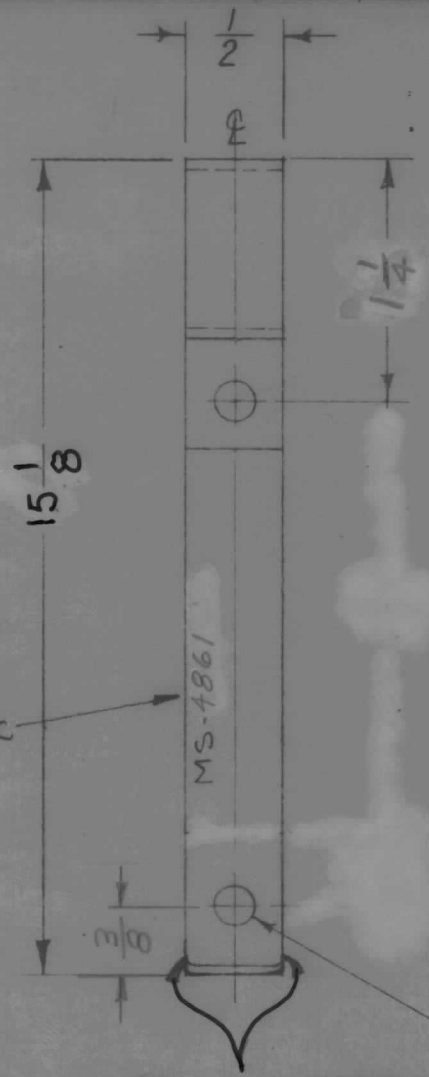
CUT HERE  
 GUARANTEED  
 2-66

REQ. ITEM	PART NO.	DESCRIPTION	SYMBOL
	.062	THE TECHNICAL MATERIEL CORP. MAMARONECK, NEW YORK	
	STOCK SIZE		
	BRASS	BRACKET, HOSE MTC.	
	MATERIAL		
	1/2 HARD	f.s. <i>HO</i> 2/2/66	<i>All Hay</i>
	TYPE & TEMPER	DRAWN	CHECKED
	HEAT TREAT. SPEC.		FINAL APPROVAL
	SEE NOTE	RIP	MS 4860 $\emptyset$
	FINISH & SPEC. NO.	ELEC. DES. APP.	MECH. DES. APP.

TOLERANCES  
 DEC. DIM. ±  
 FRAC. DIM. ±  
 ANGULAR DIM. ±

SCALE:  
 MAXIMUM ALLOWABLE TOLERANCES HAVE BEEN DETERMINED AND ANY DEVIATIONS WILL BE CAUSE FOR REJECTION.  
 REMOVE ALL BURRS AND SHARP EDGES

REQ. PER UNIT	USED ON			MS4861	⊕
	MODEL	ASS'Y. NO.	DATE		
1	KIT 180		2-2-66		

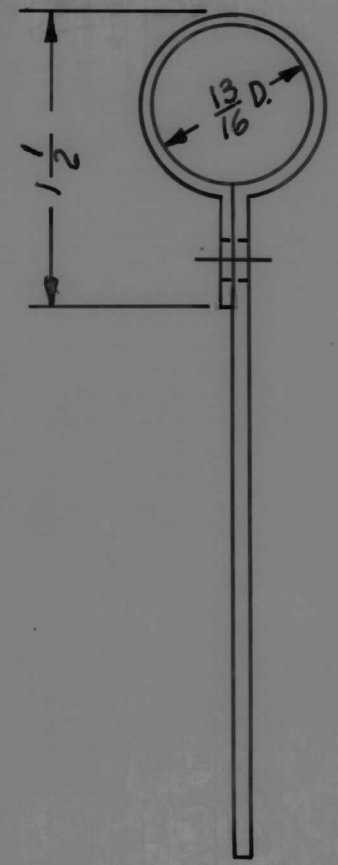


METAL STAMP  
TMC PART NO.  
1/8 HIGH, GOTHIC

MS-4861

ROUND CORNERS

13  
64 D.  
2 REQ.

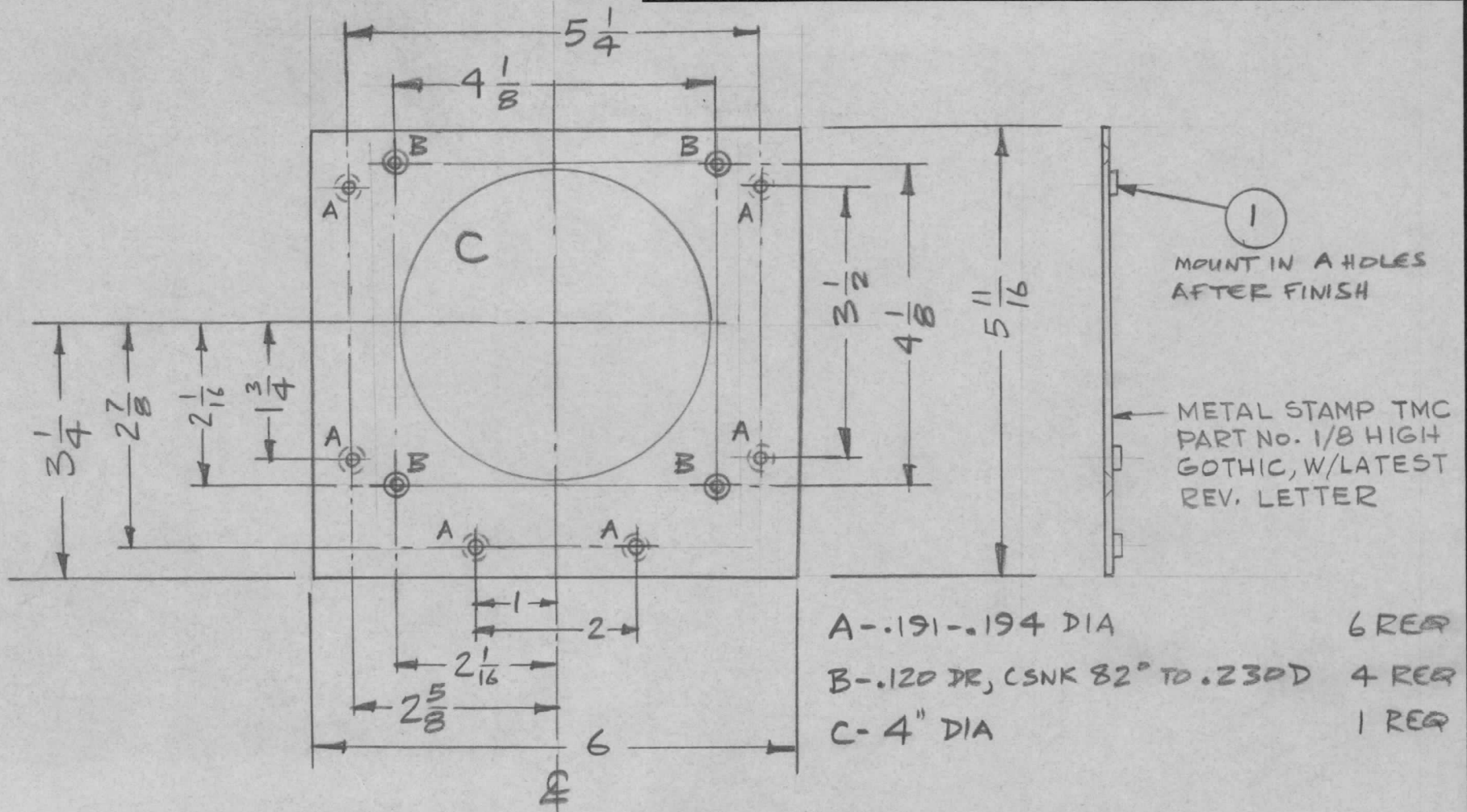


ISSUE	ITEM	CHANGED FROM	DATE	CH. NO.	DRAFTS	CHECKER	ENG. APP.	REQ. ITEM	PART NO.	DESCRIPTION	SYMBOL
								.031		THE TECHNICAL MATERIEL CORP.	
								STOCK SIZE		MAMARONECK, NEW YORK	
⊕		ORIGINAL RELEASE	2/2/66					COPPER		STRAP, CONNECTING, PLATE	
								MATERIAL		METERING CAPACITOR	
								SOFT		EANZA	
								TYPE & TEMPER	HEAT TREAT. SPEC.	DRAWN	CHECKED
								8-245 SILVER PLATE			
								3-423 IRIDITE			
								FINISH & SPEC. NO.		ELEC. DES. APP.	MECH. DES. APP.
										RJP	
											MS4861
											⊕

DEC. DIM. ±  
FRAC. DIM. ± 1/64  
ANGULAR DIM. ±

SCALE:  
MAXIMUM ALLOWABLE TOLERANCES HAVE BEEN DETERMINED AND ANY DEVIATIONS WILL BE CAUSE FOR REJECTION. REMOVE ALL BURRS AND SHARP EDGES

REQ. PER UNIT	USED ON			MS 4869	Ø
	MODEL	ASS'Y. NO.	DATE		
1	TDC-7	A5434	1-17-66		



- A-.191-.194 DIA 6 REQ
- B-.120 DR, CSNK 82° TO .230D 4 REQ
- C-4" DIA 1 REQ

6	1	NT129-632-4	NUT, PLN, SPLINE	A
REQ. ITEM	PART NO.	POSE	DESCRIPTION	SYMBOL
.ØB1		THE TECHNICAL MATERIEL CORP. MAMARONECK, NEW YORK		
ALUMINUM		PLATE, MTS, FAN		
MATERIAL				
5052-H32	#	28 1/17/66	JCB	Final Approval
TYPE & TEMPER	HEAT TREAT. SPEC.	DRAWN	CHECKED	FINAL APPROVAL
54Ø4 YEL. IRIDITE				
FINISH & SPEC. NO.		ELEC. DES. APP.	MECH. DES. APP.	
				MS 4869 Ø

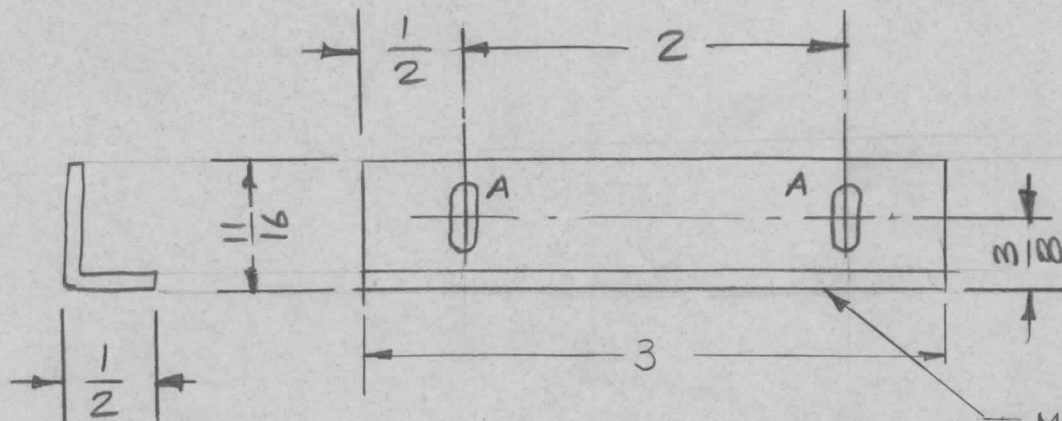
Ø ORIGINAL RELEASE FOR PRODUCTION	3/28/66	—	HLA			
SYM	DESCRIPTION	DATE	CH. NO.	DRAFTS	CHECKER	ENG. APP.
UNLESS OTHERWISE SPECIFIED DIMENSIONS ARE IN INCHES AND INCLUDE CHEMICALLY APPLIED OR PLATED FINISHES		SCALE DO NOT SCALE				
DECIMALS .X ± .05 .XX ± .01 .XXX ± .005	TOLERANCES	FRACTIONS ± 1/64 ANGLES ± 0° 30'	CODE A			

UNLESS OTHERWISE SPECIFIED:

REQ. PER UNIT	USED ON			MS 4870	A
	MODEL	ASS'Y. NO.	DATE		
1	TDC-7	A5434			

1. USE MATERIAL THICKNESS FOR MAXIMUM RADIUS ON ALL BENDS
2. ALL ANGULAR BENDS 90 DEGREES
3. REMOVE ALL BURRS AND SHARP EDGES

A -  $\frac{5}{32} \times \frac{3}{8}$  SLOT 2 REQ



METAL STAMP TMC PART NO. 1/8 HIGH GOTHIC, WITH LATEST REVISION LETTER

FINISH NOTE:

1. S109 PASSIVATE

2. SHIF EN CO SPINATE IRM

3. SHIF TMC ON 67 ENAM

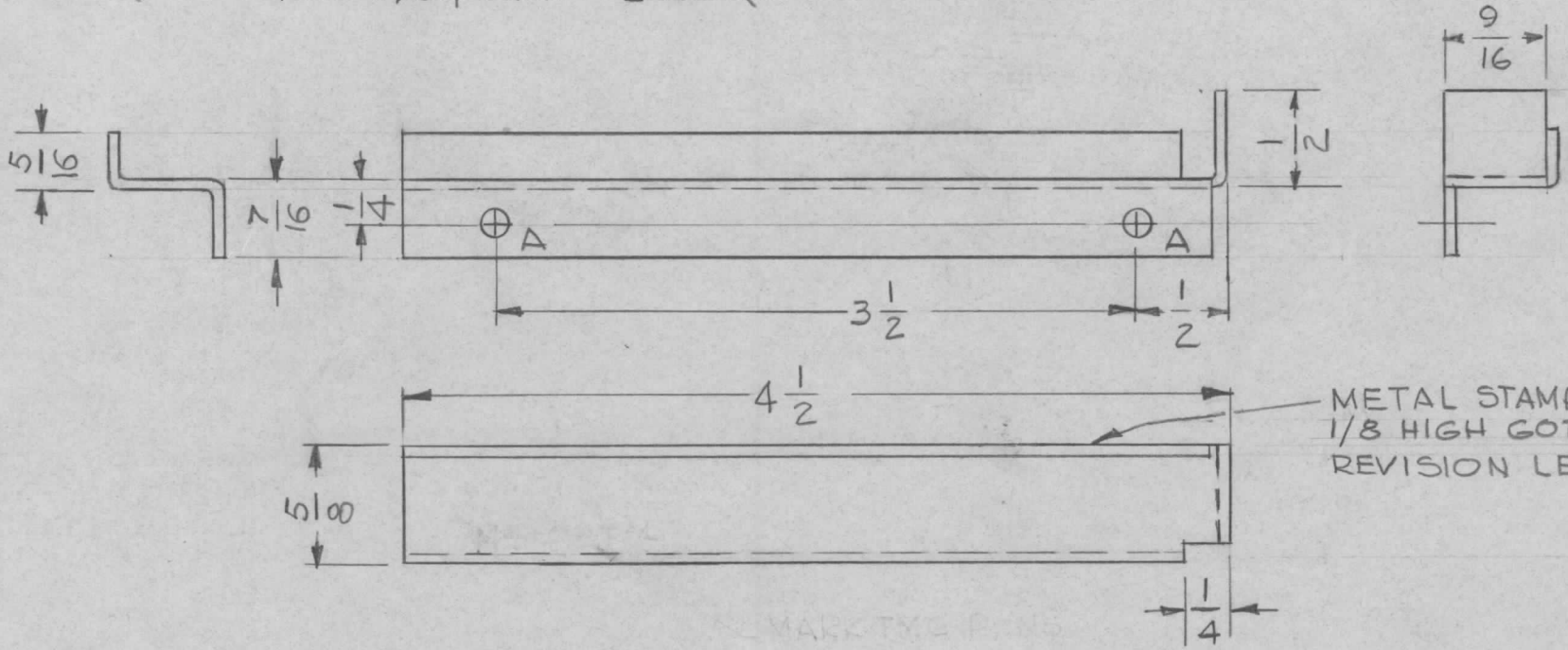
REQ.	ITEM	PART NO.	POSE	DESCRIPTION	SYMBOL	
		16 GA (.063)		THE TECHNICAL MATERIEL CORP. MAMARONECK. NEW YORK		
A	DELE. FINISH NOTES 2 & 3	5/2/66 16191 HLA: QCB		RETAINER, FILTER		
Ø	ORIGINAL RELEASE FOR PRODUCTION	3/28/66 - HLA				
SYM	DESCRIPTION	DATE	CH. NO.	DRAFTS	CHECKER	ENG. APP.
UNLESS OTHERWISE SPECIFIED DIMENSIONS ARE IN INCHES AND INCLUDE CHEMICALLY APPLIED OR PLATED FINISHES		SCALE	NONE			
DECIMALS .X ± .05 .XX ± .01 .XXX ± .005	TOLERANCES	FRACTIONS ± 1/64 ANGLES ± 0° 30'	CODE	A		
SEE NOTES		TYPE & TEMPER	HEAT TREAT. SPEC.	302	28/1/66	QCB
FINISH & SPEC. NO.		ELEC. DES. APP.		MECH. DES. APP.		FINAL APPROVAL
						MS 4870 A



- HOLE -  
A - 11/64 DIA. 2 REQ.

REQ. PER UNIT	USED ON		
	MODEL	ASSY. NO.	DATE
1	TOC-7	A 5434	2-16-66

MS 4871 A



METAL STAMP TMC PART NO.  
1/8 HIGH GOTHIC, W/LATEST  
REVISION LETTER.

**UNLESS OTHERWISE SPECIFIED:**

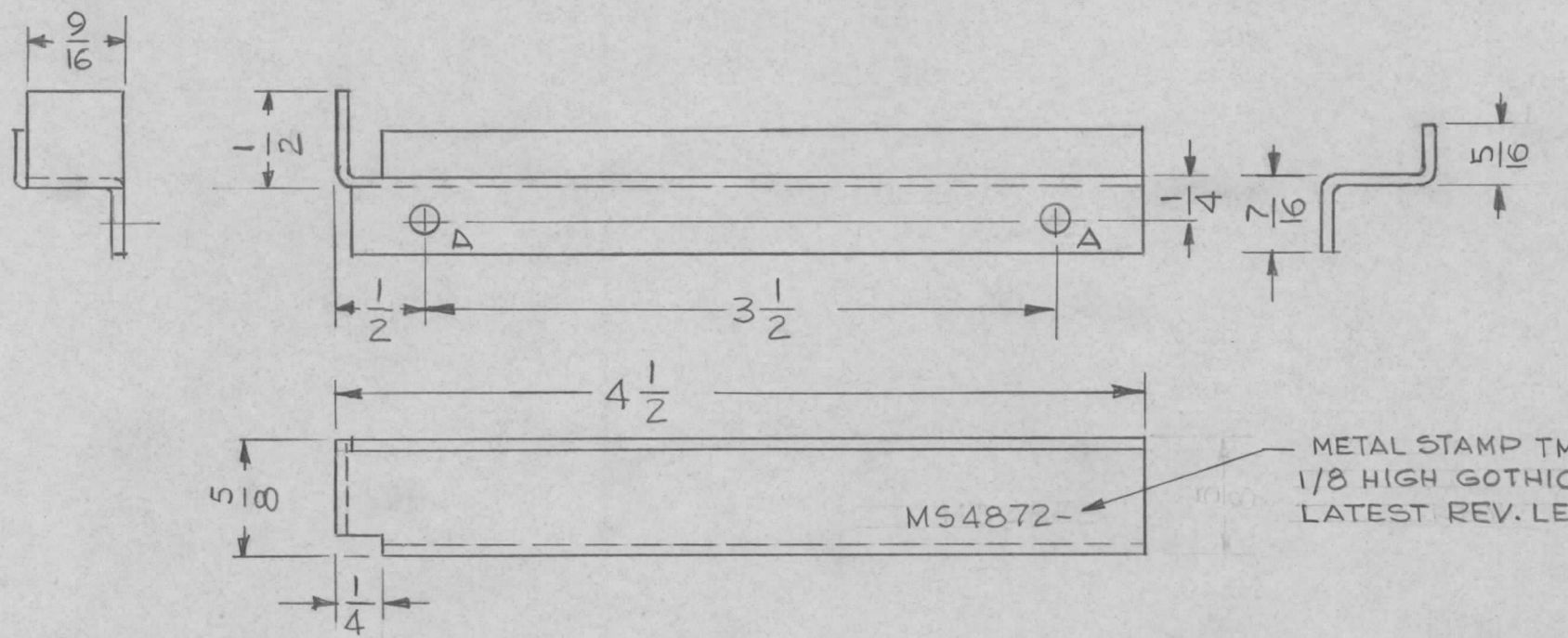
- USE MATERIAL THICKNESS FOR MAXIMUM RADIUS ON ALL BENDS
- ALL ANGULAR BENDS 90 DEGREES
- REMOVE ALL BURRS AND SHARP EDGES

- FINISH NOTE -  
1 - S104 PASSIVATE  
2 - S114 ZINCO ORGANIC POWER  
3 - S115 SMOOTH GRAY ENAMEL

REQ. ITEM	PART NO.	POSE	DESCRIPTION	SYMBOL										
	16 GA (.063)		THE TECHNICAL MATERIEL CORP. MAMARONECK, NEW YORK											
A	DELE. FINISH NOTE 2 & 3	5-2-66	16191 HLA <i>QJB</i> <i>ML</i>											
Ø	ORIGINAL RELEASE FOR PRODUCTION	3-28-66	HLA											
SYM	DESCRIPTION	DATE	CH. NO.	DRAFTS	CHECKER	ENG. APP.	MATERIAL							
UNLESS OTHERWISE SPECIFIED DIMENSIONS ARE IN INCHES AND INCLUDE CHEMICALLY APPLIED OR PLATED FINISHES							SCALE	302	G.D.L. <sup>2-16-66</sup>	<i>QJB</i>	<i>ML</i>			
							1:1	TYPE & TEMPER	HEAT TREAT. SPEC.	DRAWN	CHECKED	FINAL APPROVAL		
DECIMALS .X ± .05 .XX ± .01 .XXX ± .005							FRACTIONS ± 1/64 ANGLES ± 0° 30'	CODE A	SEE NOTES			FINISH & SPEC. NO.	ELEC. DES. APP.	MECH. DES. APP.
MS 4871 A														

- HOLE -  
A - 11/64 DIA. 2 REQ.

REQ. PER UNIT	USED ON			MS4872	A
	MODEL	ASS'Y. NO.	DATE		
1	TOC-7	A5434	2-16-66		



~ FINISH NOTE ~  
1-5104 PASSIVATE  
2-5114 ZINC CHROMATE PRIMER  
3-5115 SMOOTH GRAY ENAMEL

UNLESS OTHERWISE SPECIFIED:

1. USE MATERIAL THICKNESS FOR MAXIMUM RADIUS ON ALL BENDS
2. ALL ANGULAR BENDS 90 DEGREES
3. REMOVE ALL BURRS AND SHARP EDGES

REQ.	ITEM	PART NO.	POSE	DESCRIPTION	SYMBOL	
		16 GA (.063)		THE TECHNICAL MATERIEL CORP. MAMARONECK, NEW YORK		
A	DELE. FINISH NOTES 2 & 3	5/2/66	16191	HCA	<i>[Signature]</i>	
Ø	ORIGINAL RELEASE FOR PRODUCTION	3/28/66	-	HCA	<i>[Signature]</i>	
SYM	DESCRIPTION	DATE	CH. NO.	DRAFTS	CHECKER	ENG. APP.
UNLESS OTHERWISE SPECIFIED DIMENSIONS ARE IN INCHES AND INCLUDE CHEMICALLY APPLIED OR PLATED FINISHES		SCALE		1:1		
DECIMALS .X ± .05 .XX ± .01 .XXX ± .005	TOLERANCES	FRACTIONS ± 1/64 ANGLES ± 0° 30'	CODE	A		
SEE NOTES		302	G.O.L.	2-16-66	<i>[Signature]</i>	<i>[Signature]</i>
FINISH & SPEC. NO.		TYPE & TEMPER	HEAT TREAT. SPEC.	DRAWN	CHECKED	FINAL APPROVAL
				MS4872 A		

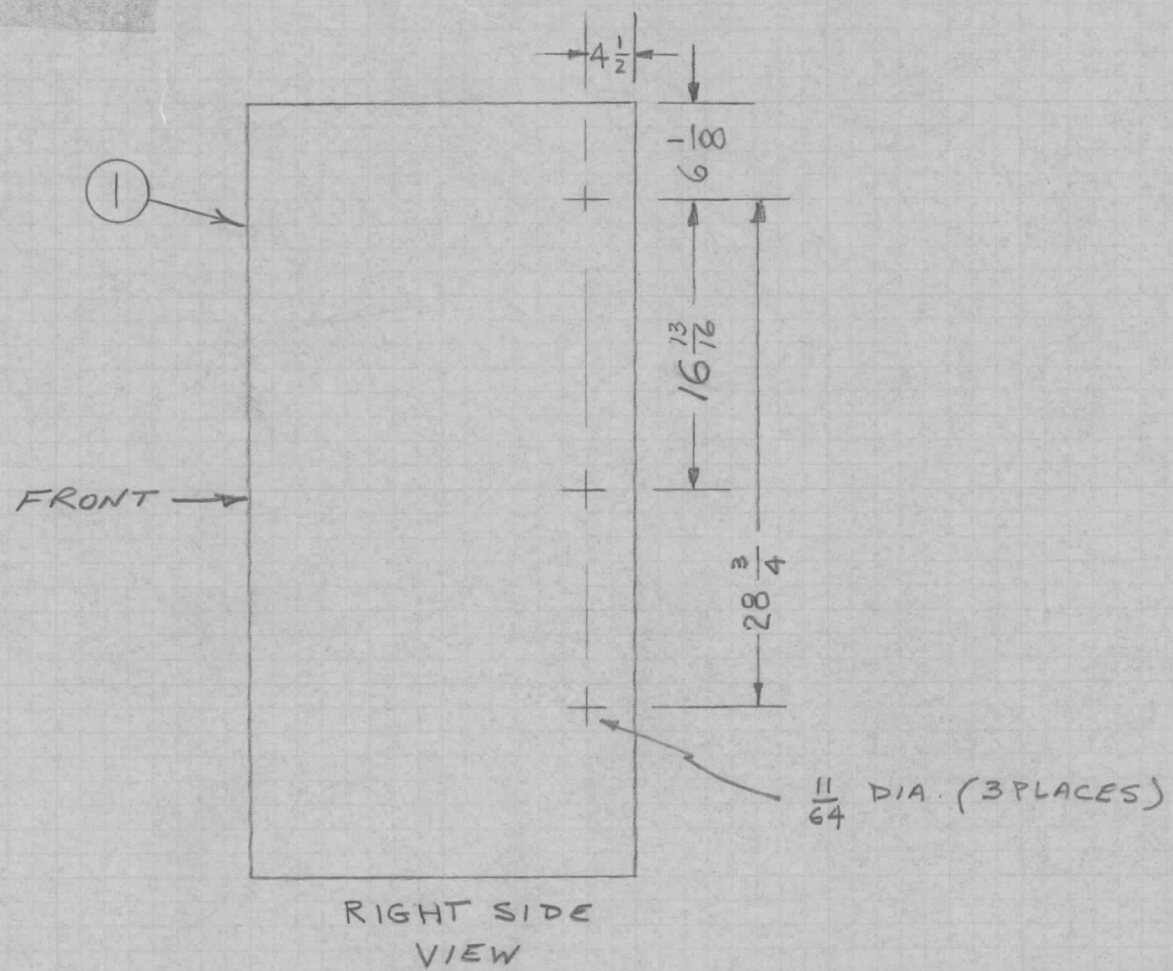
REQ.  
PER  
UNIT

MODEL  
RAK106-2

USED ON  
ASS'Y. NO.

DATE  
1-18-66

MS4873  $\emptyset$

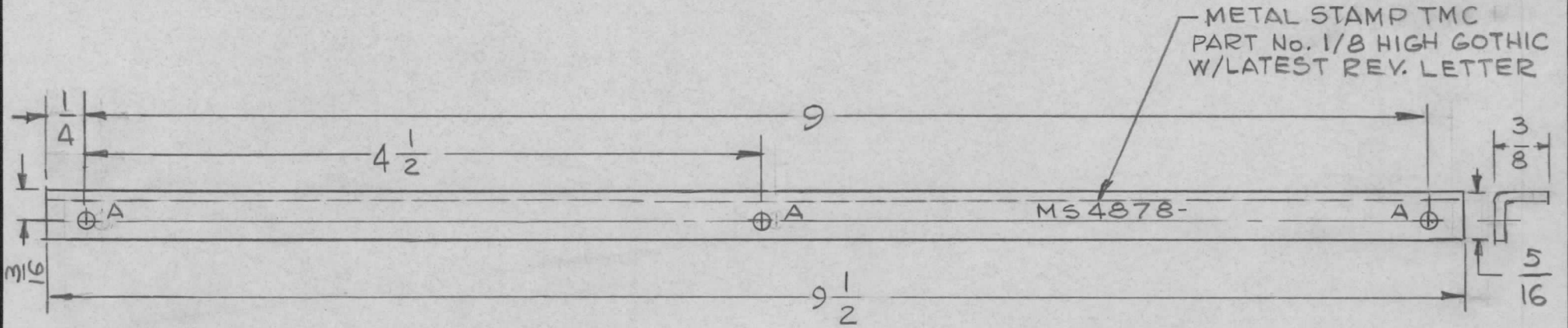


RIGHT SIDE  
VIEW

		1	1	MS2509-4	CABINET, EL. EQ.				
		REQ. ITEM		PART NO.	STURMER	DESCRIPTION		SYMBOL	
						THE TECHNICAL MATERIEL CORP. MAMARONECK, NEW YORK			
		STOCK SIZE				CABINET, EL. EQUIP.			
$\emptyset$	ORIGINAL RELEASE FOR PRODUCTION	1/25/66	M	Jc					
SYM	DESCRIPTION	DATE	CH. NO.	DRAFTS	CHECKER	ENG. APP.			
UNLESS OTHERWISE SPECIFIED DIMENSIONS ARE IN INCHES AND INCLUDE CHEMICALLY APPLIED OR PLATED FINISHES		SCALE							
DECIMALS .X $\pm$ .05 .XX $\pm$ .01 .XXX $\pm$ .005		FRACTIONS $\pm$ 1/64 ANGLES $\pm$ 0° 30'		CODE					
TOLERANCES						M.H. STURMER 1-18-66		JCB	
						DRAWN		CHECKED	
						TYPE & TEMPER		HEAT TREAT. SPEC.	
						FINISH & SPEC. NO.		ELEC. DES. APP.	
						MECH. DES. APP.		1/25/66	
						M/L 268		1-25-66	
								MS4873 $\emptyset$	
								CURRENCY NO. 140M	

HOLE  
A - 1/8" DIA. 3 REQ.

REQ. PER UNIT	USED ON			MS4878 A
	MODEL	ASS'Y. NO.	DATE	
7	STANDARD		12-2-66	

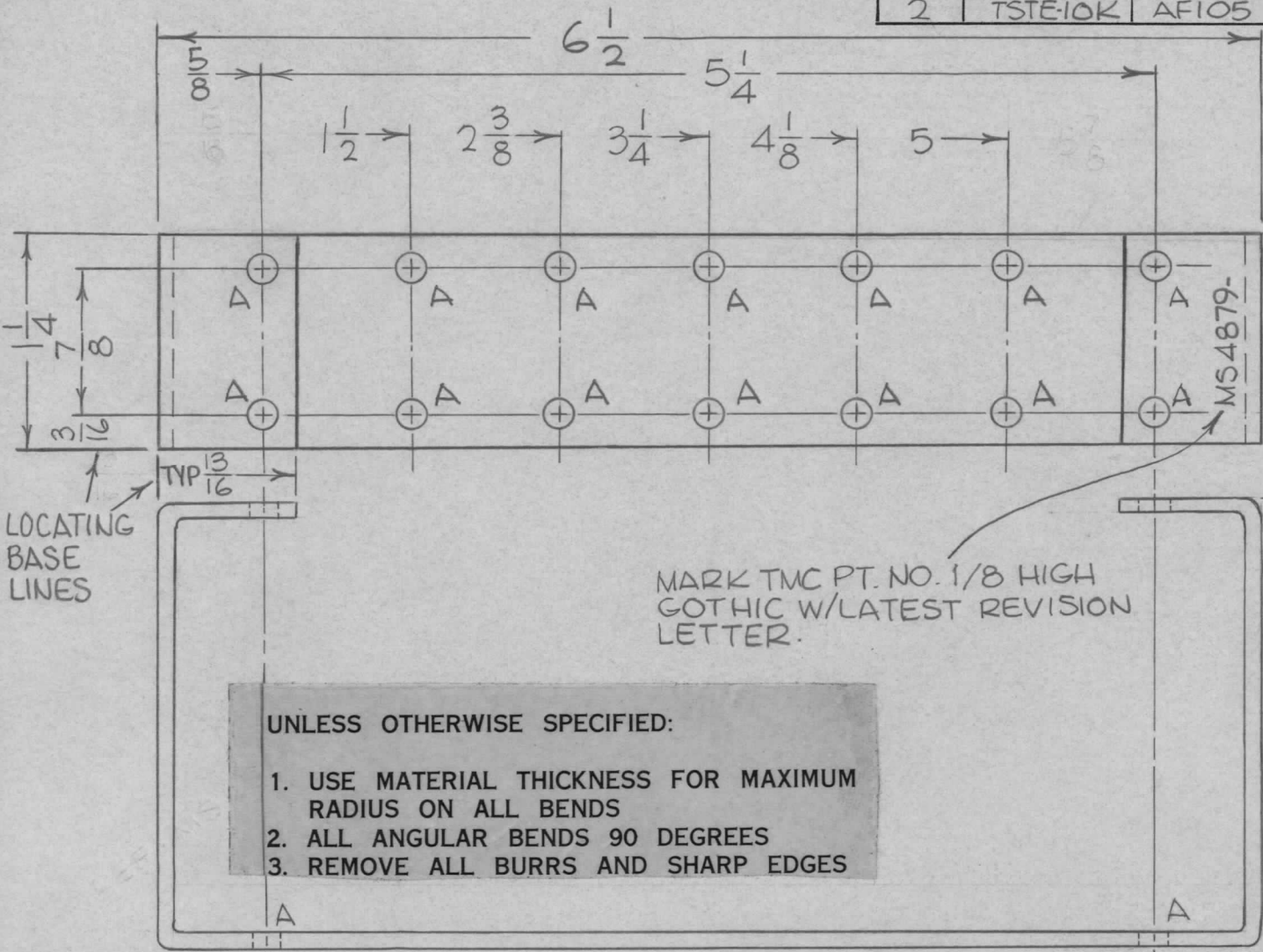


UNLESS OTHERWISE SPECIFIED:

1. USE MATERIAL THICKNESS FOR MAXIMUM RADIUS ON ALL BENDS
2. ALL ANGULAR BENDS 90 DEGREES
3. REMOVE ALL BURRS AND SHARP EDGES

REQ.	ITEM	PART NO.	DESCRIPTION				SYMBOL
		.063 THK	THE TECHNICAL MATERIEL CORP.				
		STOCK SIZE	MAMARONECK, NEW YORK				
A	DRWG MADE STANDARD	12/8/66	17412	WTO	JCS		
	ORIGINAL RELEASE	3/3/66					
SYM	DESCRIPTION	DATE	CH. NO.	DRAFTS	CHECKER	ENG. APP.	
UNLESS OTHERWISE SPECIFIED DIMENSIONS ARE IN INCHES AND INCLUDE CHEMICALLY APPLIED OR PLATED FINISHES		SCALE		1:1			
DECIMALS	FRACTIONS	CODE	5052-H32				G.D.L.
.X ± .05	± 1/64	A	S404 YEL IRIDITE				JCS
.XX ± .01	ANGLES		TYPE & TEMPER				CHECKED
.XXX ± .005	± 0° 30'		HEAT TREAT. SPEC.				FINAL APPROVAL
TOLERANCES			FINISH & SPEC. NO.				ELEC. DES. APP.
			ELEC. DES. APP.				MECH. DES. APP.
			MS4878				A

REQ. PER UNIT	USED ON			MS4879 Ø
	MODEL	ASS'Y. NO.	DATE	
2	TSTE-10K	AF105	2-15-66	



HOLES REQ.  
A-11/64 DIA 18

LOCATING  
BASE  
LINES

MARK TMC PT. NO. 1/8 HIGH  
GOTHIC W/LATEST REVISION  
LETTER.

**UNLESS OTHERWISE SPECIFIED:**

1. USE MATERIAL THICKNESS FOR MAXIMUM RADIUS ON ALL BENDS
2. ALL ANGULAR BENDS 90 DEGREES
3. REMOVE ALL BURRS AND SHARP EDGES

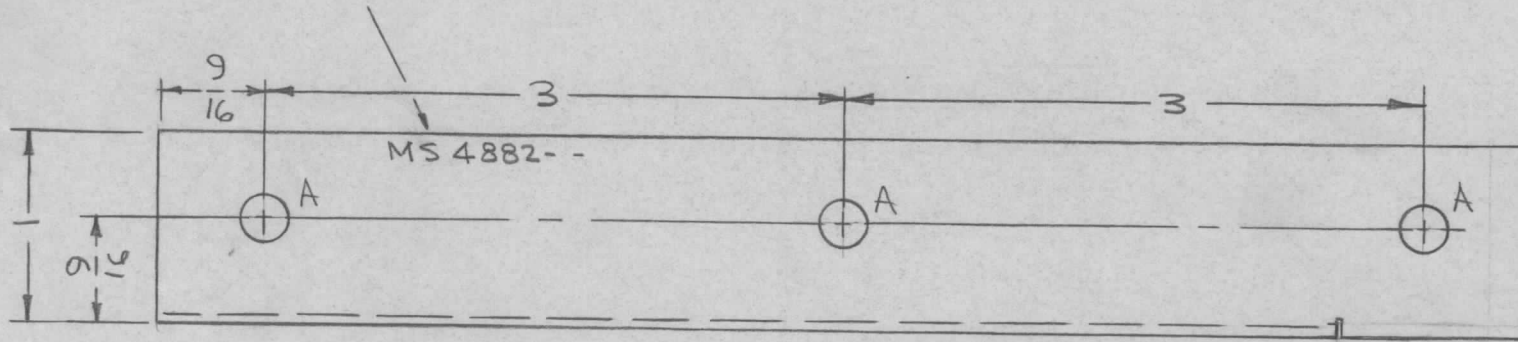
2 5/8

REF: LD1513 -1  
LD1513 -2

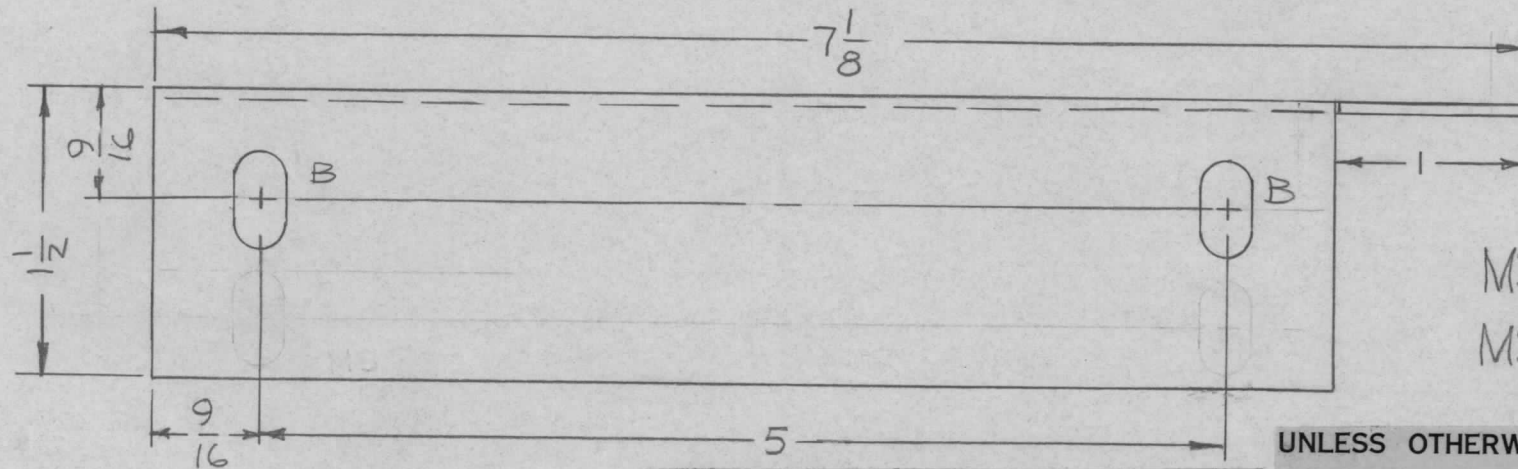
REQ.	ITEM	PART NO.	BUDETTI		DESCRIPTION	SYMBOL
Ø		.081 THICK			THE TECHNICAL MATERIEL CORP. MAMARONECK, NEW YORK	BRACKET, COMPONENT MTG.
		STOCK SIZE				
XI		ALUMINUM				
		MATERIAL				
		5052-H32				
		TYPE & TEMPER	HEAT TREAT. SPEC.			
		S404-IRIOTE				
		FINISH & SPEC. NO.	ELEC. DES. APP.	MECH. DES. APP.		

METAL STAMP TMC P/N  
 8/16" HIGH GOTHIC W/LATEST  
 REV. LETTER.

REQ. PER UNIT 1EA	USED ON			MS4882 ∅
	MODEL GPT-40KEC	ASS'Y. NO.	DATE 2-18-66	



HOLES:  
 A - 15/64 DIA. (3)  
 B - 1/4 X 1/2 SLOTS (2)



MS4882-1 AS SHOWN.  
 MS4882-2 OPPOSITE HAND.

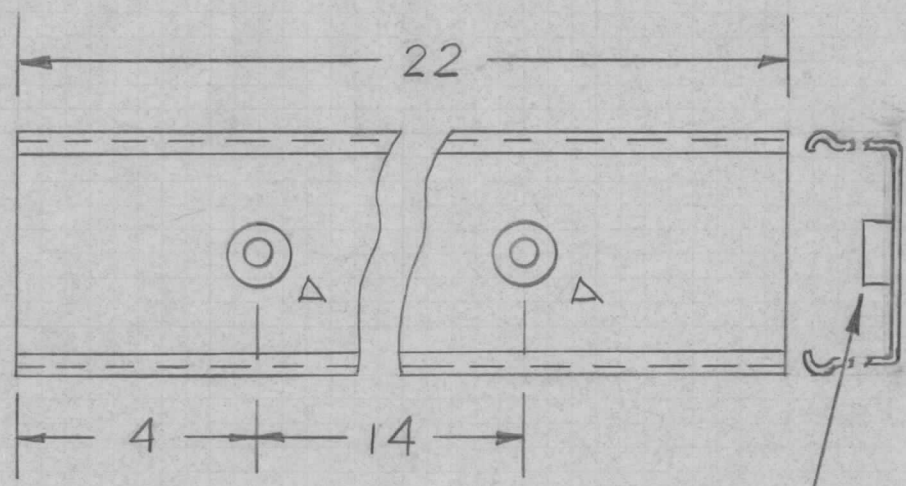
UNLESS OTHERWISE SPECIFIED:

FINISH NOTES:

1. DEGREASE
  2. S114 - ZINC CHROMATE PRIMER
  3. S520 - BLUE-GRAY TEXTURED VINYL PAINT
1. USE MATERIAL THICKNESS FOR MAXIMUM RADIUS ON ALL BENDS
  2. ALL ANGULAR BENDS 90 DEGREES
  3. REMOVE ALL BURRS AND SHARP EDGES

							REQ. ITEM	PART NO.	F. BUDETTI DESCRIPTION		SYMBOL	
							# 16 GA.		THE TECHNICAL MATERIEL CORP.			
							STOCK SIZE		MAMARONECK, NEW YORK			
							STEEL		BRACKET, ANGLE			
							MATERIAL					
ORIGINAL RELEASE FOR PRODUCTION							3-15-66	∅	G.D.L.			
SYM	DESCRIPTION	DATE	CH. NO.	DRAFTS	CHECKER	ENG. APP.						
UNLESS OTHERWISE SPECIFIED DIMENSIONS ARE IN INCHES AND INCLUDE CHEMICALLY APPLIED OR PLATED FINISHES		SCALE	1:1									
DECIMALS .X ± .05 .XX ± .01 .XXX ± .005	TOLERANCES	FRACTIONS ± 1/64 ANGLES ± 0° 30'	CODE	A								
							TYPE & TEMPER	HEAT TREAT. SPEC.	DRAWN	CHECKED	FINAL APPROVAL	
							SEE NOTES					
							FINISH & SPEC. NO.	ELEC. DES. APP.	MECH. DES. APP.	MS4882 ∅		

REQ. PER UNIT	USED ON			MS4885 $\emptyset$
	MODEL	ASS'Y. NO.	DATE	
1	CAB-20A		1-5-66	

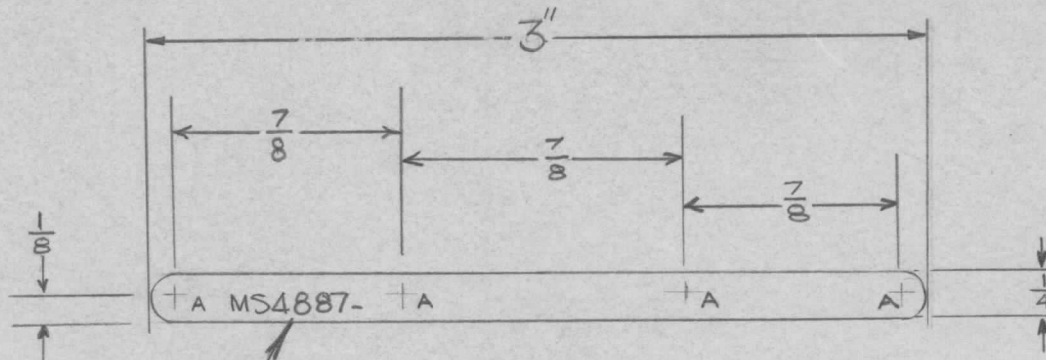


HOLE  
 $\Delta$ -.191-.194 DIA.      REQ. 2

① MOUNT IN ALL "A" HOLES

		2	1	NT129-632-4	NUT, SWAGE			
		REQ. ITEM	PART NO.		DESCRIPTION PE10666			SYMBOL
		TMC # PO1GO			THE TECHNICAL MATERIEL CORP. MAMARONECK, NEW YORK			
		STOCK SIZE			AC STRIP			
$\emptyset$	ORIGINAL RELEASE FOR PRODUCTION	3-15-66	A	Jc				
SYM	DESCRIPTION	DATE	CH. NO.	DRAFTS	CHECKER	ENG. APP.	MATERIAL	
UNLESS OTHERWISE SPECIFIED DIMENSIONS ARE IN INCHES AND INCLUDE CHEMICALLY APPLIED OR PLATED FINISHES		SCALE			M.H.S. 1-5-66			
		A					CHECKED	FINAL APPROVAL
DECIMALS	FRACTIONS	CODE			TYPE & TEMPER		HEAT TREAT. SPEC.	FINISH & SPEC. NO.
.X $\pm$ .05	$\pm$ 1/64	A					3-15-66	ELEC. DES. APP. MECH. DES. APP.
.XX $\pm$ .01	ANGLES							MS4885 $\emptyset$
.XXX $\pm$ .005	$\pm$ 0° 30'							

REQ. PER UNIT	USED ON			MS4887 $\emptyset$
	MODEL	ASS'Y. NO.	DATE	
2	AF105	A5443	3-2-66	



MARK TMC PART NO.  
1/8 HIGH GOTHIC  
W/LATEST REV. LETTER.

A HOLES: 5/32" DIAM (4 REQ)

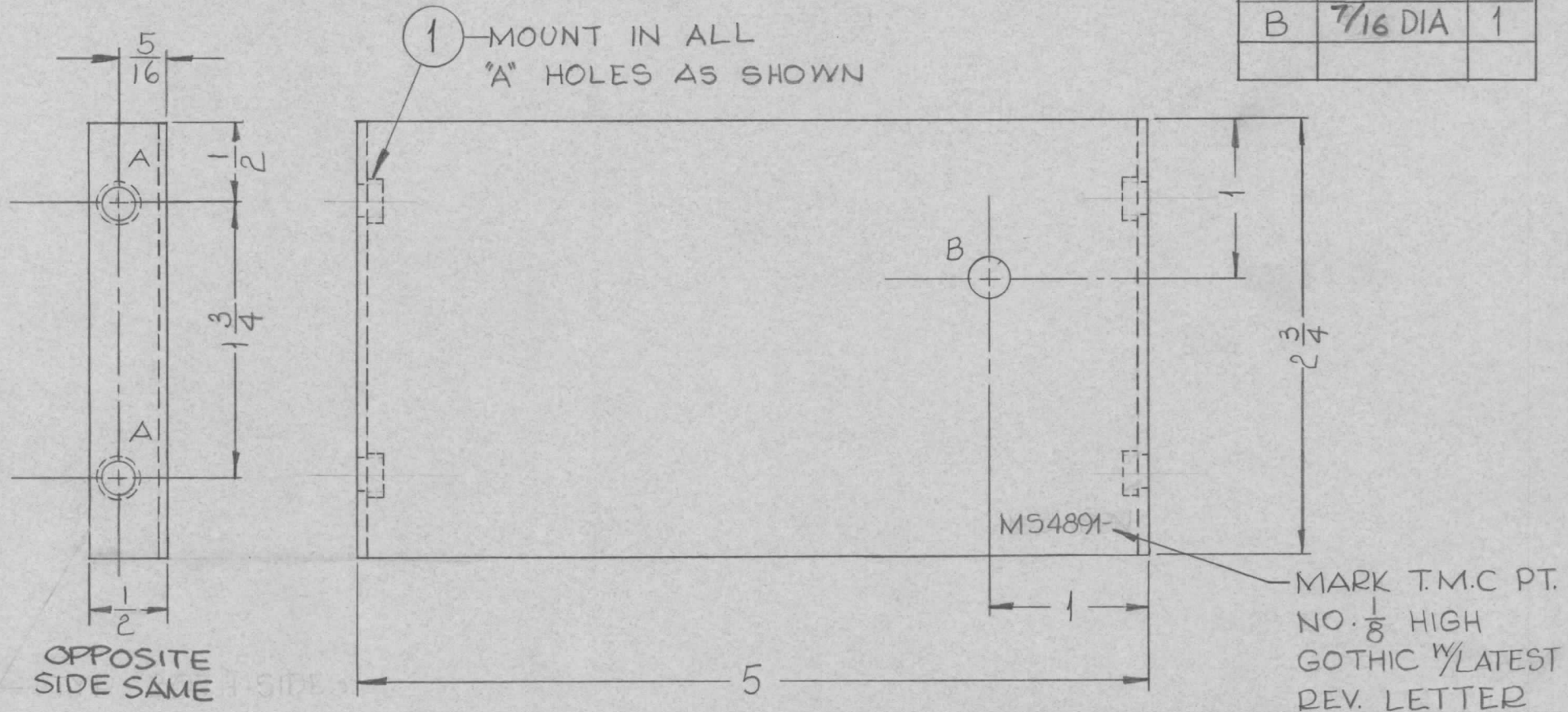
REQ. ITEM	PART NO.	BUDETTI	DESCRIPTION	SYMBOL							
	.062 INCH		THE TECHNICAL MATERIEL CORP. MAMARONECK, NEW YORK								
$\emptyset$	STOCK SIZE										
X	HOT ROLLED COPPER		LEAD, CONNECTING								
SYM	DESCRIPTION	DATE	CH. NO.	DRAFTS	CHECKER	ENG. APP.	MATERIAL				
UNLESS OTHERWISE SPECIFIED DIMENSIONS ARE IN INCHES AND INCLUDE CHEMICALLY APPLIED OR PLATED FINISHES		SCALE		NOT TO SCALE							
DECIMALS	TOLERANCES	FRACTIONS	CODE								
.X $\pm$ .05 .XX $\pm$ .01 .XXX $\pm$ .005		$\pm$ 1/64 ANGLES $\pm$ 0° 30'									
							TYPE & TEMPER	HEAT TREAT. SPEC.	DRAWN	CHECKED	FINAL APPROVAL
							\$245 & \$423		A.A.	B.C.	MS4887 $\emptyset$
							FINISH & SPEC. NO.		ELEC. DES. APP.	MECH. DES. APP.	



REQ. PER UNIT	USED ON		
	MODEL	ASS'Y. NO.	DATE
2	LPF750-3		3-14-66

MS4889  $\phi$

HOLE	DESCRIPT.	REQ'D
A	.191-.194D.	4
B	7/16 DIA	1

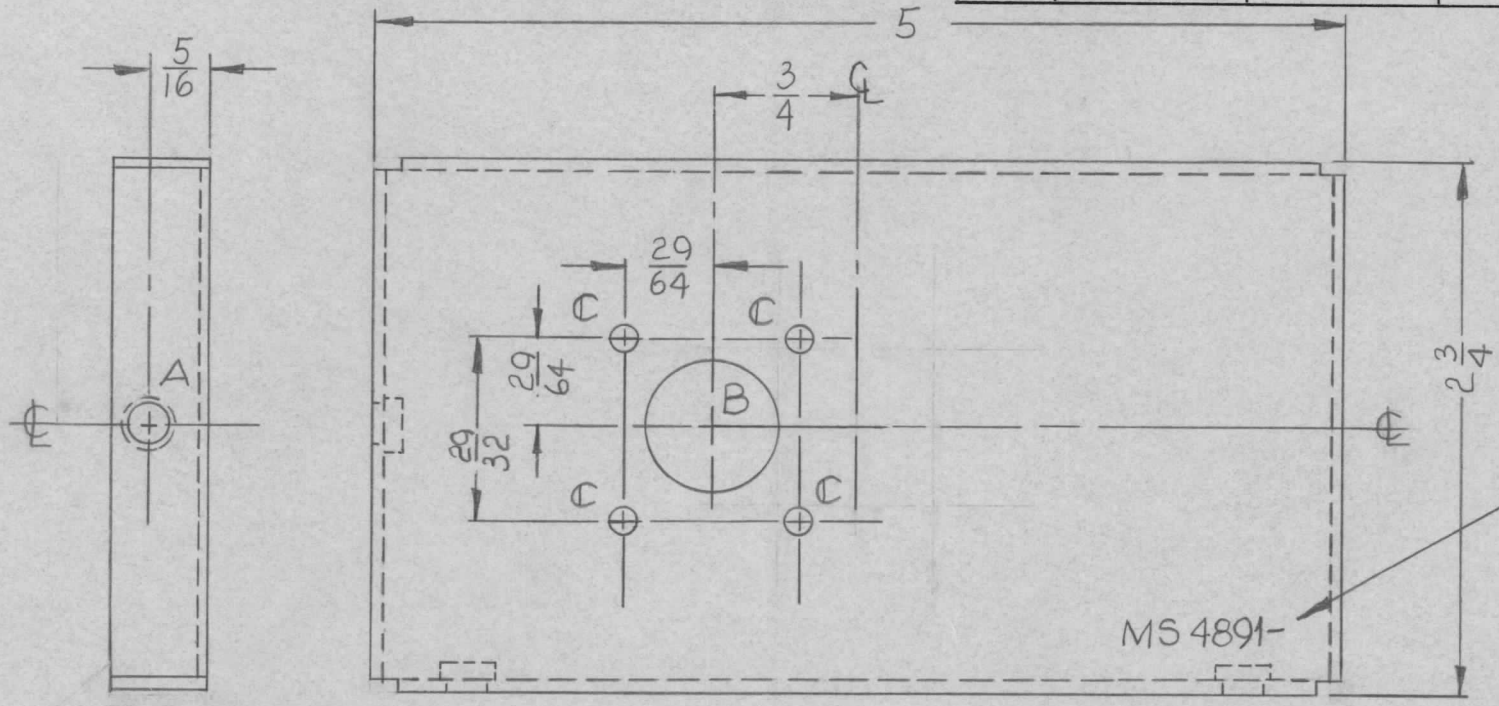


4	1	NT129-632-4	NUT, PLAIN, SPLINE	A
REQ. ITEM	PART NO.		BAKER DESCRIPTION AF106M5-2	SYMBOL
.062 THK STOCK SIZE			THE TECHNICAL MATERIEL CORP. MAMARONECK, NEW YORK	
ALUMINUM			SHIELD, CENTER	
MATERIAL				
5052-H32		WFW	QCB	M. W. H. A. N.
TYPE & TEMPER		HEAT TREAT. SPEC.	DRAWN	CHECKED
YELLOW IRIDITE, S404		RFB		
FINISH & SPEC. NO.		ELEC. DES. APP.	MECH. DES. APP.	MS4889 $\phi$

Ø ORIGINAL RELEASE FOR PRODUCTION	3/25/66	C.V.			
X <sub>1</sub> DIM "B" WAS 1/4	3-24-66	X <sub>1</sub>	WFW		
SYM	DESCRIPTION	DATE	CH. NO.	DRAFTS	CHECKER
UNLESS OTHERWISE SPECIFIED DIMENSIONS ARE IN INCHES AND INCLUDE CHEMICALLY APPLIED OR PLATED FINISHES		SCALE 1:1			
DECIMALS .X ± .05 .XX ± .01 .XXX ± .005	FRACTIONS ± 1/64 ANGLES ± 0° 30'	TOLERANCES			
CODE					

REQ. PER UNIT	USED ON		
	MODEL	ASS'Y. NO.	DATE
2	LDF750-3		

MS4891  $\emptyset$

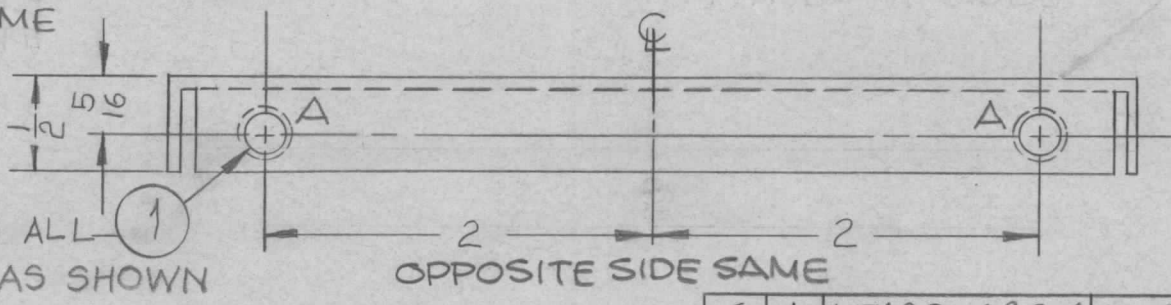


HOLE	DESCRIPTION	REQ'D
A	.191-194 DIA.	6
B	11/16 DIA.	1
C	9/64 DIA.	4

MARK T.M.C. PT. NO.  $\frac{1}{8}$  HIGH GOTHIC W/LALEST. REV. LETTER

MS 4891-

OPPOSITE SIDE SAME



MOUNT IN ALL "A" HOLES AS SHOWN

OPPOSITE SIDE SAME

						6	1	NT129-632-4	NUT, PLAIN, SPLINE	A
						REQ. ITEM		PART NO.	BAKER DESCRIPTION AF106MS-4	SYMBOL
								.062 THICK	THE TECHNICAL MATERIEL CORP. MAMARONECK, NEW YORK	
								STOCK SIZE	PLATE, FILTER NECK	
								ALUMINUM		
								MATERIAL		
								5052-H32	WFW	JCB
								TYPE & TEMPER	DRAWN	CHECKED
								HEAT TREAT. SPEC.	FINAL APPROVAL	
								YELLOW IRIDITE, S404	RAB	
								FINISH & SPEC. NO.	ELEC. DES. APP.	MECH. DES. APP.
									MS4891 $\emptyset$	

UNLESS OTHERWISE SPECIFIED DIMENSIONS ARE IN INCHES AND INCLUDE CHEMICALLY APPLIED OR PLATED FINISHES

SCALE 1:1

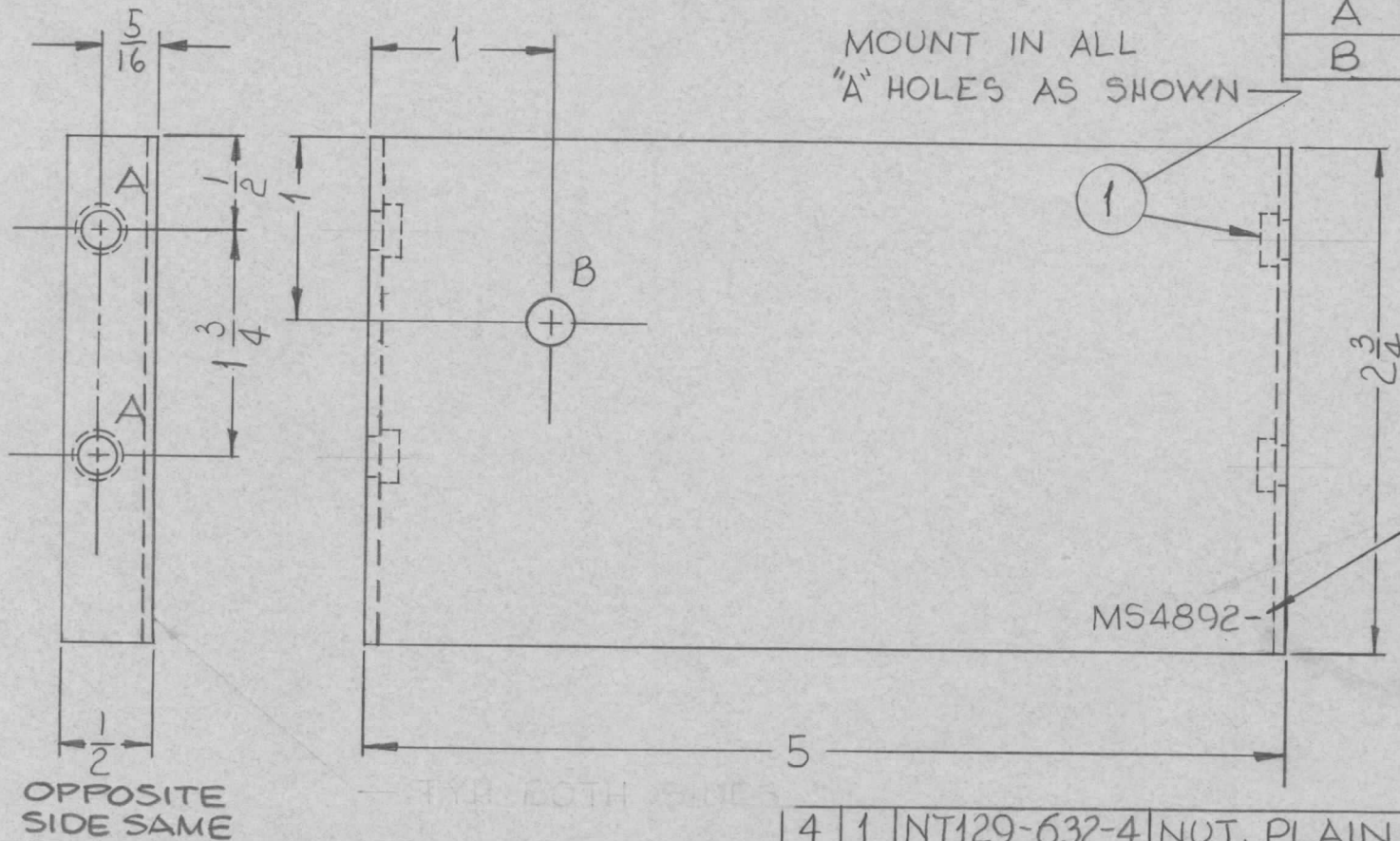
DECIMALS .X ± .05 .XX ± .01 .XXX ± .005

FRACTIONS ± 1/64 ANGLES ± 0° 30'

TOLERANCES

REQ. PER UNIT	USED ON			MS4892	Ø
	MODEL	ASS'Y. NO.	DATE		
2	LPF750-3		3-14-66		

HOLE	DESCRIPTION	REQ'D
A	.191-.194 DIA.	4
B	7/16 DIA.	1



MOUNT IN ALL "A" HOLES AS SHOWN

MARK T.M.C. PT. NO.  $\frac{1}{8}$  HIGH GOTHIC W/LATEST REV. LETTER

OPPOSITE SIDE SAME

4	1	NT129-632-4	NUT, PLAIN, SPLINE	A	
REQ. ITEM	PART NO.		BAKER	DESCRIPTION AF106 MS-5	SYMBOL
.062 THICK			THE TECHNICAL MATERIEL CORP.		
STOCK SIZE			MAMARONECK. NEW YORK		
ALUMINUM			SHIELD, CENTER		
MATERIAL					
5052-H32			WAW	JCB	M. H. King
TYPE & TEMPER	HEAT TREAT. SPEC.	DRAWN	CHECKED	FINAL APPROVAL	
YELLOW IBIDITE, S404		RJB		MS4892 Ø	
FINISH & SPEC. NO.		ELEC. DES. APP.	MECH. DES. APP.		

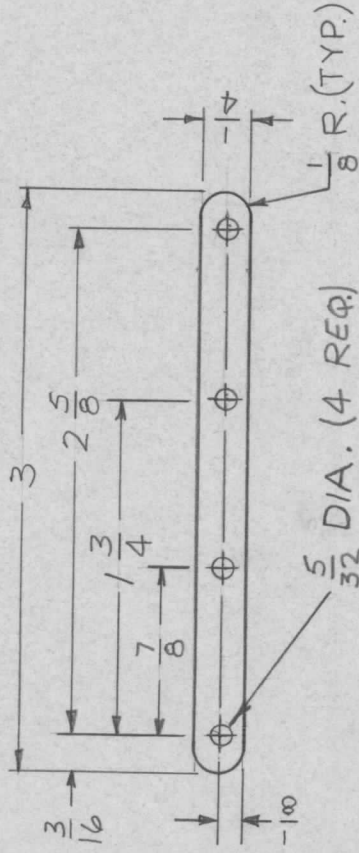
Ø	ORIGINAL RELEASE FOR PRODUCTION	3/25/66	C.V			
X <sub>1</sub>	DIM "B" WAS 1/4	3-24-66	X <sub>1</sub>	WAW		
SYM	DESCRIPTION	DATE	CH. NO.	DRAFTS	CHECKER	ENG. APP.
UNLESS OTHERWISE SPECIFIED DIMENSIONS ARE IN INCHES AND INCLUDE CHEMICALLY APPLIED OR PLATED FINISHES		SCALE 1:1				
DECIMALS .X ± .05 .XX ± .01 .XXX ± .005	TOLERANCES	FRACTIONS ± 1/64 ANGLES ± 0° 30'	CODE			

APPLICATION

QTY	MODEL USED ON	ASS'Y NO.	LTR
2	AF105	A15443	X

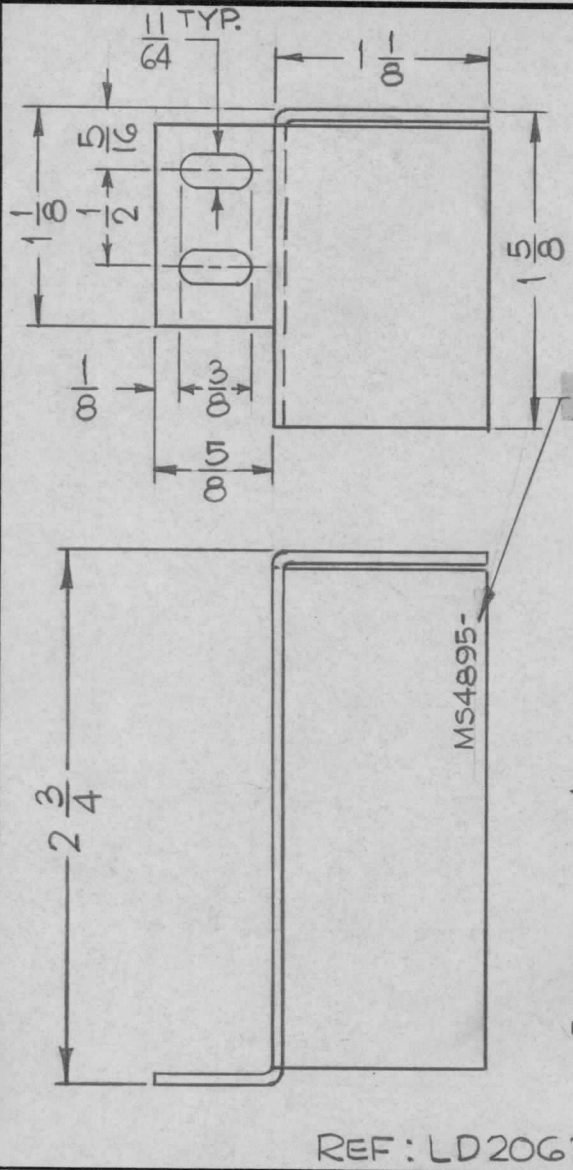
REVISIONS

DESCRIPTION	DATE	E.M.N.NO	DRAFT	CHKD	APPD
EXP. RELEASE	10.25.68		H.S.		<i>[Signature]</i>
ORIG. RELEASE FOR PROD.	10/28/68	Ø	R.G.		<i>[Signature]</i>



UNLESS OTHERWISE SPECIFIED DIMENSIONS ARE IN INCHES AND INCLUDE CHEMICALLY APPLIED OR PLATED FINISHES		REQ'D	ITEM	PART NUMBER	DESCRIPTION	SYM.
DECIMALS .X ± .05 .XX ± .01 .XXX ± .005		B. PODETTI				
FRACTIONS 1/64		FINAL APPROVAL	LIST OF MATERIAL			
ANGLES 0° .30°		<i>[Signature]</i>		THE TECHNICAL MATERIEL CORP. MAMARONECK, NEW YORK		
MATERIAL .062 THICK HOT ROLLED COPPER		MECH. DES.	LEAD, CONNECTING			
FINISH S245 & S423		ELECT. DES.	SIZE A			
		CHECKED	CODE IDENT. NO. 82679			
		DRAWN	DWG NO. MS4894			
			SCALE 1:1			
			SHEET			
			OF			

NOTICE TO PERSONS RECEIVING THIS DRAWING  
THE TECHNICAL MATERIEL CORPORATION claims proprietary right in the material disclosed hereon. This drawing is issued in confidence for engineering information only and may not be reproduced or used to manufacture anything shown hereon without permission from THE TECHNICAL MATERIEL CORPORATION to the user. This drawing is loaned for mutual assistance and is subject to recall at any time.



HOLE	DESCRIPTION	REQ	REQ. PER UNIT	USED ON		
				MODEL	ASS'Y. NO.	DATE
A	13/64 DIA.	3	2	PSP-350B	A4445	3-15-66

MS4895 A

METAL STAMP TMC PART NO. 1/8 HIGH GOTHIC W/LATEST REV. LETTER

MS4895-1 - AS SHOWN  
 MS4895-2 - OPPOSITE HAND

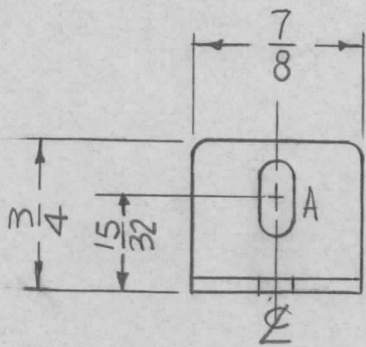
\* THIS HOLE REQ ON MS4895-2  
 MS4895-2 ONLY.

- UNLESS OTHERWISE SPECIFIED:
1. USE MATERIAL THICKNESS FOR MAXIMUM RADIUS ON ALL BENDS
  2. ALL ANGULAR BENDS 90 DEGREES
  3. REMOVE ALL BURRS AND SHARP EDGES

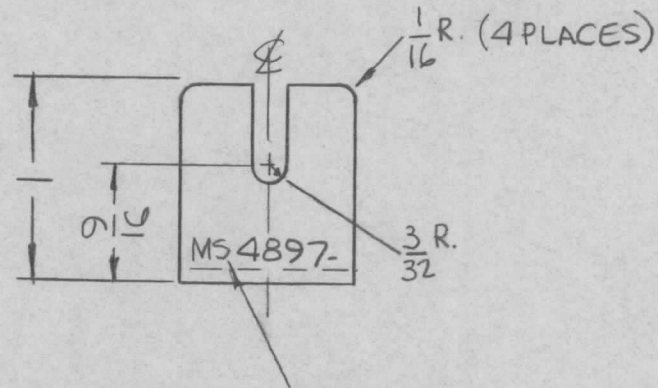
REF: LD2063 FOR MS4895-1

SYM	DESCRIPTION	DATE	CH. NO.	DRAFTS	CHECKER	ENG. APP.	REQ. ITEM	PART NO.	DESCRIPTION	SYMBOL	
A	"A" HOLE ADDED	4-1-66	16049	WFW			.064		THE TECHNICAL MATERIEL CORP. MAMARONECK, NEW YORK	BRACKET, MTG. RESISTOR	
	ORIGINAL RELEASE FOR PRODUCTION	3-16-66		WFW			ALUMINUM				
							MATERIAL				
UNLESS OTHERWISE SPECIFIED DIMENSIONS ARE IN INCHES AND INCLUDE CHEMICALLY APPLIED OR PLATED FINISHES		SCALE		1:1			5052-H32		H. AUSTIN	QC	MMK
DECIMALS .X ± .05 .XX ± .01 .XXX ± .005		TOLERANCES		FRACTIONS ± 1/64 ANGLES ± 0° 30'		CODE A	TYPE & TEMPER	HEAT TREAT. SPEC.	DRAWN	CHECKED	FINAL APPROVAL
							S404-YEL. IRIDITE		3-15-66		
							FINISH & SPEC. NO.		ELEC. DES. APP.	MECH. DES. APP.	MS4895 A

REQ. PER UNIT	USED ON			MS4897 $\emptyset$
	MODEL	ASS'Y. NO.	DATE	
4	GPT-10KLF	A5450	3-17-66	



SLOT  
A - 3/16 X 3/8 (1 REQ.)

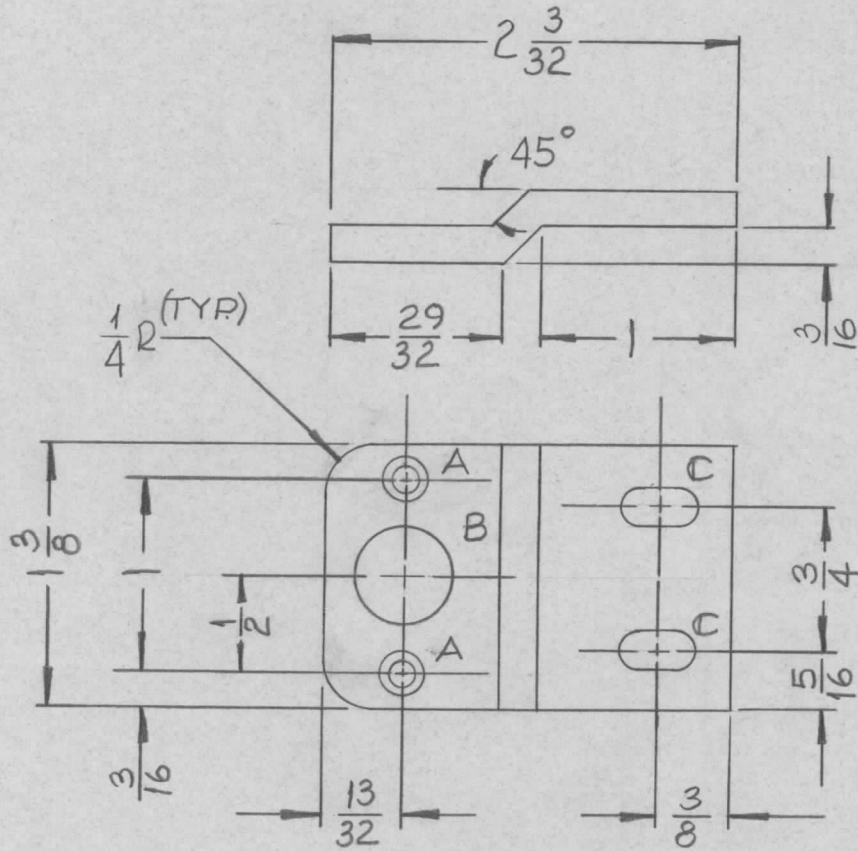


- UNLESS OTHERWISE SPECIFIED:
1. USE MATERIAL THICKNESS FOR MAXIMUM RADIUS ON ALL BENDS
  2. ALL ANGULAR BENDS 90 DEGREES
  3. REMOVE ALL BURRS AND SHARP EDGES

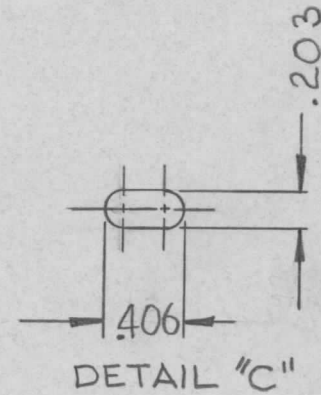
MARK TMC P/N  
1/8 HIGH GOTHIC  
W/LATEST REV.  
LETTER.

							REQ. ITEM	PART NO.	F. BUDETTI	DESCRIPTION	SYMBOL		
								.064 THK	THE TECHNICAL MATERIEL CORP. MAMARONECK, NEW YORK				
								STOCK SIZE	BRACKET, MTG. CAPACITOR				
$\emptyset$	ORIGINAL RELEASE FOR PRODUCTION	6/14/66	$\emptyset$	CV.				ALUMINUM					
SYM	DESCRIPTION	DATE	CH. NO.	DRAFTS	CHECKER	ENG. APP.		MATERIAL					
UNLESS OTHERWISE SPECIFIED DIMENSIONS ARE IN INCHES AND INCLUDE CHEMICALLY APPLIED OR PLATED FINISHES		SCALE 1:1							5052-H32	<i>[Signature]</i>	<i>[Signature]</i>	<i>[Signature]</i>	
DECIMALS .X $\pm$ .05 .XX $\pm$ .01 .XXX $\pm$ .005	TOLERANCES	FRACTIONS $\pm$ 1/64 ANGLES $\pm$ 0° 30'	CODE A						TYPE & TEMPER S404 YEL. IRIDITE	HEAT TREAT. SPEC.	DRAWN 06-1466	CHECKED <i>[Signature]</i>	FINAL APPROVAL MS4897 $\emptyset$
								FINISH & SPEC. NO.	ELEC. DES. APP.	MECH. DES. APP.			

REQ. PER UNIT	USED ON			MS4898	∅
	MODEL	ASS'Y. NO.	DATE		
2	TSTE 10K	AX611	3-24-66		



HOLE	DESCRIPTION	REQ'D
A	#30 (.128) DIA. (DRILL) C'SK 82° X .218 DIA	2
B	.500 DIA.	1
C	SEE DETAIL "C"	2



REF. 4479 (FRAME NO.)

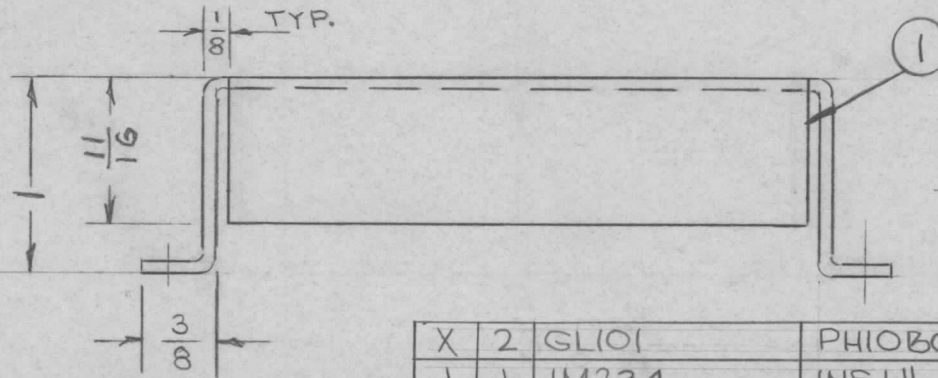
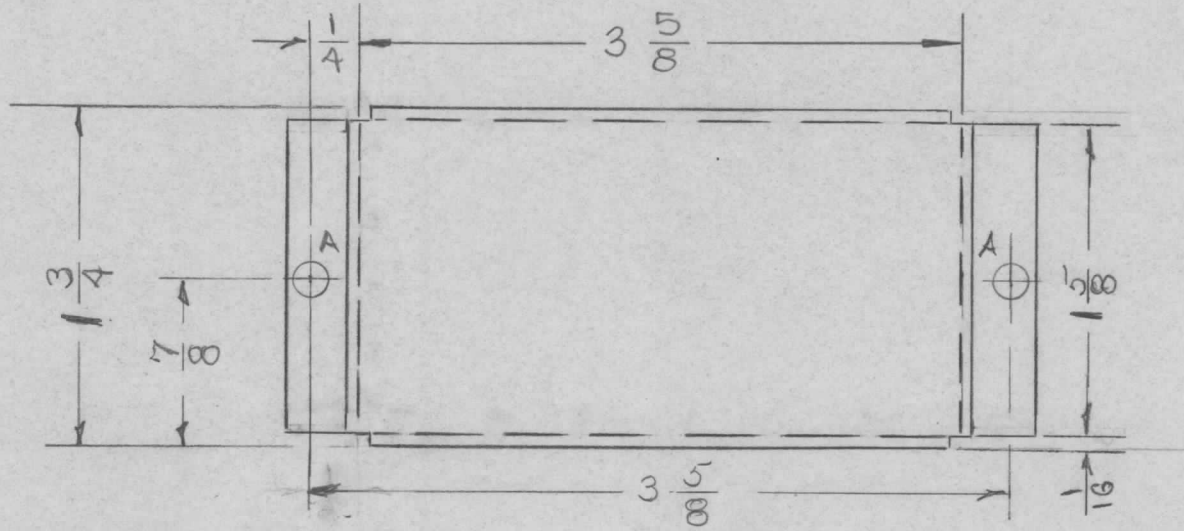
REQ. ITEM	PART NO.	BUDETTI DESCRIPTION	SYMBOL
	#7 GA.	THE TECHNICAL MATERIEL CORP. MAMARONECK. NEW YORK	
	STOCK SIZE		
	STEEL	BRKT, MTG HV SUPPLY	
	MATERIAL		
	TYPE & TEMPER	HEAT TREAT. SPEC.	DRAWN
			CHECKED
			FINAL APPROVAL
	COPPER FLASH		
	FINISH & SPEC. NO.	ELEC. DES. APP.	MECH. DES. APP.
			MS4898 ∅

A - 11/64 DIA. - 2 REQ'D.

REQ. PER UNIT	USED ON			MS-4899	A
	MODEL	ASS'Y. NO.	DATE		
1	TPSG-1		3-14-66		

UNLESS OTHERWISE SPECIFIED:

1. USE MATERIAL THICKNESS FOR MAXIMUM RADIUS ON ALL BENDS
2. ALL ANGULAR BENDS 90 DEGREES
3. REMOVE ALL BURRS AND SHARP EDGES



AFTER LETTERING  
INSTALL ① INSIDE  
COVER WITH ②

REF LD2065

REQ.	ITEM	PART NO.	DESCRIPTION	SYMBOL
X	2	GL101	PHIOBOND	
1	1	IM234	INSULATION, FISH PAPER	
.063 ALUM. STOCK SIZE			THE TECHNICAL MATERIEL CORP. MAMARONECK, NEW YORK	
5052-N32			COVER, FUSE	
MATERIAL				
TYPE & TEMPER			DRAWN	CHECKED
HEAT TREAT. SPEC.			FINAL APPROVAL	
S404 YEL. IRIDITE				
FINISH & SPEC. NO.			ELEC. DES. APP.	MECH. DES. APP.
			MS-4899 A	

SYM	DESCRIPTION	DATE	CH. NO.	DRAFTS	CHECKER	ENG. APP.
Δ	IT. 1 & 2 ADD. NOTE ADD	10.4.66	16982	WHD	QCB	
⊙	ORIGINAL RELEASE FOR PRODUCTION			WHD		
UNLESS OTHERWISE SPECIFIED DIMENSIONS ARE IN INCHES AND INCLUDE CHEMICALLY APPLIED OR PLATED FINISHES		SCALE DO NOT SCALE				
DECIMALS .X ± .05 .XX ± .01 .XXX ± .005	TOLERANCES	FRACTIONS ± 1/64 ANGLES ± 0° 30'	CODE			