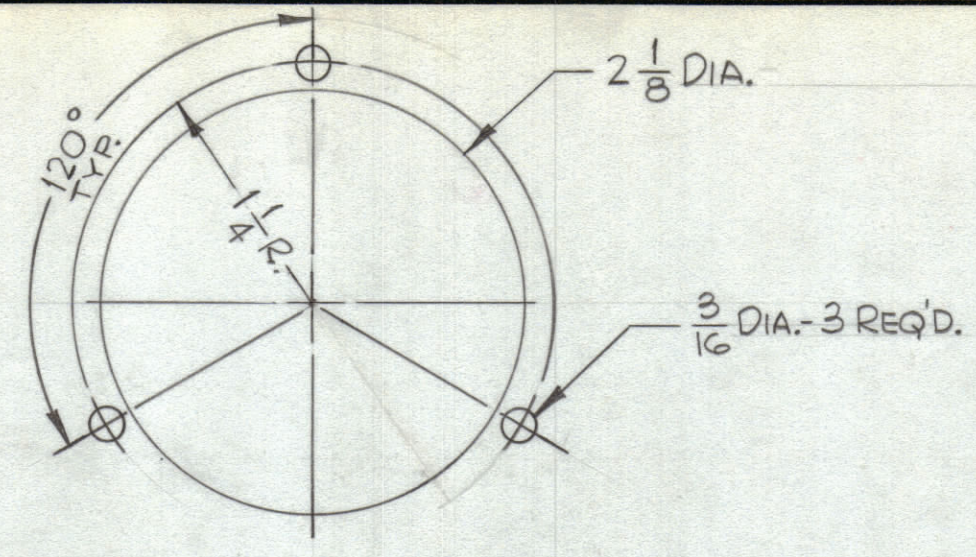


HOLE	DESCRIPTION	REQ'D.
A	DRILL & C'SINK - .144 x .284 x 82°	2
B	SEE DETAIL	1
C	1 1/4 DIA.	1
D	13/32 DIA.	4
E	.078 DIA.	8

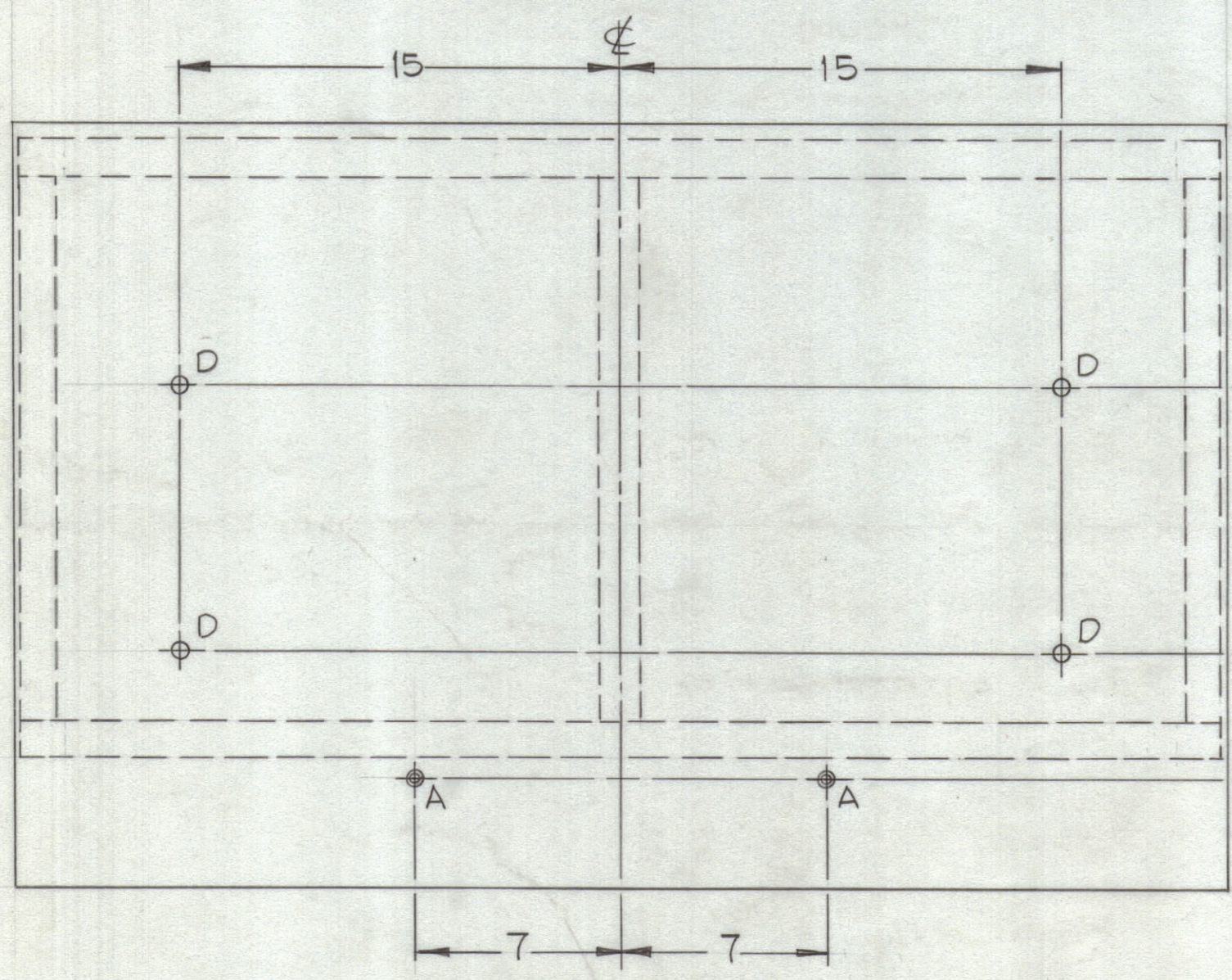
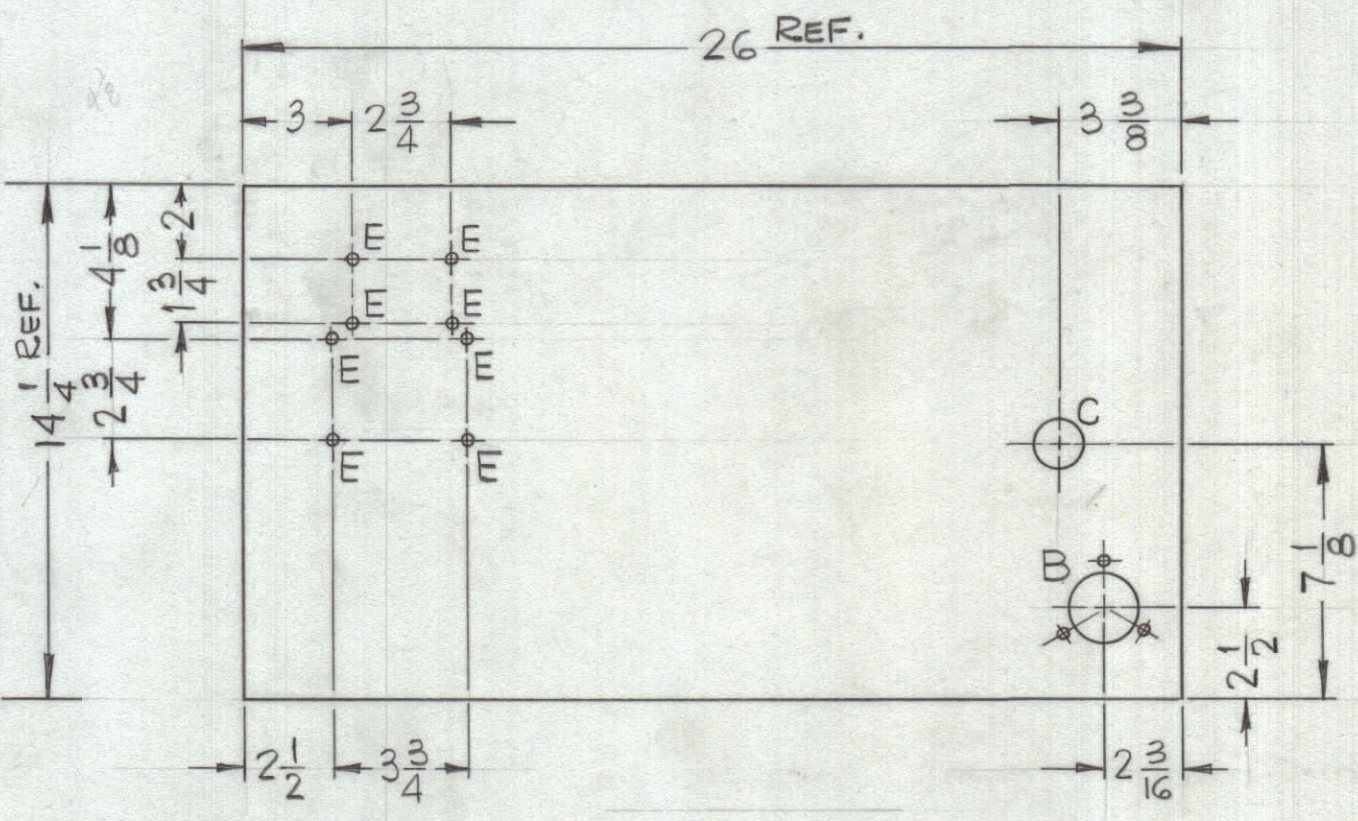
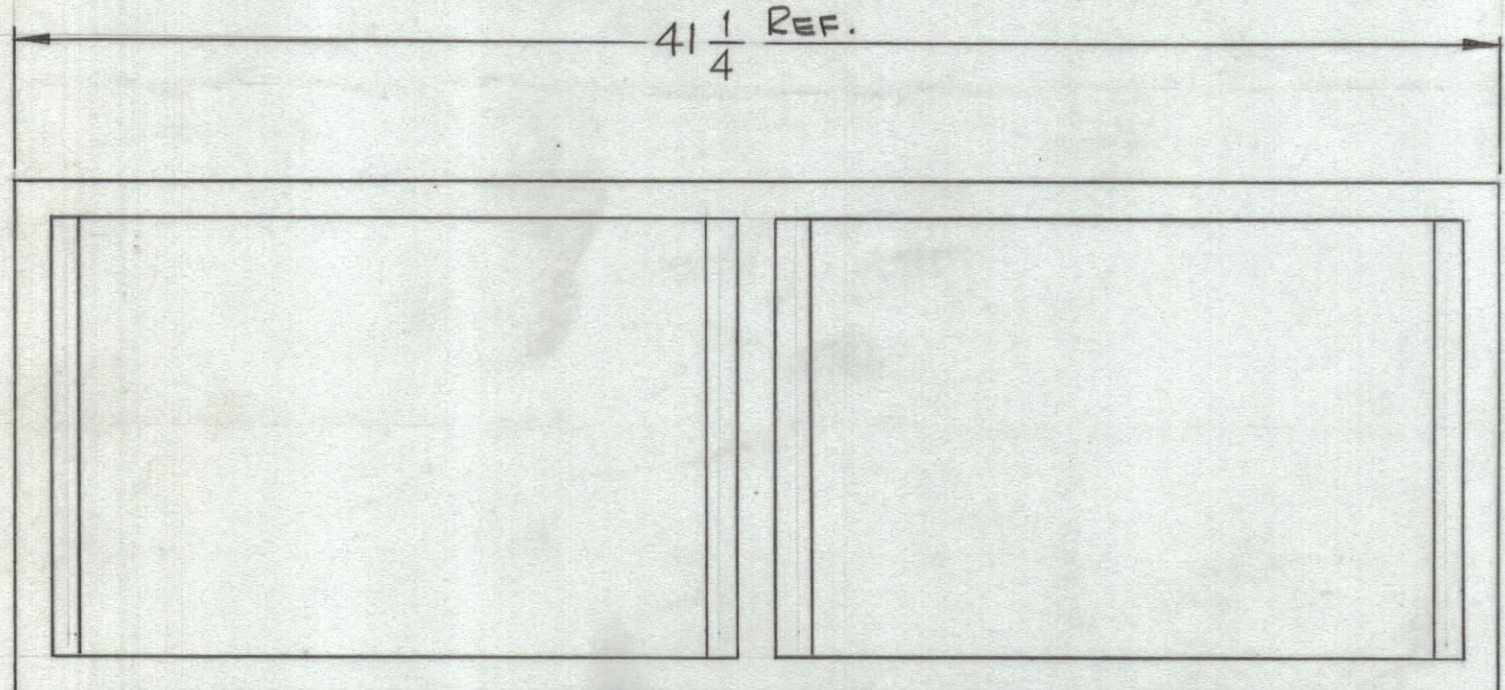
REVISIONS					
ZONE	SYM	DESCRIPTION	DATE	E.M.N. NO.	APPD
	Ø	ORIGINAL RELEASE FOR PRODUCTION	4/6/66		HCA



DETAIL "B"
(1 REQ'D.)

FRONT VIEW

RIGHT SIDE VIEW



BOTTOM VIEW

REF: MS4893

REQ'D.	ITEM	PART NUMBER	DESCRIPTION	SYMBOL
	STURMER LIST OF MATERIAL			
	THE TECHNICAL MATERIEL CORP. MAMARONECK, NEW YORK			
	CABINET, ELEC., EQUIPMENT			
	DRAWN <i>H. Austin</i>		DATE 3-16-66	FINAL APPROVAL <i>[Signature]</i>
	CHECKED <i>[Signature]</i>		DATE 3-16-66	
	ELECT. DES. <i>[Signature]</i>		DATE	
	MECH. DES. <i>[Signature]</i>		DATE 4-6-66	
			SHEET	REV. LTR.

Q'TY./UNIT	MODEL USED ON	ASS'Y. NO.
	CAB-20 A	
SCALE	CODE	
Do Not Scale		
THE CONTENTS OF THIS DRAWING ARE THE EXCLUSIVE PROPERTY OF THE TECHNICAL MATERIEL CORP. ITS UNAUTHORIZED USE OR REPRODUCTION IN WHOLE OR IN PART IS STRICTLY FORBIDDEN.		

NOTES

MS4896