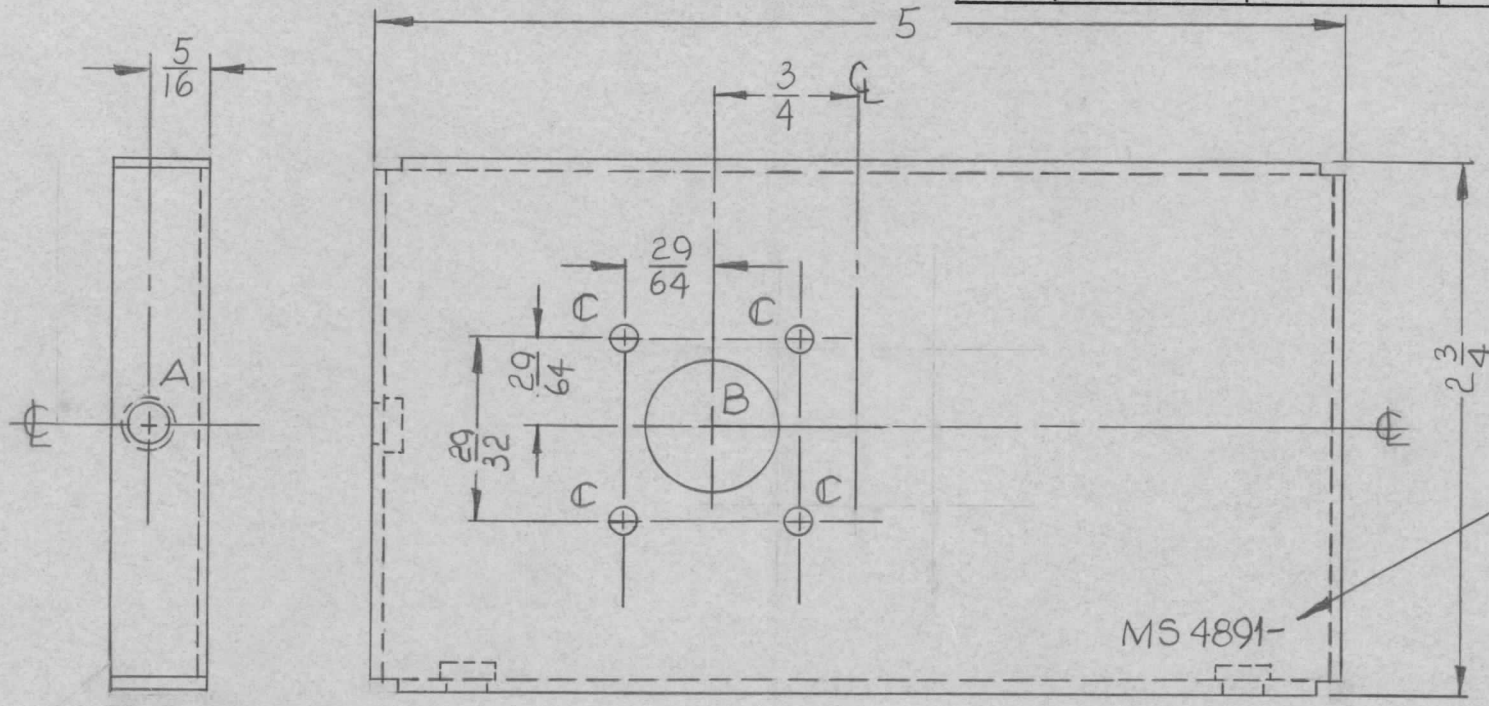


REQ. PER UNIT 2	USED ON		MS4891 $\emptyset$
	MODEL LDF750-3	ASS'Y. NO.	

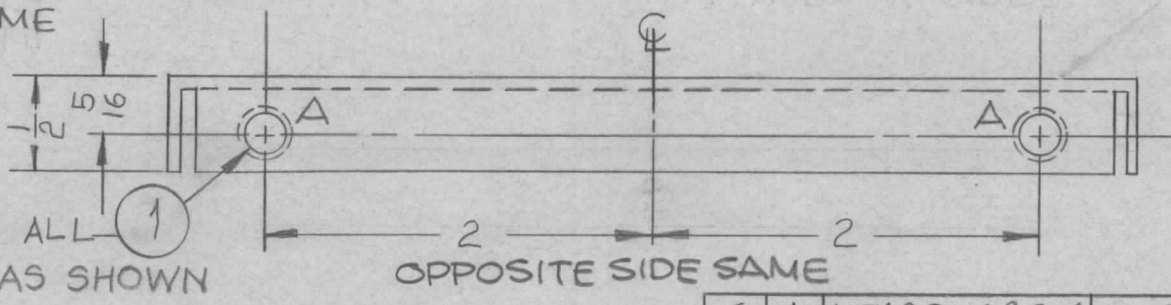


HOLE	DESCRIPTION	REQ'D
A	.191-194 DIA.	6
B	11/16 DIA.	1
C	9/64 DIA.	4

MARK T.M.C. PT. NO.  $\frac{1}{8}$  HIGH GOTHIC W/LALEST. REV. LETTER

MS 4891-

OPPOSITE SIDE SAME



MOUNT IN ALL "A" HOLES AS SHOWN

OPPOSITE SIDE SAME

						6	1	NT129-632-4	NUT, PLAIN, SPLINE	A
						REQ. ITEM		PART NO.	BAKER DESCRIPTION AF106MS-4	SYMBOL
								.062 THICK	THE TECHNICAL MATERIEL CORP. MAMARONECK, NEW YORK	
								STOCK SIZE	PLATE, FILTER NECK	
								ALUMINUM		
								MATERIAL		
								5052-H32	WFW	JCB
								TYPE & TEMPER	HEAT TREAT. SPEC.	FINAL APPROVAL
								YELLOW IRIDITE, S404	RAB	
								FINISH & SPEC. NO.	ELEC. DES. APP.	MECH. DES. APP.
										MS4891 $\emptyset$

UNLESS OTHERWISE SPECIFIED DIMENSIONS ARE IN INCHES AND INCLUDE CHEMICALLY APPLIED OR PLATED FINISHES

SCALE 1:1

DECIMALS  
.X  $\pm$  .05  
.XX  $\pm$  .01  
.XXX  $\pm$  .005

FRACTIONS  
 $\pm$  1/64  
ANGLES  
 $\pm$  0° 30'

TOLERANCES

CODE