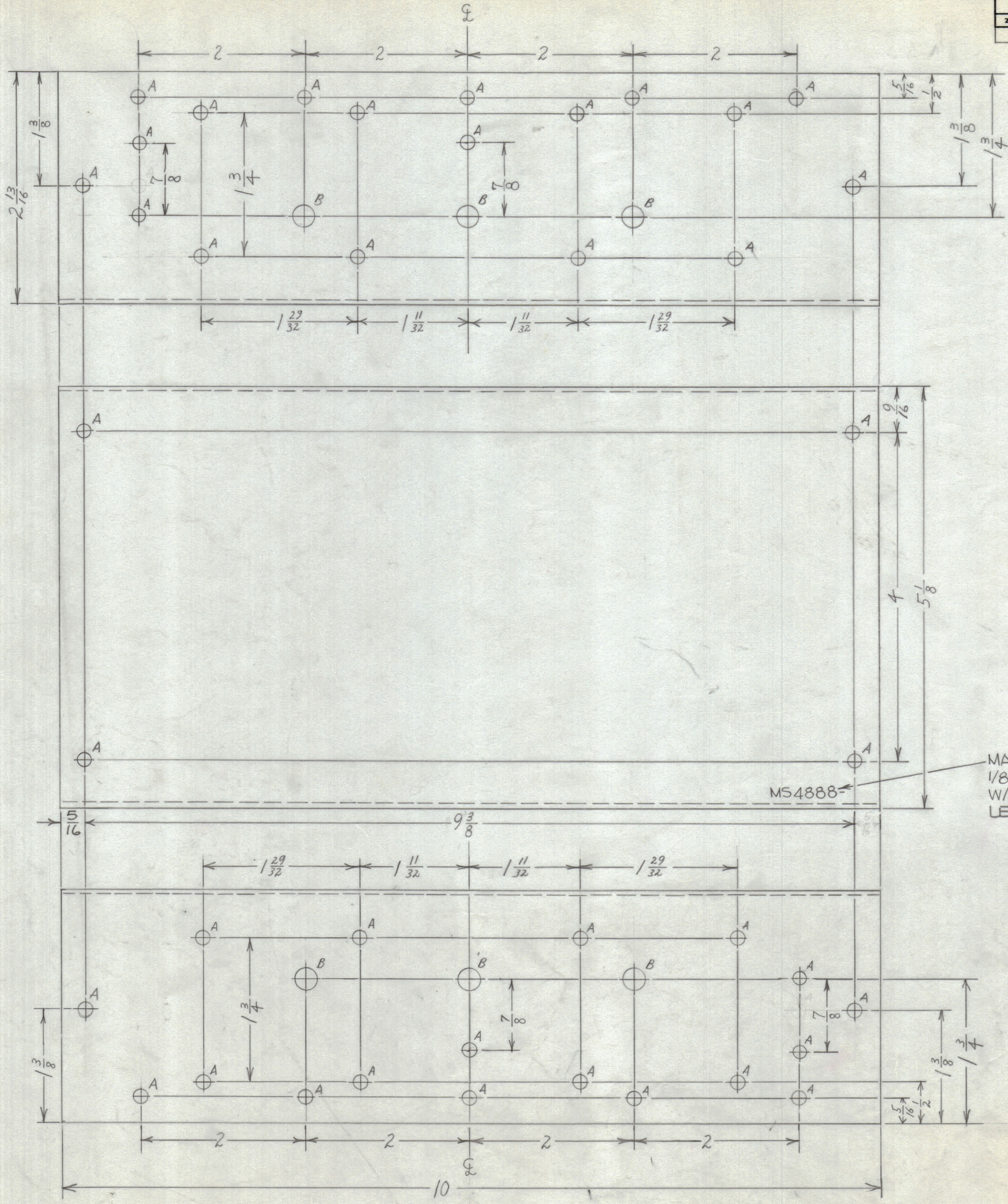


REVISIONS							
ZONE	SYM	DESCRIPTION	DATE	E.M.N. NO.	DRAFT	CHKD	APPD
Ø		ORIGINAL RELEASE FOR PRODUCTION	3/28/66			HCA	



LTR	DESC	REQ
A	11/64 DIA.	40
B	1/4 DIA.	6

MS4888  
 MARK TMC PT. NO.  
 1/8 HIGH GOTHIC  
 W/LATEST REV.  
 LETTER

MS4888  
 Ø

REQ'D.	ITEM	PART NUMBER	DESCRIPTION	SYMBOL
	BAKER	LIST OF MATERIAL	AF106 MS-1	
MATERIAL		THE TECHNICAL MATERIEL CORP. MAMARONECK, NEW YORK		
FINISH		TITLE		
.062 Aluminum, 5052-H32		Yellow Iridite		
CHASSIS, FILTER		CHASSIS, FILTER		
UNLESS OTHERWISE SPECIFIED DIMENSIONS ARE IN INCHES AND INCLUDE CHEMICALLY APPLIED OR PLATED FINISHES	DRAWN	DATE	FINAL APPROVAL	DATE
	3/25/66	3/25/66		3/25/66
DECIMALS	FRACTIONS	ELECT. DES.	MECH. DES.	REV. LTR.
.X ± .05	± 1/64			
.XX ± .01	± 1/64			
.XXX ± .005	± 0° 30'			
TOLERANCES		MS4888		
		SHEET		

Q'TY./UNIT	MODEL USED ON	ASS'Y. NO.
1	LPE75D-3	
SCALE	CODE	
1:1		

NOTES

THE CONTENTS OF THIS DRAWING ARE THE EXCLUSIVE PROPERTY OF THE TECHNICAL MATERIEL CORP. ITS UNAUTHORIZED USE OR REPRODUCTION IN WHOLE OR IN PART IS STRICTLY FORBIDDEN.