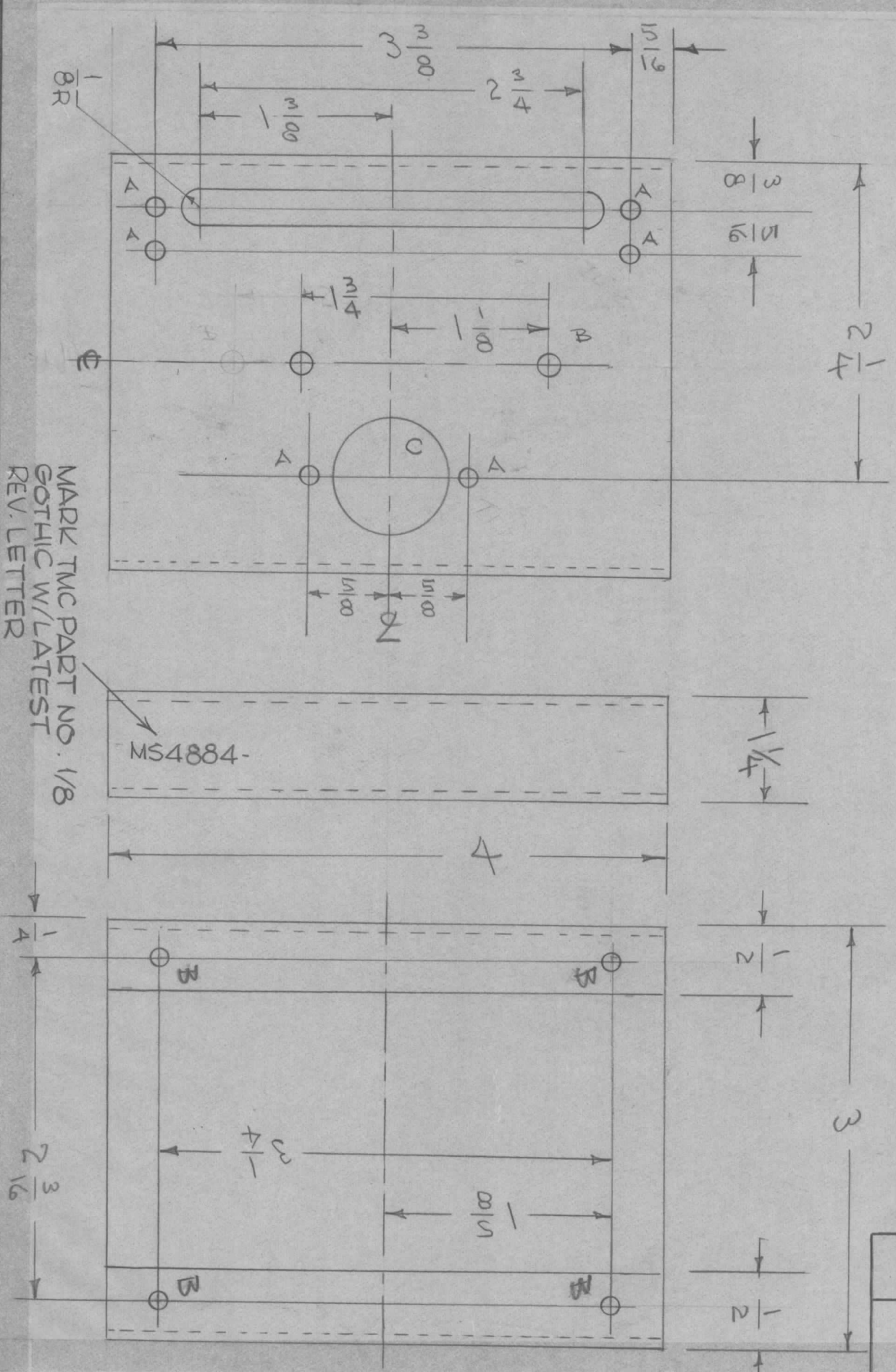


REVISIONS

SYM	DESCRIPTION	DATE	E.M.N. NO.	DRAFT	CHKD	APPD
Ø	ORIGINAL RELEASE FOR PRODUCTION	2-23-64	-	Jc	Q/B	

HOLES
 A - 9/64 DIA.
 B - 11/64 DIA.
 C - 8/32 DIA.

REQ.
 6
 6
 1



REF-TMC DWG. LD2058

REQ'D.	ITEM	PART NUMBER	DESCRIPTION	SYMBOL
	N. CARTER		LIST OF MATERIAL	

MATERIAL .064 THICK,
 ALUMINUM, 5052-H32

FINISH S404-IRIDIOTE

TITLE THE TECHNICAL MATERIEL CORP.
 MAMARONECK, NEW YORK

UNLESS OTHERWISE SPECIFIED	DRAWN	CHECKED	ELECT. DES.	MECH. DES.	DATE	DATE	DATE	DATE	DATE
DIMENSIONS ARE IN INCHES AND INCLUDE CHEMICALLY APPLIED OR PLATED FINISHES	Q/B	Q/B			2-23-64				
DECIMALS .X ± .05 .XX ± .01 .XXX ± .005									
FRACTIONS ± 1/64 ANGLES ± 0° 30'									
UNLESS OTHERWISE SPECIFIED									

QTY./UNIT	1	MODEL USED ON	AZ102-2	ASSY. NO.	
SCALE		CODE			

UNLESS OTHERWISE SPECIFIED:

1. USE MATERIAL THICKNESS FOR MAXIMUM RADIUS ON ALL BENDS
2. ALL ANGULAR BENDS 90 DEGREES
3. REMOVE ALL BURRS AND SHARP EDGES
4. MOUNT INSERTS AFTER FINISHING

NOTES