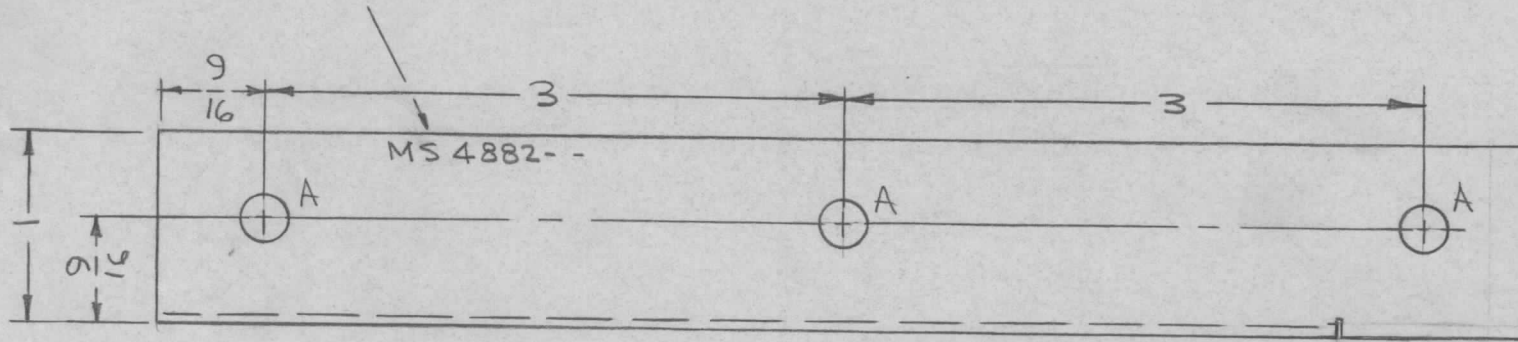
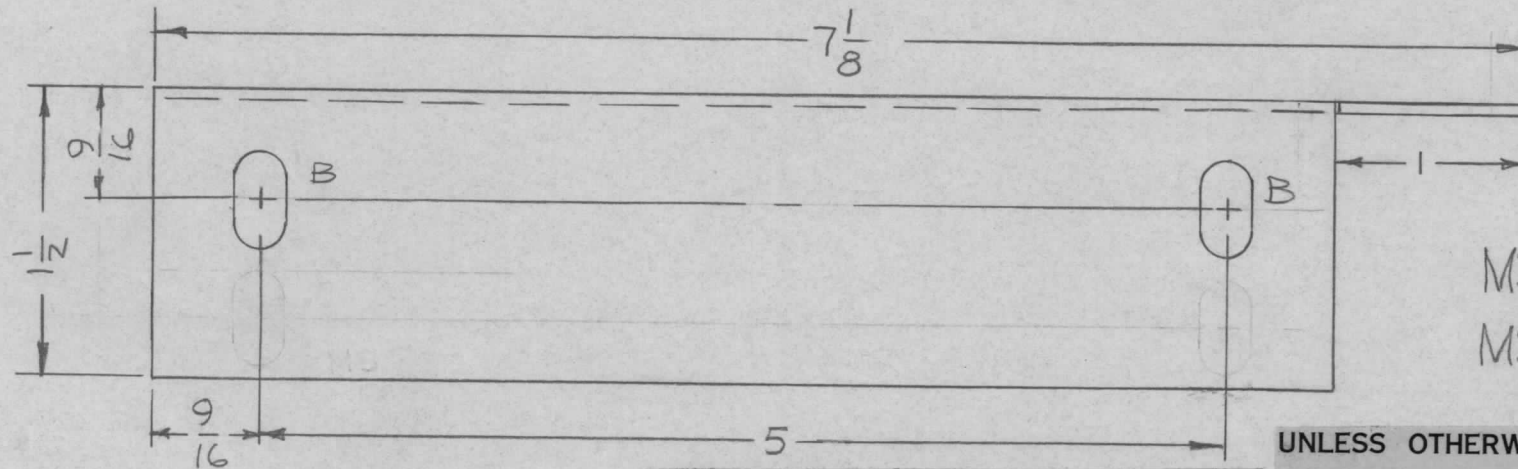


METAL STAMP TMC P/N  
 8/16" HIGH GOTHIC W/LATEST  
 REV. LETTER.

REQ. PER UNIT 1EA	USED ON			MS4882 ∅
	MODEL GPT-40KEC	ASS'Y. NO.	DATE 2-18-66	



HOLES:  
 A - 15/64 DIA. (3)  
 B - 1/4 X 1/2 SLOTS (2)



MS4882-1 AS SHOWN.  
 MS4882-2 OPPOSITE HAND.

UNLESS OTHERWISE SPECIFIED:

FINISH NOTES:

1. DEGREASE
  2. S114 - ZINC CHROMATE PRIMER
  3. S520 - BLUE-GRAY TEXTURED VINYL PAINT
1. USE MATERIAL THICKNESS FOR MAXIMUM RADIUS ON ALL BENDS
  2. ALL ANGULAR BENDS 90 DEGREES
  3. REMOVE ALL BURRS AND SHARP EDGES

							REQ. ITEM	PART NO.	F. BUDETTI DESCRIPTION		SYMBOL
							# 16 GA.		THE TECHNICAL MATERIEL CORP.		
							STOCK SIZE		MAMARONECK, NEW YORK		
							STEEL		BRACKET, ANGLE		
							MATERIAL				
SYM	DESCRIPTION	DATE	CH. NO.	DRAFTS	CHECKER	ENG. APP.					
	UNLESS OTHERWISE SPECIFIED DIMENSIONS ARE IN INCHES AND INCLUDE CHEMICALLY APPLIED OR PLATED FINISHES	SCALE	1:1								
DECIMALS .X ± .05 .XX ± .01 .XXX ± .005	TOLERANCES	FRACTIONS ± 1/64 ANGLES ± 0° 30'	CODE A				TYPE & TEMPER SEE NOTES	HEAT TREAT. SPEC.	DRAWN [Signature]	CHECKED [Signature]	FINAL APPROVAL [Signature]
							FINISH & SPEC. NO.		ELEC. DES. APP.	MECH. DES. APP.	MS4882 ∅