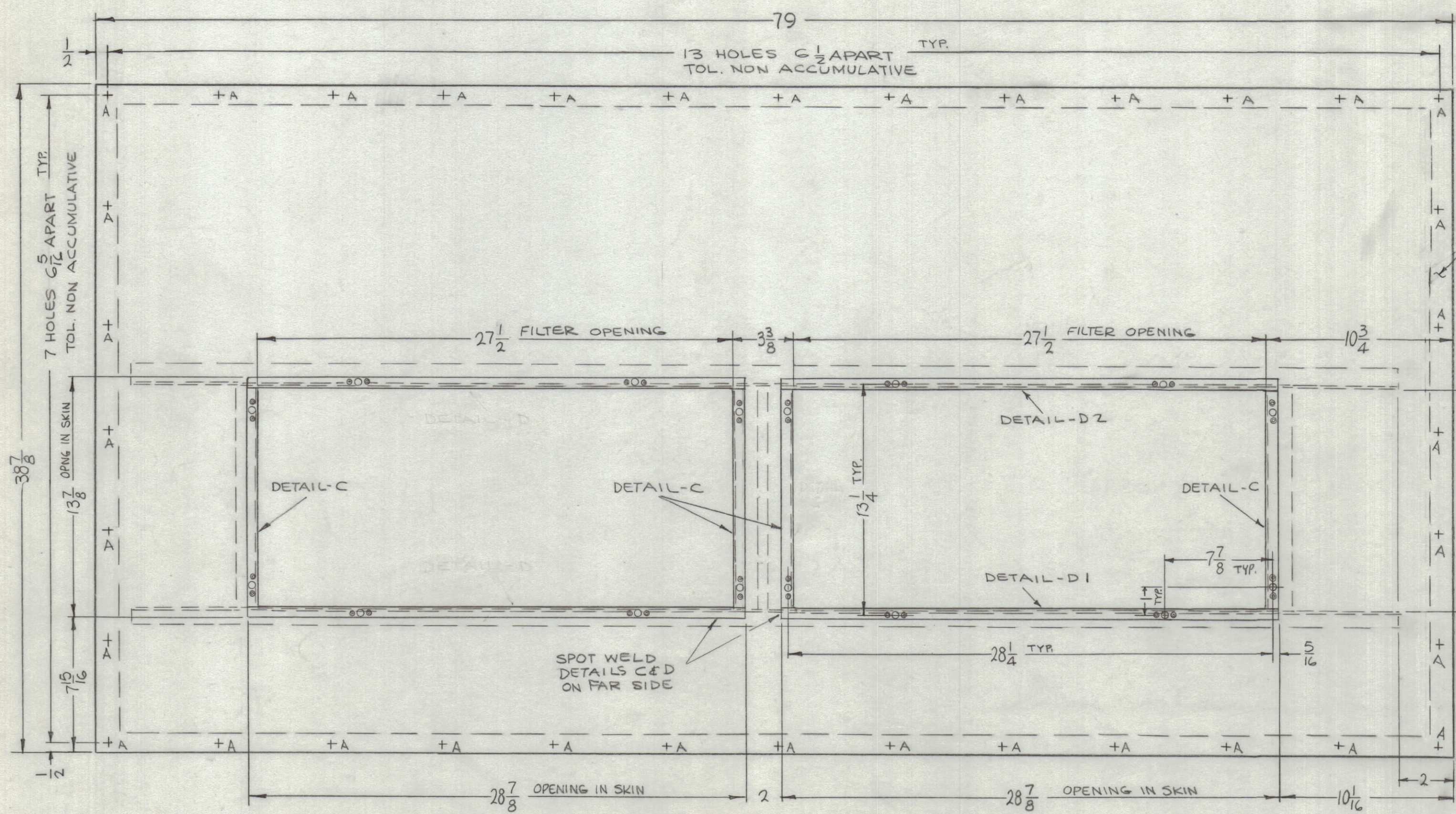


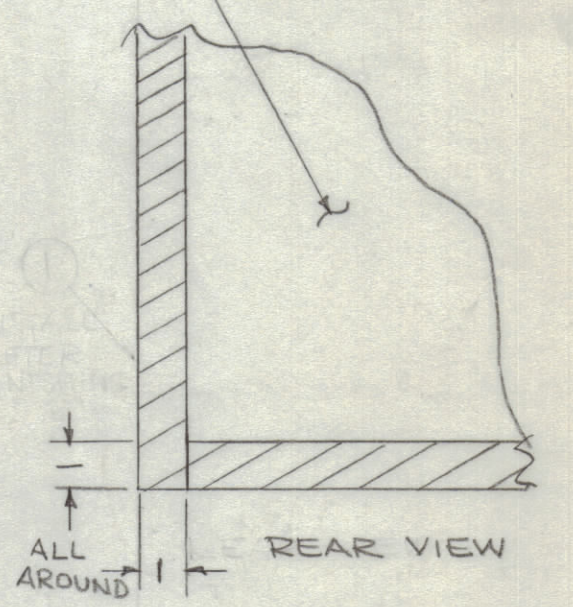
REVISIONS							
ZONE	SYM	DESCRIPTION	DATE	E.M.N. NO.	DRAFT	CHKD	APPD
	Ø	ORIGINAL RELEASE FOR PRODUCTION	3.15.66	Ø	GDL		
	A	CHGD. S 520 TO S523 & VINYL TO VINYL. DELE. TEXTURED	8.17.66	16760	RME		



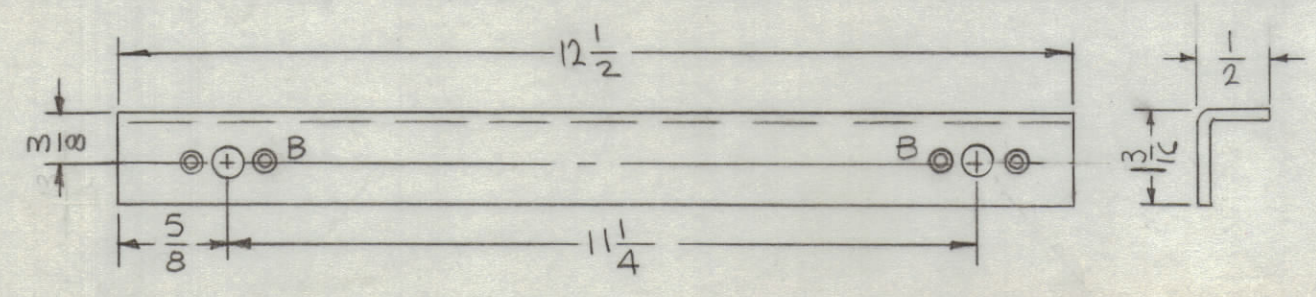
HOLES:
 A - 15/64 DIA. (36)
 B - SEE DETAIL (24)

① INSTALL AFTER FINISHING.

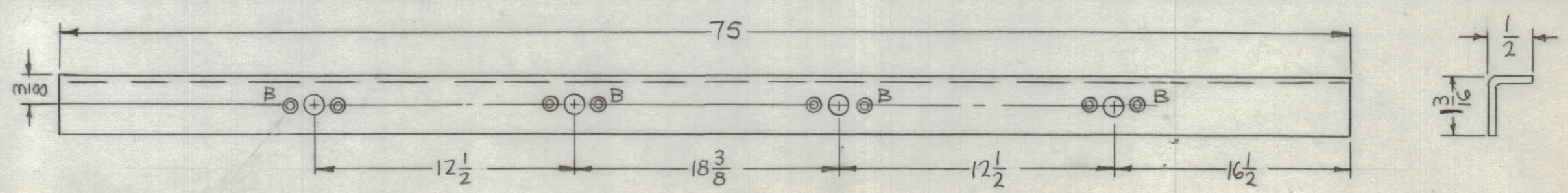
MASK SHADED AREA THEN APPLY HEAVY COAT BLACK LIQUID ENVELOPE BFC # 65-758.



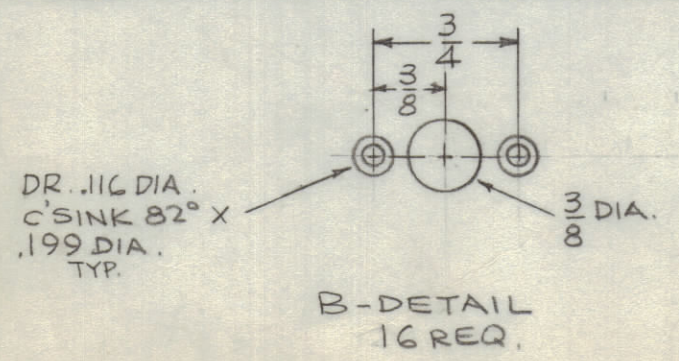
MS 4880
 A



DETAIL - C
 4 REQ.



DETAIL - D1 AS SHOWN (1 REQ)
 DETAIL - D2 OPPOSITE HAND (1 REQ)



B-DETAIL
 16 REQ.

- FINISH NOTES:**
1. DEGREASE
 2. S114 - ZINC CHROMATE PRIMER) FRONT AND EDGES ONLY
 3. S523 - BLU-GRAY VINYL PAINT.

NOTES

THE CONTENTS OF THIS DRAWING ARE THE EXCLUSIVE PROPERTY OF THE TECHNICAL MATERIEL CORP. ITS UNAUTHORIZED USE OR REPRODUCTION IN WHOLE OR IN PART IS STRICTLY FORBIDDEN.

REQ'D.	ITEM	PART NUMBER	DESCRIPTION	SYMBOL
1	1	TA 111-1-8-231.75-G	TAPE, URETHANE	

F. BUDETTI LIST OF MATERIAL

MATERIAL	16 GA. STEEL	THE TECHNICAL MATERIEL CORP. MAMARONECK, NEW YORK	
FINISH	SEE NOTES	TITLE COVER, PLENUM SIDE	

UNLESS OTHERWISE SPECIFIED DIMENSIONS ARE IN INCHES AND INCLUDE CHEMICALLY APPLIED OR PLATED FINISHES	DRAWN	DATE	FINAL APPROVAL	DATE
DECIMALS .X ± .05 .XX ± .01 .XXX ± .005	MECH. DES.	DATE	MS4880	3/15/66
FRACTIONS ± 1/64 ANGLES ± 0° 30'				