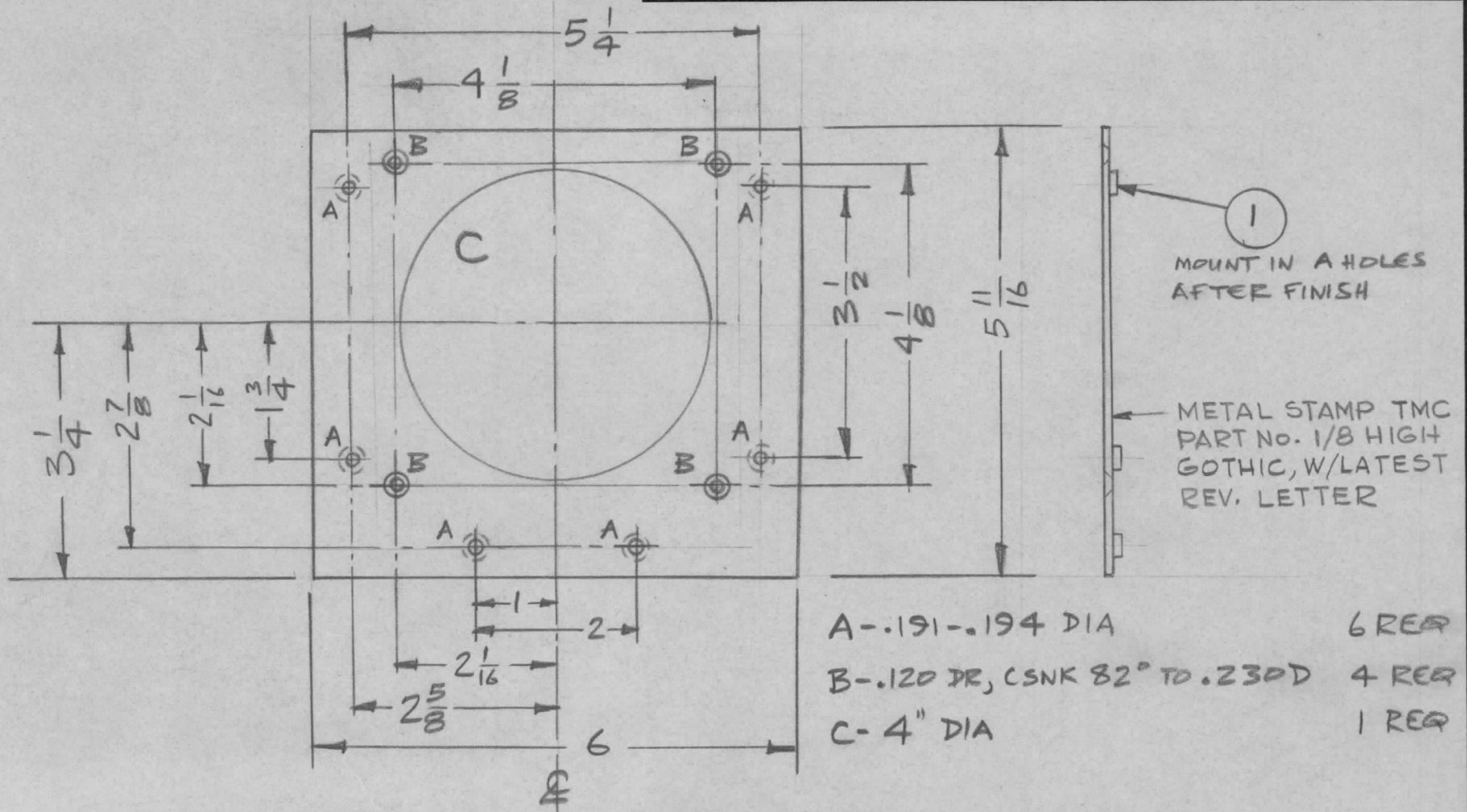


REQ. PER UNIT	USED ON			MS 4869	Ø
	MODEL	ASS'Y. NO.	DATE		
1	TDC-7	A5434	1-17-66		



6	1	NT129-632-4	NUT, PLN, SPLINE	A	
REQ. ITEM	PART NO.		POSE	DESCRIPTION	SYMBOL
	.Ø81		THE TECHNICAL MATERIEL CORP. MAMARONECK, NEW YORK		
	ALUMINUM		PLATE, MTS, FAN		
	5052-H32		MATERIAL		
	TYPE & TEMPER	HEAT TREAT. SPEC.	DRAWN	CHECKED	FINAL APPROVAL
	S4Ø4 YEL. IRIDITE		28 1/17/66	JCB	[Signature]
	FINISH & SPEC. NO.		ELEC. DES. APP.	MECH. DES. APP.	
					MS 4869 Ø

Ø ORIGINAL RELEASE FOR PRODUCTION	3/28/66	—	HLA			
SYM	DESCRIPTION	DATE	CH. NO.	DRAFTS	CHECKER	ENG. APP.
UNLESS OTHERWISE SPECIFIED DIMENSIONS ARE IN INCHES AND INCLUDE CHEMICALLY APPLIED OR PLATED FINISHES		SCALE DO NOT SCALE				
DECIMALS .X ± .05 .XX ± .01 .XXX ± .005	TOLERANCES	FRACTIONS ± 1/64 ANGLES ± 0° 30'	CODE A			