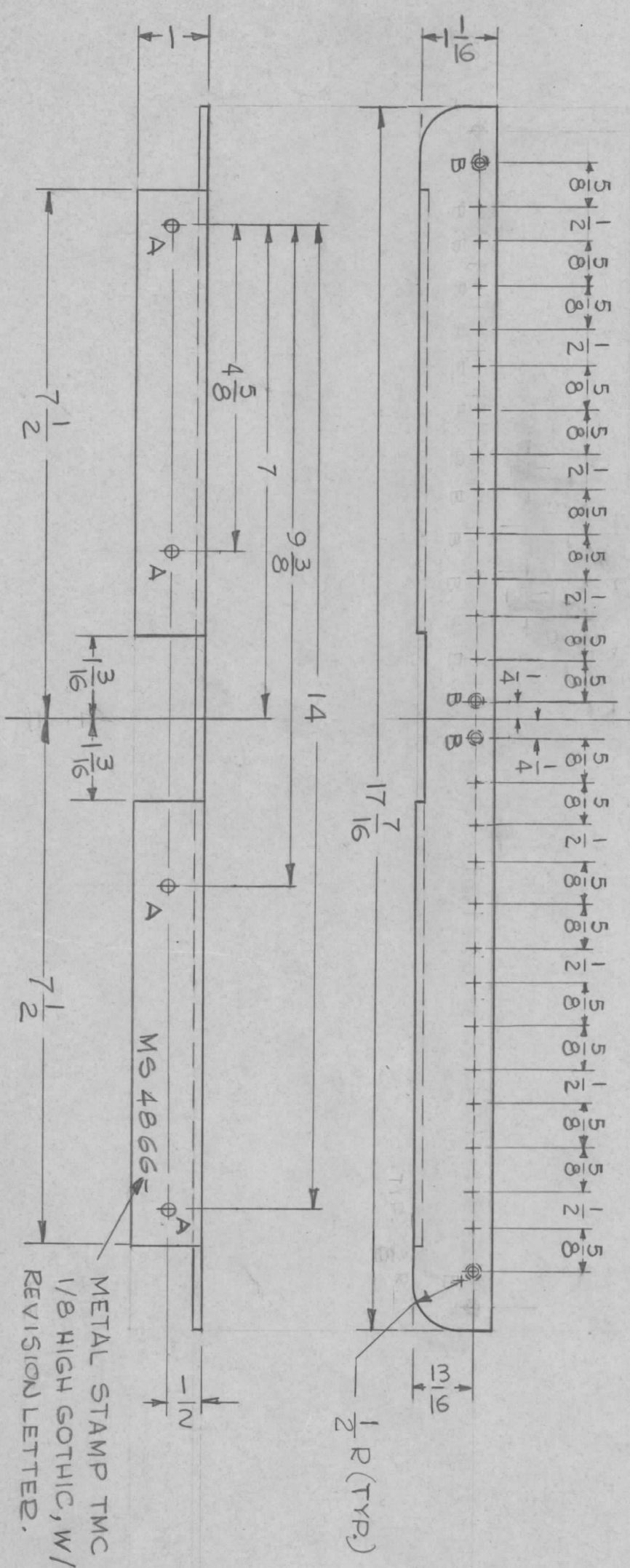


| HOLE | DESCRIPTION                 | REQ |
|------|-----------------------------|-----|
| A    | 9/164 DIA.                  | 4   |
| B    | DRILL & TAP 10-32 NF-2 THD. | 28  |

MS4866 A

| SYM | DESCRIPTION                     | DATE     | E.M.N. NO. | DRAFT | CHKD | APPD |
|-----|---------------------------------|----------|------------|-------|------|------|
| Ø   | ORIGINAL RELEASE FOR PRODUCTION | 3-28-66  | -          | HLA   |      |      |
| A   | "A" HOLE WAS 13/64              | 11-28-66 | 17322      | WJD   | WJD  |      |

STANDARD UNIVERSAL PANEL MOUNTING  
DO NOT ACCUMULATE TOLERANCES.



UNLESS OTHERWISE SPECIFIED:

1. USE MATERIAL THICKNESS FOR MAXIMUM RADIUS ON ALL BENDS
2. ALL ANGULAR BENDS 90 DEGREES
3. REMOVE ALL BURRS AND SHARP EDGES

|           |     |               |       |           |       |
|-----------|-----|---------------|-------|-----------|-------|
| QTY./UNIT | 2   | MODEL USED ON | TOC-7 | ASSY. NO. | A5434 |
| SCALE     | 1:2 | CODE          | A     |           |       |

THE CONTENTS OF THIS DRAWING ARE THE EXCLUSIVE PROPERTY OF THE TECHNICAL MATERIAL CORP. ITS UNAUTHORIZED USE OR REPRODUCTION IN WHOLE OR IN PART IS STRICTLY FORBIDDEN.

| REQ'D. | ITEM     | PART NUMBER               | DESCRIPTION | SYMBOL |
|--------|----------|---------------------------|-------------|--------|
|        | POSE     |                           |             |        |
|        | MATERIAL | 1/8 THK. STEEL            |             |        |
|        | FINISH   | S105 BRIGHT CADMIUM PLATE |             |        |

| LIST OF MATERIAL  |  | TITLE                        |  |
|---|--|------------------------------|--|
| UNLESS OTHERWISE SPECIFIED DIMENSIONS ARE IN INCHES AND INCLUDE CHEMICALLY APPLIED OR PLATED FINISHES |  | THE TECHNICAL MATERIEL CORP. |  |
| TOLERANCES  |  | MAMARONECK, NEW YORK         |  |
| DECIMALS  |  | SUPPORT, FRONT PANEL         |  |
| FRACTIONS   |  |                              |  |
| ANGLES  |  |                              |  |
| ± 0° 30'  |  |                              |  |

| DRAWN  | CHECKED | ELECT. DES. | MECH. DES. | DATE    | DATE    | DATE | DATE |
|--------|---------|-------------|------------|---------|---------|------|------|
| G.D.L. | WJD     |             |            | 2-16-66 | 3-24-66 |      |      |

| FINAL APPROVAL     | DATE    |
|--------------------|---------|
| <i>[Signature]</i> | 3/28/66 |

| REV. LTR. | DATE    |
|-----------|---------|
| A         | 3/28/66 |