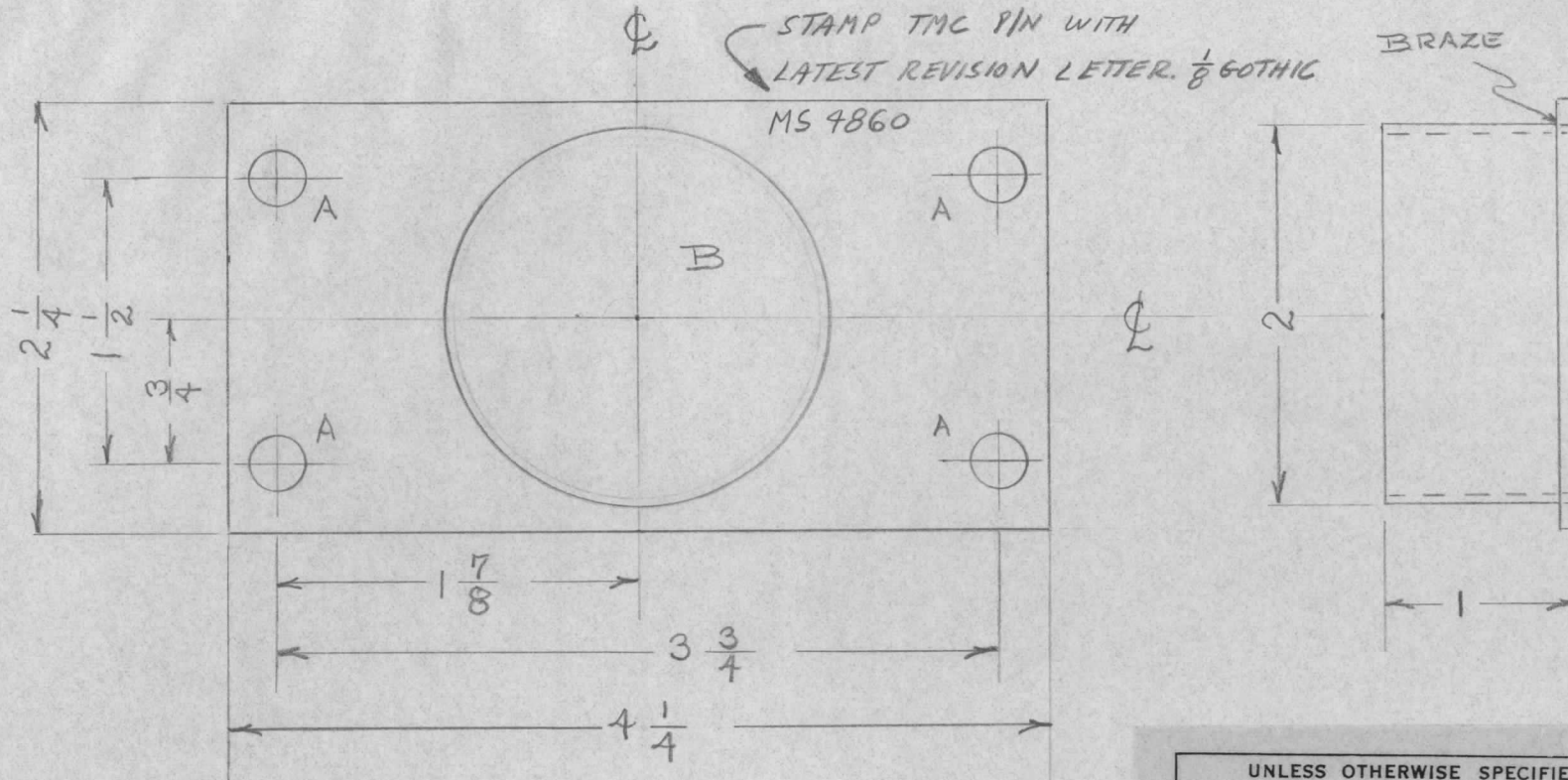


REQ. PER UNIT	USED ON			MS 4860 $\emptyset$
	MODEL	ASS'Y. NO.	DATE	
1	KIT 180			

A -  $\frac{9}{32}$ " DIA. — 4 REQD.  
 B - 2" DIA. — 1 "



S114 - ZINC CHROMATE PRIMER

S197 - BLACK ENAM. SEMI-GLOSS

UNLESS OTHERWISE SPECIFIED  
 DIMENSIONS ARE IN INCHES AND INCLUDE  
 CHEMICALLY APPLIED OR PLATED FINISHES

DECIMALS	TOLERANCES	FRACTIONS
.X $\pm$ .05		$\pm$ 1/64
.XX $\pm$ .01		ANGLES
.XXX $\pm$ .005		$\pm$ 0° 30'

CUT HERE  
 GUARANTEED  
 2-66

REQ. ITEM	PART NO.	DESCRIPTION	SYMBOL
	.062	THE TECHNICAL MATERIEL CORP. MAMARONECK, NEW YORK	
	STOCK SIZE		
	BRASS	BRACKET, HOSE MTC.	
	MATERIAL		
	1/2 HARD	f.s. <i>HO</i> 2/2/66	<i>All Hay</i>
	TYPE & TEMPER	DRAWN	CHECKED
	HEAT TREAT. SPEC.		FINAL APPROVAL
	SEE NOTE	RIP	MS 4860 $\emptyset$
	FINISH & SPEC. NO.	ELEC. DES. APP.	MECH. DES. APP.

TOLERANCES

DEC. DIM.  $\pm$   
 FRAC. DIM.  $\pm$   
 ANGULAR DIM.  $\pm$

SCALE:

MAXIMUM ALLOWABLE TOLERANCES HAVE BEEN DETERMINED AND ANY DEVIATIONS WILL BE CAUSE FOR REJECTION.  
 REMOVE ALL BURRS AND SHARP EDGES