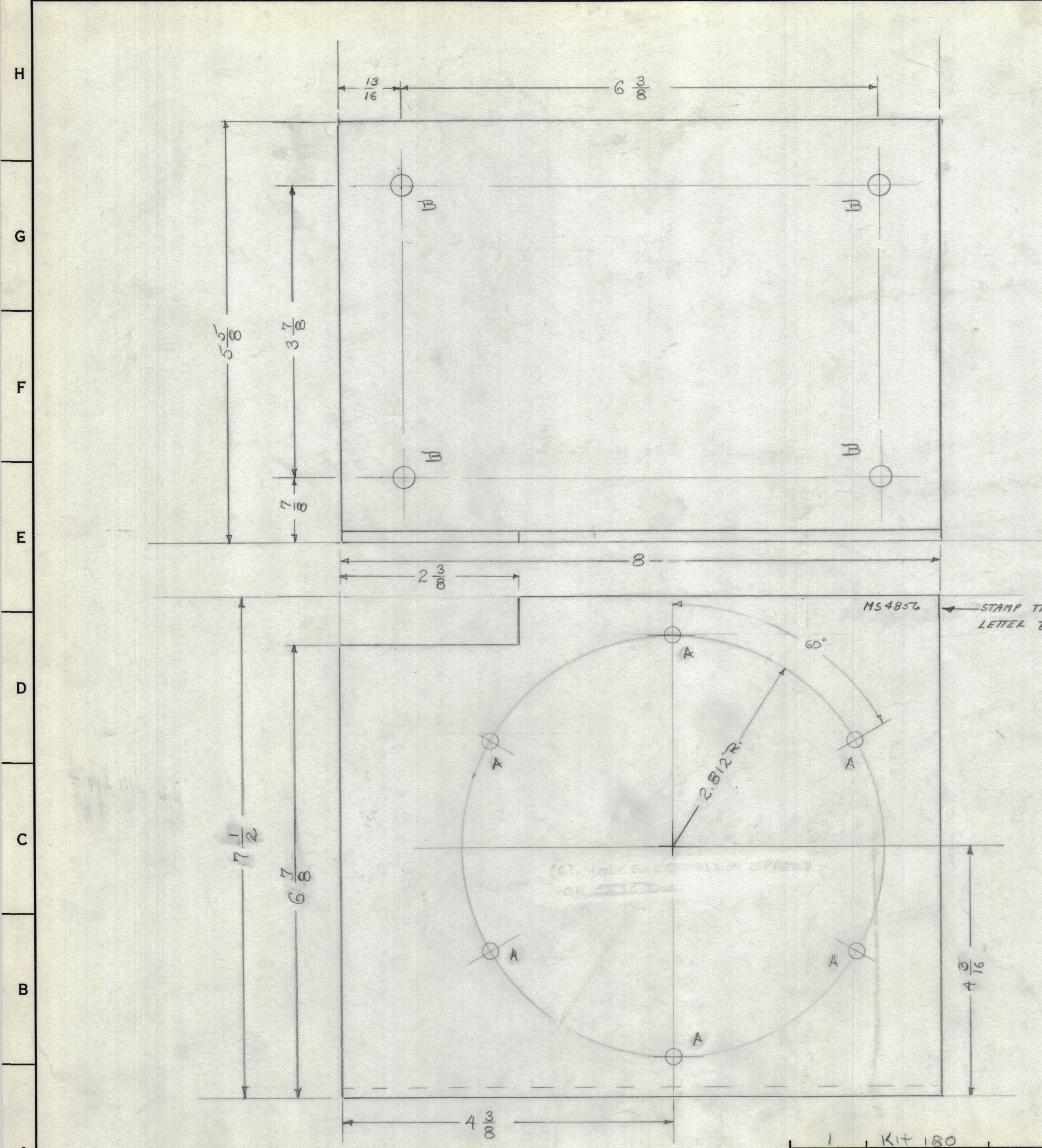


REVISIONS							
ZONE	SYM	DESCRIPTION	DATE	E.M.N. NO.	DRAFT	CHKD	APPD
XI		A hole was 13/64	20 JAN 66				
	Ø	ORIGINAL RELEASE FOR PRODUCTION	2-2-66				

A - 1/2 DIA. — 6 REQ'D.  
 B - 3/32 DIA. — 4 REQ'D.



MS4856 — STAMP THE PIN WITH LATEST REVISION LETTER 1/8 HIGH GOTHIC

MS4856

A

Q'TY/UNIT	MODEL USED ON	ASS'Y. NO.
1	KIT 180	
SCALE	CODE	

THE CONTENTS OF THIS DRAWING ARE THE EXCLUSIVE PROPERTY OF THE TECHNICAL MATERIEL CORP. ITS UNAUTHORIZED USE OR REPRODUCTION IN WHOLE OR IN PART IS STRICTLY FORBIDDEN.

REQ'D.	ITEM	PART NUMBER	DESCRIPTION	SYMBOL
LIST OF MATERIAL				
MATERIAL		THE TECHNICAL MATERIEL CORP. MAMARONECK, NEW YORK		
1/8 ALUMINUM 5052-H32				
FINISH		TITLE		
S404 YEL. IR. DYE		MAIN BLOWER BRACKET FOR 10K SIDE (B-801)		
UNLESS OTHERWISE SPECIFIED DIMENSIONS ARE IN INCHES AND INCLUDE CHEMICALLY APPLIED OR PLATED FINISHES		DRAWN	DATE	FINAL APPROVAL
		F/S	11-29-65	
		CHECKED	DATE	
		JDe	2-2-66	
DECIMALS		ELECT. DES.	DATE	
.X ± .05				
.XX ± .01		MECH. DES.	DATE	
.XXX ± .005		RJP	2/1/66	
FRACTIONS		SHEET		REV. LTR.
± 1/64		MS-4856		Ø
ANGLES				
± 0° 30'				

NOTES