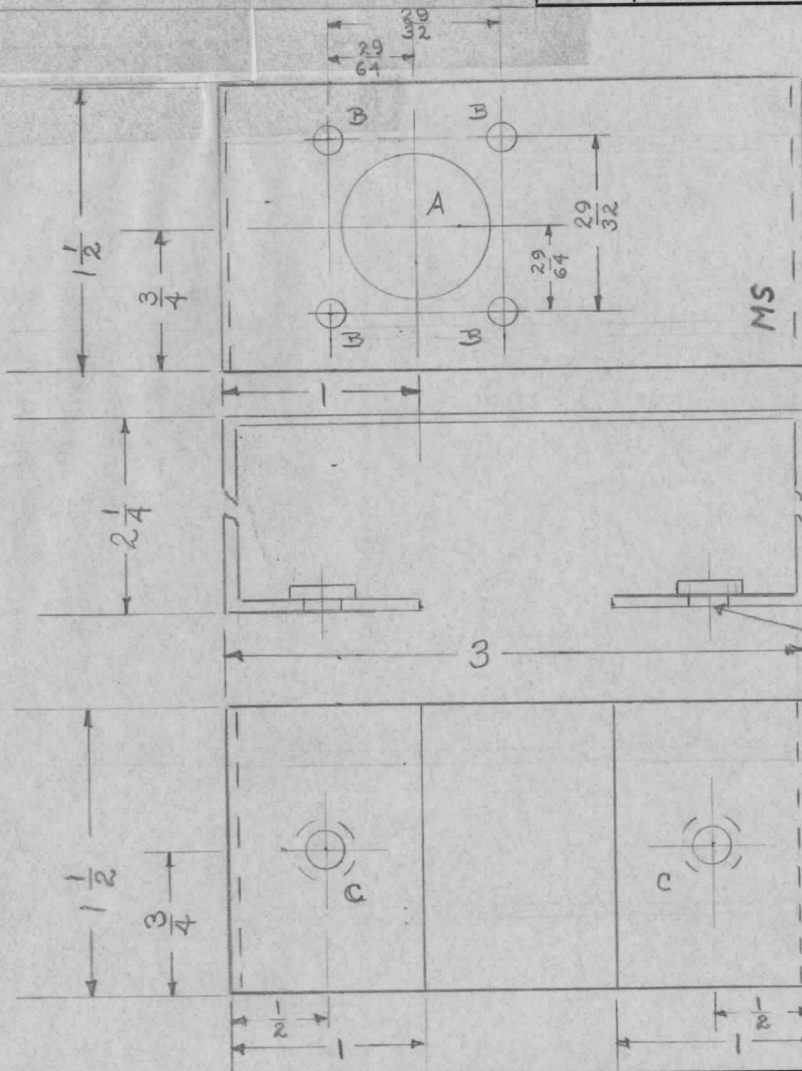


REQ. PER UNIT	USED ON		MS 4852	Ø
	MODEL	ASS'Y. NO.		
1	KIT 180		13 JAN 66	



A - 3/4 DIA. — 1 REQ.  
 B - 9/64 DIA. — 4 "  
 C - .191-.194 DIA. — 2 "

STAMP TMC PIN W/LATEST REVISION LETTER. 1/8 HIGH GOTHIC.

① MOUNT AFTER FINISHING

UNLESS OTHERWISE SPECIFIED DIMENSIONS ARE IN INCHES AND INCLUDE CHEMICALLY APPLIED OR PLATED FINISHES		
DECIMALS	TOLERANCES	FRACTIONS
.X ± .05		± 1/64
.XX ± .01		ANGLES
.XXX ± .005		± 0° 30'

CUT HERE GUARANTEED 2-66

REF: LD 2045  
 ITEM 1 2 REQ'D NT 129-632-4 C

ISSUE	ITEM	CHANGED FROM	DATE	CH. NO.	DRAFTS	CHECKER	ENG. APP.	REQ. ITEM	PART NO.	DESCRIPTION	SYMBOL
									.064	THE TECHNICAL MATERIEL CORP. MAMARONECK, NEW YORK	
									STOCK SIZE		
									ALUM.	BRKT PA FILTER, CONNECTOR	
									MATERIAL		
		ORIGINAL RELEASE	2/2/66						5052-H32	J.S.	J.S. 2/2/66
									TYPE & TEMPER	DRAWN	CHECKED
									HEAT TREAT. SPEC.		FINAL APPROVAL
									S404 Yel. IRIDITE		RJP
									FINISH & SPEC. NO.	ELEC. DES. APP.	MECH. DES. APP.
											MS 4852

DEC. DIM. ±  
 FRAC. DIM. ±  
 ANGULAR DIM. ±

SCALE:  
 MAXIMUM ALLOWABLE TOLERANCES HAVE BEEN DETERMINED AND ANY DEVIATIONS WILL BE CAUSE FOR REJECTION.  
 REMOVE ALL BURRS AND SHARP EDGES