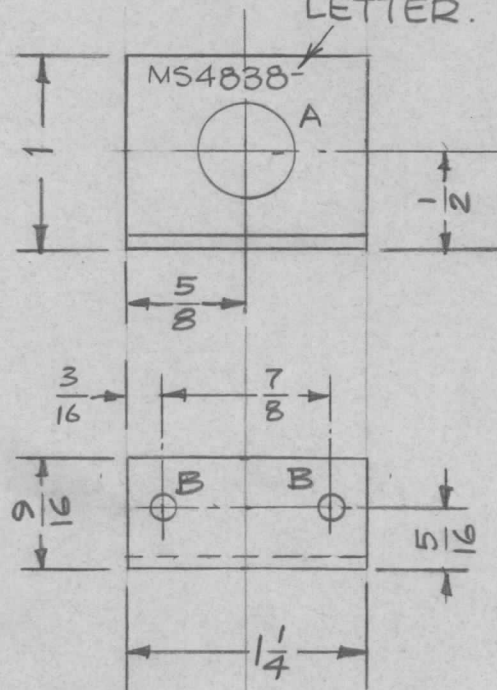


REQ. PER UNIT	USED ON		
	MODEL	ASS'Y. NO.	DATE
1	STR-2C		

MS4838  $\emptyset$

MARK TMC PT. NO.  
1/8 HIGH GOTHIC  
W/LATEST REV.  
LETTER.



A -  $\frac{1}{2} D$  1 REQ

B -  $\frac{11}{64} D$  2 REQ

REF: LD2038

REQ.	ITEM	PART NO.	DESCRIPTION				SYMBOL
		.064	THE TECHNICAL MATERIEL CORP. MAMARONECK. NEW YORK				
		STOCK SIZE	BRKT, MTG, SW				
		ALUM.					
		MATERIAL					
		5052-H32	16	12/16/65	<i>[Signature]</i>	<i>[Signature]</i>	
		TYPE & TEMPER	HEAT TREAT. SPEC.	DRAWN	CHECKED	FINAL APPROVAL	
		S404 IRIDITE					
		FINISH & SPEC. NO.	ELEC. DES. APP.	MECH. DES. APP.	MS4838 $\emptyset$		

$\emptyset$  ORIG. RELEASE 12/20/65  $\emptyset$  *[Signature]*

UNLESS OTHERWISE SPECIFIED  
DIMENSIONS ARE IN INCHES AND INCLUDE  
CHEMICALLY APPLIED OR PLATED FINISHES

SCALE

DECIMALS .X  $\pm$  .05  
.XX  $\pm$  .01  
.XXX  $\pm$  .005

FRACTIONS  $\pm$  1/64  
ANGLES  $\pm$  0° 30'

TOLERANCES

CODE