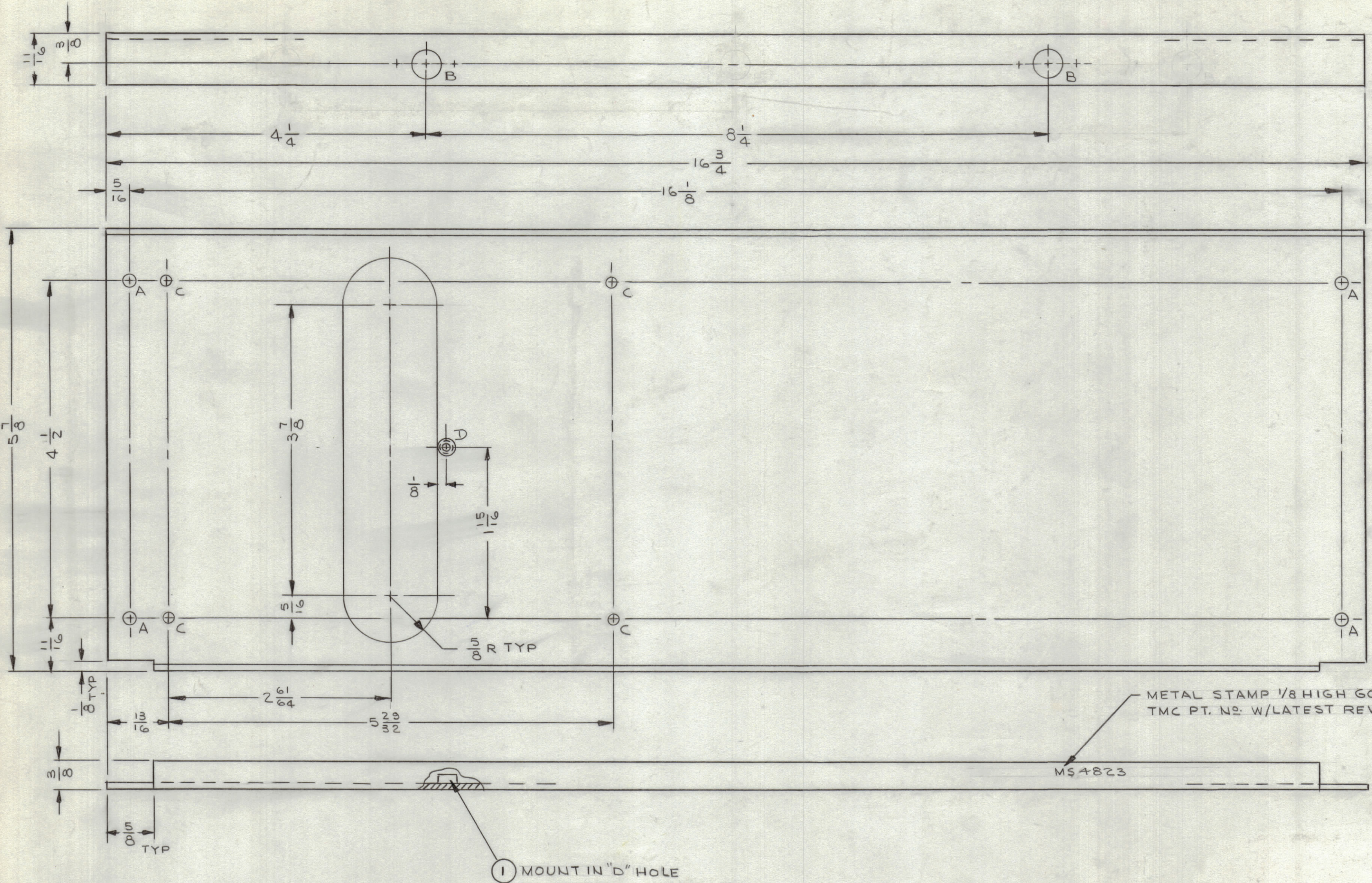


REVISIONS					
ZONE	SYM	DESCRIPTION	DATE	E.M.N. NO.	APPD
H ₆	X ₁	4 1/4 DIM. WAS 2 3/8; 8 1/4 WAS 12.	12/28/64		JL
H ₄	X ₂	ADDED "D" HOLE & ITEM-1	1/10/66		JL
	Ø	ORIGINAL RELEASE FOR PRODUCTION	4-11-66	Ø	WJW



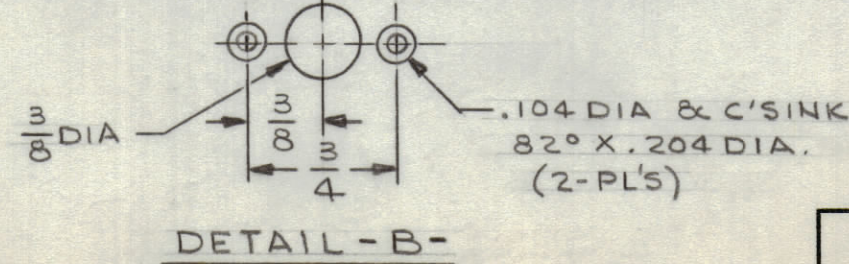
METAL STAMP 1/8 HIGH GOTHIC TMC PT. NO. W/LATEST REV. LETTER

MS4823

1 MOUNT IN "D" HOLE

HOLE LEGEND		
HOLE	DESCRIPTION	REQ'D
A	13/64 DIA	4
B	SEE DETAIL	2
C	11/64 DIA	4
D	.189 DIA	1

- UNLESS OTHERWISE SPECIFIED:
1. USE MATERIAL THICKNESS FOR MAXIMUM RADIUS ON ALL BENDS
 2. ALL ANGULAR BENDS 90 DEGREES
 3. REMOVE ALL BURRS AND SHARP EDGES
 4. MOUNT INSERTS AFTER FINISHING



NOTES

REF. LD2031

1	1	TE 108-7	NUT, PLAIN, CLINCH	D
REQ'D.	ITEM	PART NUMBER	DESCRIPTION	SYMBOL
		F.E. EATON	LIST OF MATERIAL	SK3230-4
MATERIAL		THE TECHNICAL MATERIEL CORP.		
.081 THK ALUMINUM		MAMARONECK, NEW YORK		
5052-H32		TITLE		
FINISH		PLATE, REAR		
YELLOW IRIDITE				
PER S404				
UNLESS OTHERWISE SPECIFIED		DRAWN		
DIMENSIONS ARE IN INCHES AND INCLUDE		J. LESHINSKI		
CHEMICALLY APPLIED OR PLATED FINISHES		DATE		
		11/29/65		
		CHECKED		
		DATE		
		4-5-66		
		ELECT. DES.		
		DATE		
		4/6/66		
		MECH. DES.		
		DATE		
		4/5/66		
DECIMALS		FRACTIONS		
.X ± .05		± 1/64		
.XX ± .01		ANGLES		
.XXX ± .005		± 0° 30'		
SCALE		1/1		
MODEL USED ON		RTPH-1		
ASS'Y. NO.		A5342		
THE CONTENTS OF THIS DRAWING ARE THE EXCLUSIVE PROPERTY		DRAWN		
OF THE TECHNICAL MATERIEL CORP. ITS UNAUTHORIZED USE OR		J. LESHINSKI		
REPRODUCTION IN WHOLE OR IN PART IS STRICTLY FORBIDDEN.		DATE		
		11/29/65		
		CHECKED		
		DATE		
		4-5-66		
		ELECT. DES.		
		DATE		
		4/6/66		
		MECH. DES.		
		DATE		
		4/5/66		
		SHEET		
		MS4823		
		REV. LTR.		
		Ø		

MS4823