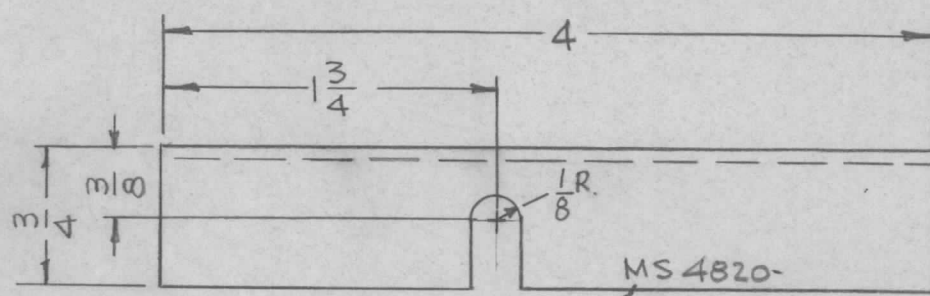
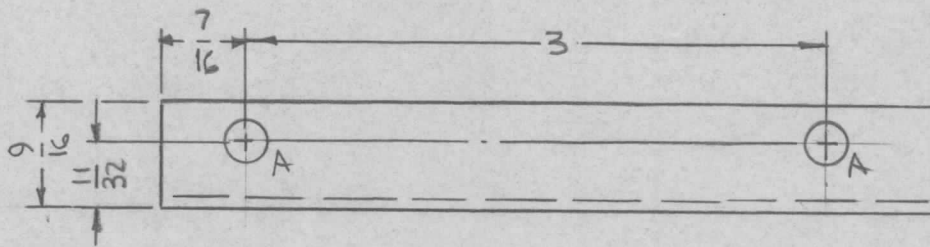
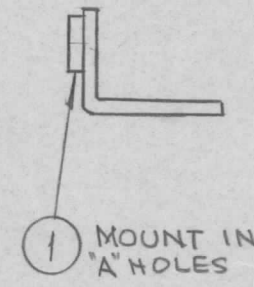


REQ. PER UNIT	USED ON			MS4820	Ø
	MODEL	ASS'Y. NO.	DATE		
1	HVRB-2		11-22-65		



MS 4820-  
 MARK TMC PART NO., 1/8 HIGH GOTHIC W/LATEST REV. LETTER.



HOLES:  
 A-.221-.224 DIA. (2REQ.)

- UNLESS OTHERWISE SPECIFIED:
1. USE MATERIAL THICKNESS FOR MAXIMUM RADIUS ON ALL BENDS
  2. ALL ANGULAR BENDS 90 DEGREES
  3. REMOVE ALL BURRS AND SHARP EDGES
  4. MOUNT INSERTS AFTER FINISHING

							2	1	NT129-832-4	NUT, PLAIN, SPLINE	A					
							REQ. ITEM	PART NO.		F. BUDETTI	DESCRIPTION	SYMBOL				
							.081 THICK		THE TECHNICAL MATERIEL CORP. MAMARONECK, NEW YORK.							
							ALUMINUM		BRACKET, MTG. RESISTOR BOARD							
							MATERIAL									
							5052-H32									
							TYPE & TEMPER		HEAT TREAT. SPEC.		DRAWN		CHECKED		FINAL APPROVAL	
							S404 YEL. IRIDITE								MS4820 Ø	
							FINISH & SPEC. NO.		ELEC. DES. APP.		MECH. DES. APP.					
UNLESS OTHERWISE SPECIFIED DIMENSIONS ARE IN INCHES AND INCLUDE CHEMICALLY APPLIED OR PLATED FINISHES			SCALE				1:1									
DECIMALS .X ± .05 .XX ± .01 .XXX ± .005			FRACTIONS ± 1/64 ANGLES ± 0° 30'			CODE A										
TOLERANCES																