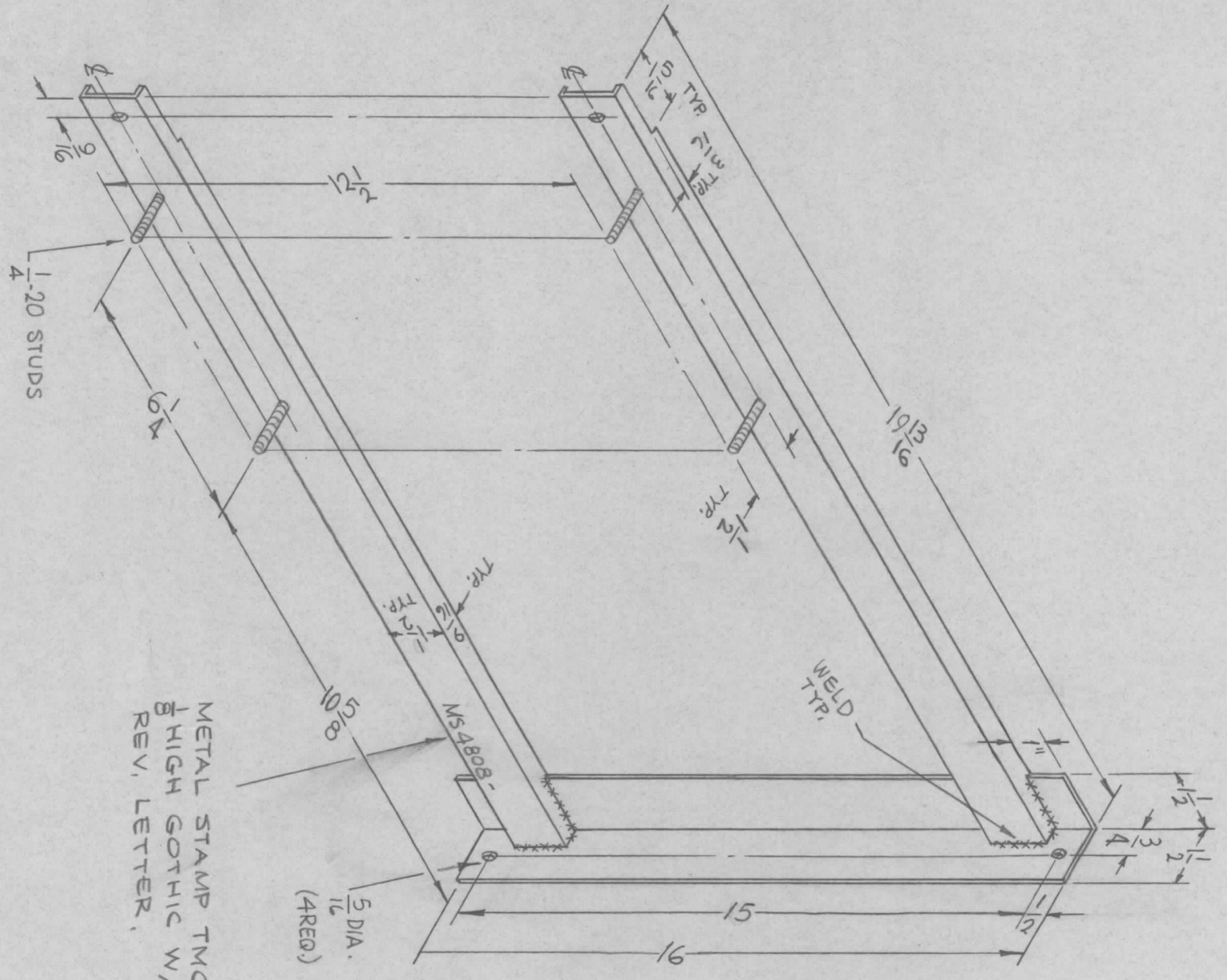


MS4808

REVISIONS				
SYM	DESCRIPTION	DATE	E.M.N. NO.	DRAFT
Ø	ORIGINAL RELEASE FOR PRODUCTION	5/19/67	Ø	CV



METAL STAMP TMC P/N  
1/8 HIGH GOTHIC W/LATEST  
REV, LETTER.

QTY./UNIT	1	GPT-AOK EF (MOD)	MODEL USED ON	ASSY. NO.
SCALE		C	CODE	

THE CONTENTS OF THIS DRAWING ARE THE EXCLUSIVE PROPERTY OF THE TECHNICAL MATERIEL CORP. ITS UNAUTHORIZED USE OR REPRODUCTION IN WHOLE OR IN PART IS STRICTLY FORBIDDEN.

REQ'D. ITEM	PART NUMBER	DESCRIPTION	SYMBOL
F. BUDETTI		LIST OF MATERIAL	
MATERIAL	3/16 THICK HRS	THE TECHNICAL MATERIEL CORP.	
FINISH	COPPER FLASH	MAMARONECK, NEW YORK	
		TITLE	
		MOUNT, CIRCUIT BREAKER	

UNLESS OTHERWISE SPECIFIED DIMENSIONS ARE IN INCHES AND INCLUDE CHEMICALLY APPLIED OR PLATED FINISHES			
DECIMALS	TOLERANCES	FRACTIONS	ANGLES
.X ± .05		± 1/64	
.XX ± .01		± 1/64	
.XXX ± .005		± 0° 30'	

DRAWN	CHECKED	ELECT. DES.	MECH. DES.	DATE	DATE	DATE	DATE
				11-12-65			

FINAL APPROVAL	DATE
<i>[Signature]</i>	5/19/67

NOTES