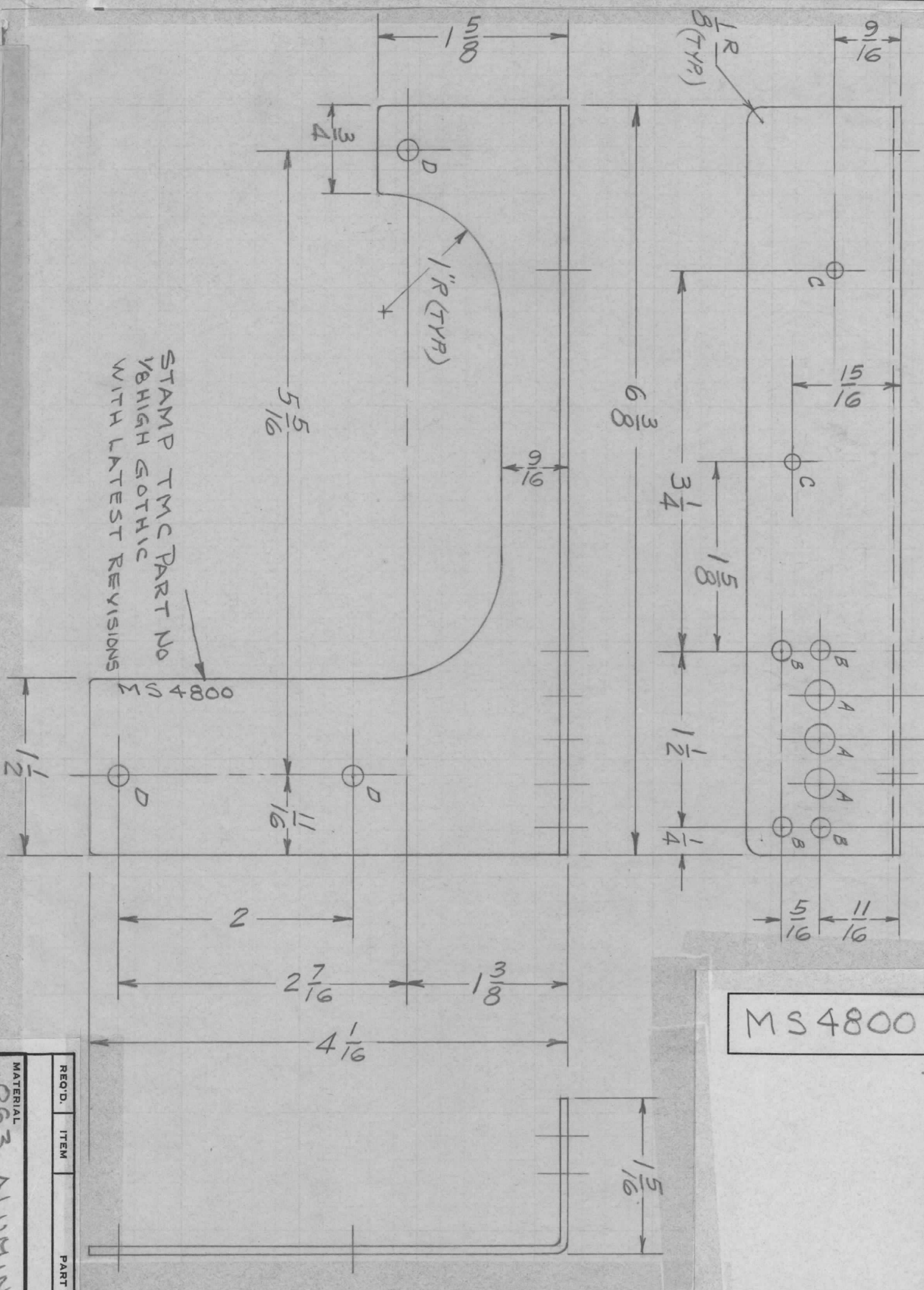


SYM	DESCRIPTION	DATE	E.M.N. NO.	DRAFT	CHKD	APPD
Ø	ORIGINAL RELEASE FOR PROD.	11/18/65	Ø	gco		

REVISIONS

- A - 1/4 DIA 3 REQ
- B - 11/64 DIA 4 REQ
- C - 5/64 DIA 2 REQ
- D - 3/16 DIA 3 REQ

MS 4800



STAMP TMC PART NO
VEHIGH GOTHIC
WITH LATEST REVISIONS

UNLESS OTHERWISE SPECIFIED:

1. USE MATERIAL THICKNESS FOR MAXIMUM RADIUS ON ALL BENDS
2. ALL ANGULAR BENDS 90 DEGREES
3. REMOVE ALL BURRS AND SHARP EDGES

NOTES

QTY./UNIT	1	MODEL USED ON	ATS-2A	ASSY. NO.	
SCALE		CODE			

MATERIAL	.003 ALUMINUM 5052-H32
FINISH	S404 YELLOW IRIDITE
DECIMALS	.X ± .05
FRACTIONS	± 1/64
TOLERANCES	± .01
	± .005

TITLE		THE TECHNICAL MATERIEL CORP. MAMARONECK, NEW YORK	
DRAWN	DATE	FINAL APPROVAL	DATE
CHECKED	DATE		
ELECT. DES.	DATE		
MECH. DES.	DATE		
		MS 4800	
			REV. LTR.

LIST OF MATERIAL

REQ'D.	ITEM	PART NUMBER	DESCRIPTION	SYMBOL

REF: LD 2016