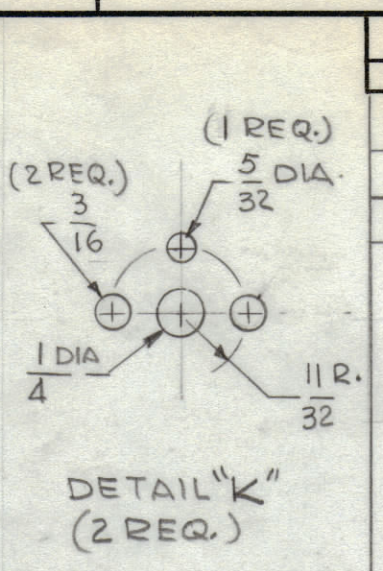
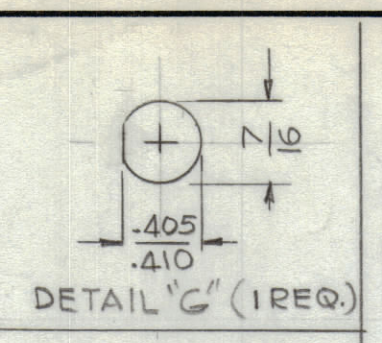
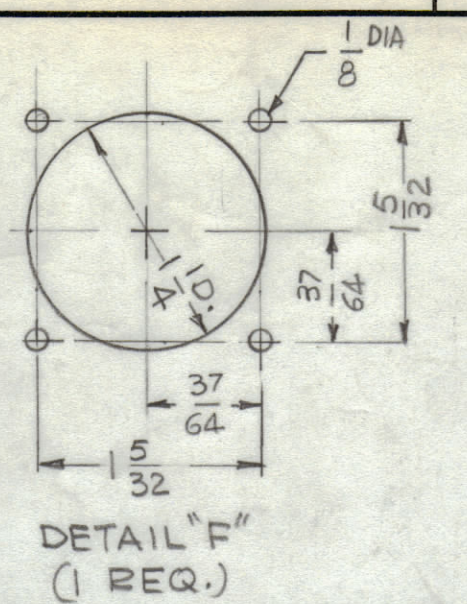
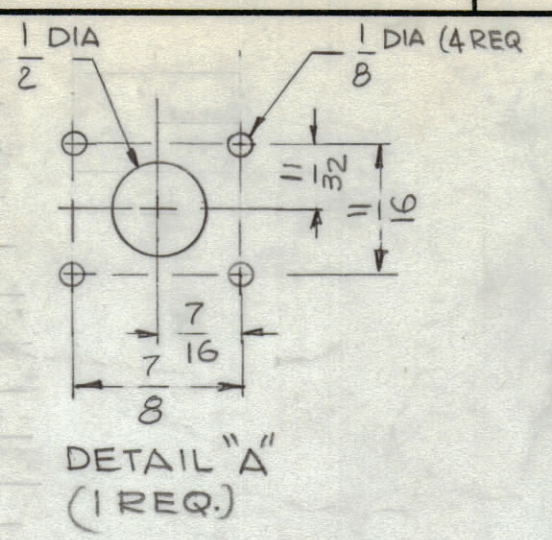
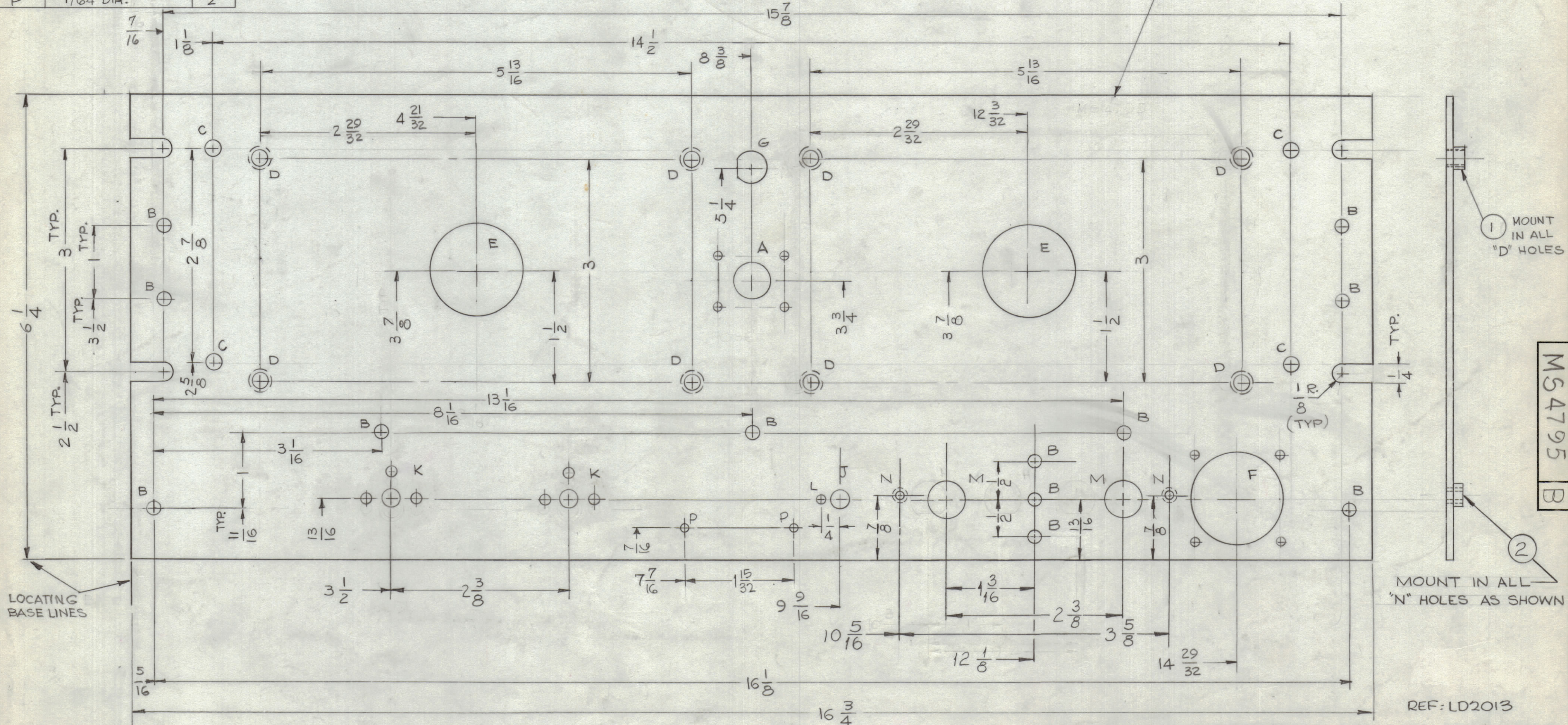


HOLE	DESCRIPTION	REQ'D
A	SEE DETAIL	1
B	11/64 DIA.	12
C	7/32 DIA.	4
D	.221-.224 DIA.	8
E	1 1/4 DIA.	2
F	SEE DETAIL	1
G	SEE DETAIL	1
H	SEE DETAIL	Ø
J	1/4 DIA.	1
K	SEE DETAIL	2
L	1/8 DIA.	1
M	1/2 DIA.	2
N	.191-.194 DIA.	2
P	7/64 DIA.	2



REVISIONS						
ZONE	SYM	DESCRIPTION	DATE	E.M.N. NO.	DRAFT	CHKD
	Ø	ORIGINAL RELEASE FOR PRODUCTION	11/9/65	Ø	H.V.V.	
A		IT 2 ADDED. QTY "B" HOLES WERE 9. "M" & "N" HOLES ADDED. "H" HOLES DEL.	3-31-66	16046	W.P.W.	
B		ADDED TWO (2) "P" HOLES (to Pict. & CHART)	5-2-66	16193	W.L.A.	

METAL STAMP TMC PART No. 1/8 HIGH GOTHIC WITH LATEST REV. LETTER, ON REAR



MS4795 B

REF: LD2013

REMOVE ALL BURRS AND SHARP EDGES  
MOUNT INSERTS AFTER FINISHING.

REQ'D	ITEM	PART NUMBER	DESCRIPTION	SYMBOL
2	2	NT129-632-4	NUT PLAIN, SPLINE	N
8	1	NT129-832-4	NUT PLAIN, SPLINE	D

MATERIAL		THE TECHNICAL MATERIEL CORP.	
.081 THK ALUM. 5052-H32		MAMARONECK, NEW YORK	
FINISH		TITLE	
S404 YEL. IRIDITE		PLATE, REAR	
DRAWN	G.D.L.	DATE	11/8/65
CHECKED	[Signature]	DATE	11/16/65
ELECT. DES.	[Signature]	DATE	11/10/65
MECH. DES.	[Signature]	DATE	11/12/65

Q'TY./UNIT	MODEL USED ON	ASS'Y. NO.
1	TPSG-1	A5296
SCALE	CODE	
1:1	A	