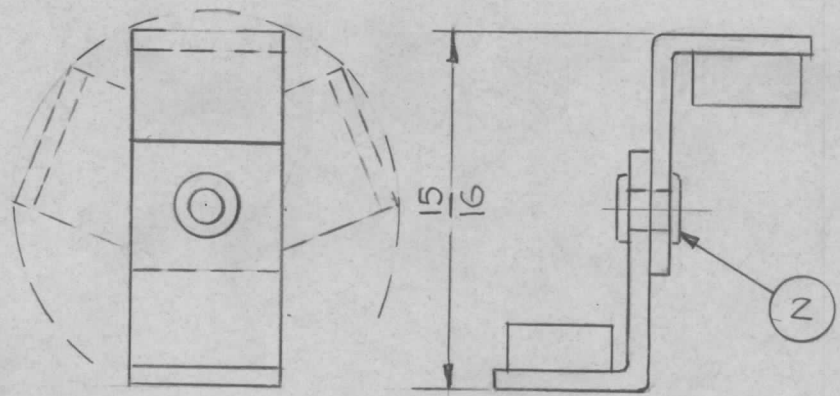
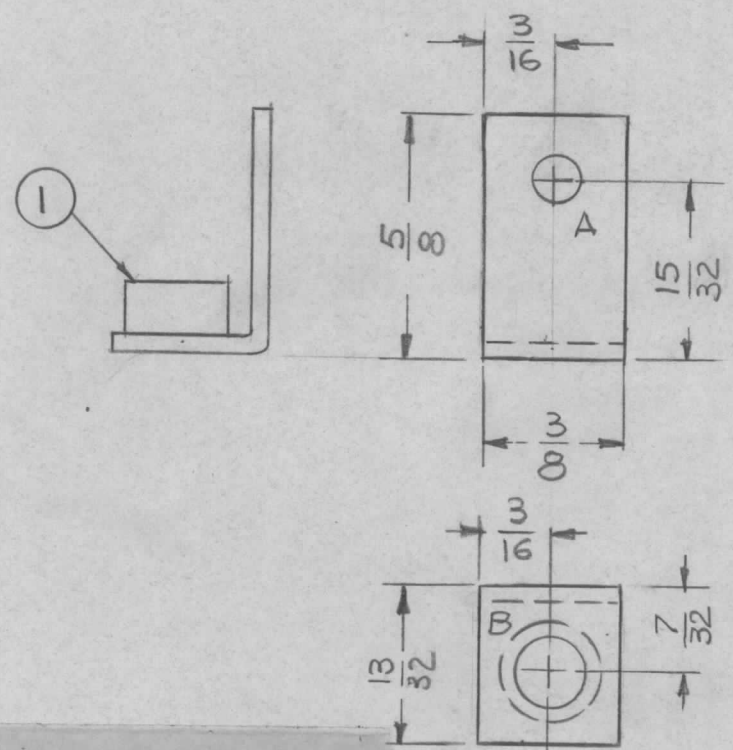


HOLE	DESCRIPTION	REQ.
A	1/8 DIA	1
B	.191 - .194 DIA	1

REQ. PER UNIT	USED ON		
	MODEL	ASS'Y. NO.	DATE
4	TPSG-1	AX 5297	11-9-65

MS 4793  $\emptyset$

NOTE: HINGE ACTION MUST BE LOOSE



- ASS'Y DETAIL -

UNLESS OTHERWISE SPECIFIED:

1. USE MATERIAL THICKNESS FOR MAXIMUM RADIUS ON ALL BENDS
2. ALL ANGULAR BENDS 90 DEGREES
3. REMOVE ALL BURRS AND SHARP EDGES
4. MOUNT INSERTS AFTER FINISHING

1	2	EY 100-1	EYELET	A	
2	1	NT 129-632-3	NUT, PLAIN, SPLINE	B	
REQ. ITEM	PART NO.		POSE	DESCRIPTION	SYMBOL
.051 THK.			THE TECHNICAL MATERIEL CORP.		
STOCK SIZE			MAMARONECK, NEW YORK		
ALUMINUM			BRACKET, HINGE		
MATERIAL					
5052-H32		G.D.L. 11-5-65		J.C. [Signature]	
TYPE & TEMPER		HEAT TREAT. SPEC.		DRAWN	
3404 YEL. IRIDITE				CHECKED	
FINISH & SPEC. NO.		ELEC. DES. APP.		MECH. DES. APP.	
				MS 4793 $\emptyset$	

SYM	DESCRIPTION	DATE	CH. NO.	DRAFTS	CHECKER	ENG. APP.
$\emptyset$	ORIGINAL RELEASE	11/9/65	$\emptyset$	X.V.V.		
UNLESS OTHERWISE SPECIFIED DIMENSIONS ARE IN INCHES AND INCLUDE CHEMICALLY APPLIED OR PLATED FINISHES		SCALE 2:1				
DECIMALS .X $\pm$ .05 .XX $\pm$ .01 .XXX $\pm$ .005		FRACTIONS $\pm$ 1/64 ANGLES $\pm$ 0° 30'		CODE A		
TOLERANCES						