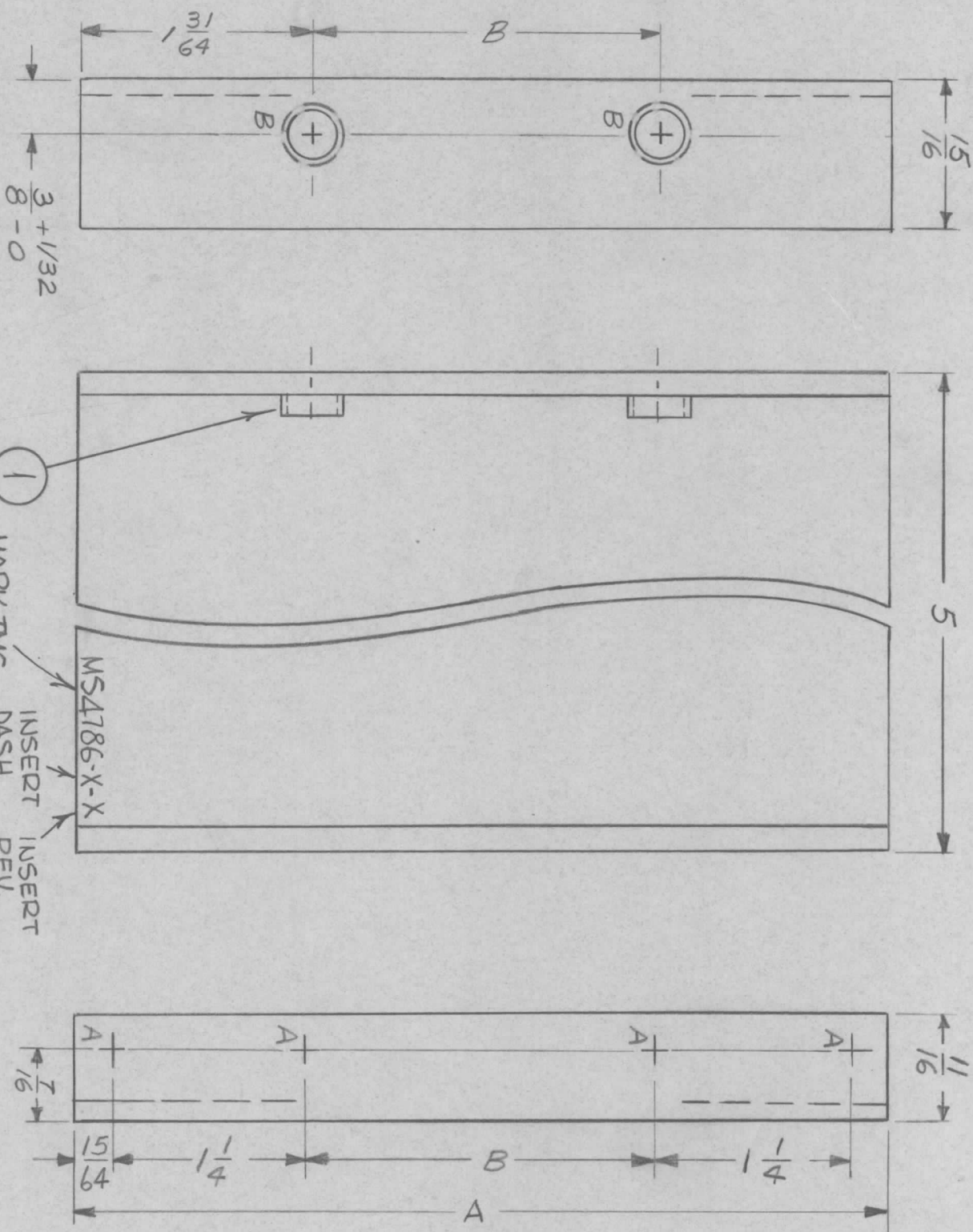


HOLE	DESCRIPTION	REQ.
A	15/64 DIA.	4
B	.250-.253 DIA.	2

TMC PART NUMBER	A	B
MS4786-1	5 7/32	2 1/4
MS4786-2	8 23/32	5 3/4

MS4786

SYM	DESCRIPTION	DATE	E.M.N. NO.	DRAFT	CHKD	APPD
X1	IT. 1 WAS SM107-56, "A" HOLES WERE 13/64 DIA	11/4/65		JC		
Ø	ORIGINAL RELEASE FOR PRODUCTION	11/4/65		AVR		



MS4786-1 AS SHOWN
MS4786-2 OPPOSITE

NOTES

Q'TY./UNIT	MODEL USED ON	ASS'Y. NO.
2	KIT 272	
2	KIT 271	

SCALE

THE CONTENTS OF THIS DRAWING ARE THE EXCLUSIVE PROPERTY OF THE TECHNICAL MATERIAL CORP. ITS UNAUTHORIZED USE OR REPRODUCTION IN WHOLE OR IN PART IS STRICTLY FORBIDDEN.

REQ'D.	ITEM	PART NUMBER	DESCRIPTION	SYMBOL
2	1	NT129-1032-6	NUT, PLN. SPLINE	

MATERIAL	FINISH	TITLE
1/8 ALUM.	SEE NOTES	BRACKET, MTG, SIDE EXT.

UNLESS OTHERWISE SPECIFIED	DRAWN	DATE	FINAL APPROVAL	DATE
DIMENSIONS ARE IN INCHES AND INCLUDE CHEMICALLY APPLIED OR PLATED FINISHES	DR. VENEZIAN	10/29/65	[Signature]	11/4/65
DECIMALS	CHECKED	DATE		
.X ± .05	ELECT. DES.	DATE		
.XX ± .01	MECH. DES.	DATE		
.XXX ± .005				

FINISH NOTES:

- S404 - IRIDITE 14-2 AL-COAT.
- S114 - ZINC CHROMATE PRIMER
- S115 - SMOOTH GRAY ENAMEL

OR

PRIME AND PAINT PER CUSTOMER'S SPECIFICATIONS.

UNLESS OTHERWISE SPECIFIED:

- USE MATERIAL THICKNESS FOR MAXIMUM RADIUS ON ALL BENDS
- ALL ANGULAR BENDS 90 DEGREES
- REMOVE ALL BURRS AND SHARP EDGES
- MOUNT INSERTS AFTER FINISHING

THE TECHNICAL MATERIAL CORP.

MAMARONECK, NEW YORK