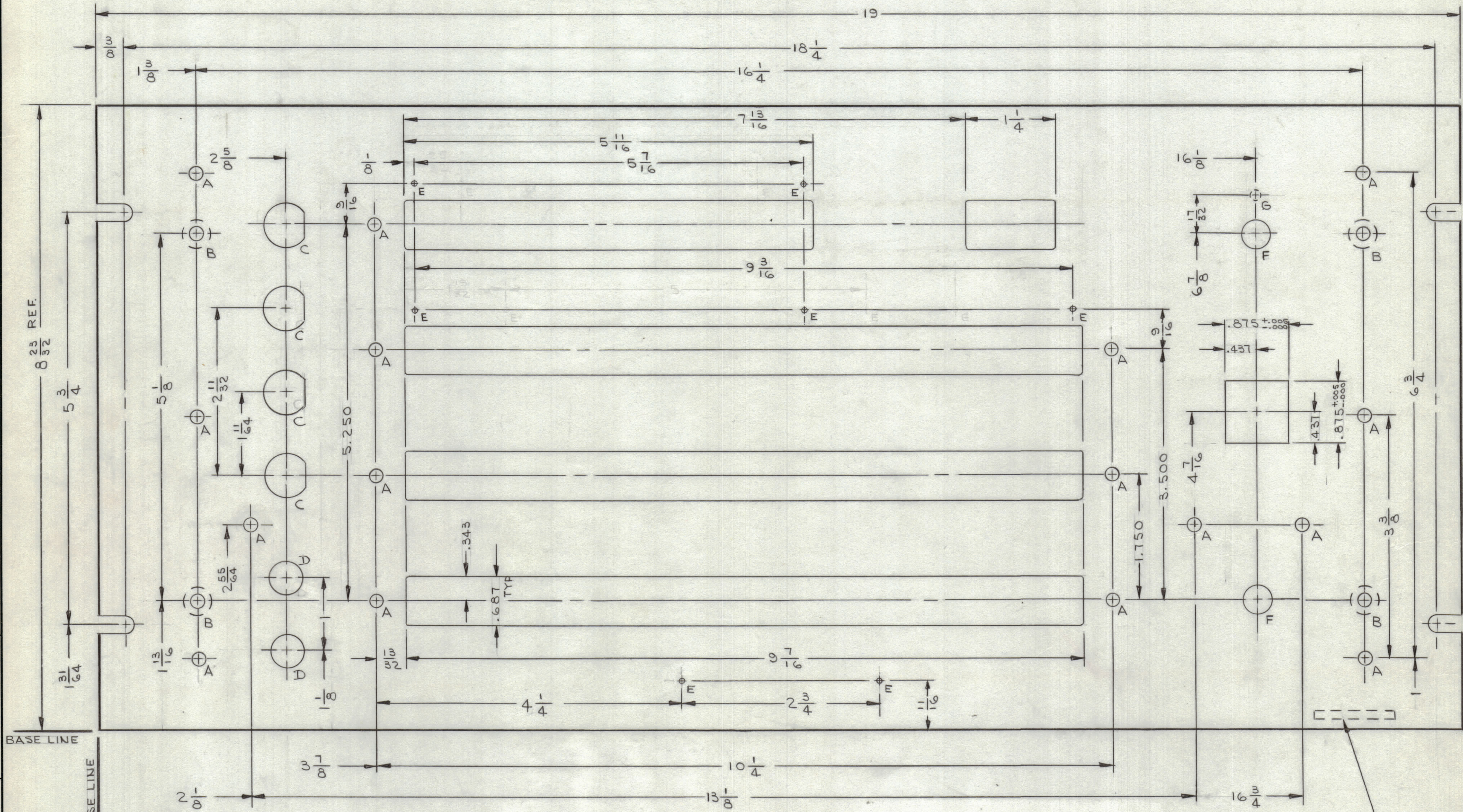


REVISIONS							
ZONE	SYM	DESCRIPTION	DATE	E.M.N. NO.	DRAFT	CHKD	APPD
		ORIGINAL RELEASE FOR PRODUCTION	4-11-66	Ø	WV		JL

-FRONT VIEW SHOWN-



MS4772 Ø

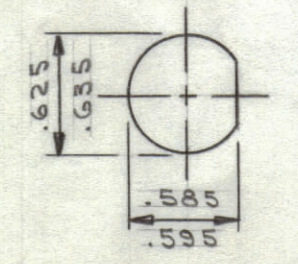
HOLE LEGEND		
HOLE	DESCRIPTION	REQ'D
A	13/64 DIA	16
B	.196 DIA & C'SINK 82° X .390 DIA (#10-32) F.H.	4
C	SEE DETAIL	4
D	15/32	2
E	NO. 48 (.0760) DRILL	7
F	13/32 DIA	2
G	5/32 DIA X 1/8 DP (ON REAR)	1

**MACHINING:**

- MILL ALL EDGES.
- HOLE MUST BE DRILLED, UNLESS OTHERWISE SPECIFIED.
- LATERAL BOW OF PANEL MUST BE KEPT TO .031 TOLERANCE.
- PANEL MUST BE FREE OF ALL MACHINING MARKS, GOUGES AND SCRATCHES. IF NECESSARY, SAND FRONT OF PANEL WITH NO. 120 GRIT SANDPAPER.

**FINISH NOTES:**

- S404 - IRIDITE 14-2 AL-COAT.
- S114 - ZINC CHROMATE PRIMER ) FRONT AND
- S115 - SMOOTH GRAY ENAMEL ) EDGES ONLY



DETAIL-C-

REF. LD2004

REQ'D.	ITEM	PART NUMBER	DESCRIPTION	SYMBOL
F. E. EATON LIST OF MATERIAL SK3230-1				
MATERIAL 3/16 THK ALUMINUM 2024-T3			THE TECHNICAL MATERIEL CORP. MAMARONECK, NEW YORK	
FINISH SEE NOTES			TITLE PANEL, FRONT	
UNLESS OTHERWISE SPECIFIED DIMENSIONS ARE IN INCHES AND INCLUDE CHEMICALLY APPLIED OR PLATED FINISHES			DRAWN J. LESHINSKI	DATE 10/26/65
DECIMALS .X ± .05 .XX ± .01 .XXX ± .005			CHECKED JL	DATE 4/6/66
FRACTIONS ± 1/64 ANGLES ± 0° 30'			ELECT. DES. JL	DATE 4/6/66
TOLERANCES			MECH. DES. JL	DATE 4/6/66
THE CONTENTS OF THIS DRAWING ARE THE EXCLUSIVE PROPERTY OF THE TECHNICAL MATERIEL CORP. ITS UNAUTHORIZED USE OR REPRODUCTION IN WHOLE OR IN PART IS STRICTLY FORBIDDEN.			FINAL APPROVAL JL	DATE 4/1/66
			MS4772 Ø	
			SHEET	REV. LTR.

NOTES

1 RTPH-1  
QTY./UNIT MODEL USED ON ASS'Y. NO.  
SCALE 1/1 CODE