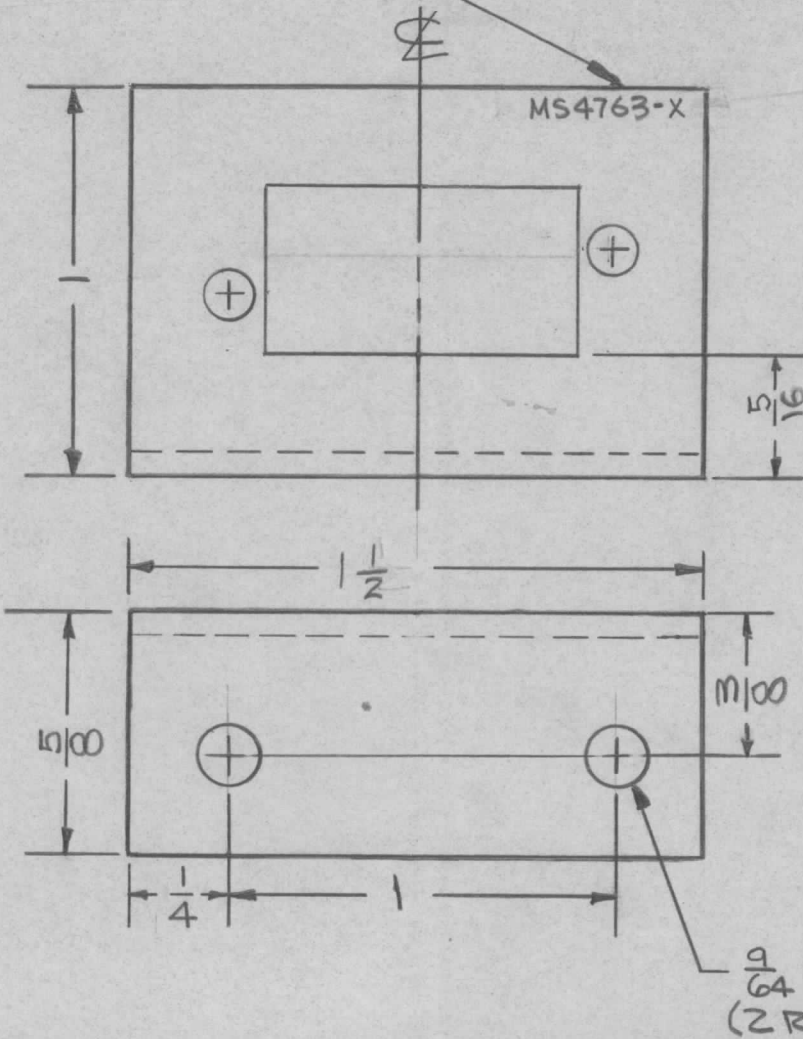


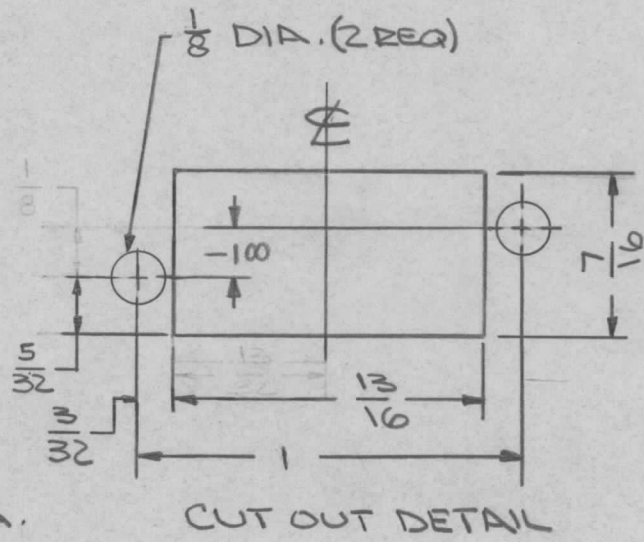
METAL STAMP, TMC PART NO. 1/8 HIGH GOTHIC.
W/LATEST REV. LETTER.

REQ. PER UNIT	USED ON		MS4763	Ø
	MODEL	ASS'Y. NO.		
	LPCD-1		9-17-65	



UNLESS OTHERWISE SPECIFIED:

1. USE MATERIAL THICKNESS FOR MAXIMUM RADIUS ON ALL BENDS
2. ALL ANGULAR BENDS 90 DEGREES
3. REMOVE ALL BURRS AND SHARP EDGES
4. MOUNT INSERTS AFTER FINISHING



				REQ. ITEM	PART NO.	EATON	DESCRIPTION	SYMBOL	
				.002		THE TECHNICAL MATERIEL CORP.			
				STOCK SIZE		MAMARONECK, NEW YORK			
				ALUMINUM		BRACKET, RELAY MTG.			
				MATERIAL		MTG.			
Ø	ORIGINAL RELEASE FOR PRODUCTION	9/21/65	Ø	211					
SYM	DESCRIPTION	DATE	CH. NO.	DRAFTS	CHECKER	ENG. APP.			
UNLESS OTHERWISE SPECIFIED DIMENSIONS ARE IN INCHES AND INCLUDE CHEMICALLY APPLIED OR PLATED FINISHES				SCALE		2:1			
				5052-H32		E. ANZA			
				TYPE & TEMPER		HEAT TREAT. SPEC.		DRAWN	
				IRIDITE S404				W. JORDAN	
				FINISH & SPEC. NO.		ELEC. DES. APP.		MECH. DES. APP.	
DECIMALS .X ± .05 .XX ± .01 .XXX ± .005				FRACTIONS ± 1/64 ANGLES ± 0° 30'				TOLERANCES	
						9/21/65		MS4763 Ø	