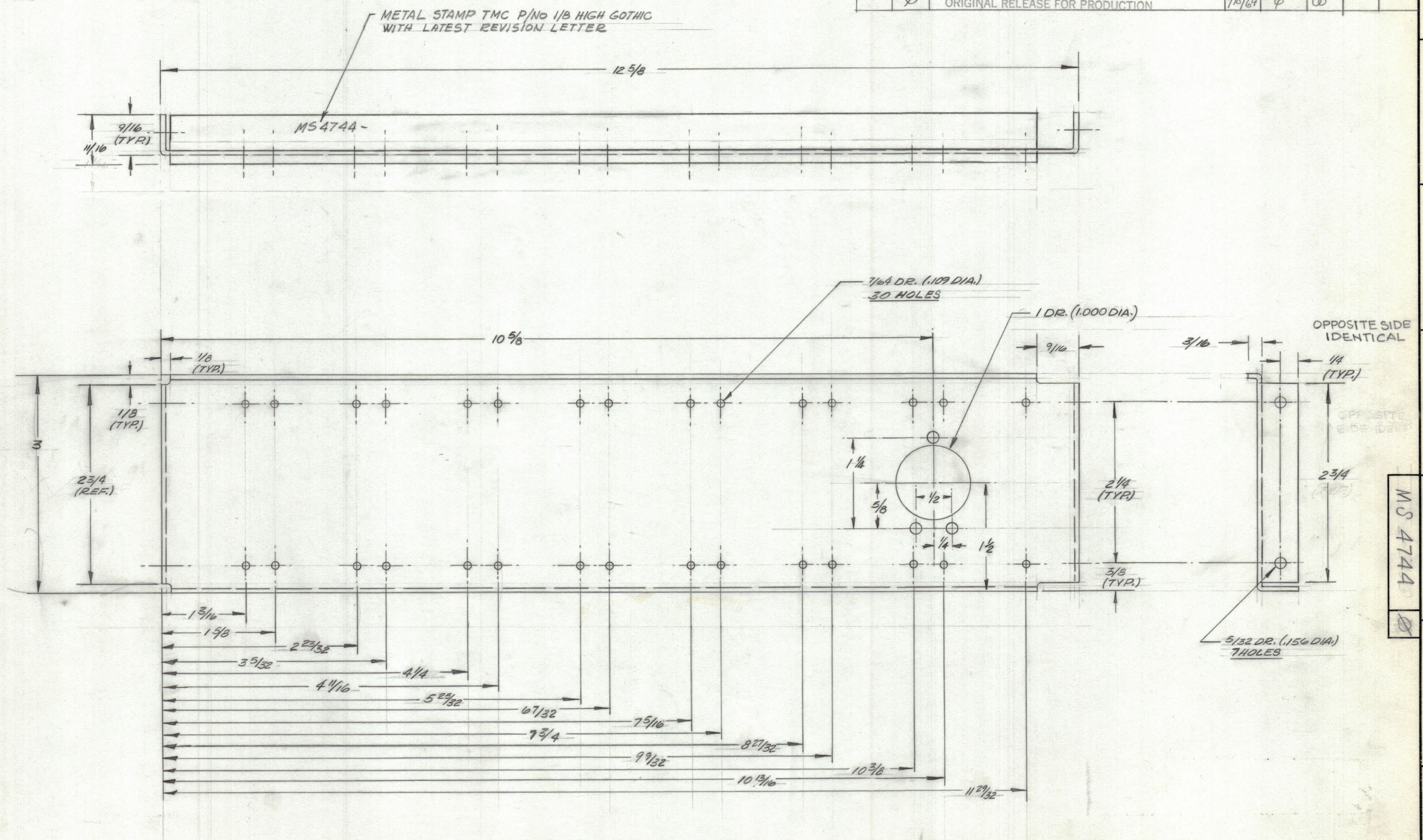


REVISIONS							
ZONE	SYM	DESCRIPTION	DATE	E.M.N. NO.	DRAFT	CHKD	APPD
	X1	ADD RELAY MOUNTING HOLES	10-13-64				
	X2	CHANGED TOP FLANGE				ADJ	RTM
	X3	CORRECTED DRAWINGS	10/21/64			E.W.J	
	X4	MATERIAL WAS .062 5005-H32 ALUM. METAL STAMP, FINISH NOTE Y NOTES ADDED	9/3/65	X4		C.O.L	
	Ø	ORIGINAL RELEASE FOR PRODUCTION	7/10/69	Ø		Ø	



UNLESS OTHERWISE SPECIFIED:

1. USE MATERIAL THICKNESS FOR MAXIMUM RADIUS ON ALL BENDS
2. ALL ANGULAR BENDS 90 DEGREES
3. REMOVE ALL BURRS AND SHARP EDGES

NOTES

ONE	ØDN-1	
QTY./UNIT	MODEL USED ON	ASSY. NO.
SCALE	CODE	
FULL	A	

THE CONTENTS OF THIS DRAWING ARE THE EXCLUSIVE PROPERTY OF THE TECHNICAL MATERIEL CORP. ITS UNAUTHORIZED USE OR REPRODUCTION IN WHOLE OR IN PART IS STRICTLY FORBIDDEN.

REF: LD2000

REQ'D.	ITEM	PART NUMBER	DESCRIPTION	SYMBOL
LIST OF MATERIAL 5015-7 C				
MATERIAL		THE TECHNICAL MATERIEL CORP.		
.062 THK. ALUMINUM 5052-H32		MAMARONECK, NEW YORK		
FINISH		TITLE		
SADA YEL. IRIDITE		REAR SUPPORT - REAR		
DRAWN		DATE	FINAL APPROVAL	
B.J. JENSEN		10/21/64	Ø	
CHECKED		DATE	DATE	
Ø		10/21/64	MS 4744	
ELECT. DES.		DATE	REV. LTR.	
Ø		10/30/64	Ø	