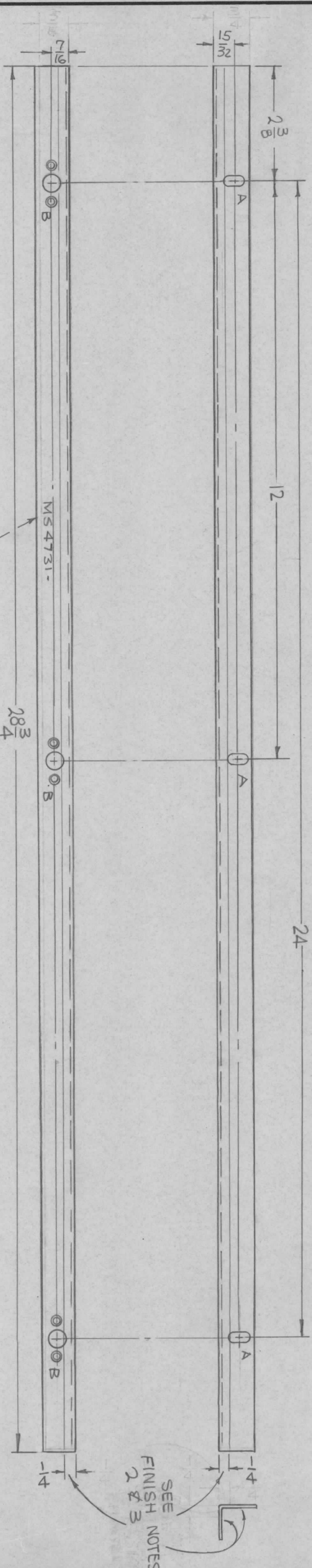
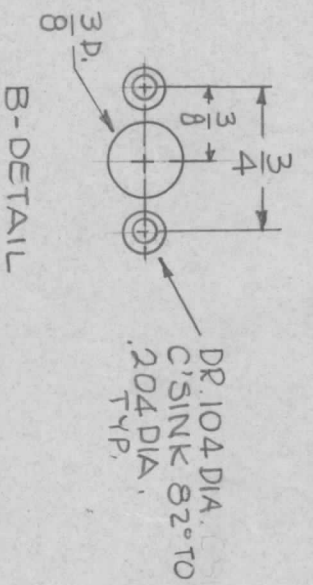


HOLE	DESCRIPTION	REQ.
A	3/8 X 3/16 SLOTS	3
B	SEE DETAIL	3



SYMBOL		DESCRIPTION		DATE	E.M.N. NO.	DRAFT	CHKD	APPD
X1	Ø	7/16 WAS 3/8, 3/4 WAS 5/8 (LOWER VIEW)	ORIGINAL RELEASE FOR PRODUCTION	11-11-65	X1	MB	QTS	ave
				3366		Jc	QTS	ave

UNLESS OTHERWISE SPECIFIED:

1. USE MATERIAL THICKNESS FOR MAXIMUM RADIUS ON ALL BENDS
2. ALL ANGULAR BENDS 90 DEGREES
3. REMOVE ALL BURRS AND SHARP EDGES

- FINISH NOTES:
1. S404 - IRIDITE 14-2 AL-COAT. — ALL SURFACES
  2. S114 - ZINC CHROMATE PRIMER — AREAS SHOWN
  3. S115 - SMOOTH GRAY ENAMEL — AREAS SHOWN

MARK TMC PART NO. 1/8 HIGH GOTHIC W/LATEST REV. LETTER.

NOTES

QTY./UNIT	1	TST-10K	MODEL USED ON	ASSY. NO.
SCALE	1/2"=1"	A		

REQ'D.	ITEM	PART NUMBER	DESCRIPTION	SYMBOL
	F. BUDETTI		THE TECHNICAL MATERIEL CORP. MAMARONECK, NEW YORK	
	MATERIAL	1/8 X 3/4 X 3/4 ALUMINUM		
	FINISH	SEE NOTE		

DRAWN		DATE	FINAL APPROVAL	DATE
MB		8-27-65	MB	3/2/66
CHECKED		DATE		
QTS		3-2-66		
ELECT. DES.		DATE		
MB		3/2/66		
MECH. DES.		DATE		
MB		3/2/66		