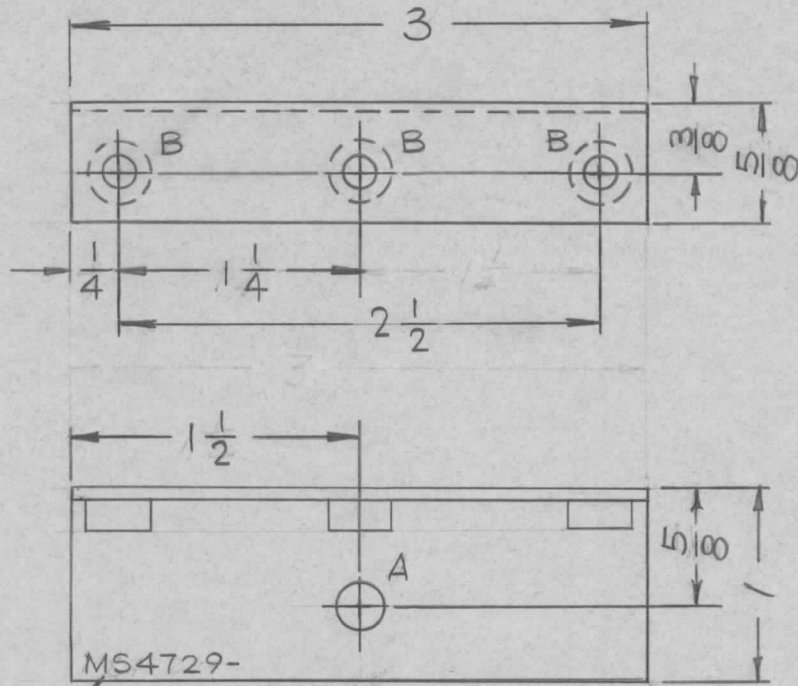


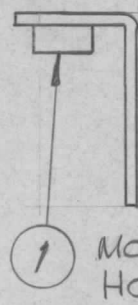
HOLE	DESCRIPTION	REQ.
A	15/64 DIA.	1
B	.161-.164 DIA.	3

REQ. PER UNIT	USED ON		
	MODEL	ASS'Y. NO.	DATE
1	RARB-1	A5129	9 AUG 65
1	RASB-1	A5129	

MS4729  $\emptyset$



UNLESS OTHERWISE SPECIFIED:  
 1. USE MATERIAL THICKNESS FOR MAXIMUM RADIUS ON ALL BENDS  
 2. ALL ANGULAR BENDS 90 DEGREES  
 3. REMOVE ALL BURRS AND SHARP EDGES  
 4. MOUNT INSERTS AFTER FINISHING



1 MOUNT IN ALL "B" HOLES AS SHOWN

METAL STAMP TMC PART NO. 1/8 HIGH GOTHIC. W/LATEST REV. LETTER

SYMBOL	DESCRIPTION	DATE	CH. NO.	DRAFTS	CHECKER	ENG. APP.	REQ.	ITEM	PART NO.	DESCRIPTION	REF.	SYMBOL
$\emptyset$	ORIGINAL RELEASE	10/26/65					3	1	NT129-440-4	NUT, PLAIN, SPLINE	SK10053	B
									.081 THK	THE TECHNICAL MATERIEL CORP.		
									STOCK SIZE	MAMARONECK.		
									ALUMINUM	NEW YORK		
									MATERIAL	BRACKET, DIODE MTG.		
									5052-H32			
									TYPE & TEMPER			
									HEAT TREAT. SPEC.			
									5404 YEL. IRIDIOTE			
									FINISH & SPEC. NO.			
										ELEC. DES. APP.		
										MECH. DES. APP.		
												MS4729 $\emptyset$